

# FROM THE FOUNDER OF THE #VIKISEWS BRAND

---

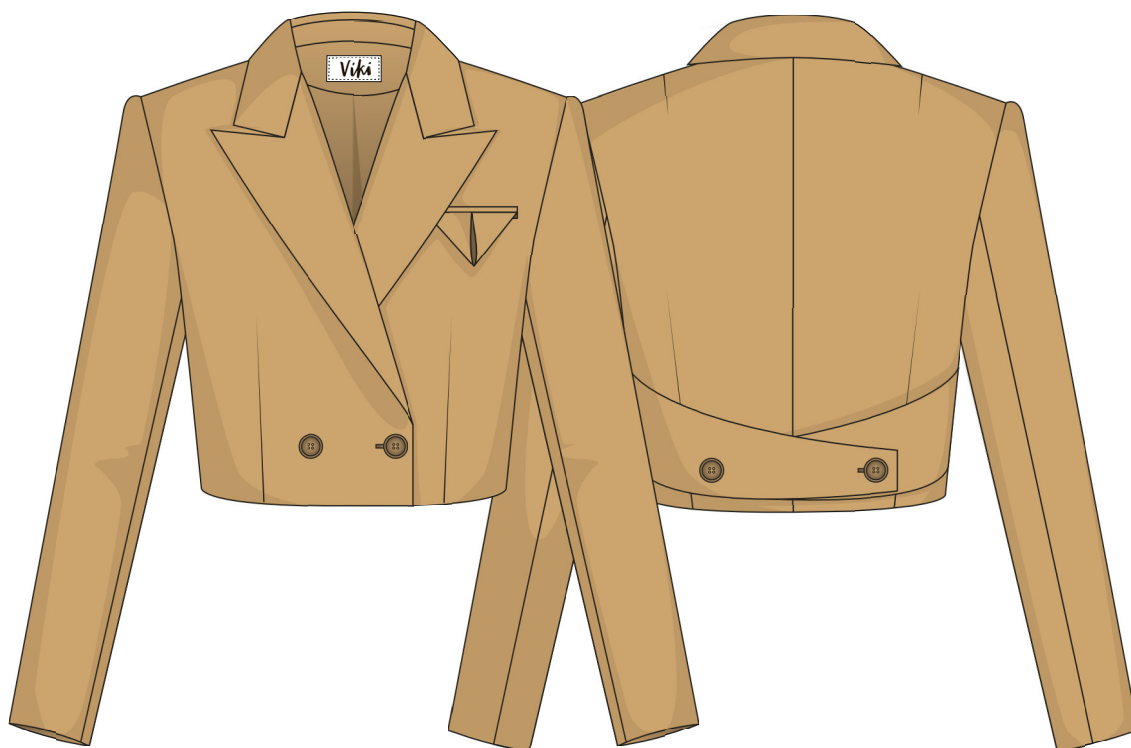


Back in 2016, when I was working on my first set of sewing instructions, I was trying to write them in such a way that even a complete beginner could easily understand and use them to create their very first garment. These instructions laid the foundation for the Vikisews brand, its vision and its mission. I wanted to create modern patterns with the most detailed and clear instructions.

Now, with each new collection we are constantly improving our instructions, amending them and adding more relevant details. By the time the final product reaches you, our drafters, correctors, and editors would have spent weeks perfecting every word and every photograph. If you compile a few of our instructions together, you will get a sewing manual that will assist you in sewing all kinds of garments at any difficulty level.

And I would be very happy if these instructions helped you to turn your hobby into a lifelong passion... Enjoy the process! Create your ultimate dream wardrobe! Wear your garments proudly for years to come!

If you have any questions, please contact us at [info@vikisews.com](mailto:info@vikisews.com) - we are always there to help.



## NANCY PATTERN DESCRIPTION

---

Nancy is a cropped semi-fitted double-breasted blazer with a straight silhouette. The fit is created with the help of bust and waist darts on the front bodice. The back bodice has waist and shoulder darts, and a center back seam. Nancy has a classic blazer-style collar with a stand, the edges of the collar are rectangular, and the lapels have pointed edges. There is a non-functional breast welt pocket on the left side of the front bodice featuring a decorative flap with a folded pocket square look. The back has two decorative tabs of a trapezoid shape. These tabs are inserted into the side seams and fasten with buttons and buttonholes (they can be used to add a more fitted look to the silhouette). Nancy features long two-piece set-in sleeves, and fastens with buttons. The blazer is fully lined and is 3–4 cm (1 1/8"–1 5/8") below the waistline in length.



## IMPORTANT!

---

The contents of this pattern are copyright protected and belong exclusively to VikiSews. You may use VikiSews patterns for personal use. It is prohibited to share VikiSews patterns and instructions with third parties, as well as to publish patterns and instructions online for public access. According to part 1 of clause 1252 and clause 1301 of the Civil Code of the Russian Federation, failure to comply with the mentioned rules constitutes a breach of the legislation in force in the field of copyright and entails liability of the violator. Illegal use or distribution will be prosecuted in accordance with legislation.

You may use VikiSews patterns for commercial use, to sew custom-made garments and/or create fashion collections, on the condition that the patterns are solely used in a manufacturing setting and are not further shared with individuals.

# TOTAL EASE ALLOWANCE

	Bust ease	Waistline ease	Upper arm ease
cm	12.9–13.4	21.9	8.5
inches	5 1/8"–5 1/4"	8 5/8"	3 3/8"

# GARMENT LENGTH, SLEEVE LENGTH

Height, cm	Garment length at center back, cm	Sleeve length, cm
1 (154–160)	40.2–43	57.8–59.6
2 (162–168)	41.2–44	59.8–61.6
3 (170–176)	42.2–45	61.8–63.6
4 (178–184)	43.3–46	63.8–65.6
Height, ft	Garment length at center back, in	Sleeve length, in
1 (5'1"–5'3")	15 7/8–16 7/8	22 3/4–23 1/2
2 (5'4"–5'6")	16 1/4–17 3/8	23 1/2–24 1/4
3 (5'7"–5'9")	16 5/8–17 3/4	24 3/8–25
4 (5'10"–6'1")	17–18 1/8	25 1/8–25 7/8

# SUGGESTED FABRIC

To sew this blazer, choose suiting fabrics with the following properties:

- medium weight, easily pressed and shaped with steam, breathable, soft, non-stretch or with little stretch, opaque
- the fabric content can include natural fibers (wool, silk, cotton, linen), artificial fibers (viscose), blends (wool + silk, wool + polyester, cotton + viscose, etc.), and synthetic fibers (polyester, polyester + elastane)
- the following fabrics are recommended: wool suiting, viscose suiting, linen suiting, gabardine, denim, corduroy

**Attention!** We do not recommend very stretchy knit materials (jersey fabric) and lightweight sheer fabrics (chiffon, organza, stretch lace).

For the lining, artificial fibers (viscose), blends (viscose + elastane, viscose + polyester), or synthetic fibers (polyester, polyester + elastane) are recommended.

The blazer in the photo is made of suiting fabric. This fabric is medium-weight, presses well, soft, with little stretch. The fiber content is a blend of 63% polyester, 34% viscose and 3% spandex. The lining is a blend of viscose and polyester.

The garment in the photo is made in rib knit. This fabric is medium-weight, soft, and very stretchy. The fabric content is a blend of cotton (98%) and spandex (2%).

**IMPORTANT!** When purchasing fabric, please account for shrinkage and buy 5% more than required.

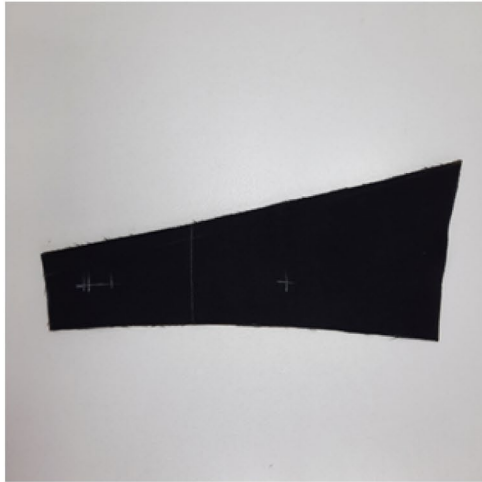
3. Lightweight fusible woven interfacing, 140 cm wide, in metres:

Height, cm	Size									
	34	36	38	40	42	44	46	48	50	52
1 (154–160)	1	1.05	1.05	1.1	1.1	1.1	1.2	1.2	1.2	1.2
2 (162–168)	1.05	1.05	1.05	1.1	1.1	1.1	1.2	1.2	1.2	1.2
3 (170–176)	1.05	1.1	1.1	1.1	1.15	1.15	1.2	1.2	1.2	1.2
4 (178–184)	1.1	1.1	1.1	1.1	1.15	1.15	1.25	1.25	1.25	1.25

Lightweight fusible woven interfacing, 55" wide, in yards:

Height, ft	Size									
	34	36	38	40	42	44	46	48	50	52
1 (5'1"–5'3")	1 1/8	1 1/8	1 1/8	1 1/4	1 1/4	1 1/4	1 1/4	1 1/4	1 1/4	1 1/4
2 (5'4"–5'6")	1 1/8	1 1/8	1 1/8	1 1/4	1 1/4	1 1/4	1 1/4	1 1/4	1 1/4	1 1/4
3 (5'7"–5'9")	1 1/8	1 1/4	1 1/4	1 1/4	1 1/4	1 1/4	1 1/4	1 1/4	1 1/4	1 1/4
4 (5'10"–6'1")	1 1/4	1 1/4	1 1/4	1 1/4	1 1/4	1 1/4	1 3/8	1 3/8	1 3/8	1 3/8

4. Fusible stay tape — 4m (4 3/8 yards)
5. One hidden backing button, 2 cm (3/4") in diameter
6. Four buttons, 2.2 cm (7/8") in diameter
7. One pair of shoulder pads
8. One pair of sleeve head wadding pieces
9. One or two spools of matching thread



Before applying interfacing to the main fabric, we recommend testing interfacing and/or straight-grain fusible tape on a leftover piece of fabric. Also, make sure to check the settings on your iron: the temperature, the steam (if the main fabric can be interfaced using the steam setting), and the time needed for the interfacing to adhere to the main fabric.

**Fully interface the following pieces:**

- front – 2 pieces
- back – 2 pieces
- front facing – 2 pieces
- upper collar – 1 piece on fold
- undercollar – 2 pieces
- collar stand – 2 pieces on fold
- top welt – 1 piece
- bottom welt – 1 piece
- decorative back detail – 2 pieces

Also interface the breast pocket placement area on the left front bodice piece. The interfacing grainline should go along the pocket opening.

**Using straight-grain fusible stay tape, also interface the following pieces:**

- front edge and lapel edge
- lapel roll line
- front bodice shoulder seam
- front and back neckline

The fusible tape should be placed 8 mm (just under 3/8") from the edge. The length of the fusible tape equals the length of the area to be interfaced (measure the pattern piece).



**Using bias-cut fusible stay tape, also interface the armhole edges on the front and back bodice pieces.**

To interface, put the gluey side of the interfacing on top of the wrong side of the fabric piece (or a section thereof) and press with the iron. Do not iron the piece, but instead press it section by section, holding it down with the iron for a few seconds until that section is adhered and then pressing down the next section. You may use a cotton pressing cloth to protect your iron sole.