

FROM THE FOUNDER OF THE #VIKISEWS BRAND



Back in 2016, when I was working on my first set of sewing instructions, I was trying to write them in such a way that even a complete beginner could easily understand and use them to create their very first garment. These instructions laid the foundation for the Vikisews brand, its vision and its mission. I wanted to create modern patterns with the most detailed and clear instructions.

Now, with each new collection we are constantly improving our instructions, amending them and adding more relevant details. By the time the final product reaches you, our drafters, correctors, and editors would have spent weeks perfecting every word and every photograph. If you compile a few of our instructions together, you will get a sewing manual that will assist you in sewing all kinds of garments at any difficulty level.

And I would be very happy if these instructions helped you to turn your hobby into a lifelong passion... Enjoy the process! Create your ultimate dream wardrobe! Wear your garments proudly for years to come!

If you have any questions, please contact us at info@vikisews.com - we are always there to help.



OONA PATTERN DESCRIPTION

Oona is a semi-fitted A-line dress. The front bodice is only partially attached to the skirt, creating cutout sides, with the skirt sitting above the natural waistline. The dress has a wide, deep V-neckline that features gathers and elastic threaded through channels. The back bodice is cropped and the lower edge of the front and back bodice has elasticated channels. The back skirt is not attached to the back bodice and has a gently curved waistline. The upper edge of the front and back skirt has ties attached to an elastic threaded through channels. The voluminous raglan sleeves have an elasticated hem. Oona is above ankle length.



IMPORTANT!

The contents of this pattern are copyright protected and belong exclusively to VikiSews. You may use VikiSews patterns for personal use. It is prohibited to share VikiSews patterns and instructions with third parties, as well as to publish patterns and instructions online for public access. According to part 1 of clause 1252 and clause 1301 of the Civil Code of the Russian Federation, failure to comply with the mentioned rules constitutes a breach of the legislation in force in the field of copyright and entails liability of the violator. Illegal use or distribution will be prosecuted in accordance with legislation.

You may use VikiSews patterns for commercial use, to sew custom-made garments and/or create fashion collections, on the condition that the patterns are solely used in a manufacturing setting and are not further shared with individuals.

TOTAL EASE ALLOWANCE

Bust ease, cm	Waistline ease, cm	Hipline ease, cm	Upper arm ease, cm
53.7-58.6	47.3-50.3	38.5-38.6	32.4-33.7

GARMENT LENGTH, SLEEVE LENGTH

Height, cm	Back length from waist down, cm	Sleeve length including shoulder width, cm
1 (154-160)	81	23.8-24.2
2 (162-168)	84	25.1-25.5
3 (170-176)	87	26.3-26.8
4 (178-184)	90	27.6-28.1

SUGGESTED FABRIC

To sew this dress, choose shirting and dress-weight fabrics with the following properties:

- light to medium weight, structured, non-stretch
- the fabric content can include natural (silk, cotton, linen), artificial (viscose), blends (cotton + viscose, etc.), and synthetic fibers (polyester)
- the following fabrics are recommended: sateen, poplin, linen, eyelet, opaque cotton shirting, viscose

The dress on the photo is made in 100% eco-friendly cotton. This fabric is lightweight, soft, and non-stretch.

PATTERN PIECES LIST

1. From main fabric:

- front bodice – cut 2
- back bodice – cut 1 on fold
- front skirt – cut 1 on fold
- back skirt – cut 1 on fold
- sleeve – cut 2
- front tie – cut 2
- back channel – cut 1 on fold
- back skirt channel – cut 1 on fold
- front skirt channel – cut 2

***IMPORTANT!** Don't forget to transfer all pattern markings and notches onto the fabric.*

SEAM ALLOWANCES

All pattern pieces include seam allowances as follows:

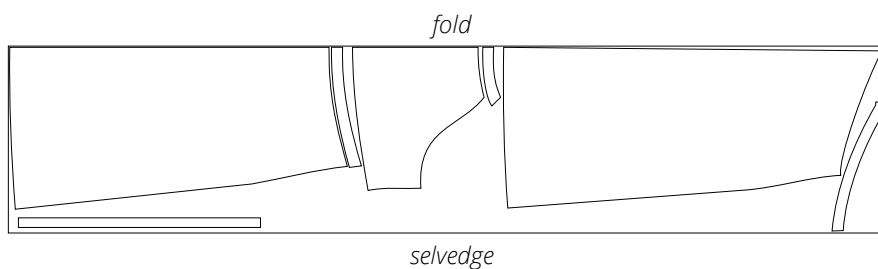
- garment hem allowance – 2cm
- all other seams – 1cm

Take this into account when laying out pattern pieces on the fabric.

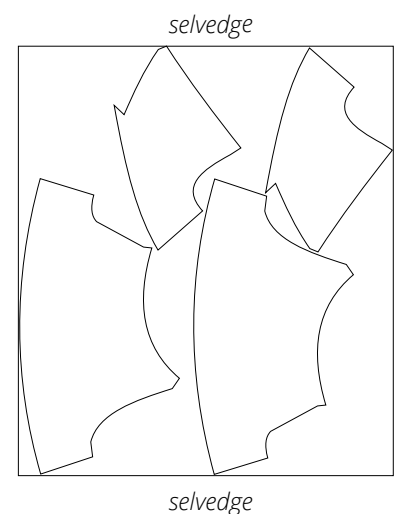
CUTTING LAYOUT

Main fabric, 110cm wide, for cutting-out in two parts, for sizes 34-36 in all heights, with a directional print

1st part: folded



2nd part: single layer



Important! Check if the chosen fabric is prone to be left with visible holes from the needle (such as leather, suede, raincoat fabric, silk, etc.). In such case, make sure to check the fit or detect any potential fit issues by sewing a TOILE first. Test fitting the garment from the main fabric is either not done at all, or has the purpose to solely adjust the length (of the skirt, of the sleeve, etc.).

If after basting, one piece ends up being bigger than the other one, do not rush to true them (making them identical by trimming the excess). Firstly, make sure all notches match. Secondly, lay your pieces on a flat surface and try once again to baste them. If you still end up with pieces not equal in size, for example, after one has been stretched out, or there was a mistake made while cutting out, the pieces should be trued after performing the test fit, while constructing the actual garment.

After assembling the garment, gently press it. Press the seams flat.

What should be considered when testing the fit?

Analyze the balance of the garment – side seams should be vertical.

Check the side projection (look from the side) of the front and the back of the garment. The front and the back should not sag or ride up.

Look at the side seams from the front, and then from the back. The side seams should not sag or ride up.

Check the length of the garment.

Pay attention if the garment has fit issues due to individual body features (for instance, in case of an asymmetrical figure – asymmetric shoulders, etc.).

Analyze the volume of the garment; it should be comfortable, non-restricting.

After the test fit, alter the pattern pieces, and if necessary, baste the garment again for a new test fit.



Place the back channel piece on the back bodice, right sides together. Align along the upper and side edges. Pin, baste, and machine in place. Backstitch in the beginning and end.