

1877



Use trims and appliqué for more unique looks.

Pieced A-Line Dress for 18" Dolls

Easy Variation

The classic A-line dress is perfect for dolls. You can make it cute or you can make it classy. This design is very easy to make and has lots of potential for creative flare.

If you like designing you can tape the front together to make one piece then make your own style of pieced front.

Side seams

[Blog Post](#) introduction to side seams on a lined bodice.

Full Size Patterns

Your pattern file contains full size vector drawn pattern pieces. These need to be printed out at 100%.

Extras

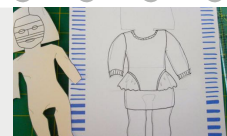
I have included a folder divider page for filing as well as an envelope to make up for keeping your pattern pieces safe. These also need to be printed at 100%.

Pictorial Tutorial

The instructions are made for printing.

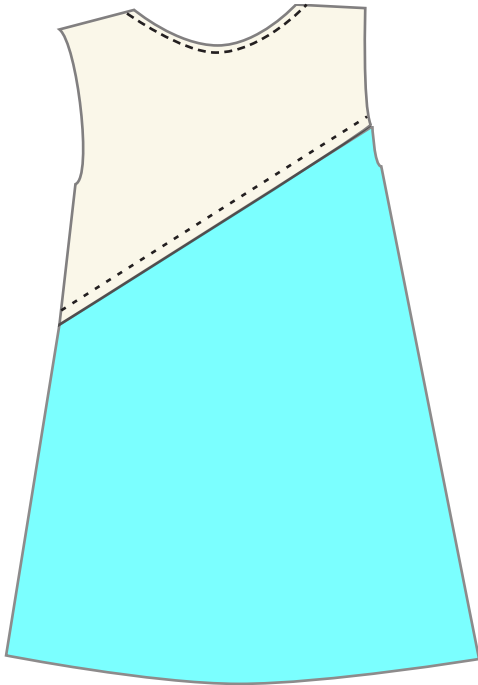
The instruction pages can be printed full size and folded in half to go in the envelope or you can print them as a half page booklet

Join my Doll Dressmaking Facebook group for ideas and tips.



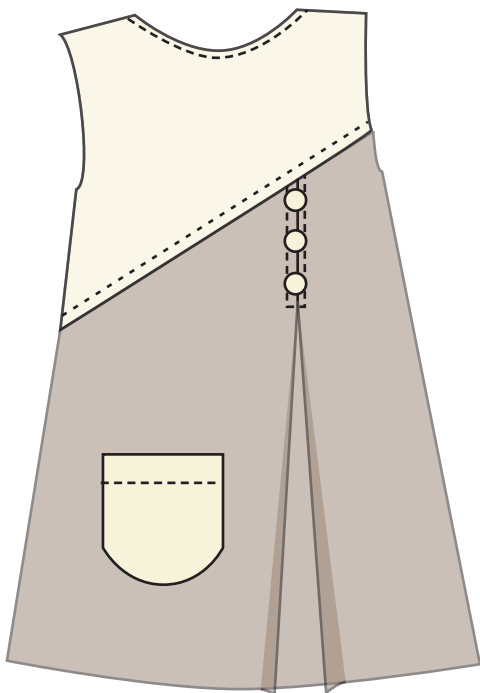
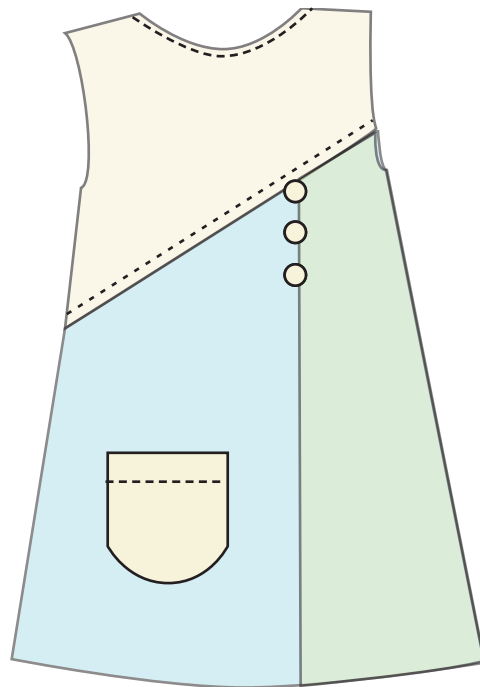
Pieced A-Line Dress

Snugfit range



View 1
2 piece front

View 2
3 piece front



View 3
Pleated front

1877 Pieced A-Line Dress - Page 1 of 8**Copyright**

© Valspierssews

This pattern is for personal use only.

The copy you purchase is copyrighted as my intellectual property and must not be shared online for free, printed for distribution in quantity for classes or groups or sold in any form.

You may create items for sale on a small scale.

When selling garments made from my patterns please include:

Created using a pattern by Valspierssews

If you just made a few changes please include:
Inspired by a pattern by Valspierssews

Printing at 100%

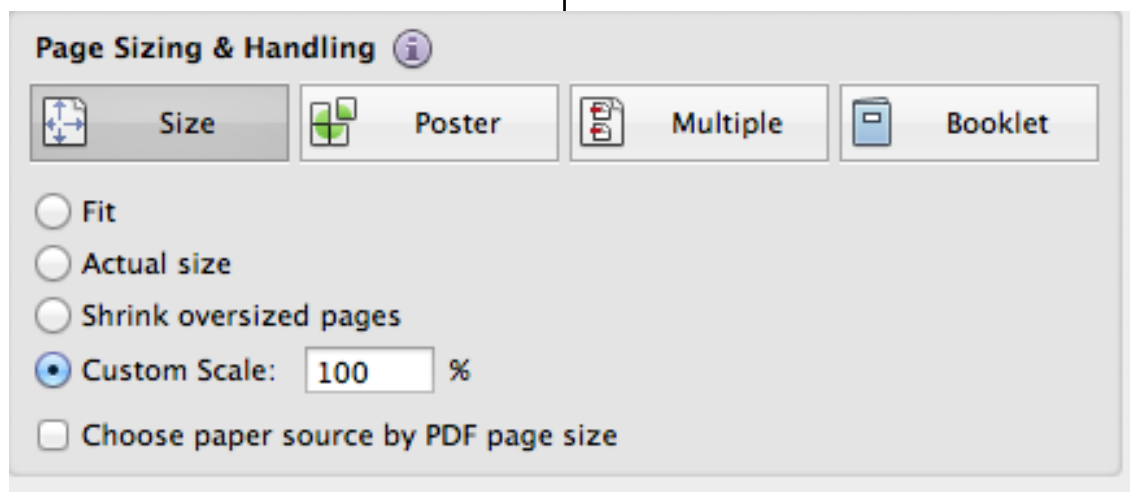
When I make my pattern pieces I try to arrange them so they will print on A4 or US Letter. Any problems just let me know.

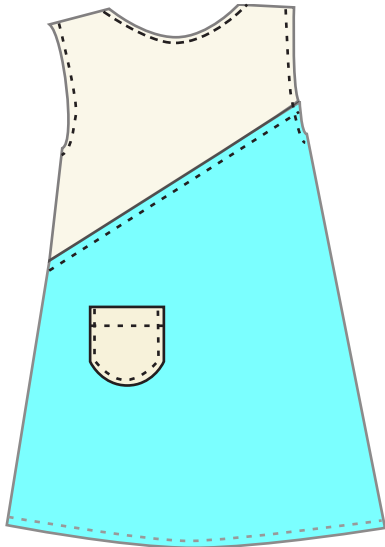
Whatever program you use to print you need to choose the 'Custom Scale' button and set to 100%. This makes the test square exactly 1".

If it is only 7/8" then your program has used a default scale of 96%.

The easiest program to use is Adobe Reader.

You can also use the booklet button to print the instructions as an A5 booklet.



1877 Pieced A-Line Dress - Page 2 of 8**View 1: 2 piece A-line Dress with or without a patch pocket****1. Requirements**

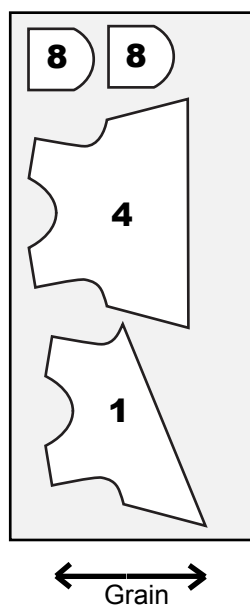
Contrast 1: 18cm (7") of light weight dress fabric
90cm (36") wide

4 small pieces of hook and loop velcro

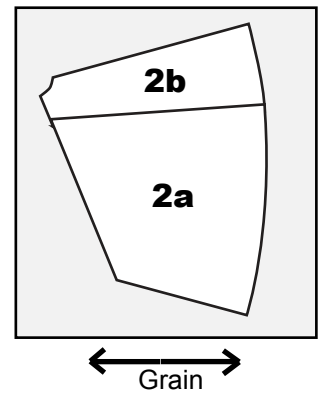
Contrast 2: 30cm (12") of light weight dress fabric
90cm (36") wide

Single layer of contrast 1.
Piece no.1 has to be right side up on the right side of the fabric.

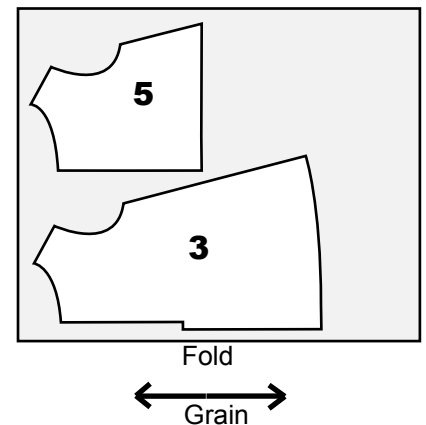
Contrast 1 can be a fat quarter



Single layer of contrast 2.
Piece no.2 has to be right side up on the right side of the fabric



Double layer of contrast 2



I couldn't quite fit contrast 2 on a fat quarter

2. Getting Started

All seam allowances are 6mm (1/4") unless otherwise stated.

a) Overlock the back edges of the dress below the indent.

