

3.

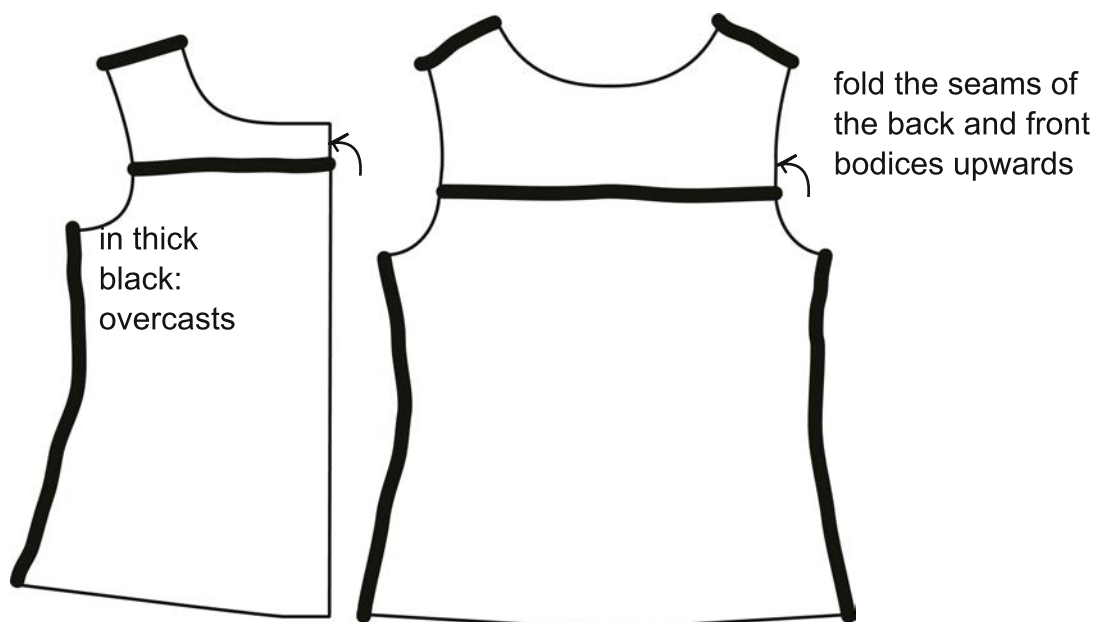
Overcast the assembly of the upper and lower back and front pieces.

Also surf:

- the sides of the back and front bodices
- back and front shoulders

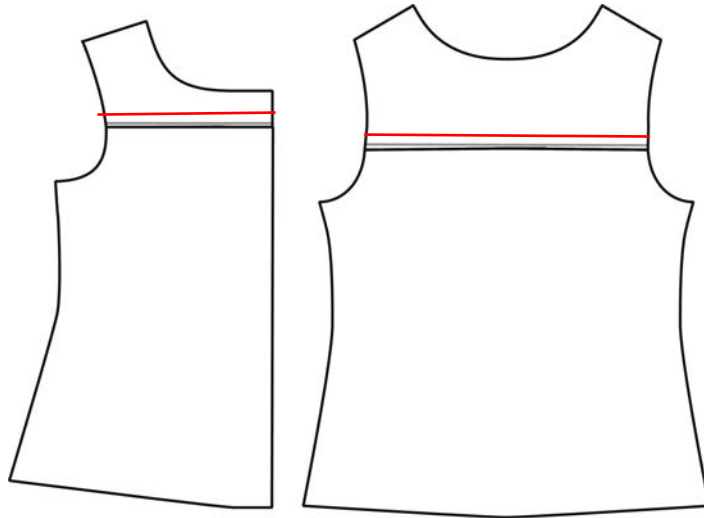
Iron the overcasts.

Iron the seams of the bodice upwards.



4.

Topstitch the seams of the back and front bodices 2 mm from the edge, putting the bodice right side up towards you. (in red on the drawings).



5.

Pin right sides together:

- the back sides with the front sides
- shoulders back with shoulders in front

Sew 1 cm from the edge then spread the seams with an iron.

6.

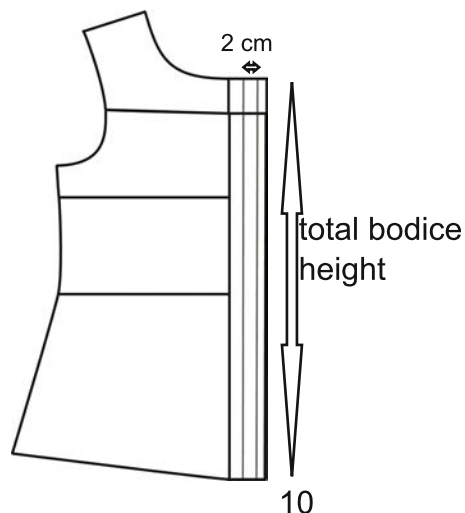
If you have chosen to sew a collar, interline a piece of collar: the one that will be underneath and that you will not see once the collar is in place.

Also interline the button tabs of the front bodices between the 2 dotted lines on the drawing.

On the pattern, it is the space between the two margin and fold lines of the front pieces of the bodice.

Simply cut 2 strips of interfacing 2cm wide and the full height of the bodice. (measure your work)

The interfacing is applied with the iron, glue side of the interfacing against the back of the fabric.



If you chose without a saddle bias collar, go to step 10.

If you chose no collar with facing, go to step 9B

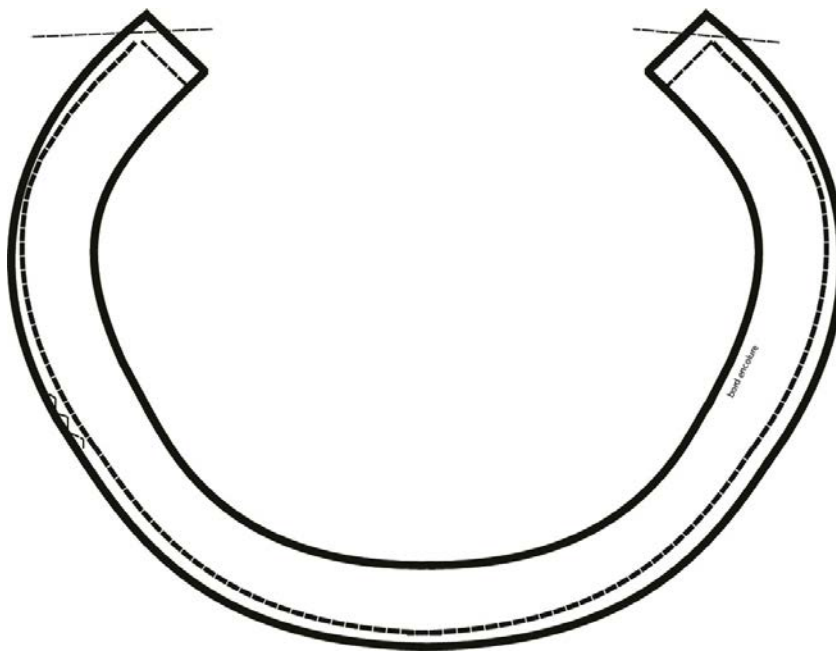
7.

Pin the collars right sides together, leaving the edges along the neckline open.

Stitch at 1 cm. (dotted line on drawing)

Notch the curves and angles and press aside the seams. (straight dotted lines at the corners and small teeth on the example drawing).

Turn the collar right side out and iron it.



8.

Pin the collar to the bodice neckline with the fabric side of the collar facing the right side of the bodice.

The ends of the neck must coincide with the neck mark.

Stitch 5mm from the edge. (small dotted lines on drawing)