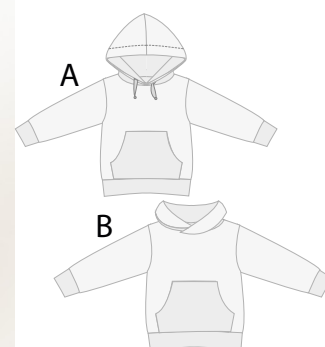


Fly ©



Hoodie „Fly“

Causal sweatshirt

The pattern contains 2 variants!

Variant A with lined hood and kangaroo pocket.

Variant B with shawl collar and kangaroo pocket.

Suitable for experienced seamstresses. With detailed photo instruction!

The seam allowances are included, as shown in pattern.

Recommended fabrics: sweat-shirting, soft french terry fabric. **Lining fabrics:** jersey

Lay out the pattern pieces on a double layer of fabric (right sides facing).

Fabric width 140 cm / 55¹/₈ in.

Size	Fabric length	Lining length A	Lining length B
12M / 18M	88 cm / 34 ⁴¹ / ₆₄ in	31 cm / 12 ¹³ / ₆₄ in	35 cm / 13 ²⁵ / ₃₂ in
2Y / 3Y	92 cm / 36 ⁷ / ₃₂ in	32 cm / 12 ¹⁹ / ₃₂ in	35 cm / 13 ²⁵ / ₃₂ in
4Y / 5Y	100 cm / 39 ³ / ₈ in	35 cm / 13 ²⁵ / ₃₂ in	36 cm / 14 ¹¹ / ₆₄ in
6Y / 7Y	105 cm / 41 ¹¹ / ₃₂ in	35 cm / 13 ²⁵ / ₃₂ in	36 cm / 14 ¹¹ / ₆₄ in
8Y / 9Y	110 cm / 43 ⁵ / ₁₆ in	35 cm / 13 ²⁵ / ₃₂ in	38 cm / 14 ⁶¹ / ₆₄ in
10 Y / 11Y	120 cm / 47 ¹ / ₄ in	37 cm / 14 ⁹ / ₁₆ in	40cm / 15 ³ / ₄ in

Knitted cuffs: fabric width 82 cm / 32⁹/₃₂ in, fabric 32 cm / 12¹⁹/₃₂ in.

Important for e-book:

“Page, Sizing and Handling” should be set to “Actual size”. No scaling is required to print.

Printing orientation should be set to “Portrait.”

Please check that the measure square on the print is 5 cm / 3¹⁵/₁₆ in



Please note:

The instructions are shown in two different sorts of fabrics.

Variant A and B

The first thing to do is sew the pocket on the front of the sweatshirt (this is totally optional by the way) To do this, pin the outer fabric and lining right sides together and sew all around. Leave the lower side open.



Cut back the seam allowances of the curves and corners of the bum pocket.



Turn the pocket over and iron it.



Mark the front part



Place the pocket on the markings and stitch tightly on the straight sides. Up-down and on both sides. Avoid the curves / pocket openings