

About the Yoalli Dress Sleeve Extension by Telabeja

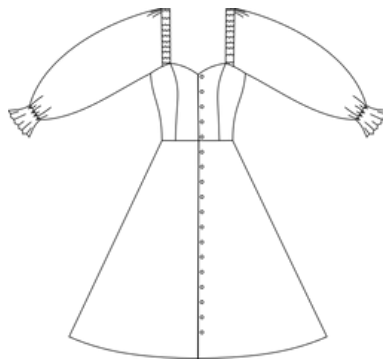
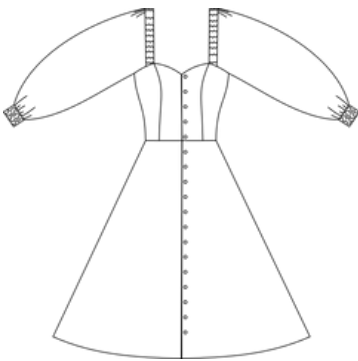
Version U
(sizes A-I)



Version V
(sizes A-I)



Version W
(sizes A-I)



The original dress comes in two different versions: with a zipper in the back (Y) or buttoned at the front (X). The sleeve extension comes with three different sleeve options: An elastic cuff (U), a shirred cuff (V) and a buttoned cuff (W).

This dress can be both elegant and casual, depending on the fabrics and print you choose.

Linen and cotton fabrics may be better suited for every day wear, whereas you could also choose to line a sheer fabric such as chiffon for the bodice and skirt and leave the sleeves see-through for a more glamorous look. Make sure to wash and dry your fabric before using it to reduce the risk of the fabric shrinking after sewing your garment. Besides, you should give it a good iron before you cut out the pattern pieces.

I would love to see your Yoalli dress versions on Instagram, feel free to tag me @telabeja and use the hashtag #yoalldresssleeveextension and #yoalldress or send it to me via e-mail to contact@telabeja.com.

Size Guide and Measurements

SIZE GUIDE

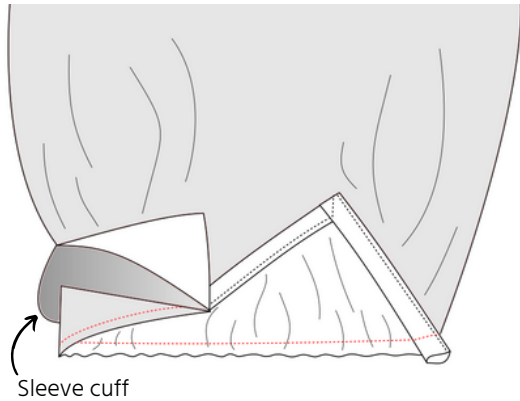
Measurements in centimetres	A	B	C	D	E	F	G	H	I
Bust	76 – 80	80 – 84	84 – 88	88 – 92	92 – 96	96 – 100	100 – 104	104 – 108	108 – 112
Waist	58 – 62	62 – 66	66 – 70	70 – 74	74 – 78	78 – 82	82 – 86	86 – 91	91 – 95
Measurements in inches	A	B	C	D	E	F	G	H	I
Bust	30 – 31.5	31.5 – 33	33 – 34.5	34.5 – 36	36 – 37.5	37.5 – 39.5	39.5 – 41	41 – 42.5	42 – 44
Waist	22.8 – 24.4	24.4 – 26	26 – 27.6	27.6 – 29.1	29.1 – 30.7	30.7 – 32.3	32.3 – 33.9	33.8 – 35.8	35.8 – 37.4

FINISHED GARMENT MEASUREMENTS

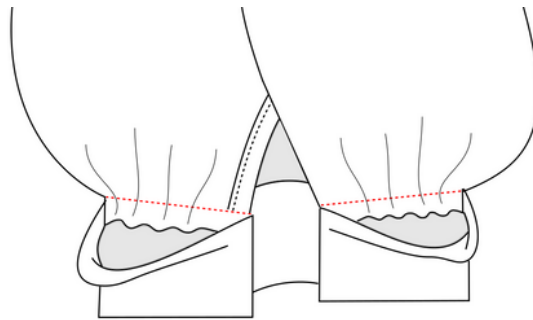
Measurements in centimetres	A	B	C	D	E	F	G	H	I
Upper Bust	76.8	80.4	84.2	88	91.6	95.4	99	102.8	106.5
Bust	80.7	84.7	88.7	92.7	96.7	100.7	104.7	108.7	112.7
Waist	62.38	66.46	70.55	74.64	78.74	82.82	86.92	91.02	95.12
Skirt length	48.5	50	51.5	53	54.5	56	57.5	59	60.5
Measurements in inches	A	B	C	D	E	F	G	H	I
Upper Bust	30.2	31.6	33.1	34.6	36.1	37.6	39	40.5	42
Bust	31.97	33.54	35.12	36.69	38.27	39.84	41.42	42.99	44.57
Waist	24.56	26.17	27.78	29.39	31	32.61	34.22	35.83	37.45
Skirt length	19	19.7	20.3	20.9	21.5	22	22.6	23.2	23.8

Sewing Instructions

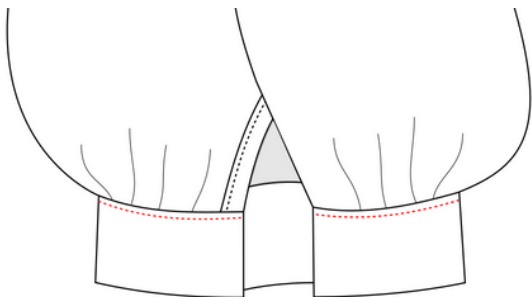
STEP 6: SEWING SLEEVE W



Step 6.7: Sew the cuff to sleeve by pulling the gathering threads to match the cuff width. Sew one right side of the cuff to the wrong side of the sleeve first.



Step 6.8: Fold over the SA of the other side of the cuff and topstitch the cuff to the sleeve hem, encasing the placket, too.



Step 6.9: Sew two buttonholes to the marked locations. Add buttons to the opposite sides.

