

Sewing instructions

- Step 1 - Printing the pattern

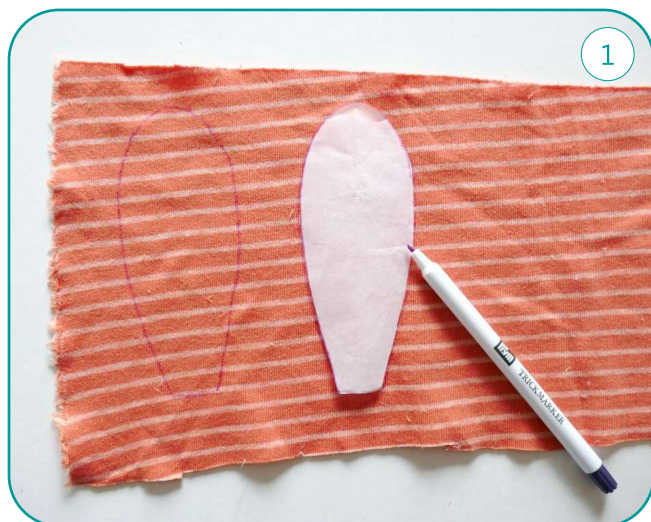
Print the pattern, unchecking all options such as "reduce to printer margins" or "fit to printer margins". It is recommended to choose the "auto-center pages in sheets" option. Check that the test square is 5 x 5 cm or 2" x 2".

Cut out the pieces of your paper pattern.

- Step 2 - Sewing the ears

With a self-erasing marker, trace the outline of the ear piece twice on the back of the contrasting fabric. (1)

Cut your pieces with a seam allowance of about 1 cm / 0.4" around the outline. Pin them on two pieces of ecru minkee, right sides together. (2)



Stitch over the tracings except at the base of the ear, then trim the seam allowances to 0.5 cm / 0.2". (3)

Turn the ears right side out using a turn-it-all tool or a knitting needle. (4)

