



## Shorts Río

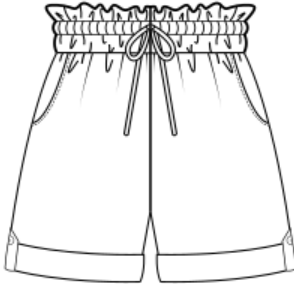


Level:



Confident beginner

The shorts are designed for a body height of 1.68 m. If you are significantly smaller or taller, you should adjust the pattern according to your wishes. Instructions for alterations can be found on page 8. The pattern offers you many design options. There are 3 different hem variations included:



Style 1: Turned up hem

The turned-up hem gives these shorts a casual look. Instead of sewing the hem, the hem is attached with iron-on hem tape, so no seam is visible from the outside. The side seams can be decorated with a strap, that is attached with a button.



Style 2: Lace hem

You like it playful? Then the lace hem is the right style for you! I recommend you choose a lace that is at least 4 cm wide. Also make sure that the color of the lace matches your fabric! If you use lace made from cotton, you should wash it before sewing, because it can shrink. I promise you that this version is an absolute eye-catcher!



Style 3: Folded hem

The variant with a folded hem is the simplest one. It is perfect for colorful fabrics with patterns. So that the design does not distract from the fabric. The folded hem is the easiest style, as it is simply fixed from the outside with a series of straight stitches.

## Dimensions finished garment

EU/US	32/1	34/2	36/4	38/6	40/8	42/10	44/12
Hip	98,7 cm	102,1 cm	105,4 cm	108,7 cm	112 cm	117,4 cm	122,8 cm
Thigh circumference	62,7 cm	64,7 cm	66,7 cm	68,7 cm	70,7 cm	74 cm	77,4 cm
Inside leg length	14,6 cm	14,6 cm	14,6 cm	14,6 cm	14,6 cm	14,6 cm	14,6 cm

# Materials



The shorts are designed for woven fabrics, which are inelastic fabrics. You should make sure to choose a thin fabric that can be easily gathered! You can use the following fabrics:

- ✓ Musselin
- ✓ Viscose, Viscose-Leinen
- ✓ Thin linen fabrics
- ✓ Cotton



You will also need the following:

- ✓ Elastic about 1.20 m long and 3 cm wide
- ✓ Stretch needle (for sewing the elastic)
- ✓ A small piece of interfacing to reinforce the buttonholes
- ✓ A cord about 1.20 m long and 0.5-1 cm thick (optional)
- ✓ 2 buttons, diameter max. 1,5 cm (only for style 1)
- ✓ Lace ribbon approx. 1.60 m (only for style 2)

Fabric requirement							
Shorts							
	32/1	34/2	36/4	38/6	40/8	42/10	44/12
Style 1	1,30 m	1,30 m	1,30 m	1,40 m	1,40 m	1,40 m	1,40 m
Style 2 & 3	1,10 m	1,10 cm	1,10 cm	1,30 cm	1,30 cm	1,30 cm	1,30 cm
<i>Consumption is based on a width of about 1.40 m. Plan on a few more centimeters for printed fabrics.</i>							

# Preparations

## Wash fabric:

Since natural fibers such as linen or viscose can shrink considerably, you must wash your fabric. Follow the manufacturer's instructions.

## A4 digital pattern print, glue and cut out:

Before printing the pattern, please set your printer settings to "actual size". Check that the test square on page 1 matches the measurements given. Now always cut the bottom and right edges of the A4 pages and glue them together with an overlap of 2 cm. For multi-size cuts, choose the size from the size chart according to your body measurements. Unless otherwise stated, tops, coats and dresses are always selected according to the bust measurement, trousers and skirts according to the hip measurement.

## A0 paper patterns

For A0 printouts, you should trace the pattern pieces in your size onto tracing paper.