







SEWING INSTRUCTIONS / INSTRUCCIONES DE COSTURA

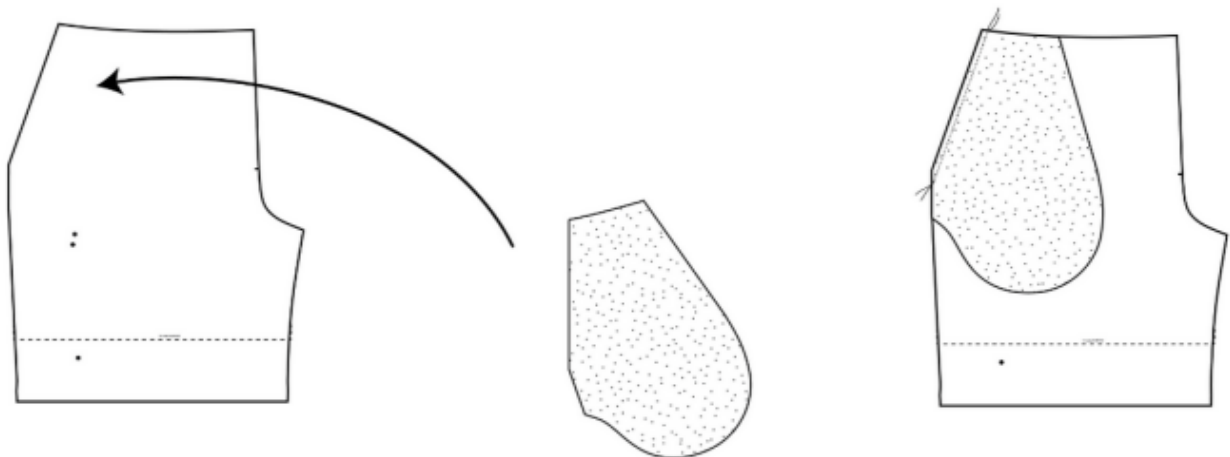
	Right side	Wrong side
Main fabric	 white	
Lining (Jersey)		
Interfacing		

Sewing Instructions Andrew Swimsuit / Instrucciones de Costura Traje de baño Andrew

ALL VIEWS / VIEW B IS SHOWN
TODAS LAS VISTAS / VISTA B ESTÁ MOSTRADA

STEP 1: Pin Bottom Pocket Bag (5) to Front (1), RIGHT SIDES together. Sew and Press.

Paso 1: Fija la Bolsa Inferior del Bolsillo (5) sobre el Frente (1) DERECHO con DERECHO. Cose y plancha.



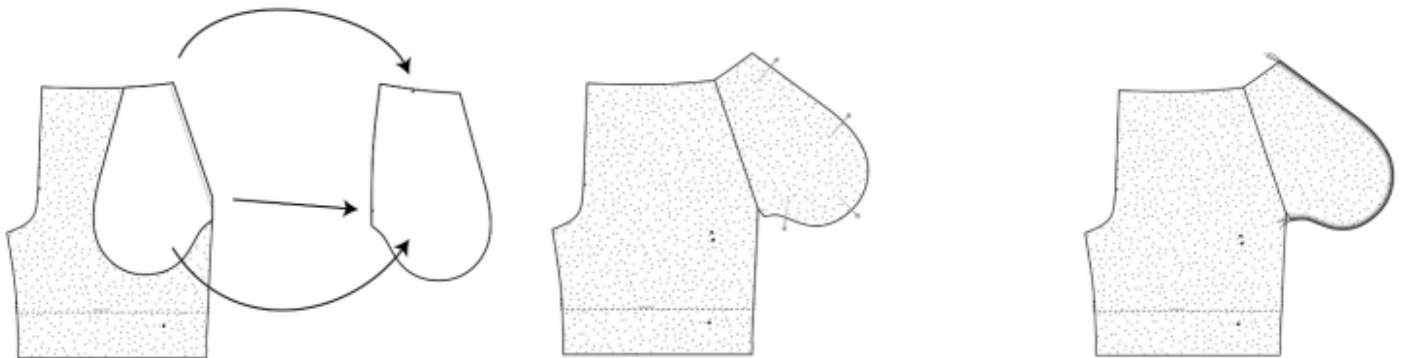
STEP 2: Understitch the inside of the pocket, pinning the seam allowance towards the pocket. Press.

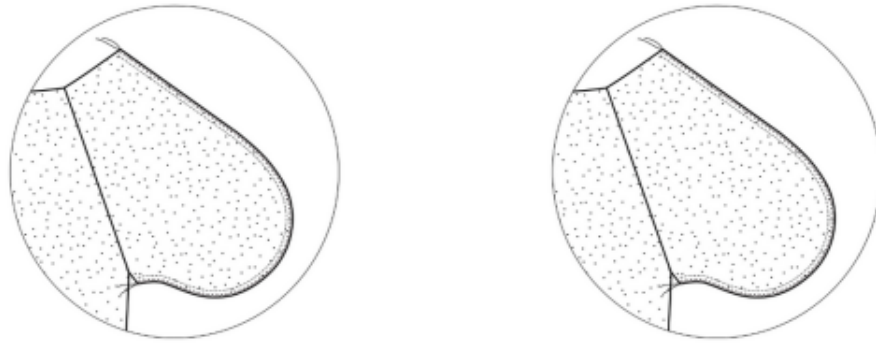
PASO 2: Cose un pespunte en el interior del bolsillo fijando el sobrante de costura hacia el mismo. Plancha.



STEP 3: Pin the Top Pocket Bag (4) to the Bottom Pocket Bag (5) RIGHT SIDES together, matching notches. Sew. Finish with an overlock or zig-zag stitch around the pocket.

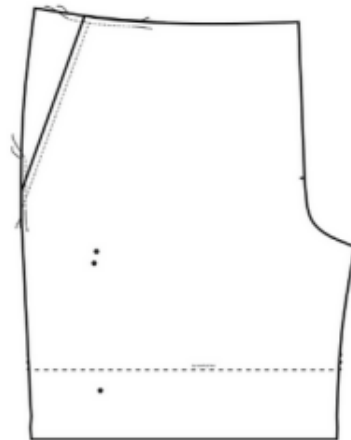
Paso 3: Fija la Bolsa Superior del Bolsillo (4) sobre la Bolsa Inferior del Bolsillo (5) DERECHO con DERECHO. Cose. Haz una terminación de zig-zag o remalladora alrededor del bolsillo.





STEP 4: Pin the pockets to the waist and side seams. Sew with a basting stitch on the top and sides.

PASO 4: Fija los bolsillos en la parte superior y los costados del pantalón. Cose con puntada de hilván.



STEP 5: Pin Front (1) to Back (2) RIGHT SIDES together. Sew. Finish with an overlock or zig-zag stitch.

PASO 5: Fija los Frentes (1) con las Espaldas (2) DERECHO con DERECHO en los costados. Cose. Haz una terminación de zig-zag o remalladora.