

LAZY DOG

PATTERN AND TUTORIAL
petraswonderland.com





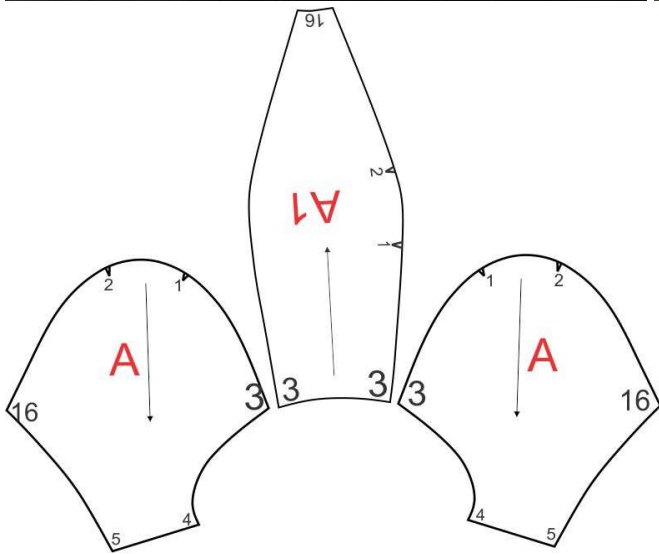
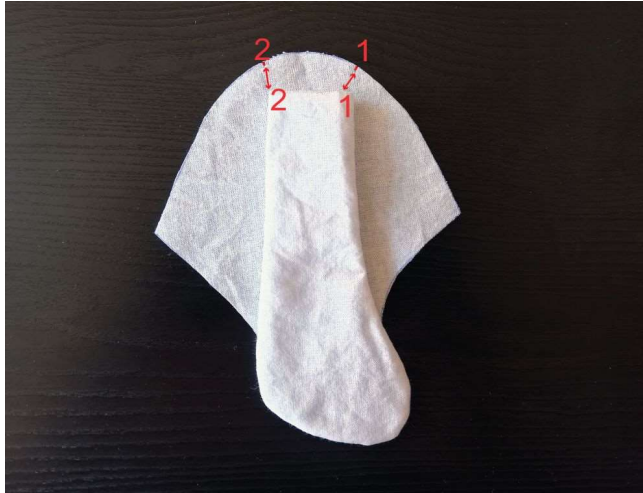
LAZY DOG

PATTERN & TUTORIAL

PETRASWONDERLAND.COM



- First, baste the ears (B) to the head sides (A) making sure that you match the notches of the pattern markings (number 1 align to 1, 2 to 2).
- The rounded part of the ears shall be pointing toward the front of the face. Seam allowance for basting is about 1/6" (0,4 cm).



- Next, position the Head Insert (A1) to the Head sides (A). Align the center of the Head Insert marked with number 3 with the Head sides also marked with number 3, right sides facing.

- Pin with needles (so the ears are sandwiched inside) and start sewing at point 3 all along to point 16.
- First, sew one side then repeat with the other side.



Items made using this pattern may be sold in your own shop. Please offer Petra's Wonderland design credit in a written description. Mass production, re-sale and distribution of pattern pieces and instructions is expressly prohibited.

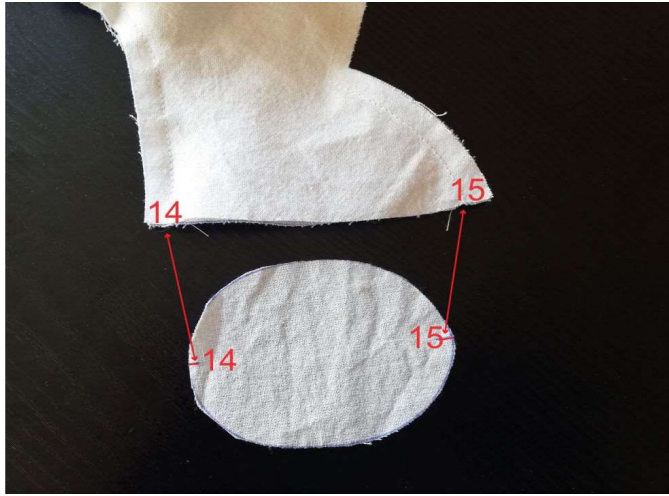


Thank you.
petraswonderland.com

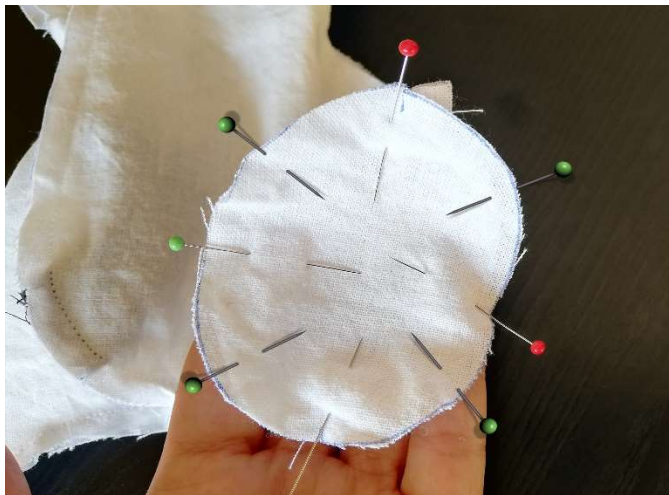




- ④ When you have sewn the Body pieces together, trim excess fabric around the seam.



- ⑤ Next, align the Foot Pad (D3) to the Leg opening.



- ⑥ Match up the dot marking with the seam (15 to 15 and 14 to 14) and pin with needles, then arrange the rest of the footpad with the leg opening and pin.



- ⑦ Start sewing from the point 14 and don't forget to start and end your seam with a backstitch. Sew with the footpad flat, facing down. Pull the pins out just before you are about to go over them.

- ⑧ When you have sewn the footpad and the leg together, trim excess fabric around the seam, for a better shaping later.

