

"Memory Bears are teddy bears made from clothing and belongings with sentimental value to you...Memory Bears are usually made in remembrance of a loved one or as a keepsake to pass from one generation to another. In making a memory bear, old clothes are transformed into a beautiful and comforting bear."

Rita Glosser

MEMORY BEAR BEN

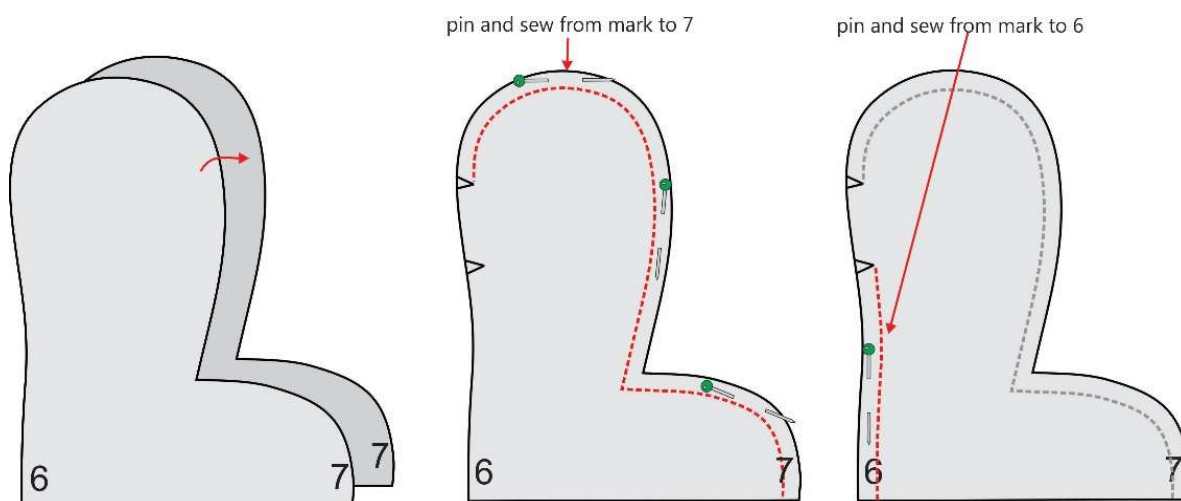
PATTERN AND TUTORIAL
petraswonderland.com

I ♥
**MEMORY
BEAR
BEN**

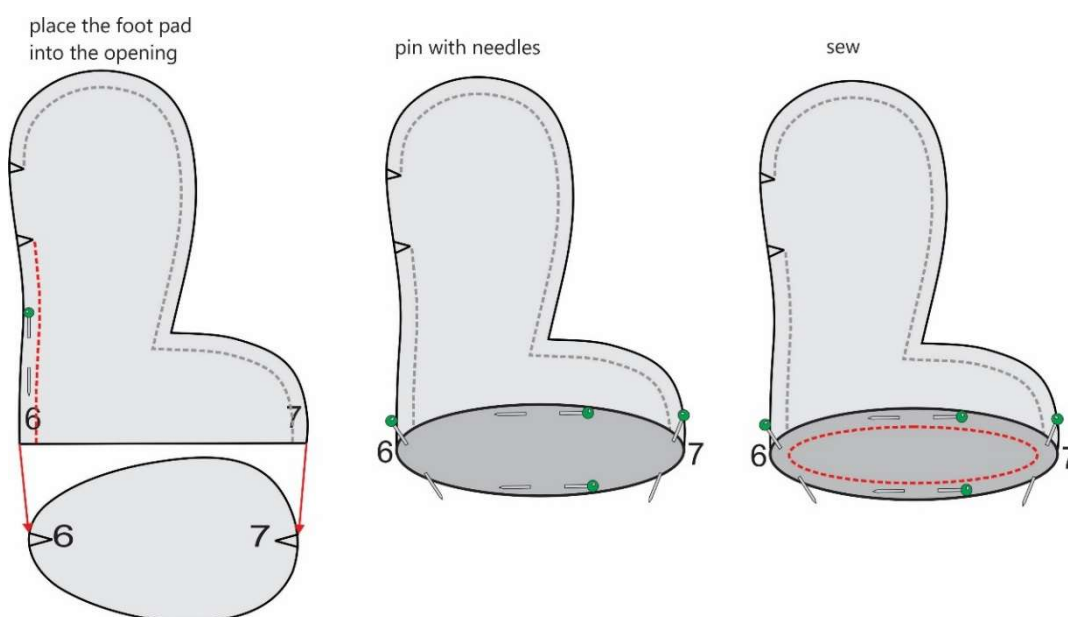


LEGS

- ♥ Align two Leg (D) parts right side facing.
- ♥ Pin and sew all along from notch to point 7.
- ♥ Do the same from notch to point 6, leaving the opening for turning and stuffing.
- ♥ Make a small snip at rounded parts for better shaping.



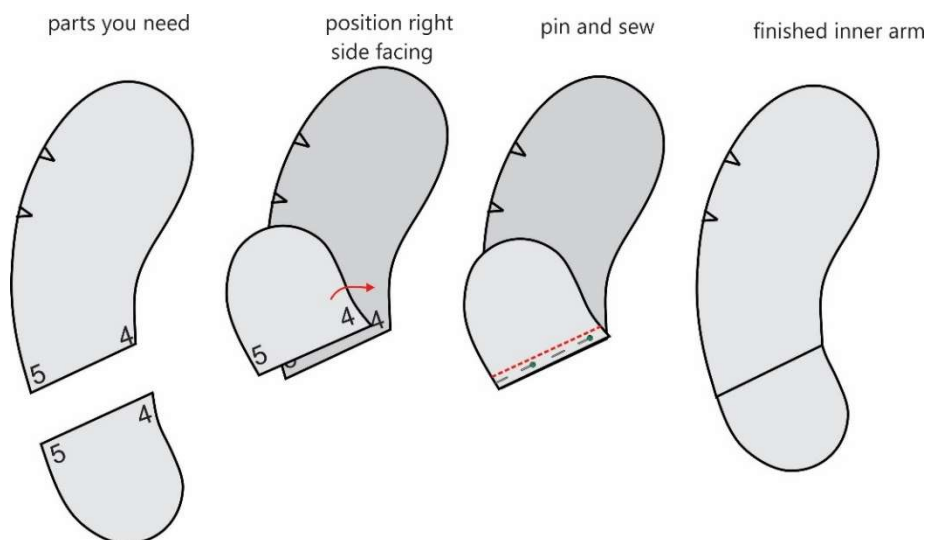
- ♥ Next, align the Foot Pad (D1) to the Leg (D) opening.
- ♥ Match up the dot marking with the seam (7 to 7 and 6 to 6) and pin with needles, then arrange the rest of the footpad with the leg opening.
- ♥ Pin and sew.



- ♥ Make small snips at rounded parts, especially at the seam (points 6 and 7) to prevent bulking.
- ♥ Turn the leg right side out.

ARMS

- ♥ Align one Paw Pad (C2) to the matching Inner Arm (C1).
- ♥ Match up the dot marking (4 to 4 and 5 to 5) right side facing, pin and sew.



- ♥ Next, align one Inner Arm with the matching Outer Arm (C) right side facing.
- ♥ Pin and sew from notch to notch, leaving the opening for turning and stuffing.
- ♥ Make small snips at rounded parts and turn the arm right side out.
- ♥ Repeat the process with the other arm.

