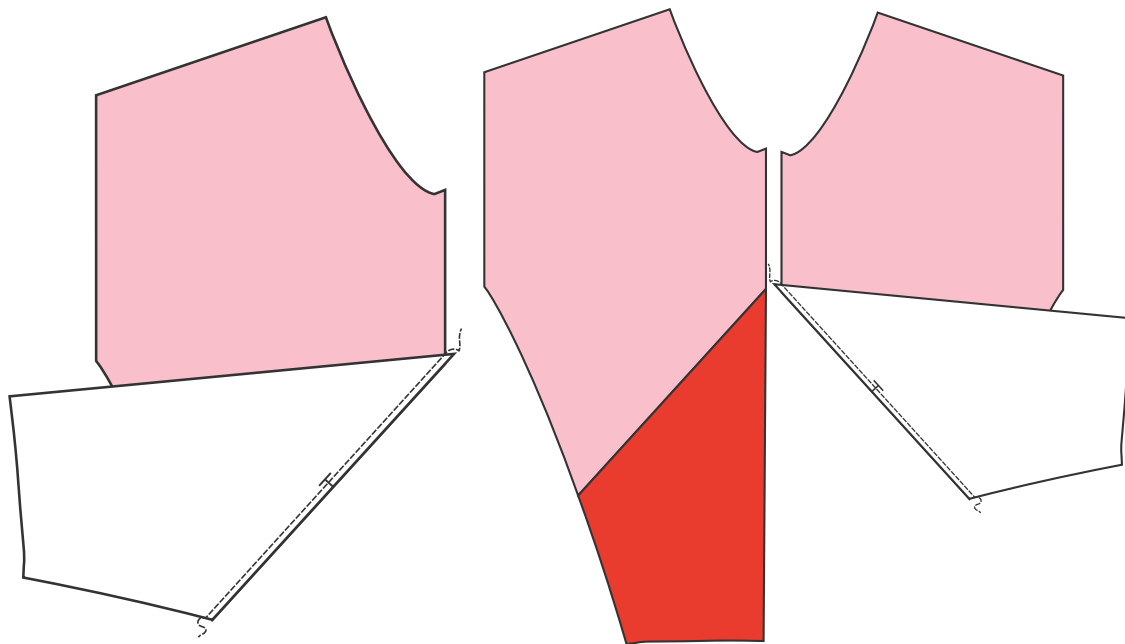


SEW AND DESTROY.

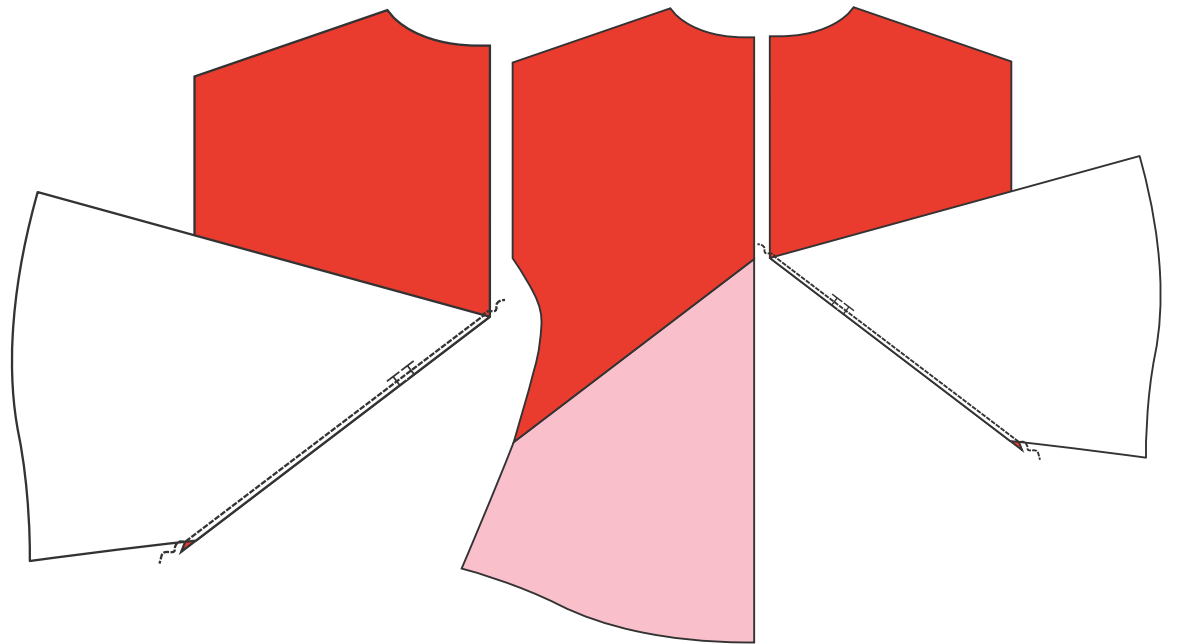
VIEW A

YOU ARE ABOUT TO SEW THIS OFF-COLOR TUNIC AND CRUSH IT THANKS TO THESE DETAILED INSTRUCTIONS. BE SURE TO FOLLOW ALONG WITH THE CORRECT STYLE YOU ARE SEWING.

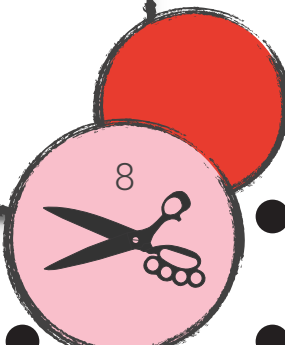
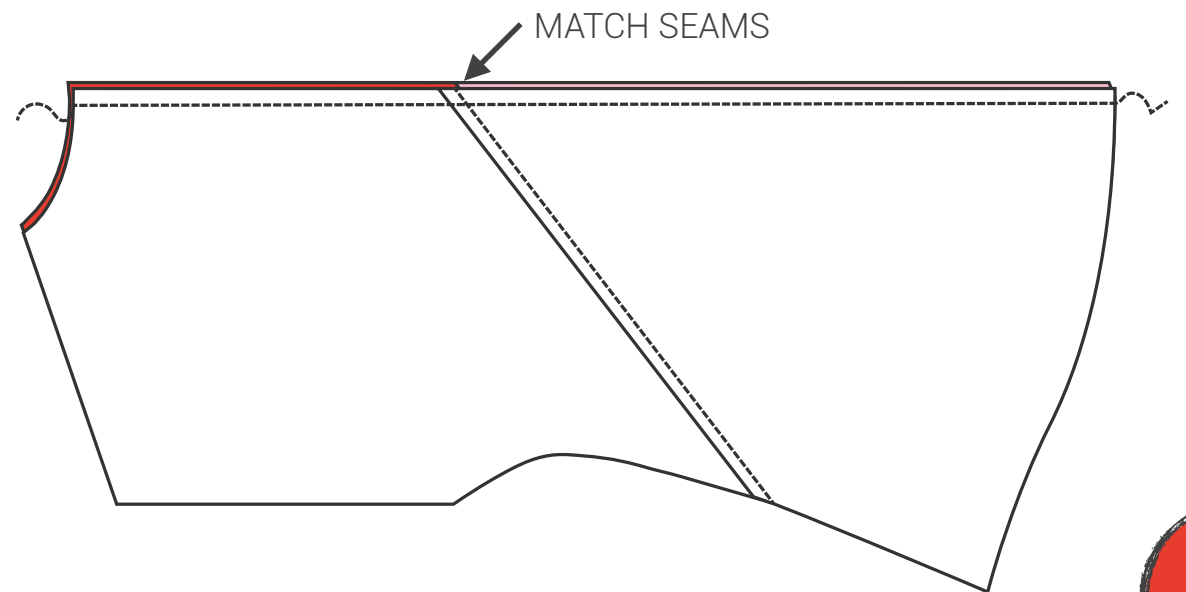
1. FIRST THINGS FIRST, SEAMSTERS. PICK UP ONE OF THE **SIDE FRONT TOP** AND **SIDE FRONT BOTTOM** PIECES. MATCH THE NOTCHES AND GET STITCHING. NOW, REPEAT FOR THE OTHER TWO FRONT PIECES.



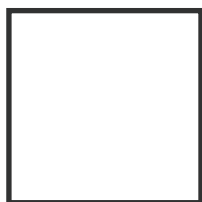
2. AS I LIKE TO SAY, LET'S HIT IT FROM THE BACK. TAKE YOUR **SIDE BACK TOP** AND YOUR **SIDE BACK BOTTOM**, MATCH AT THE NOTCHES, AND SEW ACROSS. REPEAT FOR THE OTHER SIDE.



3. SLAP THE TWO SIDE BACK PIECES TOGETHER AND ALIGN THEM ALONG THE CENTER BACK SEAM, MATCHING AT THE PREVIOUS SEAMS. STITCH DOWN THE CENTER BACK.



----- XS
- - - - - S
===== M
===== L
- - - - - XL
----- XXL



1" x 1"
TEST SQUARE

off-color tunic

A4 FORMAT

#OFFCOLORTUNIC
#SEWANDTELLPATTERNS

SEWANDTELLPATTERNS.COM



off-color tunic

#OFFCOLORTUNIC
#SEWANDTELLPATTERNS

6 - SIDE FRONT BOTTOM
VIEW A OR B
CONTRAST FABRIC

