

MATERIALS

Recommended fabrics : a light-weighted fabric such as a cotton (double gauze, voile, batiste or poplin) for a voluminous and airy version or a viscose for a less voluminous but more fluid version. Favour the lightest fabrics with a less than 120g/m² weight (i.e. 170g/linear meter with a 140 cm width).

Any size you are and with a 140 cm fabric width, get at least for :

- The blouse version : 150 cm + for a sleeveless or frill sleeves version : 40 cm / for a long sleeves version : 80 cm / a gathered sleeves version : 120 cm
- The dress version : 190 cm + for a sleeveless or frill sleeves version : 40 cm / for a long sleeves version : 80 cm / a gathered sleeves version : 120 cm

For example, for a frill sleeves blouse, you will need : 190 cm fabric. For a gathered sleeves dress : 310 cm.

Other materials :

- Lining. Any size you are and with a 140 cm lining width, get 90 cm for the blouse version / 110 cm for the dress version.
- 15 cm interfacing if you choose a bottom of sleeves with cuffs.
- Thread and needles that suit your fabric.
- Buttons (diam.1.5 to 2.5 cm) : 1 for the neckline + 2 if you add cuffs to your long sleeves.

Optional : you can buy 4 cm width bias if you don't want to make them yourself. They will be used for the neckline and the armholes of the sleeveless and frill sleeve versions and will be hidden inside the garment.

Exact measurement are visible on the pattern but 2 m will be enough for any version/size.

SIZE

Measure your breast at its highest level and your hips at your thighs joint bone just above the crotch. Between 2 sizes, I recommend the smallest size as the garment is full.

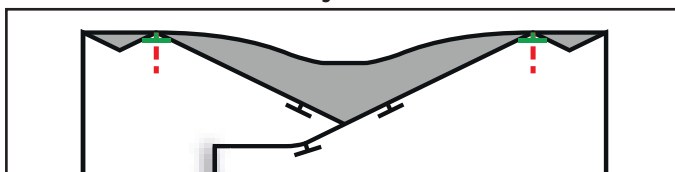
cm	34	36	38	40	42	44	46
Bust measurement (A/B cup)	80	84	88	92	96	100	104
Bust measurement (C/D cup)	84	88	92	96	100	104	108
Bust measurement (E/F cup)	88	92	96	100	104	108	112
Hips measurement	86	90	94	98	102	106	110

CUTTING INSTRUCTIONS (+/- 2h)

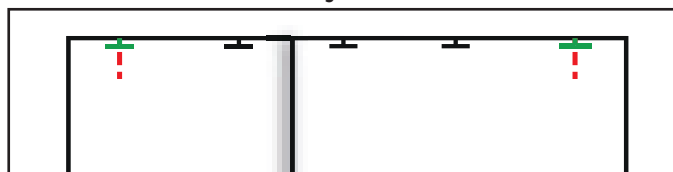
- Wash and iron your fabric properly before cutting.
- Pin your pattern pieces making sure the straight grain is parallel to the edge of the fabric. Also pay attention to the way of patterns for printed fabrics.
- **Remember to cut the fabric with scissors along the whole length of each notch ("T", usually 0.5 cm, sometimes more) and also mark with a chalk or a contrast colour thread each marking (cross).**

Tips and tricks : I pass a thread through the middle of each cross when the pattern is pinned on the fabric. The marking is thus visible both on right and wrong sides of the fabric. Once the garment is assembled, I just have to pull the threads to remove all the markings.

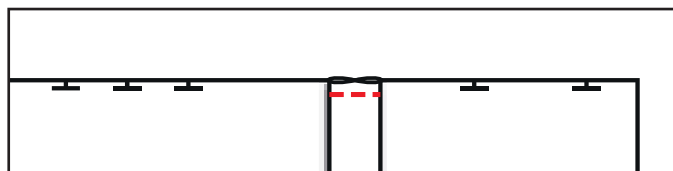
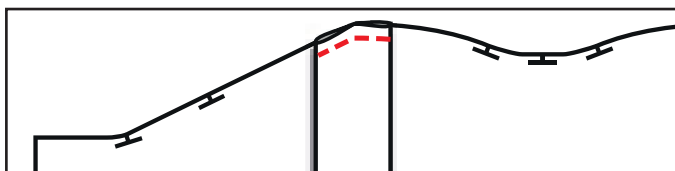
Lining - Front :



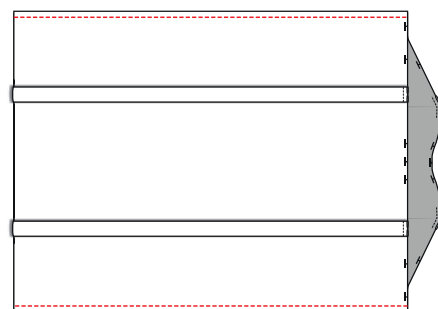
Lining - Back :



2/ Distribute each pleat interior evenly on either side of its seam, pin and hold it with a stitch at 0.7 cm from the top edge of the lining.



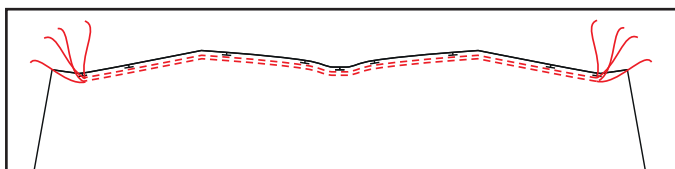
3/ Pin the **sides of the Front and Back linings** together, wrong sides together. Stitch at 1 cm. Iron seams open.



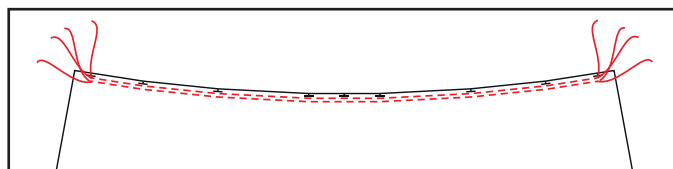
Bottom of the fabric garment :

1/ Stitch 2 rows of **gathering stitches** on the top edges of the Bottom-Front (19) and Back (20) between the notches next to the sides. In order to do that : lengthen the stitch length on your machine (4 to 5) and stitch 2 seams with no backstitch, at 0.7 cm then 1.2 cm from the edges. Leave around 10 cm of exceeding thread at each side of the stitch.

Bottom - Front :

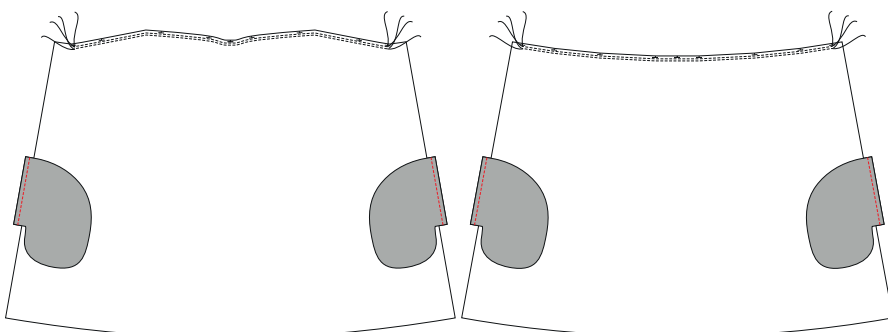
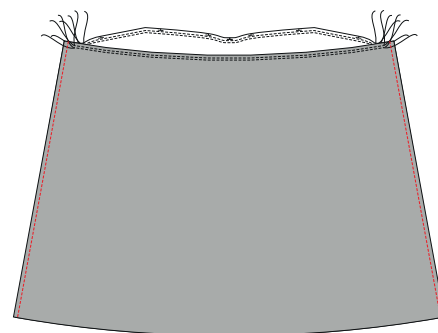


Bottom - Back :



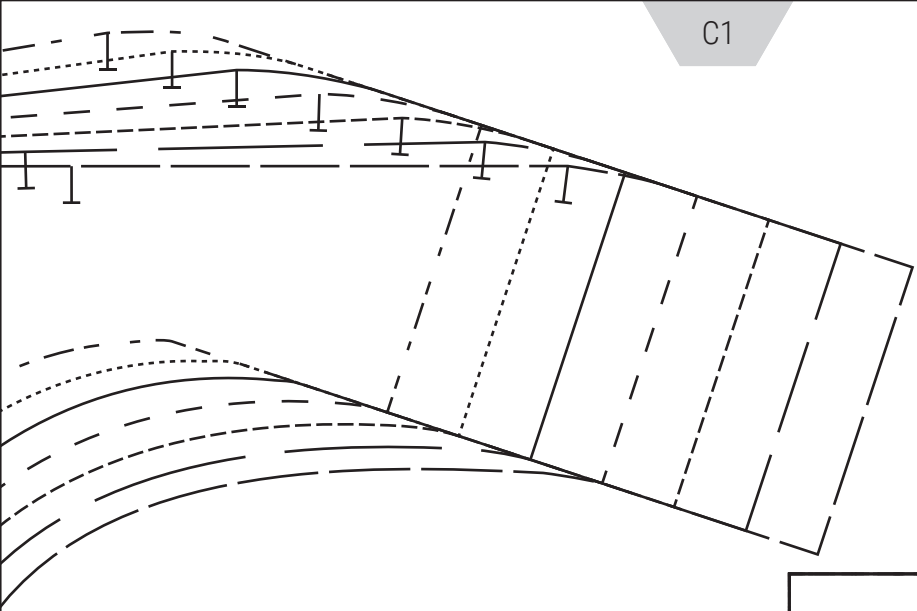
Blouse or without pockets dress versions (+/- 5 min) :

2/ Pin the **sides** of the Bottom-Front and Bottom-Back together, right sides together. Stitch at 1 cm. Iron seams open.



With pockets dress version (+/- 25 min) :

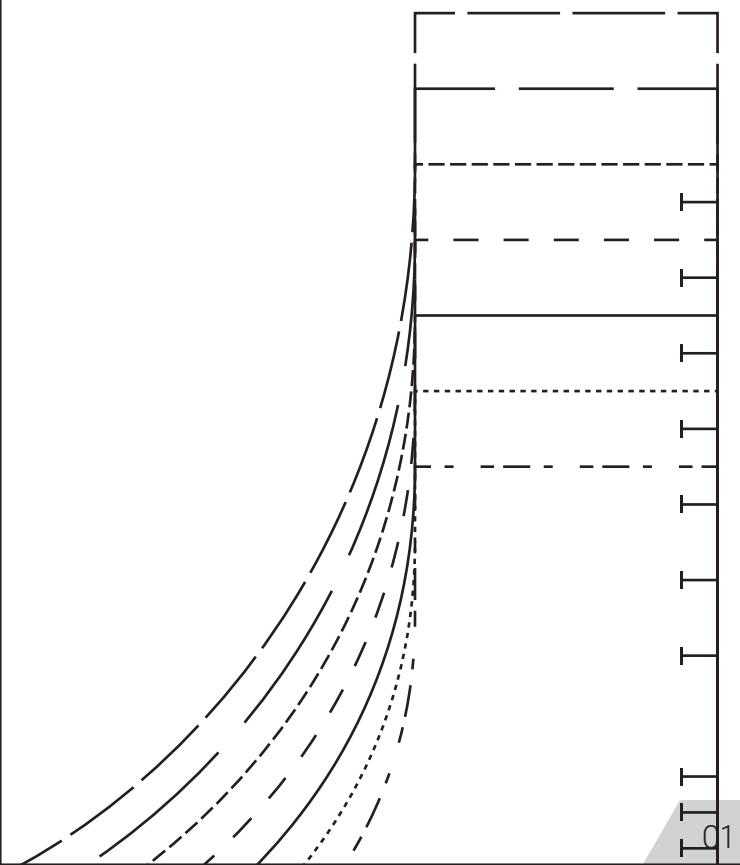
2/ Pin the straight sides of the **Pockets** (23) on the "rectangles" of the Bottom-Front and Bottom-Back, right sides together. Stitch at 1 cm. Iron seams open.



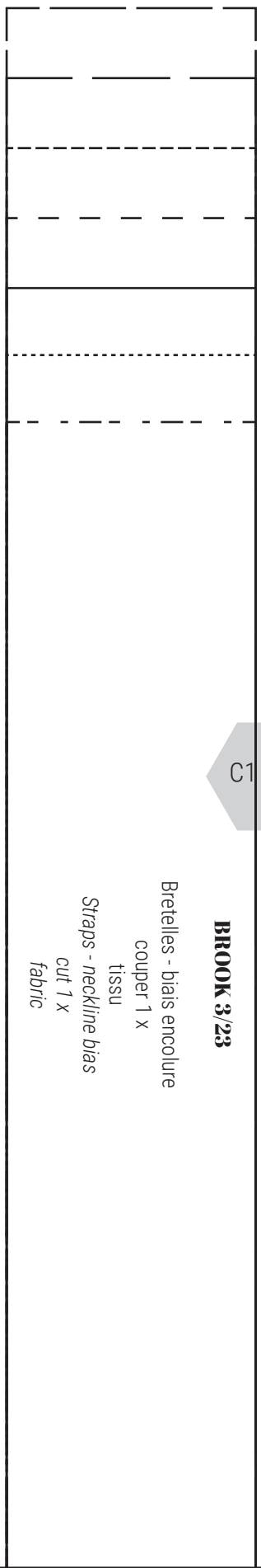
C1



C1



C1



C1

BROOK 3/23

Bretelles - biais encolure
couper 1 x
tissu
Straps - neckline bias
cut 1 x
fabric

BROOK 4/23

Biais emmanchures - Bretelles
couper 2 x
tissu
Armholes bias - Straps
cut 2 x
fabric