

MATERIALS

Recommended fabrics : a light-weighted fabric such as a viscose for a fluid version or a cotton batiste or poplin for a more voluminous and airy version. If you have already sewn some (I specify because it is expensive, a little "slippery" to sew BUT with a magnificent style), you can also use a fluid silk type crepe, twill or mousseline/chiffon.

Any size you are and with a 140 cm fabric width, get at least for :

- The top of the garment : sleeveless or frill sleeves version : 75 cm / long sleeves version : 130
- Plus the bottom of the garment : blouse version : 130 cm / dress version 200 cm

For example, for a frill sleeves blouse, you will need : 205 cm fabric. For a long sleeves dress : 330 cm.

Other materials :

- Lining : 35 cm for pockets. You also can use the same fabric as the garment.
- Interfacing : 50 cm for the facing and the buttonholes.
- Elastic thread : 1 cm max width. Regarding the length you can either refer to the table below or (more precisely) take your waist measurement + your under bust one (just under your breast).
- A safety-pin or an elastic bodkin to pass the ties through.
- 4 eyelets (11 mm diam.) if you cannot make buttonholes.
- Thread and needles that suit your fabric.

Optional :

- You can replace the ties with 1 cm width ribbons if you don't want to make them yourself.
- You can buy 4 cm width bias if you don't want to make them yourself. They will be used for the armholes of the sleeveless and frill sleeve versions and will be hidden inside the garment.

SIZE AND YARDAGE

Measure your breast at its highest level. Between 2 sizes, I recommend the smallest size.

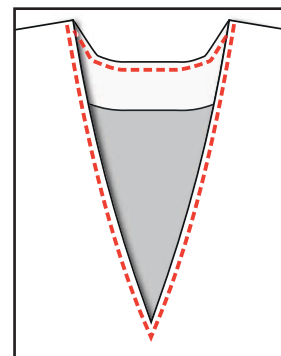
cm	34	36	38	40	42	44	46
Bust measurement (A/B cup)	80	84	88	92	96	100	104
Bust measurement (C/D cup)	84	88	92	96	100	104	108
Under bust - Elastic length (1 cm max. width)	67	72	77	82	87	92	97
Waist - Elastic length (1 cm max. width - dress only)	60	64	68	72	76	80	84
Bias length (if bought)	94	97	100	103	106	109	112
2 ties length (if bought / waist + bust)	268	276	284	292	300	308	316

CUTTING INSTRUCTIONS (+/- 1h)

- Wash and iron your fabric properly before cutting.
- Pin your pattern pieces making sure the straight grain is parallel to the edge of the fabric. Also pay attention to the way of patterns for printed fabrics.
- **Remember to cut the fabric with scissors along the whole length of each notch ("T", usually 0.5 cm, sometimes more) and also mark with a chalk or a contrast colour thread each marking (cross).**

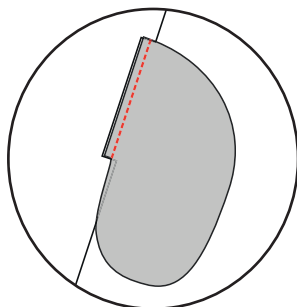
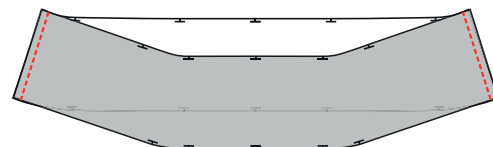
Tips and tricks : I pass a thread through the middle of each cross when the pattern is pinned on the fabric. The marking is thus visible both on right and wrong sides of the fabric. Once the garment is assembled, I just have to pull the threads to remove all the markings.

5/ Turn the facing into the garment. Iron again to bring the seam and the neckline tip out. Pin the facing to the garment. **Topstitch** at 0.5 cm from the edge to hold.

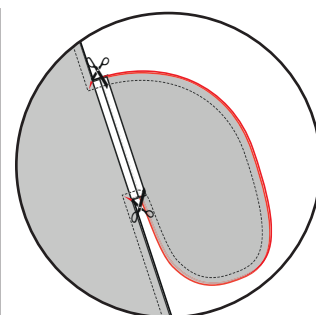
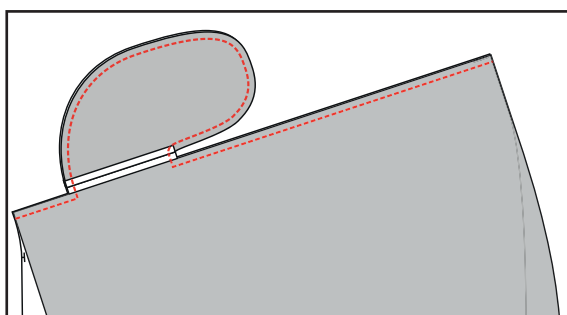


Bottom of the garment - Dress version (+/- 1h) :

1/ Pin the **sides** of the Middle - Dress Front and Back (3 & 8), right sides together. Stitch at 1 cm. Iron seams open.

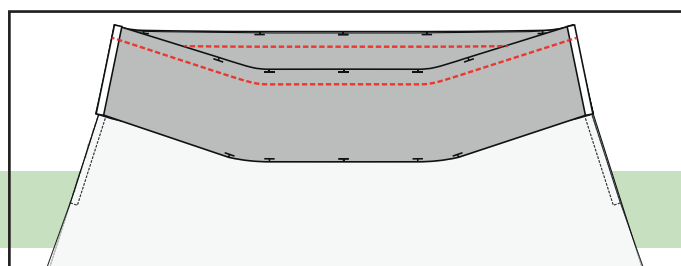
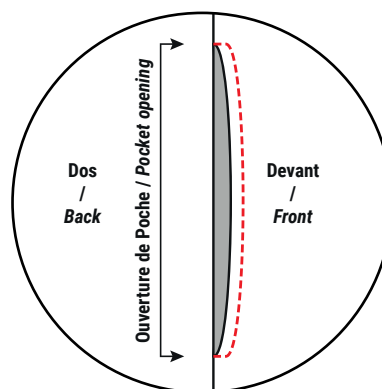


2/ Pin the straight sides of the **Pocket sacks** (7) on the "rectangles" of the Bottom - Dress Front (4) and Bottom - Dress Back (9), right sides together. Stitch at 1 cm. Iron seams open.



3/ Pin the **sides** of the Bottom - Dress Front and Bottom - Dress Back, right sides together, making sure to align the pockets. Stitch at 1 cm through the edge of the pockets. Notch at 0 the 2 angles at each pocket to be able to open the side seams. Iron seams open (except pockets). Overlock (or zig-zag stitch) the edges of the 2 seam allowances of the pockets together.

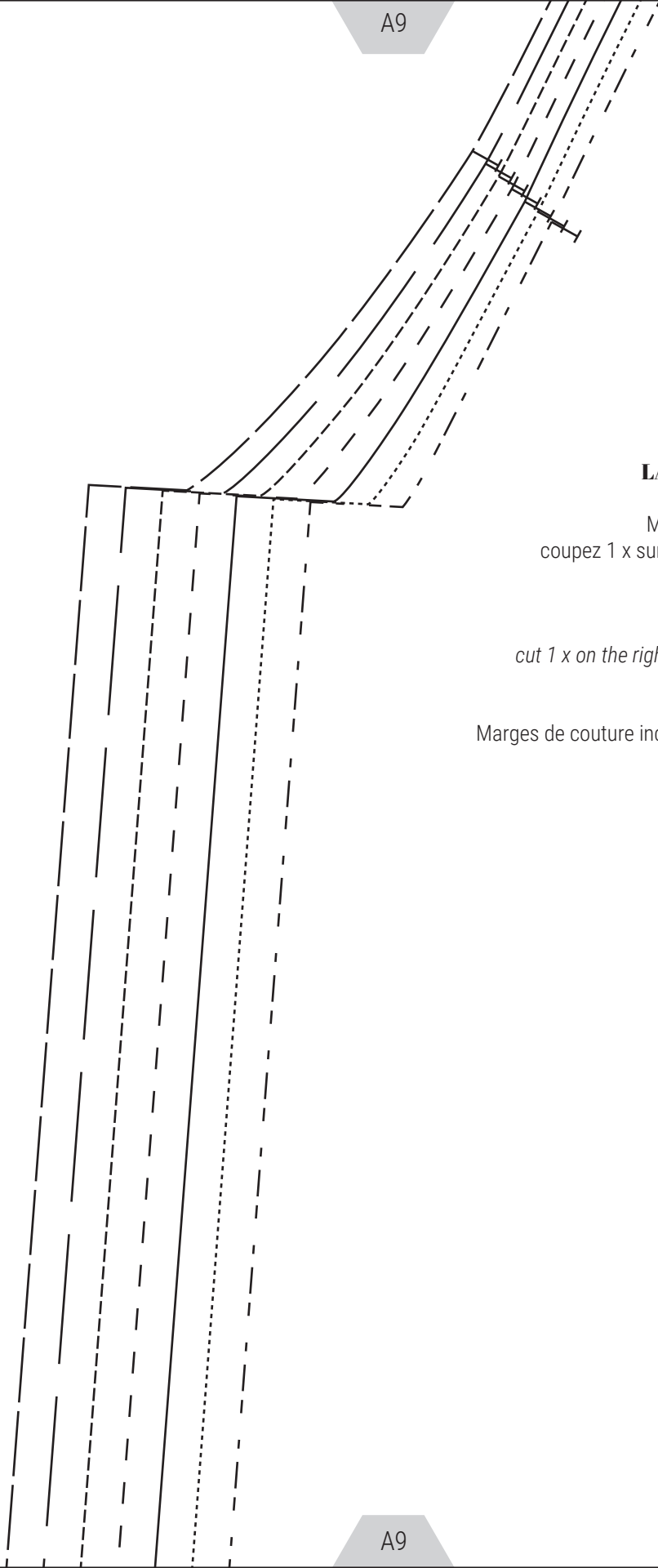
4/ Turn the garment on its right side with the pocket sacks frontward. Iron to mark the straight fold of the pocket opening. Topstitch the fold of the **pocket opening** at 0.5 cm from the edge to keep the pockets frontward. Iron.



5/ Pin the **Middle to the Bottom** of the garment, right sides together, making sure to (very important) align the notches and side seams. Stitch at 2 cm. Iron seams open then downwards. Overlock (or zig-zag stitch) the 2 seam allowances together.

Tips and tricks to help you stitch at 2 cm from the edge : use the grid on the throat plate or stick a piece of tape at 2 cm from your needle.

A9



LAUREN 12/17

Manche longue
coupez 1 x sur l'endroit + 1 x sur l'envers
tissu

*Long sleeve
cut 1 x on the right side + 1 x on the wrong side
fabric*

Marges de couture incluses / *Seam allowances included*

A9

A9

A9