

LINING

N°	Piece name	Fabric cut	Comments	Worn side
16	Front lining	1 x right side + 1 x wrong side	Lining	Right side = Left / Wrong side = Right
17	Pocket lining (Optional : large pocket)	1 x	Lining	Right
18	Pocket sack B	1 x right side + 1 x wrong side	Lining	Right side = Left / Wrong side = Right
19	Pocket sack A	1 x right side + 1 x wrong side	Lining	Right side = Right / Wrong side = Left
20	Right back lining	1 x	Lining	Right
21	Left back lining	1 x	Lining	Left
22	Sleeve lining	1 x right side + 1 x wrong side	Lining	Right side = Left / Wrong side = Right

INTERFACING

N°	Piece name	Fabric cut	Comments	Worn side
23	Pocket piping interfacing	1 x right side + 1 x wrong side	Interfacing	Right side = Left / Wrong side = Right
24	Top back interfacing	1 x right side + 1 x wrong side	Interfacing	Right side = Left / Wrong side = Right
25	Right back bottom interfacing	1 x on the glue-free side	Interfacing	Right
26	Left back bottom interfacing	1 x on the glue-free side	Interfacing	Left
27	Sleeve cap interfacing	1 x right side + 1 x wrong side	Interfacing	Right side = Left / Wrong side = Right
28	Sleeve bottom interfacing	1 x right side + 1 x wrong side	Interfacing	Right side = Left / Wrong side = Right

MATERIALS

Recommended fabrics :

- For a mid-season jacket : a suit type, thin wool (flannel, gabardine, glen plaid,...) or a mid-heavy cotton (gabardine, jacquard, denim, ...). No elastane or knit.
- For a coat, select a thicker wool like a bouclette, a wool fleece, a loden,... No elastane or knit.
- Do not wash your wool fabric before cutting it.

Other materials :

- Lining
- Interfacing suitable for your fabric. Must keep the fabric soft not stiff
- Polyester yarn
- 2 buttons (Diameter 2.5 cm to 3 cm)
- Recommended : an interfacing straight grain roll, black or white (1 cm width) and a pair of thin shoulder pads (0.5 cm thick)

Optional : a strap type or gros-grain band (4 cm width, 40 cm length) and a side release buckle (4 cm width).

SIZE AND YARDAGE

Measure your bust at its fullest part, your waist at its emptiest part and your hips at your thighs joint bone just above the crotch. Between 2 sizes, I recommend the smallest size.

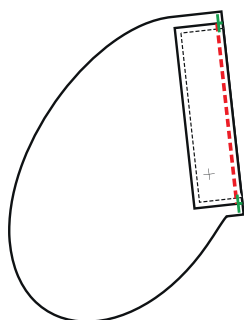
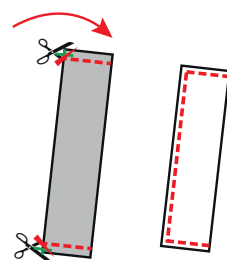
cm	34	36	38	40	42	44	46
Bust measurement	80	84	88	92	96	100	104
Hips measurement	86	90	94	98	102	106	110
Fabric length (140 cm width)	250	260	260	270	270	280	280
Lining length (140 cm width)	180	180	180	180	180	200	200
Interfacing length (90 cm width)	250	260	260	290	290	310	310

For each slanted welt pocket (+/- 1h30) :

1/ Fold the **Pocket piping** (3) width in 2, right sides together as per the notches.

Pin the ends and stitch at 1 cm. Trim the corners to open one of the two seam allowances with the tip of your iron. Turn the piping on its right side bringing the corners out (with a pencil for example) and iron.

Topstitch at 0.5 cm from the 3 sewn edges.



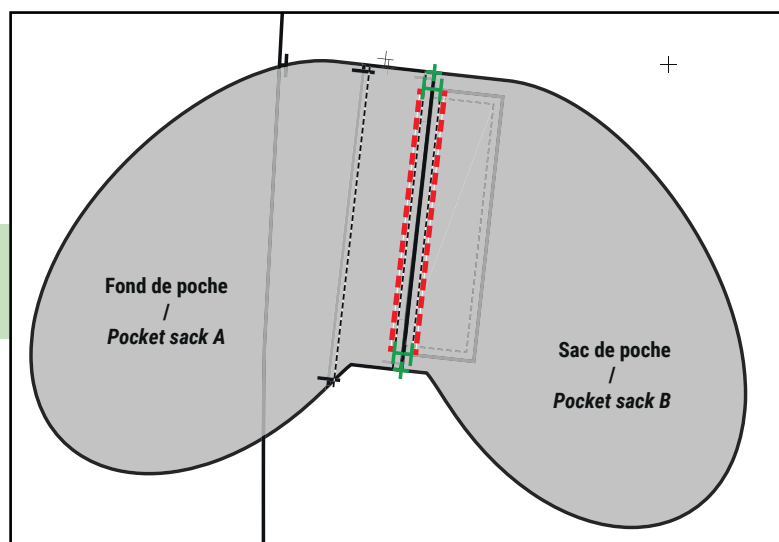
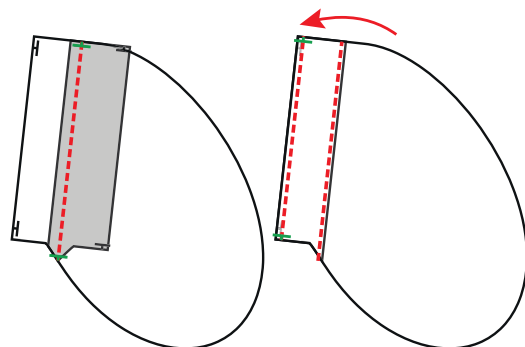
2/ Pin the unsewn edge of the piping against the straight edge of the Pocket sack B (18) between the notches, right sides together and un-interfaced side of the Piping against the pocket sack B.
Stitch at 0.5 cm.

3/ Pin the **Pocket sack facing** (4) against the Pocket sack A (19), making sure to match the notches.

Stitch at 1 cm from the edge of the Pocket sack facing (4) from a notch to another. Iron seams open.

Turn the facing over, iron and topstitch at 0.2 cm from the seam.

Stitch then at 0.5 cm from the straight edge.



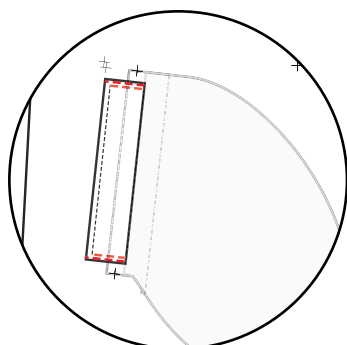
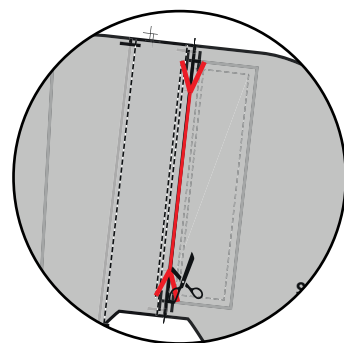
4/ Pin the straight edge of the **Pocket sack A** against the 1 and 4 **Front** (1) markings, right sides together with the bottom of the pocket sack towards the side of the garment. Stitch at 0.7 cm between the notches.

Tips and tricks to help you stitching at 0.7 cm from the edge : have in mind that it is usually the distance between the needle and the edge of the presser foot (to check with yours).

5/ Proceed in the same way for the straight edge of the pocket sack B by placing the sack towards the Middle Front of the Front. The 2 pocket sacks are thus facing each other.
Iron seams open.

6/ With scissors, roughly cut the fabric of the Front in a straight line between the 2 and 3 markings i.e. between the edges of the 2 pocket sacks.

Then from each marking, cut in V until the ends of the 2 seams sewn in the 2 previous steps (without cutting them).



7/ Turn the 2 pocket sacks towards the wrong side of the Front through the opening. Only the Pocket Piping is turned towards the side of the Front to cover the opening of the pocket and remains visible on the right side of the garment. The V-shaped tips are in the pocket opening, sandwiched between the Piping and the Facing.
Iron properly to open and flatten the seams.

8/ Pin both widths of the Pocket Piping on the Front and topstitch them at 0.5 cm (in the existing seam) then at 0.2 cm from the edge. Cut the V-shaped tips still visible into the opening.

A9

A9

A9

A9

BIANCA 7/28

Poche
couper 1 x
tissu + thermocollant

*Pocket
cut 1 x
fabric + interfacing*

Marges de couture incluses / *Seam allowances included*