

One dress with four variations



TOSCAminni
Schnittmanufaktur

Dress Louann



Art.-Nr: 2-K-35

Size: 92-140

Level of Difficulty:



www.toscaminni.de
Designerin: Silvia Maria P. Vogt

TOSCAminni

Schnittmanufaktur



Sectional drawing



Shopping List Dress Louann

Material

Jersey

As desired, elastic lace

Fabric consumption – Fabric width 1,40m

Size	- 104	- 128	- 140	- 140
	1,00m	1,20m	1,40m	1,50m

As there is also jersey that is 1.60m wide, please lay out the pattern beforehand to calculate the amount of fabric. If you work a seam in the back of the top and in the skirt, you can also save fabric if your favourite fabric might just be enough.

www.toscaminni.de
Designerin: Silvia Maria P. Vogt

Measurement table babies and girls

Size	68	74	80	86	92	98	104	110	116	122	128	134	140	146	152	158	164	170
1 Bust size	48	50	50,5	54	55	56	57	58	60	62	64	66	69	72	75	78	82	86
2 Waist size	47	48	51	50	51	52	53	54	55	56	57	58	60	62	64	65,5	67	73
3 Hip size	48	50	56	53	55	57	59	61	63	66	69	72	75	78,5	82	85,5	89	92,5
4 Back length	18,1	19,4	20,7	22	23,2	24,4	25,6	26,8	28	29,2	30,4	31,6	32,8	34,5	36,2	37,9	39,6	41,3
5 Arm length	21	23,5	26	28,3	30,6	32,9	35,2	37,5	39,8	42,3	44,8	47,3	49,8	52	54,2	56,4	58,6	60,8
6 Side trouser length	35	39	43	48,6	53	57,4	61,8	66,2	70,6	75,3	80	84,7	89,4	93,2	97	100,8	104,6	108,4
7 Shoulder width	6,2	6,6	7	7,1	7,4	7,7	8	8,3	8,6	8,9	9,2	9,5	9,8	10,2	10,6	11	11,4	11,8



This is how the length is measured:

Determine the size of the child or the height of the body:
Place your child slightly leaning against a wall. Place a book on the head and mark the height on the wall.
You can use the mark to measure and you will know how tall your child is.

Bust size:

Put a tape measure around your child's chest, it goes over the chest and shoulder blade.

Waist measurement:

Put a tape measure around the waist

Hip size:

Place the tape measure around the widest part of the hips.

Side trouser length:

Measure the length from the waist to the bottom of the foot

Shoulder width:

You measure from the base of the neck to the shoulder point

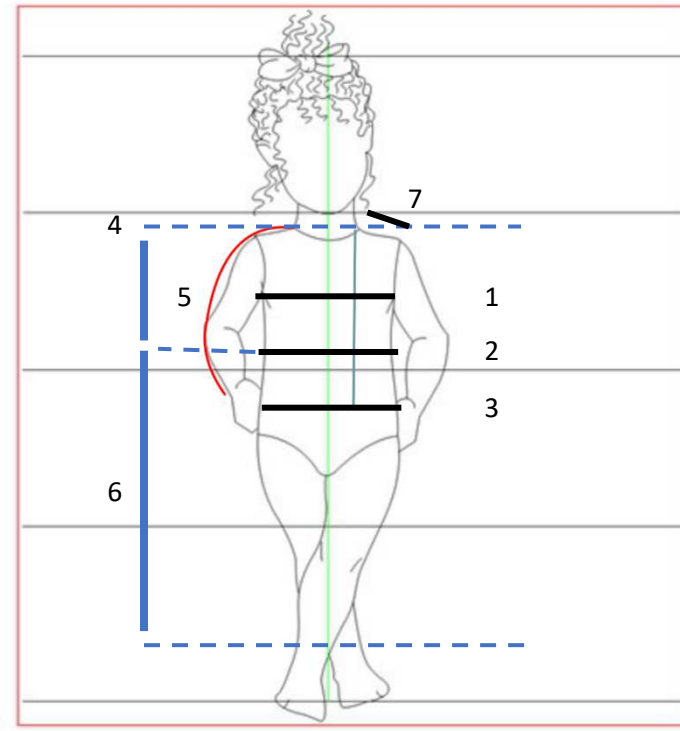
Sleeve length:

You measure with slightly angled arm from the shoulder point with set-in sleeves height of the arm ball.

For raglan sleeves from the neck

Back length:

Measured from the first cervical vertebra to the waist.



You have now taken your measurements, compared them to the pattern and realised that you need to adjust the pattern.

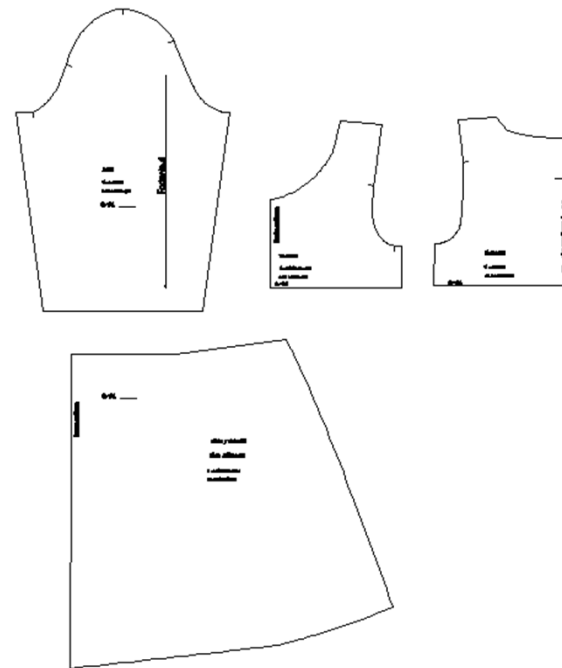
On the following pages you can see how you can change the length of your cut.



Sectional drawing :



Technical drawing:

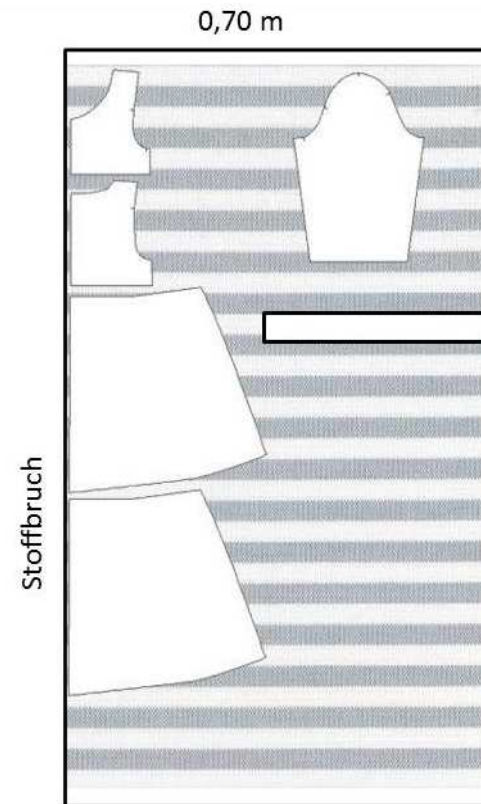
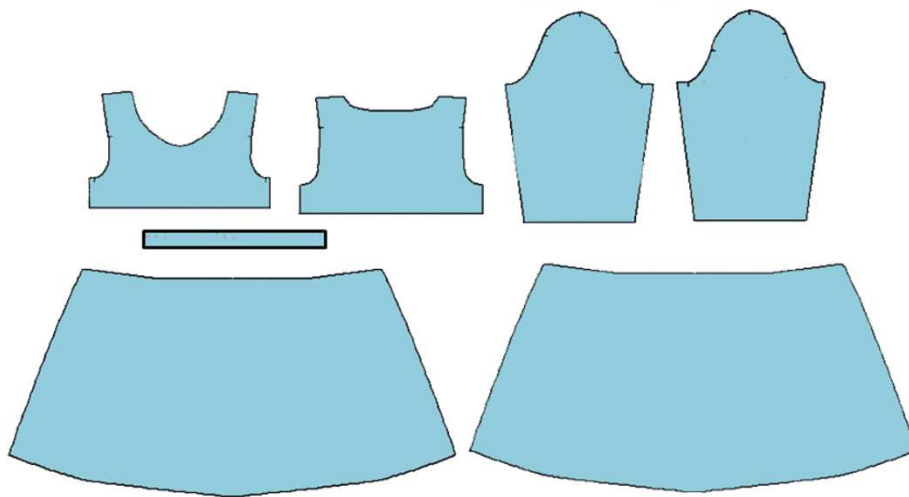


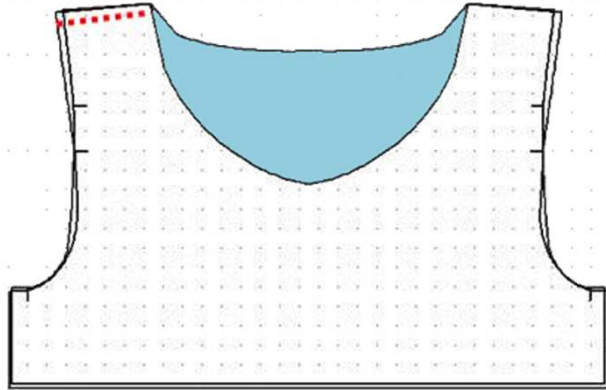
Here we go:

Cut out the paper pattern, place on fabric and cut to size. Then transfer the markings to the pattern pieces.

The black dots on the pattern are the marks that you should transfer to the fabric. Either mark the fitting points with chalk or cut small triangles in the hem allowance.

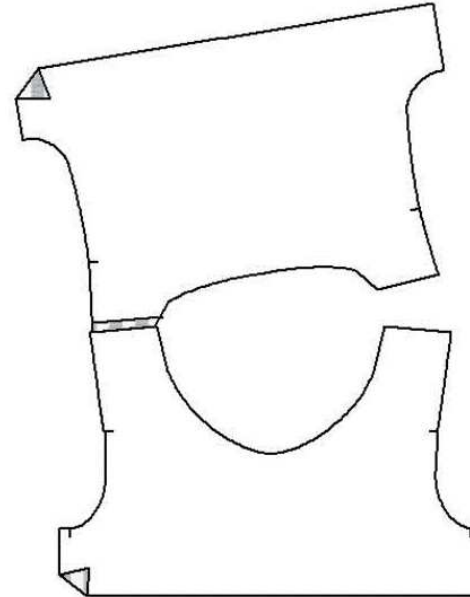
Cutted parts:





Place the upper front and back pieces right sides together - sew a shoulder seam.

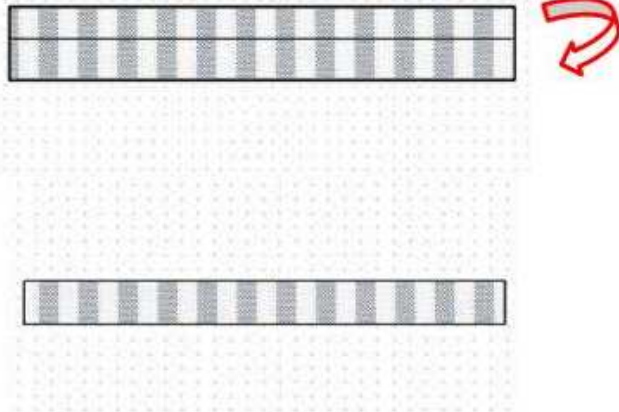
We will sew everything here with the overlock.
If you don't have an overlock, select an appropriate overlock stitch on your sewing machine.



The other shoulder seam remains open



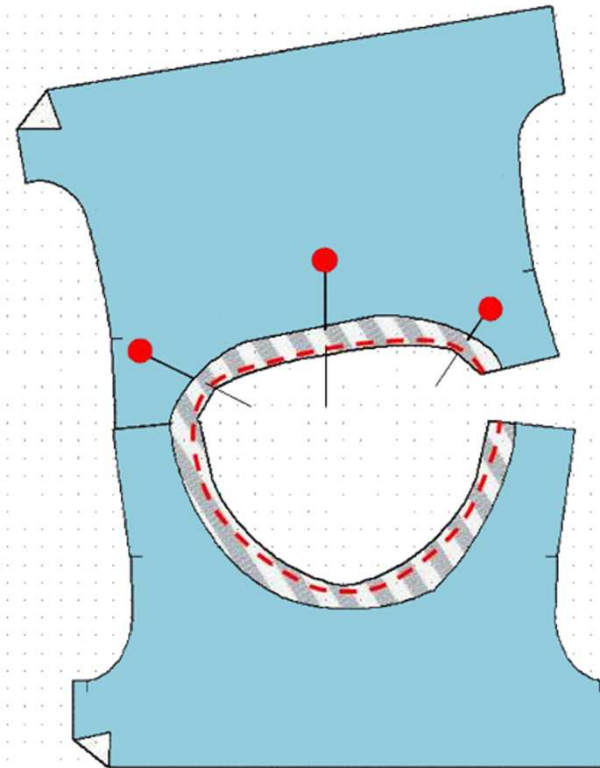
Fold the trim for the neckline in half lengthways



Iron if necessary, the strip is only half as wide and lies double



When sewing with the overlock, be careful not to accidentally sew into the needles.

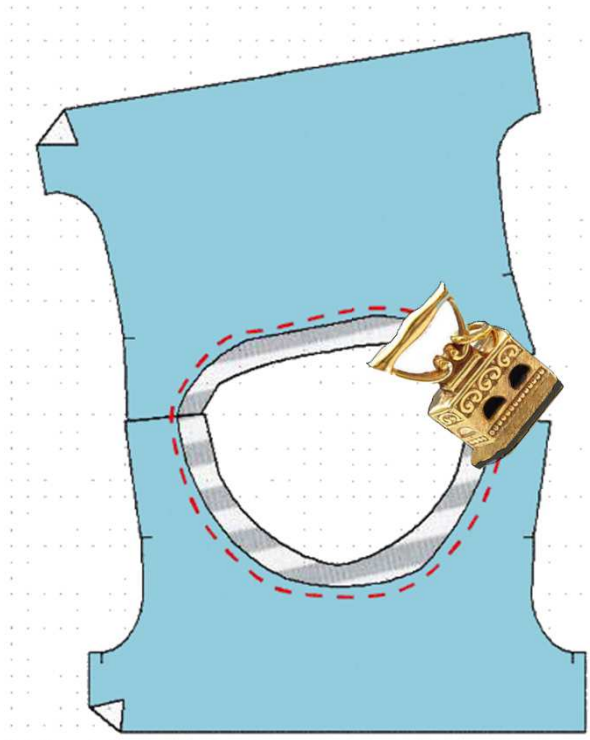


Pin the facing slightly stretched on the right side of the neckline.

Sew

We have only given a general length in the cut for the fascia, cut off the overhanging rest

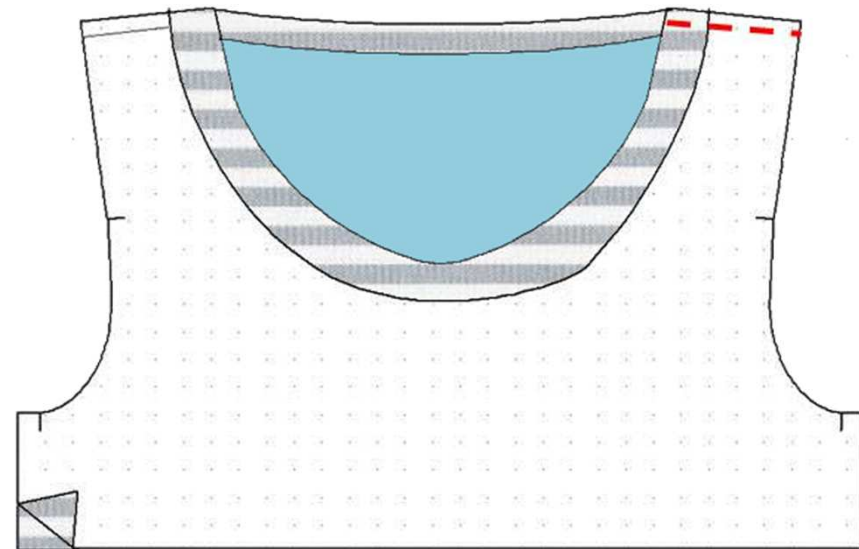




Press neckline

Topstitch again next to the seam, approx. 1-2 mm.

A cover machine is perfect for this



Sew the second shoulder seam.

If you want to sew the dress sleeveless, the armholes are also sewn with blindfolds,

