

Dress Louann

+ Add on: Wingsleeves

+ Add on: Pleated skirt



Sectional drawing :



#dresslouann

Art.-Nr: 2-K-35

Size: 92-140

Level:



Sewing instructions - pattern



Shopping List Louann

Material

- Jersey, French Terry
- Interlining for the pockets
- As desired, elastic lace for decoration

Fabric consumption 1,40m fabric width

Size:	- 104	- 128	- 140	- 140
	1,00m	1,20m	1,40m	1,50m

As there is also jersey that is 1.60m wide, please lay out the pattern beforehand to calculate the amount of fabric. If you work a seam in the back of the top and in the skirt, you can also save fabric if your favourite fabric might just be enough.

Table of contents:

Licence to use	page 3
Adjusting the sewing machine	page 4
Finding the right size	page 5
Adjusting the cut	page 5
Technical drawing/cutting plan	page 7
Sewing technique: gathering	page 8
Cutting	page 9
Pockets	page 10
Sleeve variations	page 13
Skirt variations	page 16



Licence of use

You will receive a usage licence for each purchased product (pattern / embroidery file / ebook).

Commercial use

All self-made products from our patterns/embroidery files/e-books may be sold on a small scale (50 pieces). However, we insist that we are named as the manufacturer of the pattern/embroidery file/e-book with our name "TOSCAminni Schnittmanufaktur" as well as our internet address: www.toscaminni.de.

The customer may only edit and use the contents beyond the scope stated with the consent of the respective rights holder. If you have any questions, please contact us at info@toscaminni.de.

Copyright

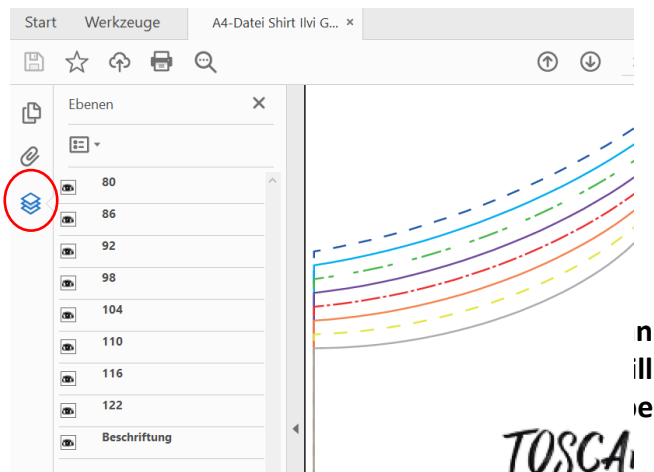
All products from our online shop have been designed and created by us. Our patterns / embroidery file / ebook are protected by copyright and may not be sold, given away, copied or altered.

We own the sole copyright unless expressly stated.

Cut on layers

Each size is saved on its own layer. This makes it possible to show only the sizes you actually want to print. For this function you need Acrobat Reader, which you can download free of charge from the Internet.

Click on the layer symbol in Acrobat Reader and show or hide sizes as you wish or hide.



Lines are drawn around the sheets with rows and pages, so you can use these as a guide when gluing them together.

Tips for beamer users:

Improve the contrast when projecting on dark materials by using the following setting:

File / Edit / Settings / Accessibility (or Shortcut Ctrl+K

activate the check mark "Replace document colours

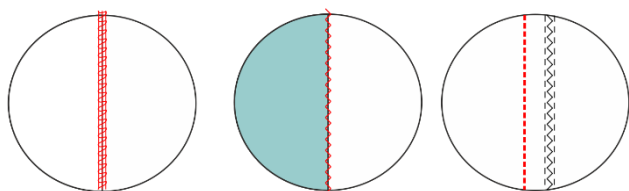
- deactivate the checkmark "Change colour of black text or vector graphics only".



Set the sewing machine to "jersey compatible":

Sewing with the overlock

The easiest way to sew is with an overlock. Make sure you set your overlock differential correctly to prevent the jersey from curling.



A great [>>Video](#) by the way, you can find this at Makerist

If you are sewing with a sewing machine, we recommend that you first sew the seams with a small backstitch (length 2-2.5) and then overcast both layers with an overlock stitch.

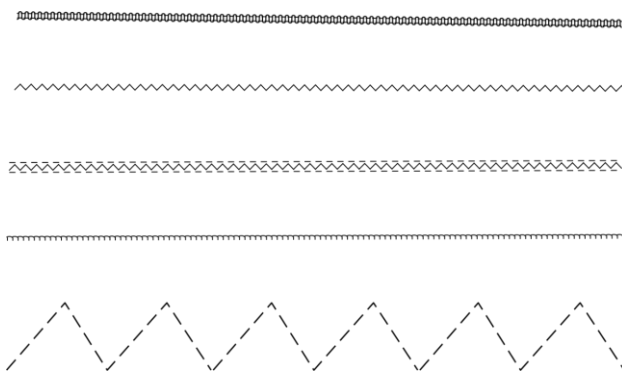
Sewing with the sewing machine

There are also sewing machine feet that have a small cutter built in and also cut the fringe. For jersey you should use an elastic stitch. There are many elastic stitches available with the sewing machine.

Make sure you use the right needles, there are special needles for jersey.

If you don't have an overlock, you can overcast the fabric with a zigzag stitch.

Your sewing machine probably has stitches like this or similar. The triple zigzag stitch is great for elastic hems and for sewing underwear - it is very decorative and durable with the right thread.



Do you know the top feed foot?

Top feed feet are popular for sewing velvet, plaid or striped fabrics so nothing shifts.

What may not be so well known, it is also great for jersey. With a top feed foot, both the bottom layer of fabric and the second layer on top are fed evenly and so the jersey does not curl.



Find the right size

Determine the size of the child:

Place your child slightly leaning against a wall. Place a book on the head and mark the height on the wall. You can use the mark to measure and you will know how tall your child is.

Bust size:

Put a tape measure around your child's chest, it goes over the chest and shoulder blade.

Waist measurement:

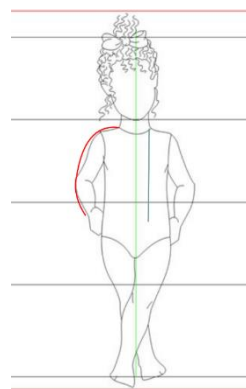
Put a tape measure around the waist

Hip size:

Put the tape measure around the strongest part of the hips

Side trouser length:

Measure the length from the waist to 2cm above the floor



Shoulder width:

You measure from the base of the neck to the shoulder point

Sleeve length:

You measure from the shoulder point with a slightly angled arm, or from the neck with raglan sleeves.

Back length:

Measured from the first cervical vertebra to the waist.

Measurement table

Size	80	86	92	98	104	110	116	122	128
Bust width	50,5	54	55	56	57	58	60	62	64
Arm length	26	28,3	30,6	32,9	35,2	37,5	39,8	42,3	44,8

Information on fit / work preparation

With an ebook or a paper pattern, no matter what brand, you buy a ready-to-wear pattern. This means that you have to adapt your own measurements to this pattern.

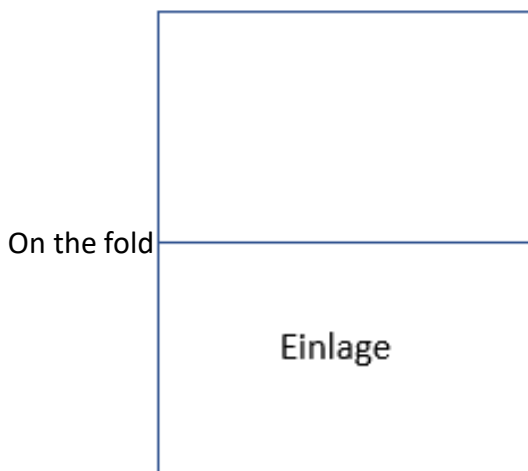
Instructions for adapting the pattern (child)

The child's measurement chart mainly "grows" with the body size. It may well be that your child is between two or more sizes, that is quite normal. In this case you will have to adjust the pattern, see the following page for an example:



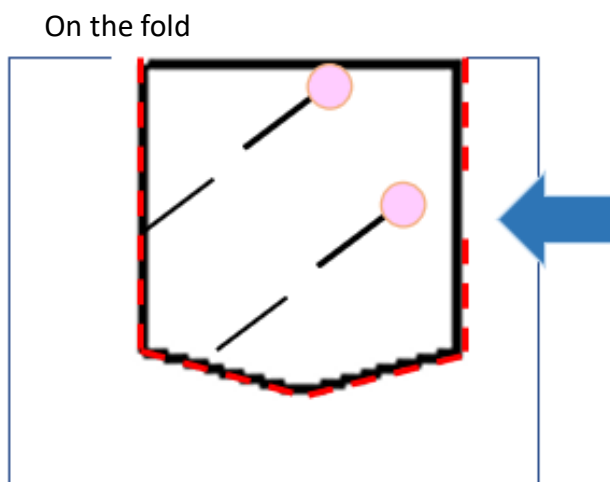
Sewing the pockets

(optional - if you don't want pockets, continue with the next page)



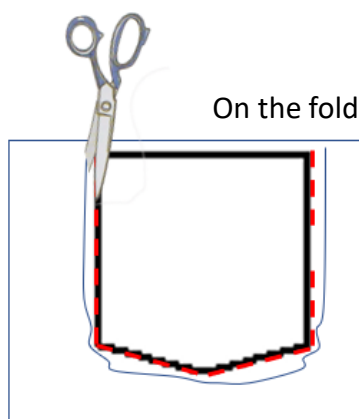
Cut a larger piece of fabric for the pockets, twice as wide as the final size of the pocket, plus a 3cm seam allowance.

Iron interfacing onto one half of the fabric. Iron the interfacing onto the wrong side of the fabric.



Fold the fabric in half - the beautiful sides are on the inside. Place the cut piece on top and mark it with chalk.

Then sew the pocket with a small stitch and leave about 2cm open on one side for turning.



Trim back the seam allowances, to 5mm on the straight sides and 2mm around the corners. Then turn over and iron carefully.

Press the seam allowances from the small opening exactly into the seam.

You can now place the pockets on your jacket in the desired position and sew them on.



For inspiration:

Ruffled skirt - long sleeves and cap sleeves



Tiered skirt + long sleeves - you could also add cotton lace to the skirt - or lengthen it if you like



Congratulations, you did it and you can be proud of yourself!

We would be pleased if you mark your works so that we can admire them.

Hashtags: #toscaminni #shirtdanielle

Are you on Makerist?

You can also show your work here in the [>>sewing show](#) - we would be happy if you link us here and rate the pattern.

Impressum:

Silvia Vogt
TOSCAminni-Schnittmanufaktur
Scheibenstraße 1
94557 Niederalteich
0160-4546016
www.toscaminni.de
info@toscaminni.de
USt-IdNr.: DE 247560793

www.toscaminni.de

