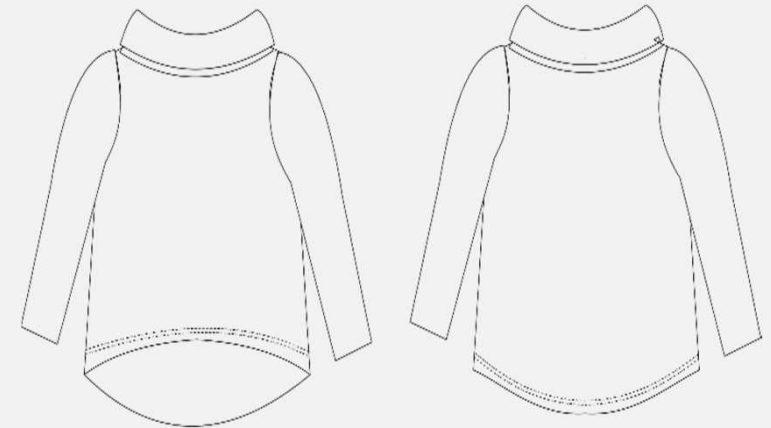


Shirt Lisette

#shirtlisette



Art.-Nr: 1-E-7

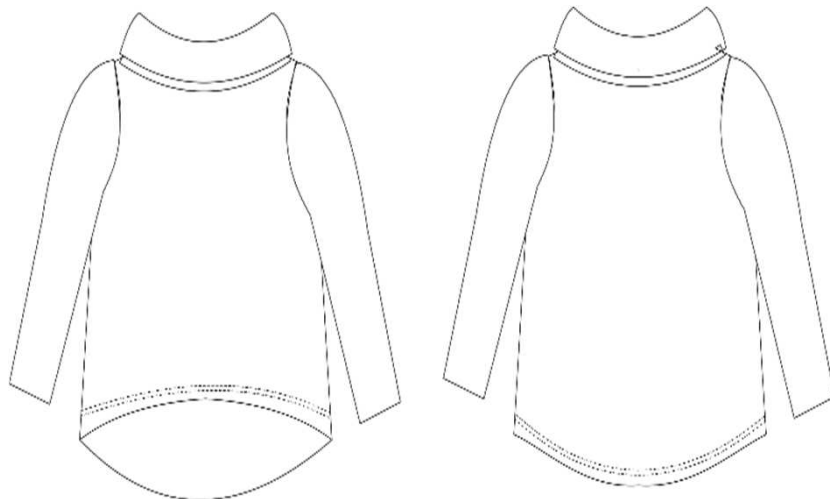
Size: 34-54

Level of Difficulty:





Sectional drawing



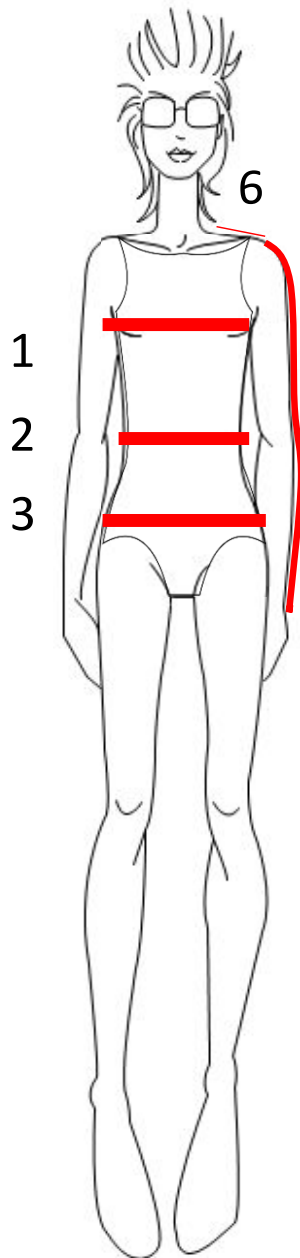
Shopping-List Shirt Lisette

Material

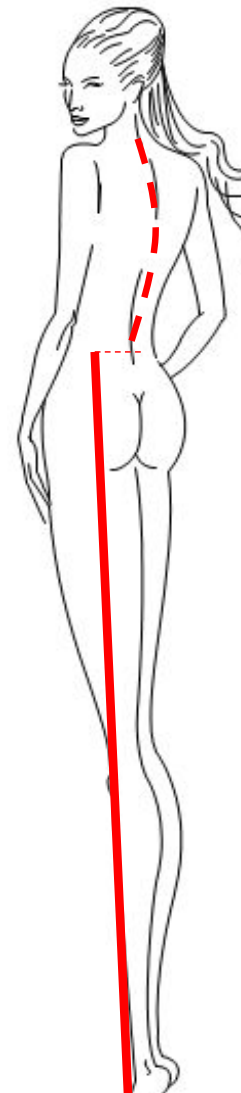
- Jersey
- Light interlining for the collar
- Possibly contrasting woven fabric for the collar
- 2 buttons alternatively 2 Prym press studs

Fabric consumption – Fabric width 1,40m

Size	Long Sleeve	Shor Sleeve
34/40	1,40m	1,10m
42/44	1,50m	1,10m
46/48	1,60m	1,20m
50/52	1,70m	1,20m
54	1,80m	1,30m



- 1 Bust measurement:
The bust is measured horizontally around the body. The tape measure is placed around the highest part of the chest and over the shoulder blades/back.
- 2 Waist measurement:
The tape measure is placed loosely around the waist.
- 3 Hip measurement
The hip is measured around the strongest point
- 5 Arm length:
The arm length is measured with one arm slightly bent, over the elbow to the wrist
- 6 Shoulder width:
From the base of the neck to the ball of the arm



- Back length:
Measure from base of neck to waist
- Side length:
Measure the length from the waist to the floor



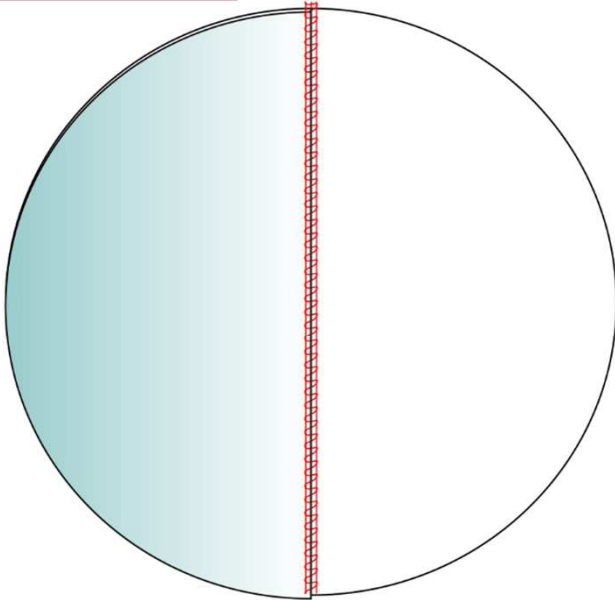
Measurement table

	Size	34	36	38	40	42	44	46	48	50	52
1	Upper bust	80	84	88	92	96	100	104	110	116	122
3	Hip size	86	90	94	98	102	106	110	116	122	128
4	Waist size	62	66	70	74	78	82	86	92	98	104
	Shoulder width	12	12	12	13	13	13	13	14	14	14
5	Sleeve length	59	59	60	60	61	61	61	61	62	62

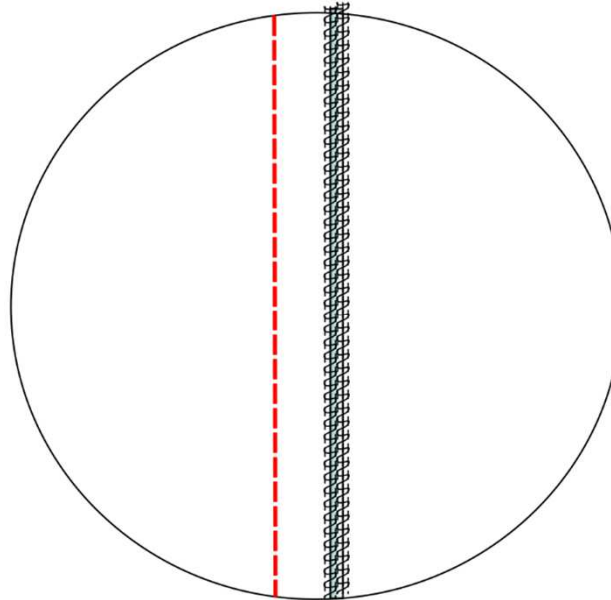




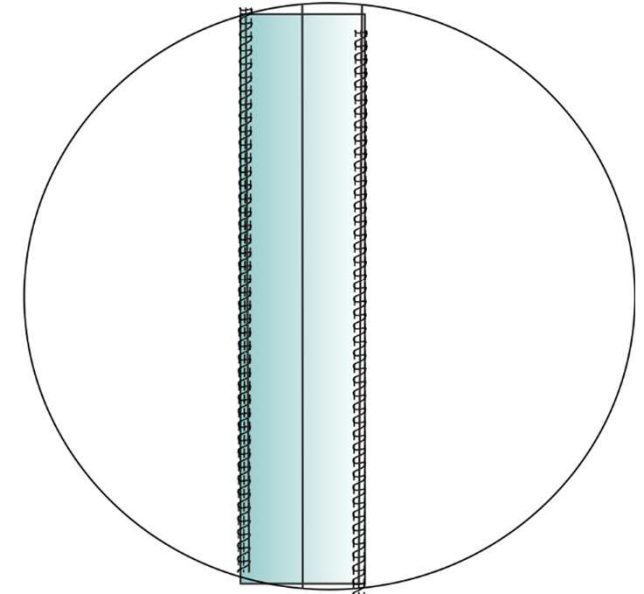
Seams



- Overlock parts on the right side

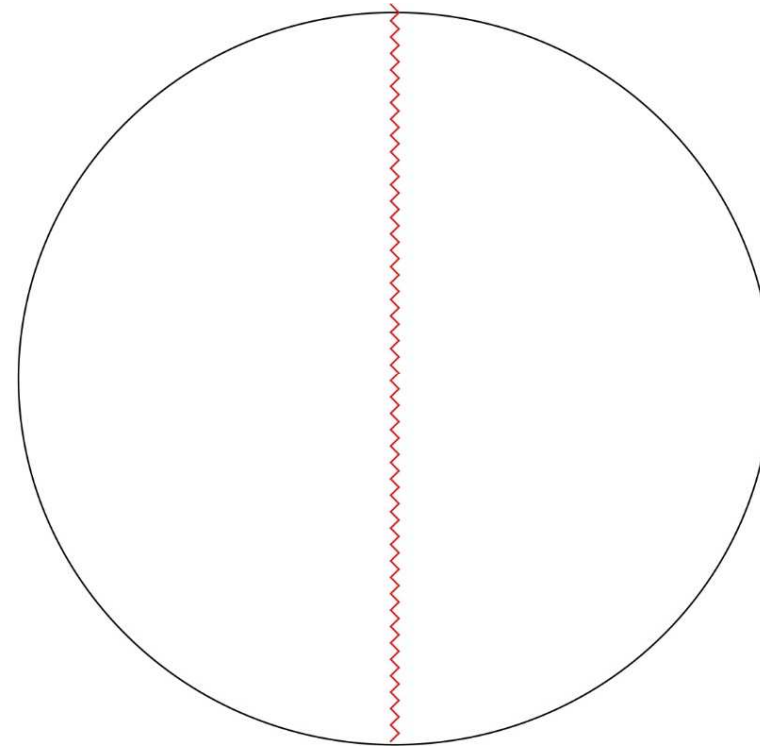
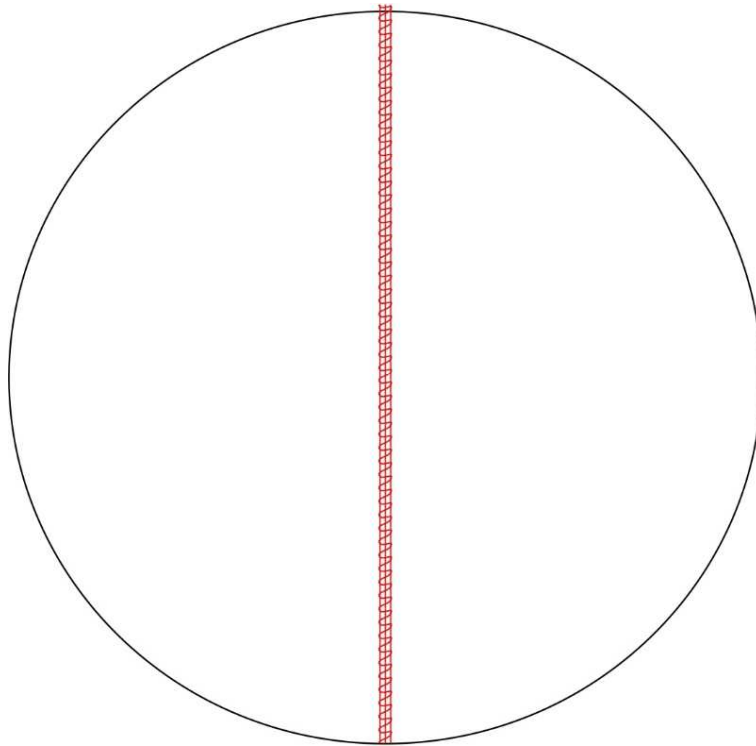


- For the seams set straight stitch, setting 2.5 - 3
- For topstitching edges, such as the hood, use a setting of 4.



- Iron seams flat





- We sewed this shirt completely with the Overlock/Cover



Here we go:

Cut out the paper pattern, place on fabric and cut to size. Then transfer the markings/register marks to the pattern pieces.

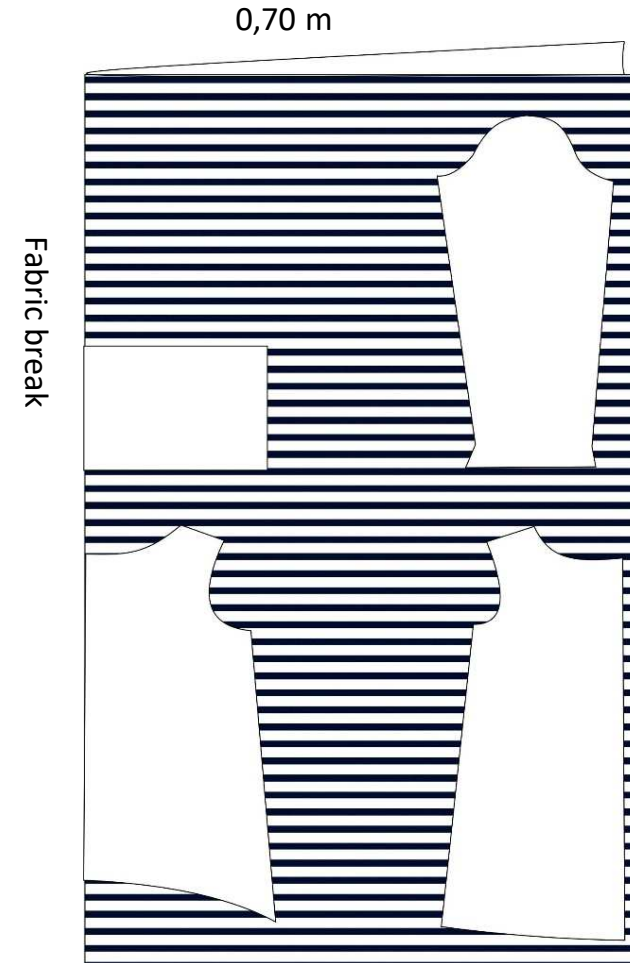
The black dots on the pattern are the marks that you should transfer to the fabric. Either mark the yoke points with chalk or cut small triangles in the hem allowance.

For fabrics that are the same on the left and right sides, or that are one colour, mark the left side with a chalk line. Overlock or zigzag all the pieces, except if the fabric does not fray, for example, jersey.

Cutted parts:



Cutting plan:





- Place the front and back pieces right sides together
- Close the shoulder seams on both sides



Iron the sleeve hem to the wrong side

There are now 2 possibilities:

You sew the hem now, as long as the sleeve is not sewn in, this method is particularly suitable if you are sewing with the cover.

Or you sew the sleeves in first, close the side seams and then sew the hem around. Both methods are fine, choose the one that suits you best.

