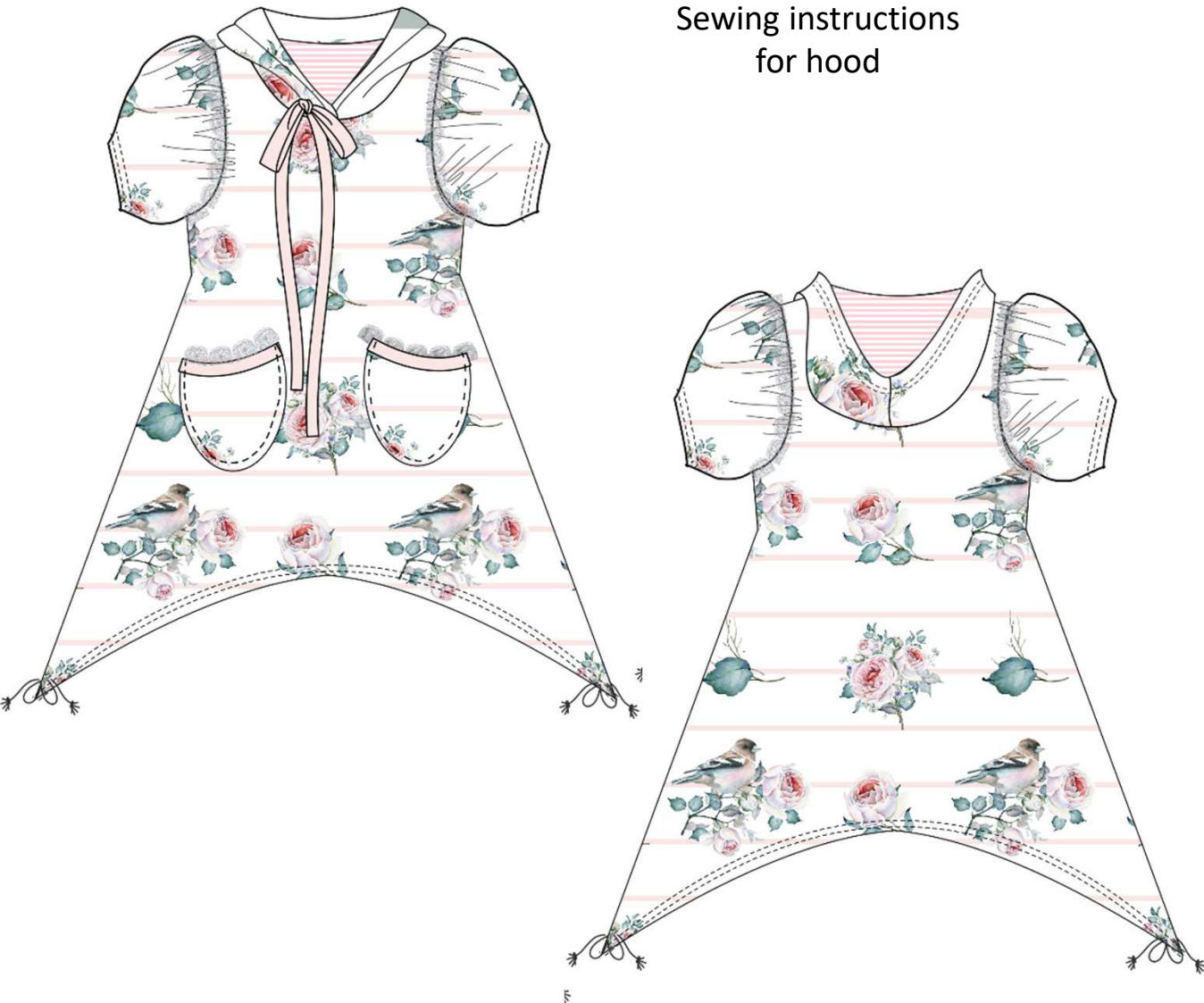


Sewing instructions
for hood



Dress / Shirt Elisa

www.toscaminni.de
Designerin: Silvia Maria P. Vogt

- Body variations: Dress / shirt with and without dividing seam
- 3 sleeve variations
- 4 top pockets
- Hood
- Round neckline with cuffs

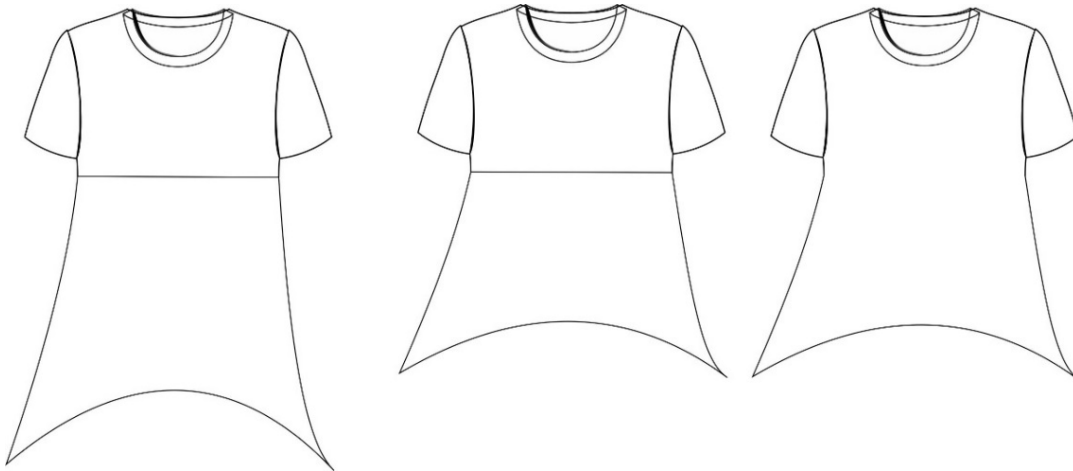
Art.-Nr: 2-K-9

Size: 86-140

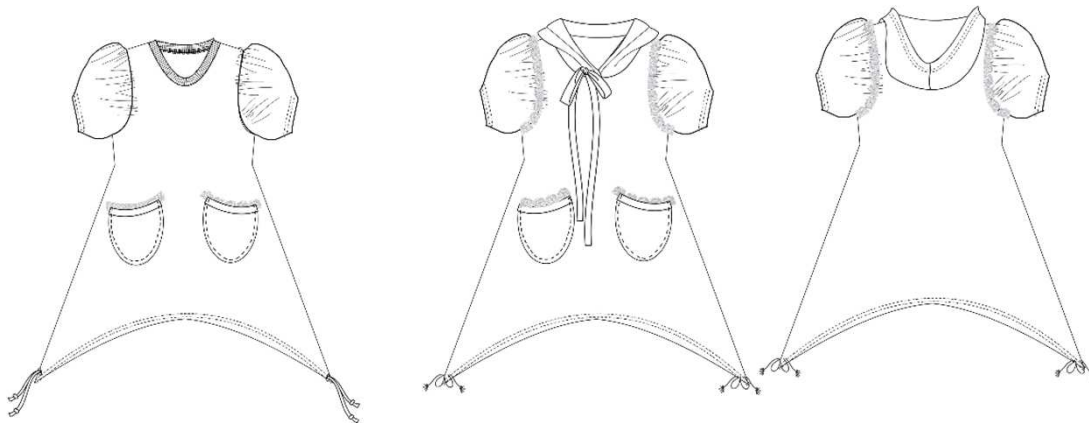
Level of Difficulty:



Sectional drawing



Example with puffed sleeves, hood or cuffs and patch pockets



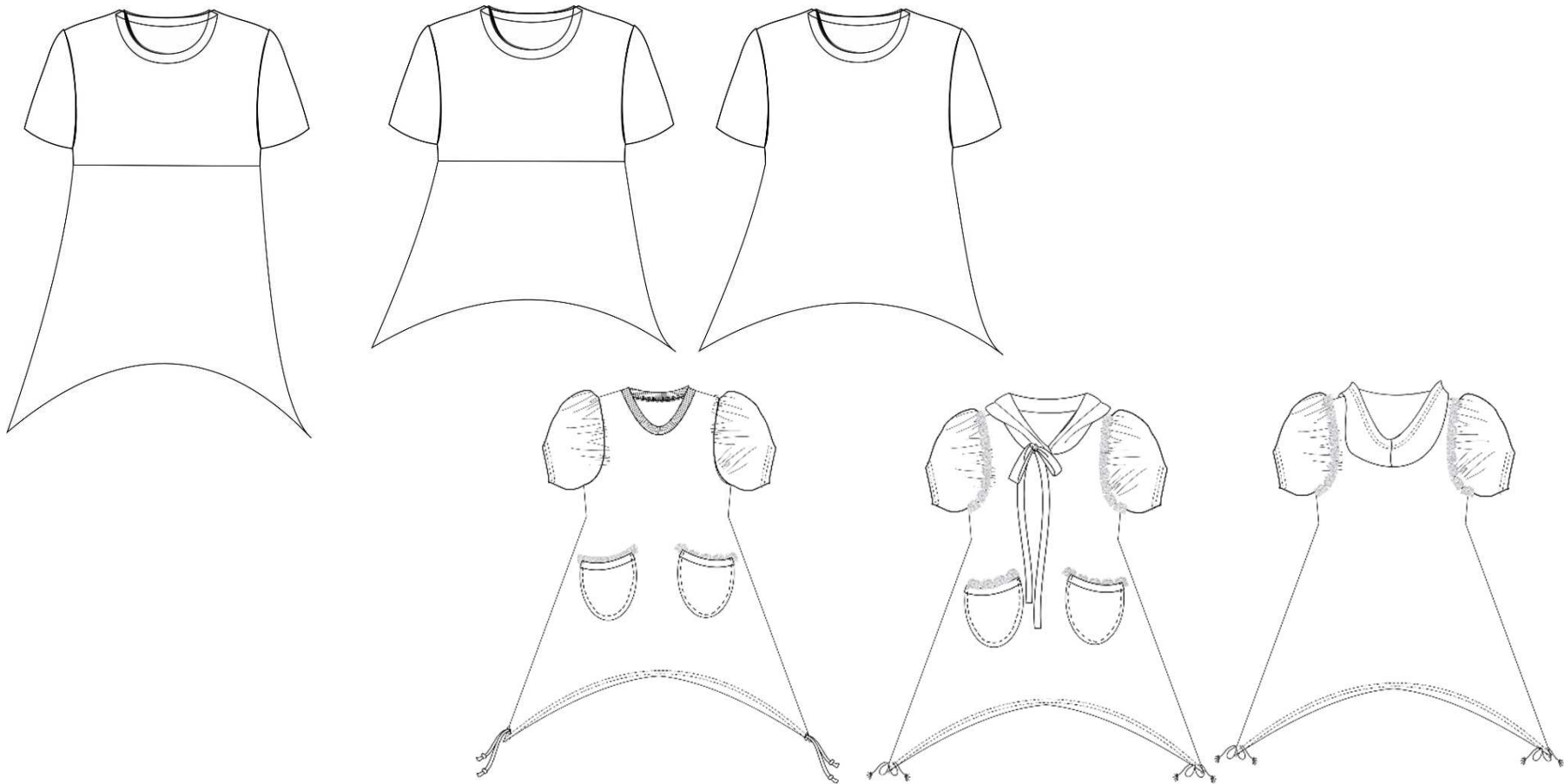
Shoppinglist Shirt/Dress Elisa

Material

- Jersey
- Optional: Cuff fabric for neck cuffs approx. 35/15cm or alternatively hood, fabric consumption as follows:

Stoffverbrauch – Stoffbreite 1,40m

Size	Shirt	Hood Outer fabric/lining 2x each
86/92	0,70m	1 Hood outer fabric 2x 30/30cm 1 Hood lining fabric 2x 30/30cm
98/104	0,70m	1 Hood outer fabric 2x 35/35cm 1 Hood lining fabric 2x 35/35cm
110/116	0,80m	1 Hood outer fabric 2x 35/35cm 1 Hood lining fabric 2x 35/35cm
122/128	1,00m	1 Hood outer fabric 2x 40/40cm 1 Hood lining fabric 2x 40/40cm
134/140	1,10m	1 Hood outer fabric 2x 40/40cm 1 Hood lining fabric 2x 40/40cm



You can sew the pattern as a shirt or as a dress and with or without yoke.

You can combine different sleeve variations and pockets.
The individual add-ons each include a short sewing instruction for the respective sleeve / pocket.

Measurement table babies and girls

Size	68	74	80	86	92	98	104	110	116	122	128	134	140	146	152	158	164	170
1 Bust size	48	50	50,5	54	55	56	57	58	60	62	64	66	69	72	75	78	82	86
2 Waist size	47	48	51	50	51	52	53	54	55	56	57	58	60	62	64	65,5	67	73
3 Hip size	48	50	56	53	55	57	59	61	63	66	69	72	75	78,5	82	85,5	89	92,5
4 Back length	18,1	19,4	20,7	22	23,2	24,4	25,6	26,8	28	29,2	30,4	31,6	32,8	34,5	36,2	37,9	39,6	41,3
5 Arm length	21	23,5	26	28,3	30,6	32,9	35,2	37,5	39,8	42,3	44,8	47,3	49,8	52	54,2	56,4	58,6	60,8
6 Side trouser length	35	39	43	48,6	53	57,4	61,8	66,2	70,6	75,3	80	84,7	89,4	93,2	97	100,8	104,6	108,4
7 Shoulder width	6,2	6,6	7	7,1	7,4	7,7	8	8,3	8,6	8,9	9,2	9,5	9,8	10,2	10,6	11	11,4	11,8



This is how the length is measured:

Determine the size of the child or the height of the body:
Place your child slightly leaning against a wall. Place a book on the head and mark the height on the wall.
You can use the mark to measure and you will know how tall your child is.

Bust size:

Put a tape measure around your child's chest, it goes over the chest and shoulder blade.

Waist measurement:

Put a tape measure around the waist

Hip size:

Place the tape measure around the widest part of the hips.

Side trouser length:

Measure the length from the waist to the bottom of the foot

Shoulder width:

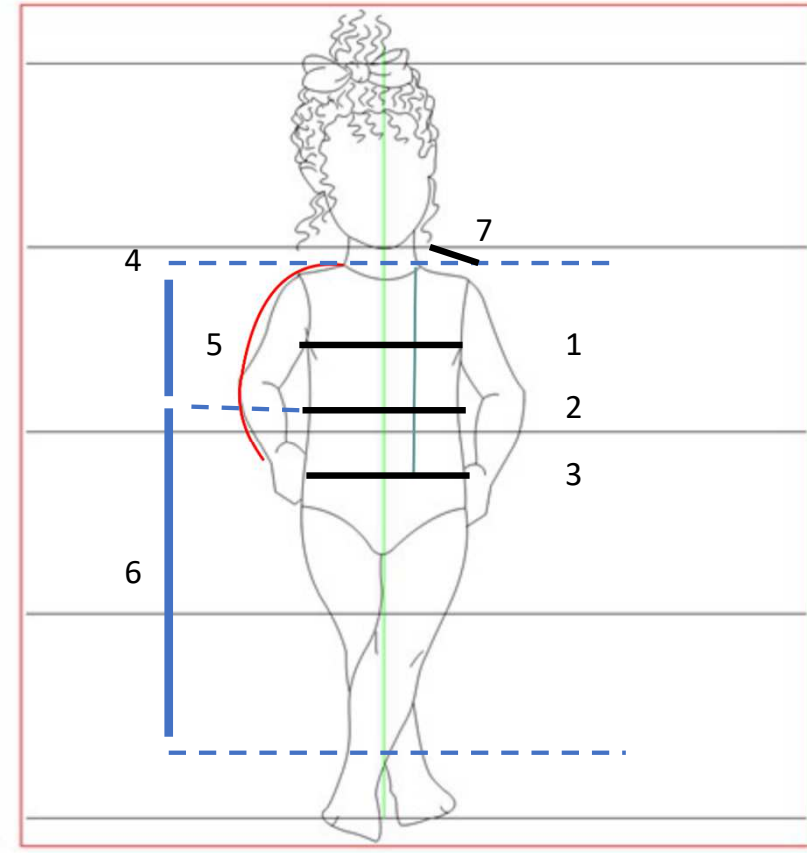
You measure from the base of the neck to the shoulder point

Sleeve length:

You measure with slightly angled arm from the shoulder point with set-in sleeves height of the arm ball.
For raglan sleeves from the neck

Back length:

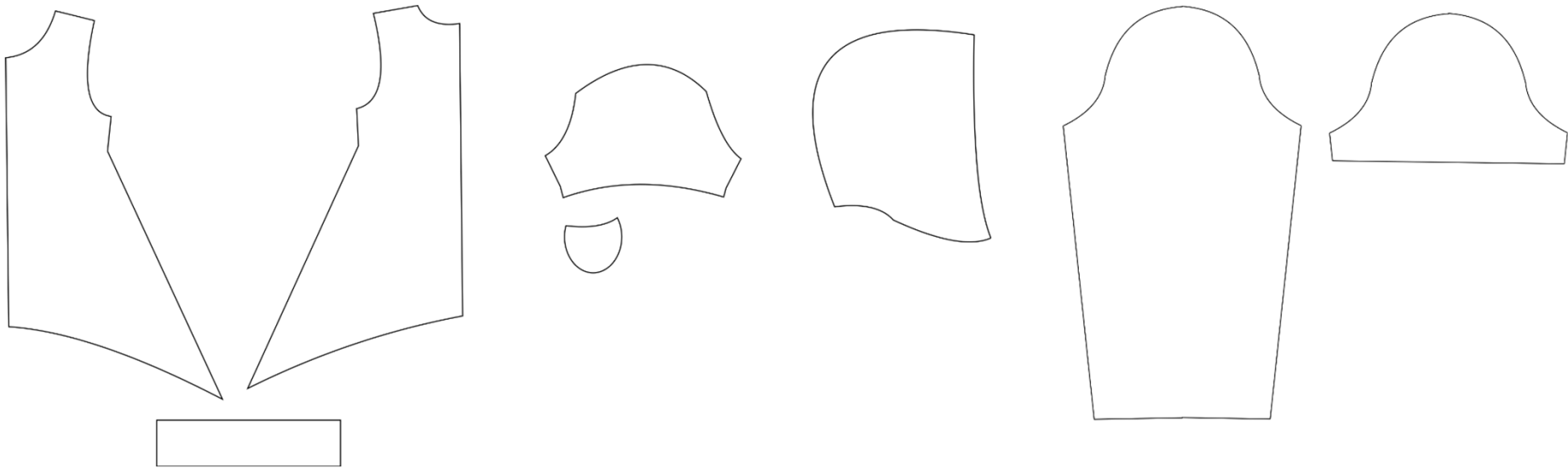
Measured from the first cervical vertebra to the waist.



You have now taken your measurements, compared them to the pattern and realised that you need to adjust the pattern.

On the following pages you can see how you can change the length of your cut.

Technical Drawing:



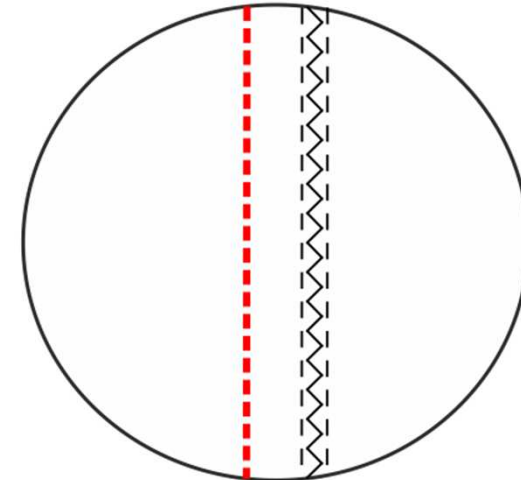
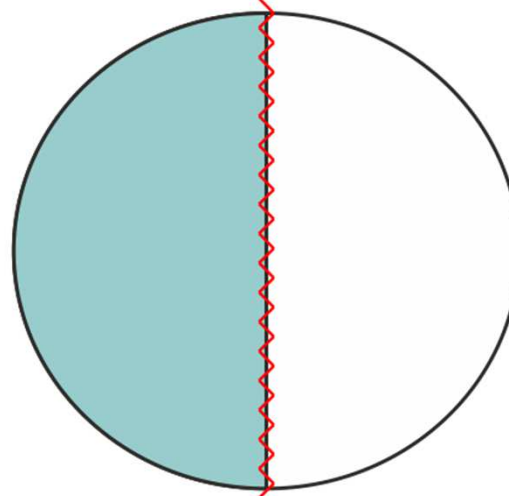
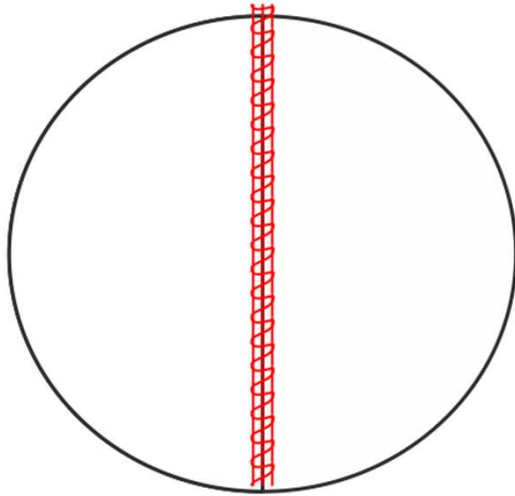
There are a total of 3 sleeves and 4 patch pockets to choose from - short instructions for each sleeve or patch pocket are included in the add-on.

You can exchange the parts as you like.

You can also choose between a cuffed neckline or hood.



Jersey seams



- The easiest processing method works with an overlock, of course.
- Tip: we work with a Babylock and can highly recommend this brand.

- If you are sewing with a sewing machine, we recommend that you first sew the seams with a small backstitch (length 2-2.5) and then finish both layers with an overlock stitch.
- Tip: We sew with a Juki industrial machine and achieve very beautiful results that are in no way inferior to overlock sewing.



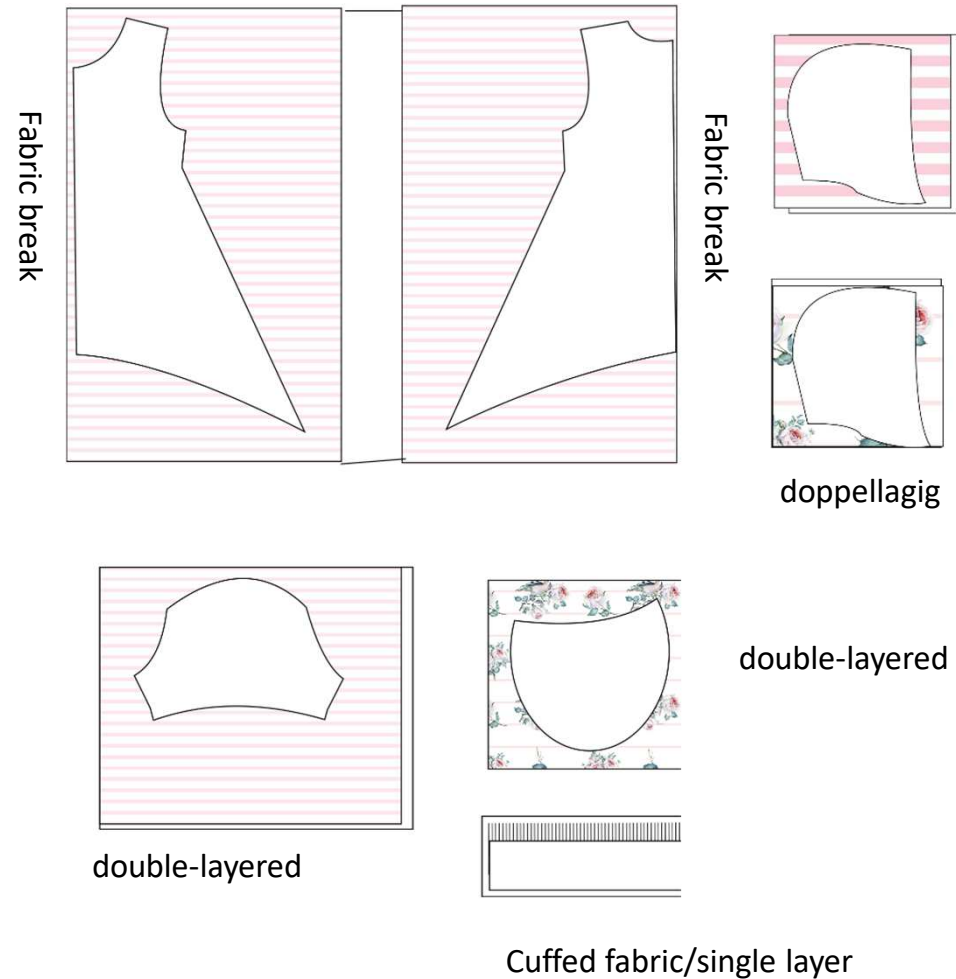
Here we go:

Cut out the paper pattern, place on fabric and cut to size. Then transfer the markings/register marks to the pattern pieces.

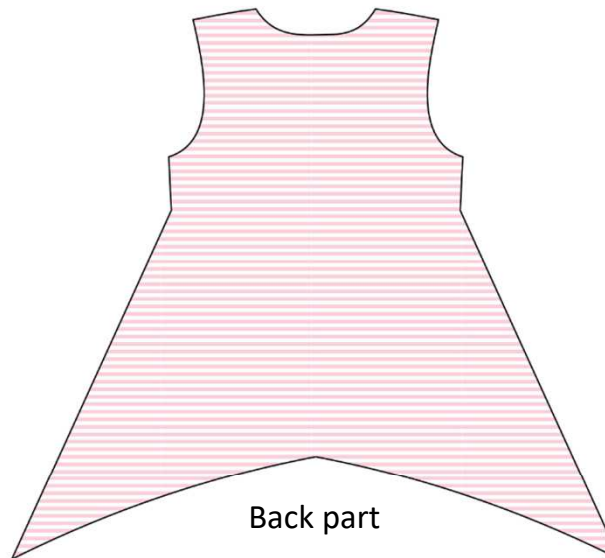
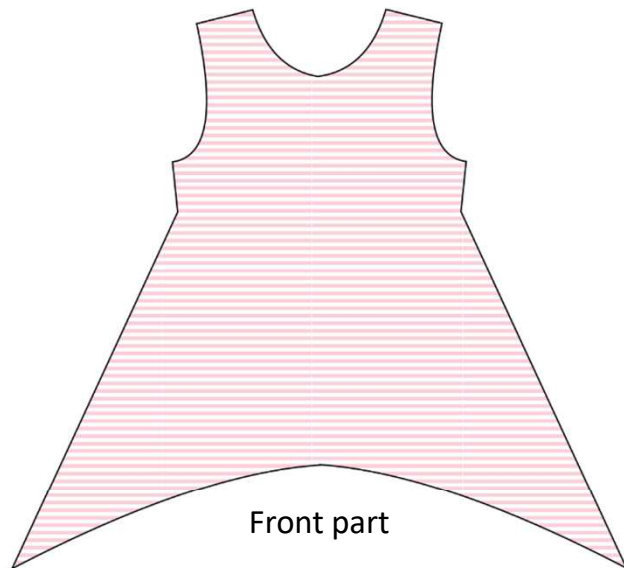
The black dots on the pattern are the marks that you should transfer to the fabric. Either mark the yoke points with chalk or cut small triangles in the hem allowance.

For fabrics that are the same on the left and right sides or are one colour, mark the left side with a chalk line. Overlock or zigzag all pieces unless the fabric does not fray, e.g. whale or jersey.

Cutting plan:



Cutted Parts



Note:

If you have chosen the version with the dividing seam, first sew the upper part and the lower part together.

Sleeves

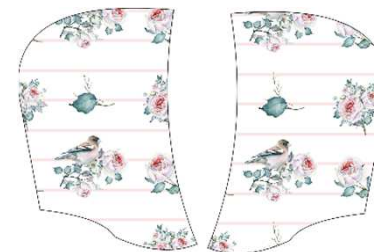


Note:

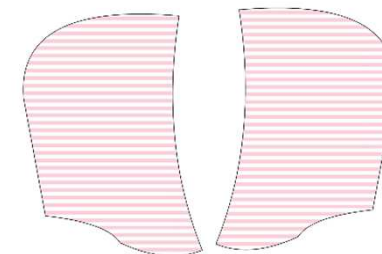
You can change the sleeves/pockets as you like.



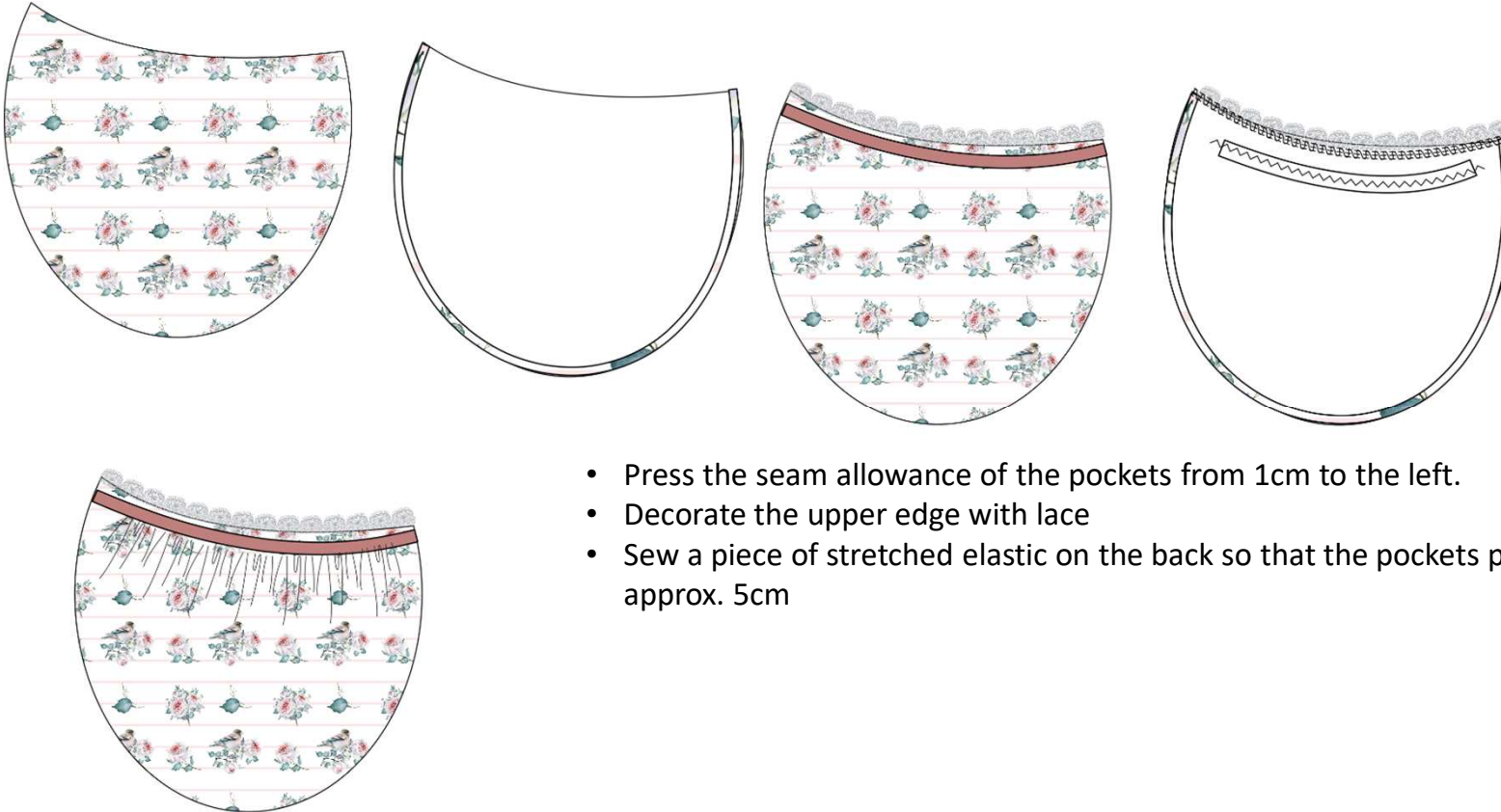
Bags



Hood



Bags



- Press the seam allowance of the pockets from 1cm to the left.
- Decorate the upper edge with lace
- Sew a piece of stretched elastic on the back so that the pockets pull together by approx. 5cm