

TOSCAminni
Schnittmanufaktur



Godet-Jacket Cilli

www.toscaminni.de
Designerin: Silvia Maria P. Vogt

Art.-Nr: 4-E-10

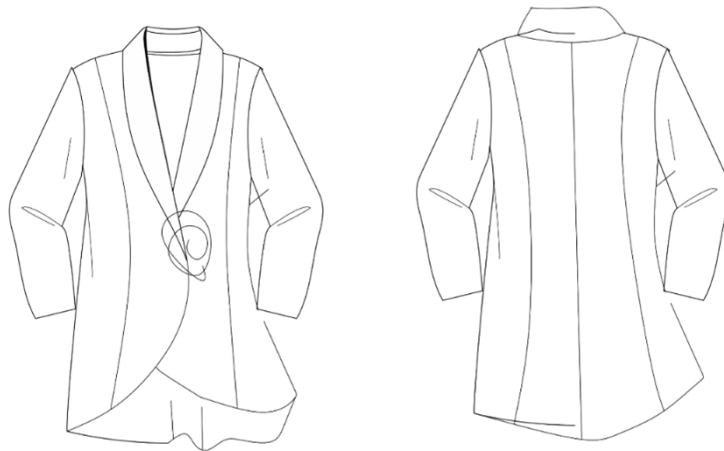
Size: 34-52

Difficulty Level:



TOSCAminni

Schnittmanufaktur



Shopping List Jacked Cilli

Material

- Walk
- Boiled wool
- Fleece
- Knitted fabrics

Fabric consumption – fabric width 1.40m

Size: 34/36	2,00m
Size : 38	2,05m
Size : 40-44	2,10m
Size : 46-48	2,50m
Size: 52-54	3,30m

www.toscaminni.de
Designerin: Silvia Maria P. Vogt

TOSCAminni
Schnittmanufaktur

Nähanleitung • Schnittmuster



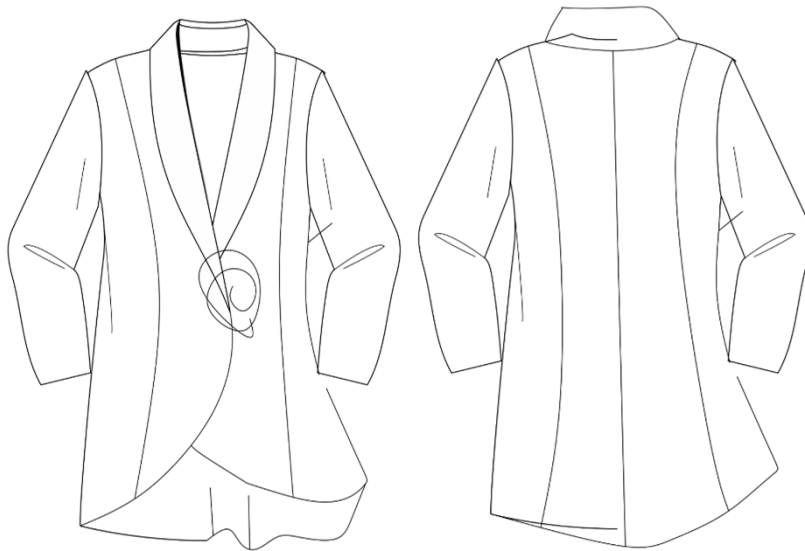
www.toscaminni.de
Designerin: Silvia Maria P. Vogt

Measurement table

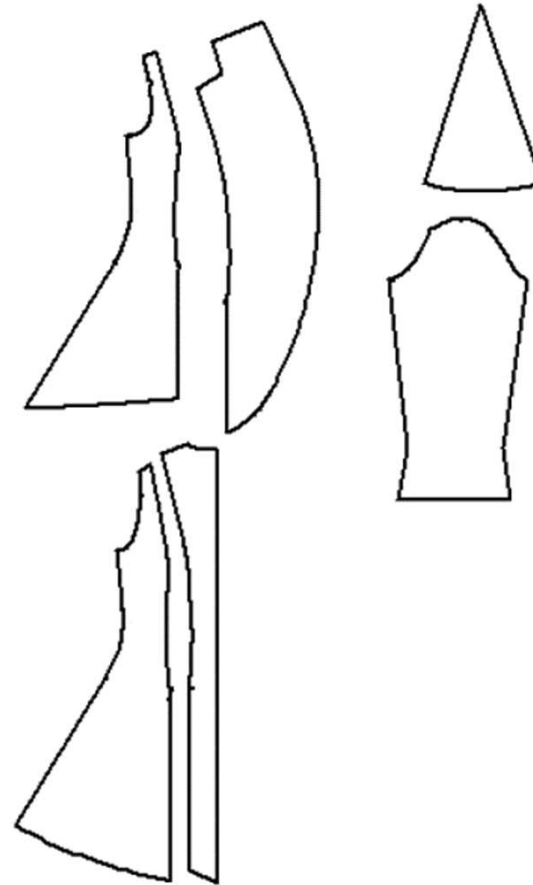
	Size	34	36	38	40	42	44	46	48	50	52
1	Upper bust	80	84	88	92	96	100	104	110	116	122
3	Hip size	86	90	94	98	102	106	110	116	122	128
4	Waist size	62	66	70	74	78	82	86	92	98	104
	Shoulder width	12	12	12	13	13	13	13	14	14	14
5	Sleeve length	59	59	60	60	61	61	61	61	62	62

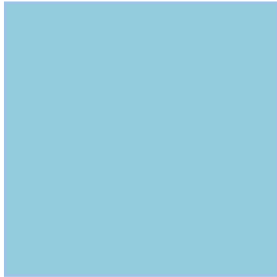


Sectional drawing

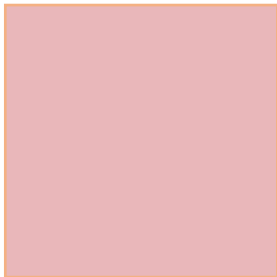


Technical Drawing:

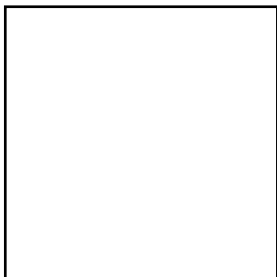




Outer fabrics are blue



Lining fabrics pink



The back is white

Material

- Walk
- Boiled wool
- Fleece
- Knitted fabrics

Fabric consumption

Size	34/36	38	40/42/44	46/48	52/54
Fabric width 1,40m	2,00m	2,05m	2,10m	2,50m	3,30m

Cutting Plan

Part to cut	Outer fabric	Knitted fabric (optional)**
Centre front	2 x	2x
Side front part	2 x	
Medium back	2 x	
Side back part	2 x	
Sleeves	2 x	
Godet	2 x	

**The knitted fabric is intended for the blue version and optionally used as a contrast. You can also use faux fur or similar here.

Note:

The seam allowance is indicated on the pattern
We recommend 1 cm

Here we go:

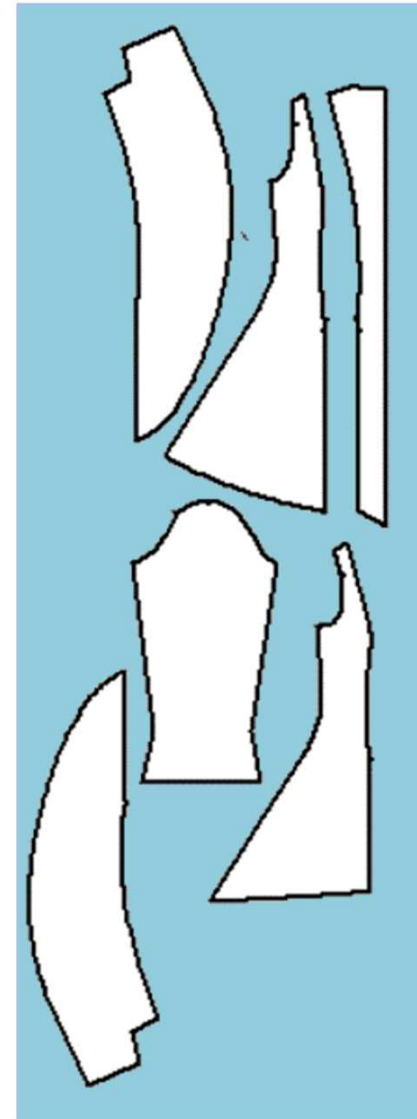
Cut out the paper pattern, place on fabric and cut to size. Then transfer the markings/register marks to the pattern pieces.

The black dots on the pattern are the marks that you should transfer to the fabric. Either mark the yoke points with chalk or cut small triangles in the hem allowance.

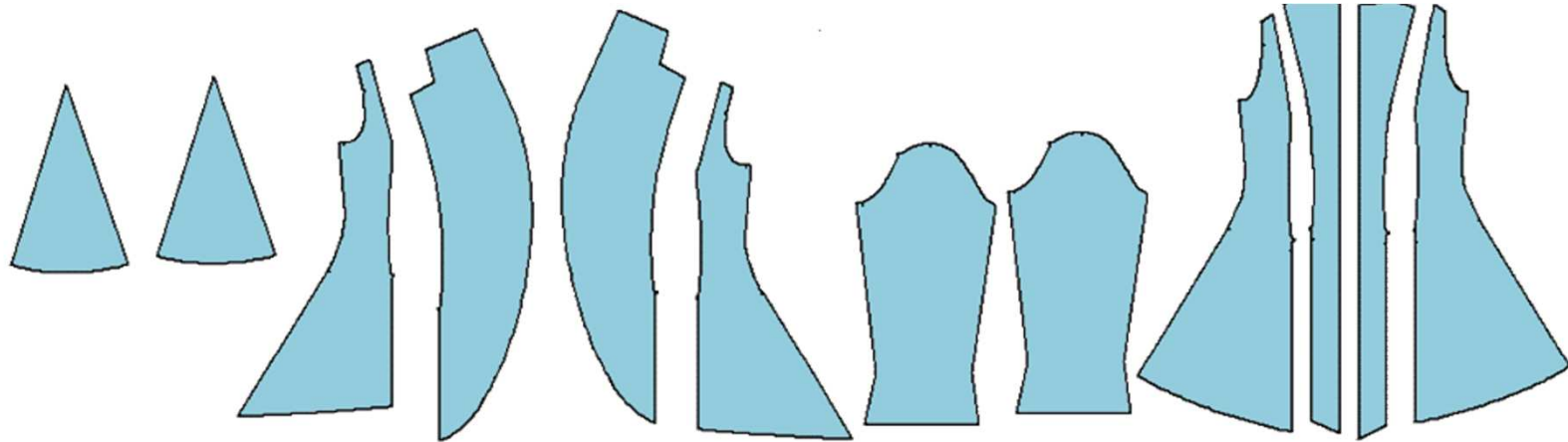
For fabrics that are the same on the left and right side, or that are one colour, mark the left side with a chalk line.

Overlock or zigzag all pieces unless the fabric does not fray, e.g. whale or jersey.

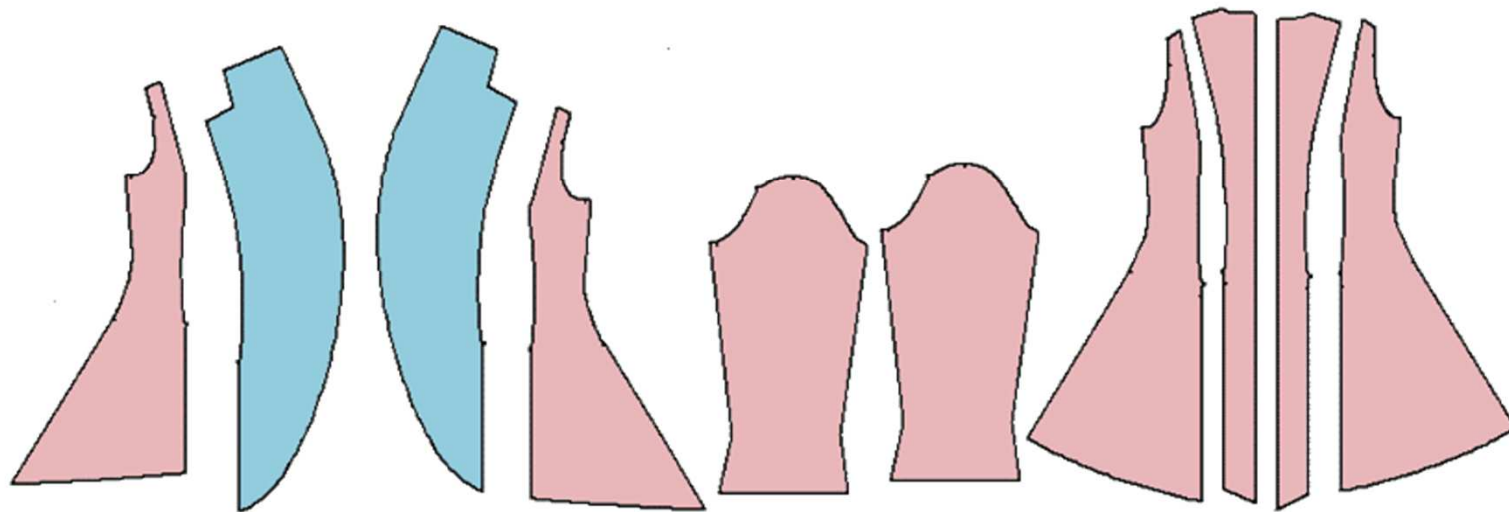
Zuschneideplan



Cutted Parts:

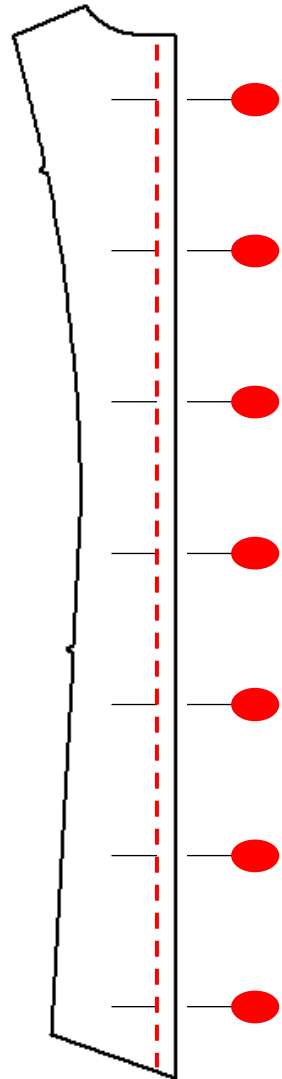


Inner lining



Nähanleitung • Schnittmuster

We start with the back



Sew centre back seam (place fabric right sides together)

Sewing the back side pieces to the centre back piece

