



SEWING INSTRUCTIONS INSTRUCCIONES DE COSTURA

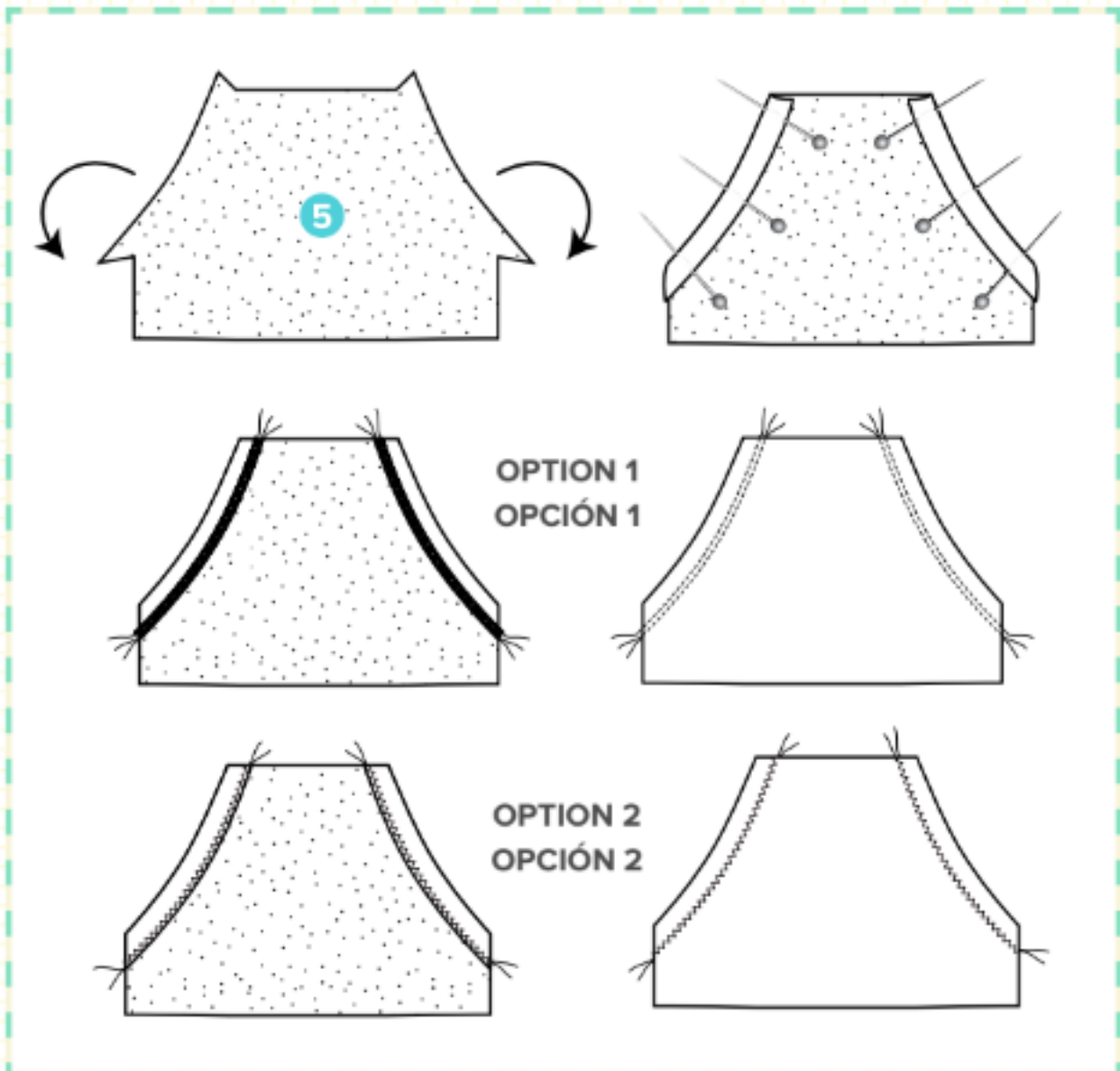
WILMA HOODIE VIEW A WILMA HOODIE (SUDADERA) VISTA A

STEP 1:

Press the Pocket (5) openings 1/2" (12mm) from the edge. Sew.

PASO 1:

Plancha las aberturas del Bolsillo (5) a 1/2" (12 mm) del borde. Cose.





Right Side
Derecho



Wrong Side
Revés

Fabric
Teja

★ **Note:** Seam allowances are 1/4" (6 mm), and 1/2" (12 mm) are included.

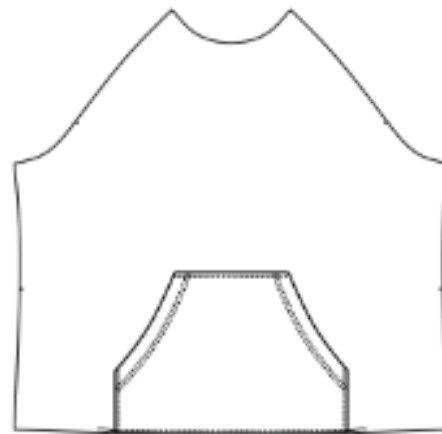
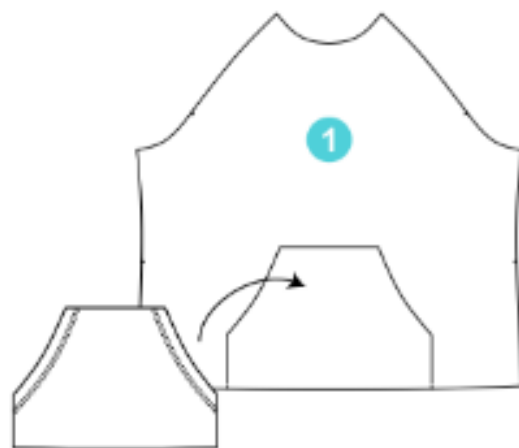
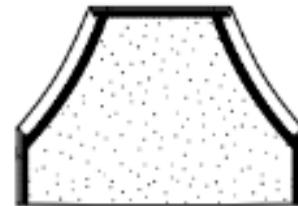
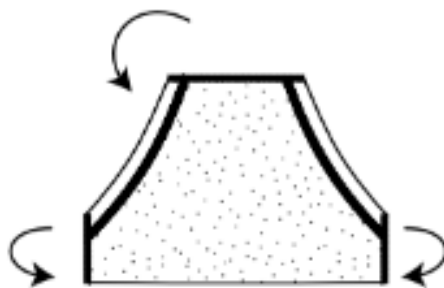
★ **Nota:** Los márgenes de costura incluidos son de 1/4" (6 mm) y 1/2" (12 mm).

STEP 2:

Press the sides and top of the Pocket 1/2" (12 mm). Place the Pocket on the RIGHT SIDE of the Front (1). Sew on the sides and topstitch 1/16" (1.5mm) from the edge.

PASO 2:

Plancha los costados y la parte superior del Bolsillo a 1/2" (12 mm). Colócalo en el DERECHO del Frente (1). Cose en los lados y la parte superior a 1/16" (1.5 mm).



STEP 3:

Pin front of Sleeve (3) to Hoodie Front (1) and back of Sleeve to Hoodie Back, RIGHT sides together. Sew. Open the hoodie.

PASO 3:

Fija con alfileres el frente de la Manga (3) con Frente de la Sudadera (1) y la espalda de la Manga con la Espalda de la sudadera, en ambos lados DERECHO con DERECHO. Cose. Abre.

