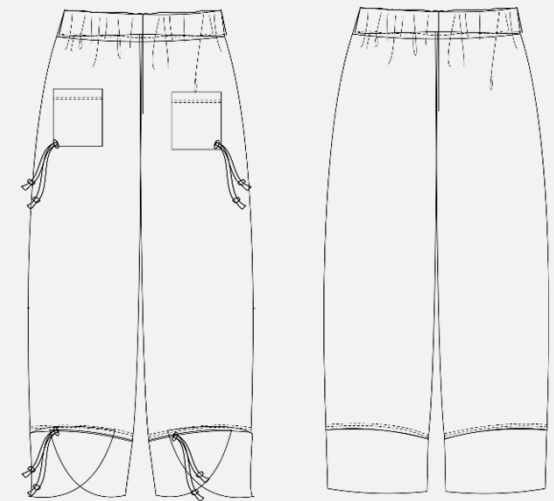
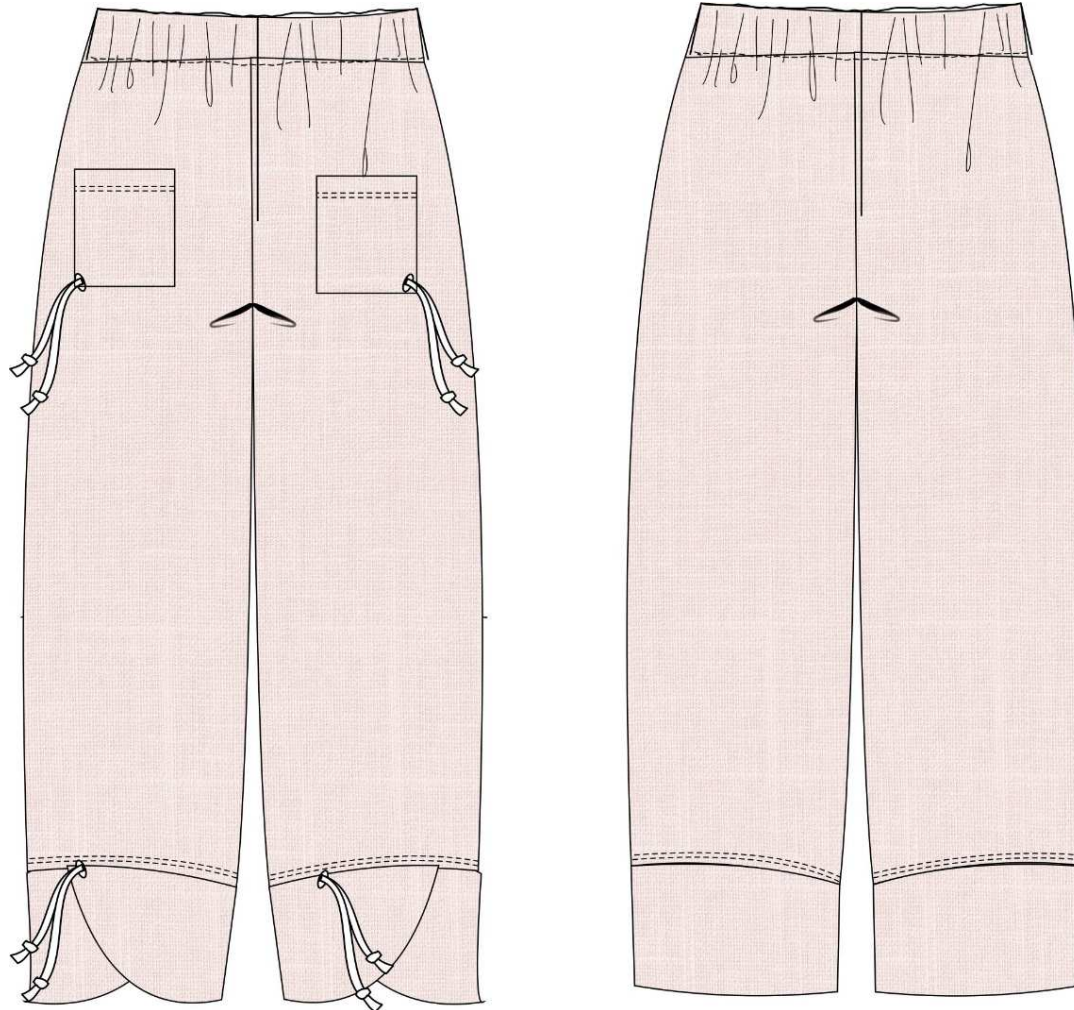


Nähanleitung • Schnittmuster

Pants Fleur #pantsfleur



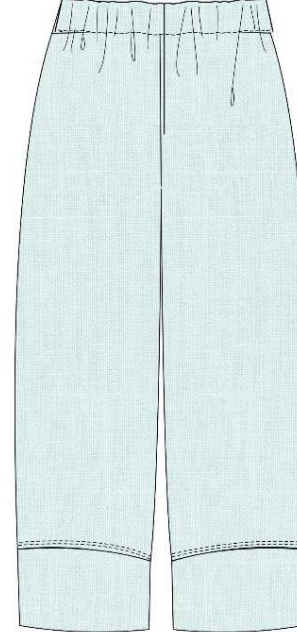
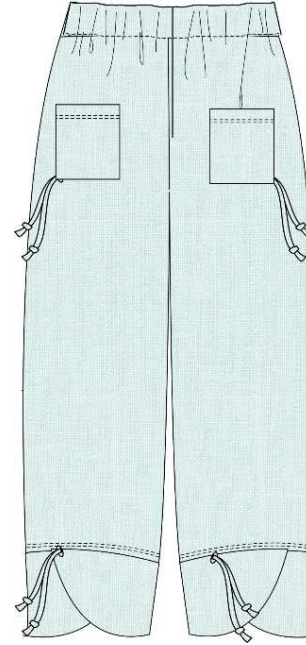
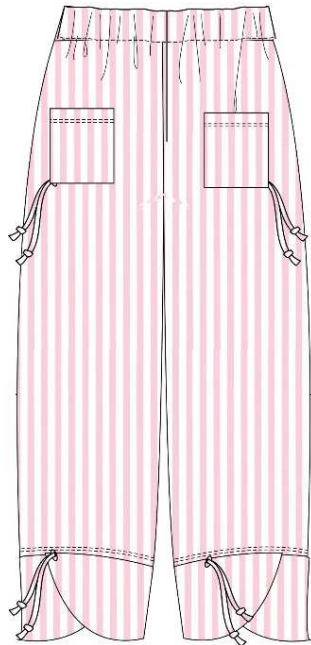
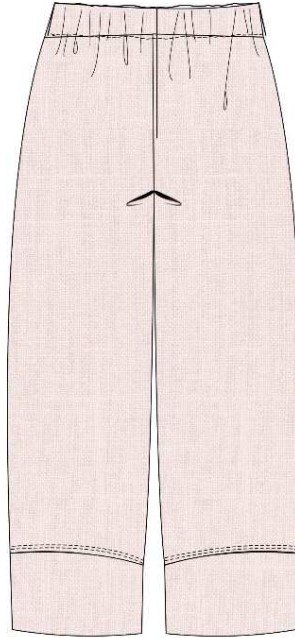
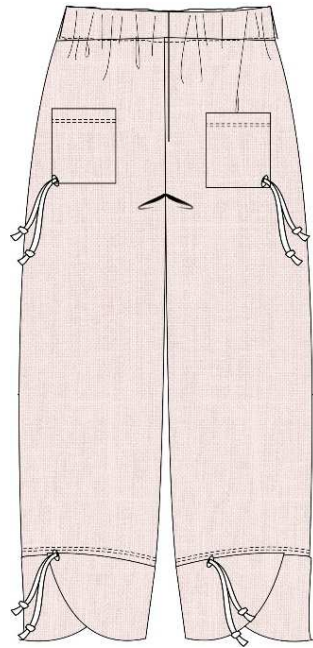
Art.-Nr: 5-E-8

Size: 34-46

Level of difficulty:



Nähanleitung • Schnittmuster



Licence to use patterns and embroidery files

You will receive a usage licence for each purchased product (pattern / embroidery file / ebook).

Commercial use

All self-made products from our patterns/embroidery files/e-books may be sold on a small scale (50 pieces). However, we insist that we are named as the manufacturer of the pattern/embroidery file/e-book with our name "TOSCAminni Schnittmanufaktur" as well as our internet address: www.toscaminni.de.

The customer may only edit and use the contents beyond the scope stated with the consent of the respective rights holder. If you have any questions, please contact us at info@toscaminni.de.

Copyright

All products from our online shop have been designed and created by us. Our patterns / embroidery file / ebook are protected by copyright and may not be sold, given away, copied or altered. We own the sole copyright unless it is expressly stated.

Print out the cut and glue it together:

You print custom or actual size. We have included an extra PDF file with the test square for your reference, so you can avoid misprints. We have drawn lines around the sheets and added row/ and page numbers. Either trim the page edges or glue them together overlapping.

Tip: Trim the edges so that there is a margin left on the right to stick together. The sheets are then approx. 0.5 cm above each other and it is easier to glue them together. Translated with www.DeepL.com/Translator (free version)



Measurement table

	Size	34	36	38	40	42	44	46	48	50	52
1	Upper bust	80	84	88	92	96	100	104	110	116	122
3	Hip size	86	90	94	98	102	106	110	116	122	128
4	Waist size	62	66	70	74	78	82	86	92	98	104
	Shoulder width	12	12	12	13	13	13	13	14	14	14
5	Sleeve length	59	59	60	60	61	61	61	61	62	62



Zuschneideplan



Oberstoff	Zuschnitt	Einlage
Front	2x	
Back	2x	
aperture	2x	
Pocket	2x	2x
According to taste ribbon	4x	

Hint:

See pattern for seam allowance



Outer fabrics are blue



The back is white

Work that is always the same:

Important: Before cutting the fabric, always measure exactly.

Decisive are the

Bust size

Waist size

Hip size



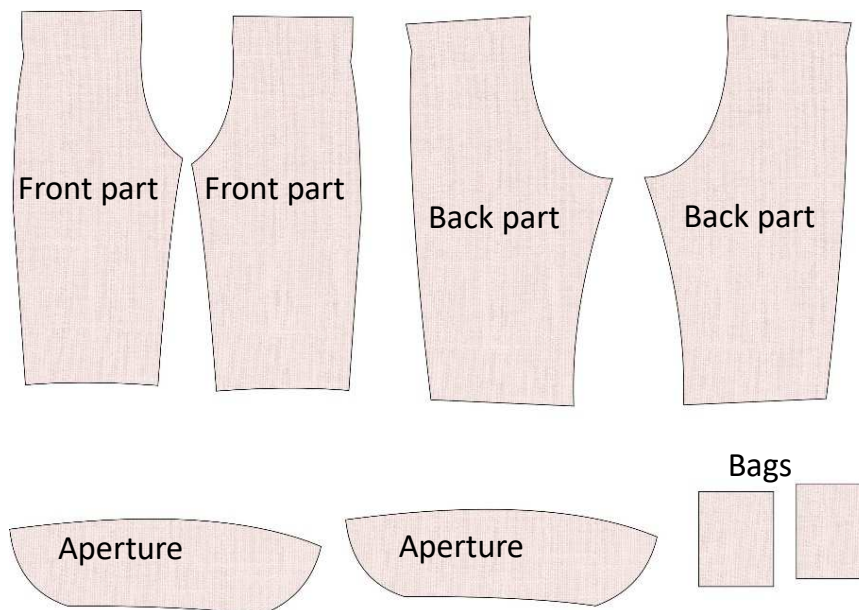
Let's go:

Cut out the paper pattern, place on fabric and cut to size. Then transfer the markings/register marks to the pattern pieces.

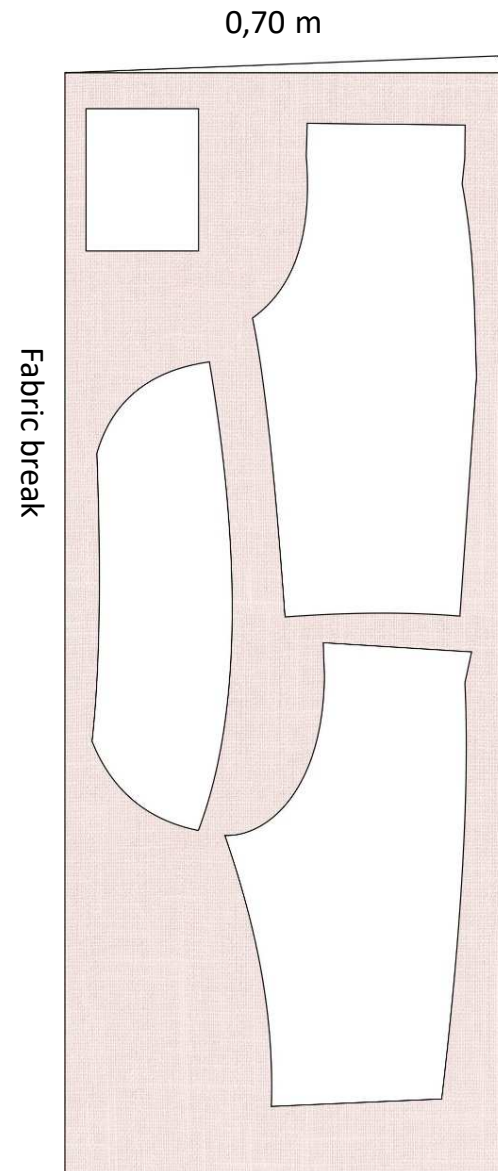
The black dots on the pattern are the marks that you should transfer to the fabric. Either mark the yoke points with chalk or cut small triangles in the hem allowance.

For fabrics that are the same on the left and right sides or are plain, mark the left side with a chalk line. Overlock all pieces unless the fabric does not fray, e.g. whale or jersey, or use a small zigzag stitch.

Cut parts:



Cutting plan

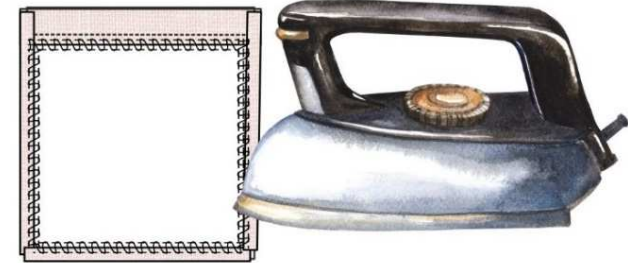
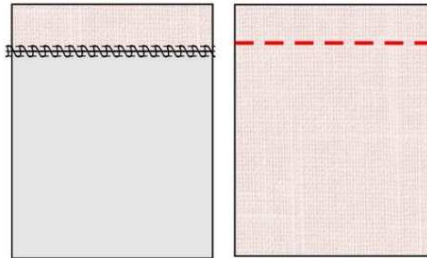
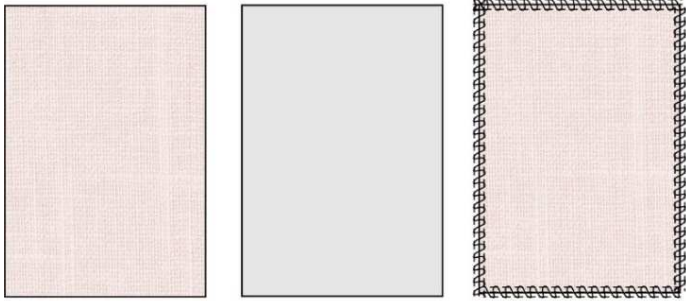




- All parts are serged with the overlock or zigzag stitch/sewing machine.
- After serging, iron the overlock or zigzag seams.

This has the advantage that the seams do not show through to the right side when ironing out the seams.

Nähanleitung • Schnittmuster



- Reinforce the pockets with interfacing
- Serging
- Press the 2cm turnaround to the left.
- Topstitch from right side with a size 4 stitch.
- Turn pocket inside out, press 1cm seam allowance to the left.
- Pin the pocket to the trouser front.
- sew on

