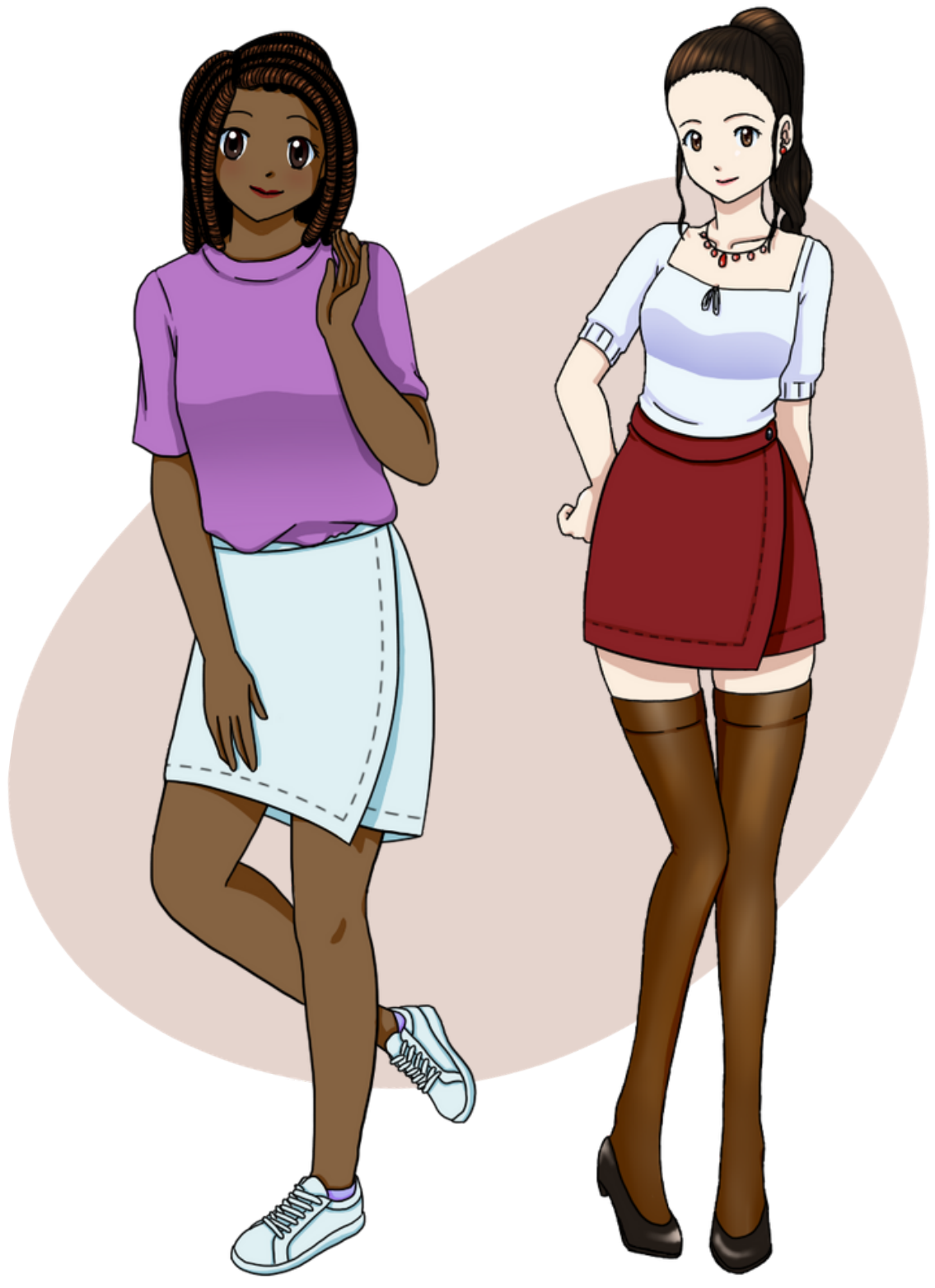


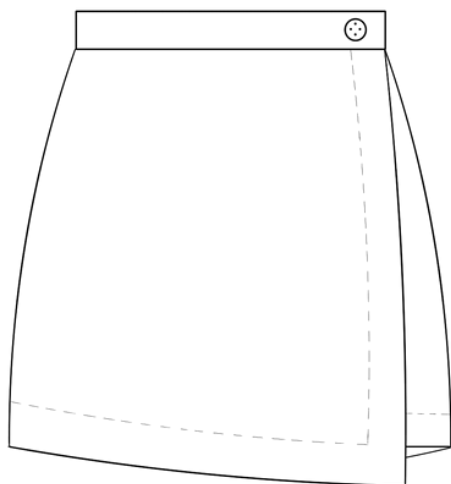


# MELANIE WRAP SKIRT

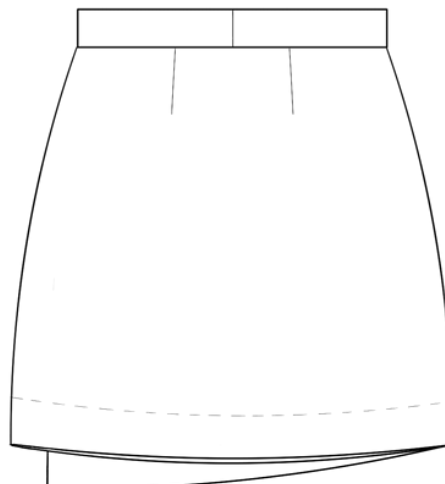


# DETAILS & REQUIRED MATERIALS

## FRONT



## BACK



## DESCRIPTION & FIT

The Melanie Wrap Skirt is a semi-fitted asymmetrical mini wrap skirt. The skirt is designed with a front overlap that is 1.5" longer than the underlap. It is fastened with 2 buttons - 1 at the left front waist and 1 inside of the front waistband for added security.

This skirt is meant to be fitted at the waist with a 2.5" ease at the hip.

## MATERIALS

**Recommended fabrics:** Medium to heavy weight fabric such as Tencel, corduroy, canvas, denim, and twill. This pattern is designed for woven fabrics with no stretch, but woven fabrics with minimal stretch are also acceptable.

### You will also need:

- 1/2 yard lightweight fusible interfacing
- 2 1" buttons
- Coordinating thread
- Sewing Machine
- Iron

# SIZE CHART & FABRIC USAGE

## SIZE CHART (INCHES)

	4	6	8	10	12	14	16	18
BUST	32	34	36	38	40	42	44	46
WAIST	26	28	30	32	34	36	38	40
HIP	34	36	38	40	42	44	46	48

## FINISHED GARMENT MEASUREMENTS (INCHES)

	4	6	8	10	12	14	16	18
WAIST	26	28	30	32	34	36	38	40
HIP	36 1/2	38 1/2	40 1/2	42 1/2	44 1/2	46 1/2	48 1/2	50 1/2
SKIRT LENGTH	16 3/4	16 7/8	17	17 1/8	17 1/4	17 3/8	17 1/2	17 5/8
SWEEP (W/O WRAP)	40 1/2	42 1/2	44 1/2	46 1/2	48 1/2	50 1/2	52 1/2	54 1/2
SWEEP (W/ WRAP)	53 1/4	55 1/4	57 1/4	59 1/2	61 1/4	63 1/4	65 1/4	67 1/4
SKIRT BAND WIDTH	1 1/2 (all sizes)							

## FABRIC USAGE (YARDS)

	4	6	8	10	12	14	16	18
MAIN FABRIC (45 IN)	1 5/8				1 3/4			2 1/4
MAIN FABRIC (54 IN)	1 1/8						1 1/2	
INTER-FACING	1/2							

# HOME PRINT TILE LAYOUT

