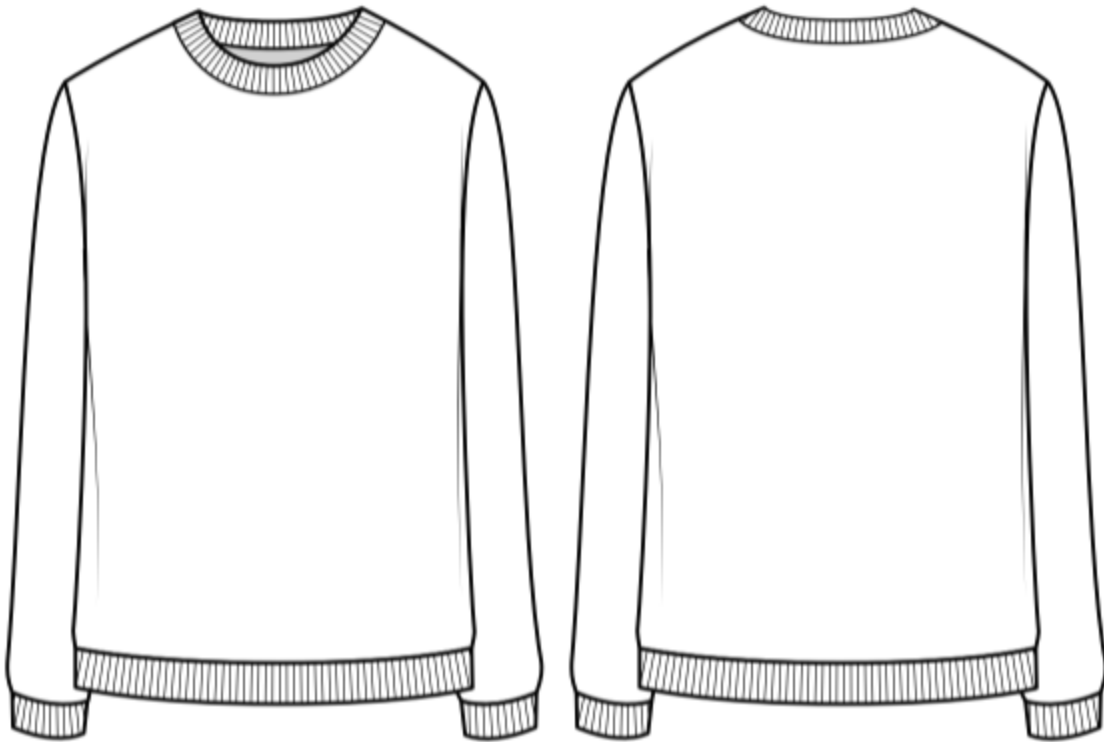


The Bowery

Style Overview



FRONT

BACK

The Bowery is a semi-fitted sweatshirt with an inset sleeve and crew neckline. Sleeve cuffs and a waistband finish the sweatshirt with ease.

Perfect for anytime.

The Bowery

Materials & Measurements

MATERIALS LIST (YARDS):

	16	18	20	22	24	26	28	30
45"	3	3	3	3	3	3	3	3
60"	1.75	1.75	1.75	2.5	2.5	2.5	2.5	2.5

Trims/Notions:

1/2" fusible stay tape

RECOMMENDED FABRICS

- French terry
- Performance fleece
- Fleece-backed stretched cotton
- Stretch knit fleece
- Double knit
- Scuba knit
- Velour
- Stretch velvet
- Woven with knit trim

BODY MEASUREMENTS (INCHES):

	16	18	20	22	24	26	28	30
BUST	42	44	46	48	50	52	54	56
WAIST	36	38	40	42	44	46	48	50
HIP	45	47	49	51	53	55	57	59

FINISHED GARMENT MEASUREMENTS (INCHES):

	16	18	20	22	24	26	28	30
BODY	48 ^{3/4}	50 ^{3/4}	52 ^{3/4}	54 ^{3/4}	56 ^{3/4}	58 ^{3/4}	60 ^{3/4}	62 ^{3/4}
WAISTBAND	41	43	45	47	49	51	53	55
LENGTH	28 ^{1/8}	28 ^{1/4}	28 ^{1/2}	28 ^{3/4}	29	29 ^{1/8}	29 ^{1/4}	29 ^{1/2}
SLEEVE LENGTH	23 ^{3/4}	23 ^{3/4}	23 ^{3/4}	23 ^{3/4}	23 ^{3/4}	23 ^{3/4}	23 ^{3/4}	23 ^{3/4}
CUFF OPENING	7 ^{3/4}	8	8 ^{1/2}	9	9 ^{3/8}	9 ^{3/4}	10 ^{1/4}	10 ^{1/2}