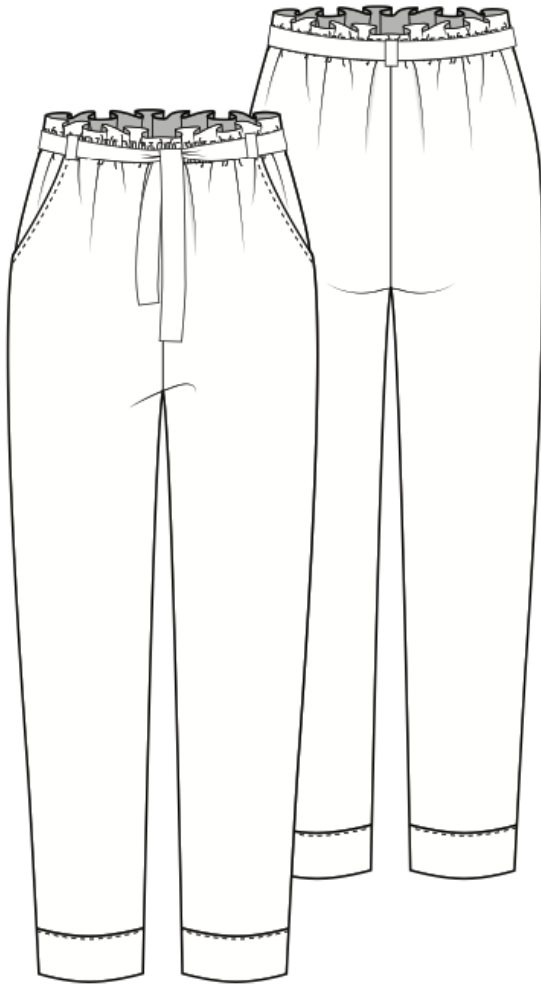


The Thompson

Style Overview



VIEW A



VIEW B

The Thompson Pant is an easy-to-sew pull-on pant with a classic paperbag waist detail. Designed for light to medium weight woven fabrics, the Thompson can be made in 2 lengths - a city short that hits right above the knee and an ankle length with wide cuff detailing. Side pockets make these practical and a tie belt and wide belt loops give a hint of style. Wear the Thompson with the Mercer top tucked in, with a slim tank, or a loose fitting button down untucked.

The Thompson

Materials & Measurements

MATERIAL LIST

View A: (Pant) *yards

	2	4	6	8	10	12	14	16	18	20
40"	3	3	3	3	3	3 1/4	2 1/2	3 1/2	3 1/2	3 1/2
60"	2	2	2	2	2	2 1/4	2 1/2	2 1/2	2 1/2	2 1/2

View B: (Short) *yards

	2	4	6	8	10	12	14	16	18	20
40"	2 1/2	2 1/2	2 1/2	2 1/2	2 1/2	2 3/4	2 3/4	2 3/4	3	3
60"	1 1/2	1 1/2	1 1/2	1 1/2	1 1/2	1 3/4	1 3/4	1 3/4	2	2

Trims/Notions:

(ALL VIEWS)

1 1/2" (38mm) wide elastic - 2 yards

Thread to match

RECOMMENDED FABRICS

Lightweight to medium weight wovens such as: Cotton poplin, Chambray, Silk, Polyester, & blends with tencel.

Allow extra fabric to match plaids or stripes.

MEASUREMENTS

	2	4	6	8	10	12	14	16	18	20
BUST	32	33	34	35	36.5	38	40	42	44	46
WAIST	26	27	28	29	30.5	32	34	36	38	40
HIP	35	36	37	38	39.5	41	43	45	47	49

SEWING *and* the CITY



THE THOMPSON SHORT **POCKET BAG (D)**

CUT 2 - SELF



D-3

