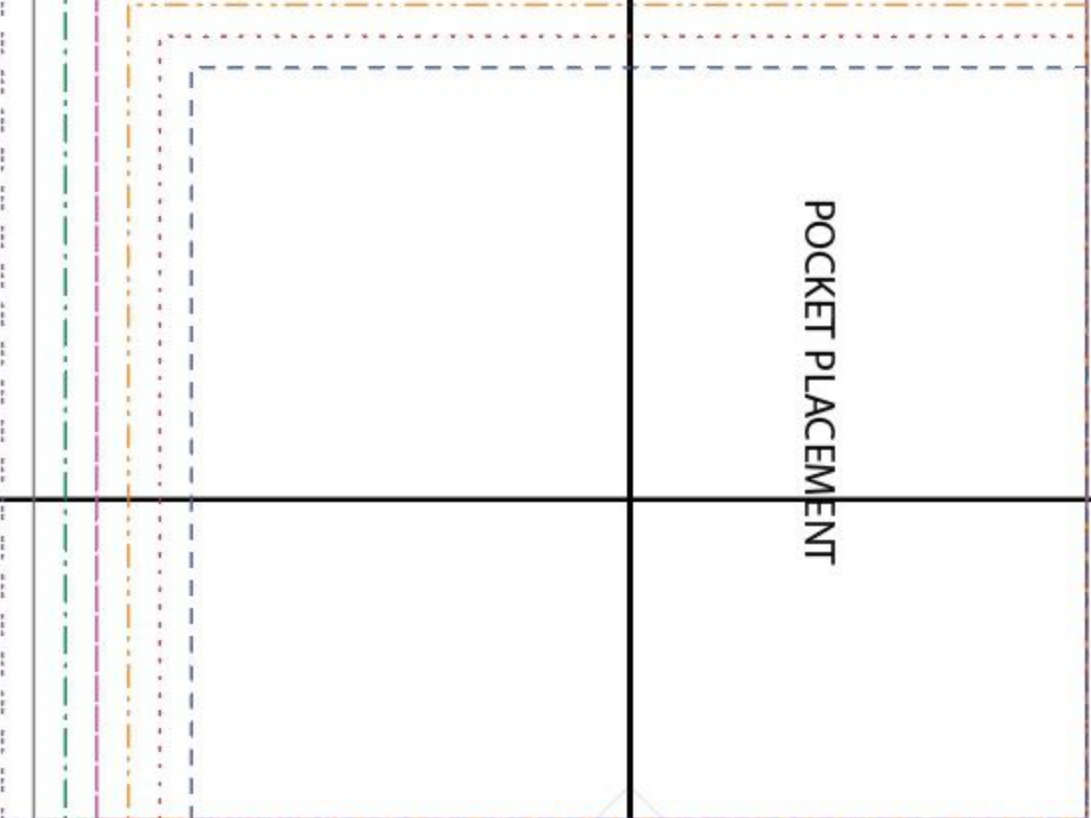


#106
KIMONO/LOUNGE ROBE
1
FRONT
CUT 1 PAIR (mirrored)
SELF



GRAINLINE

POCKET PLACEMENT



STITCH LINE

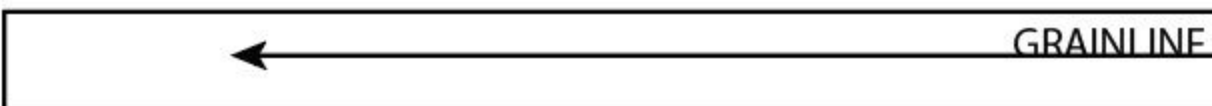
HEM FOLD VERSION A

PIECE FUSE
VERSION A

EASE 1 CM
BETWEEN M

UK-18/US14
UK-16/US12
UK-14/US10
UK-12/US8
UK-10/US6
UK-8/US4
UK-6/US2

GRAINLINE



UK-18/US14
UK-16/US12
UK-14/US10
UK-12/US8
UK-10/US6
UK-8/US4
UK-6/US2

FOLD

#106
KIMONO/LOUNGE ROBE



GRAINLINE



9. Layer trim the seam allowance and press it towards the placket.

Fold the placket back face to face at the hem and close the placket hem seam.

Trim one layer of seam allowance to half (layer trimming) to reduce bulk.

Turn the placket hem corner right side out.

