

# TABLE OF CONTENTS

SHOPPING LIST	<u>3</u>
PAGE LAYOUT GUIDE	<u>4</u>
OVERVIEW OF OPTIONS	<u>5</u>
CHOOSING YOUR SIZE AND BLENDING FOR FIT	<u>8</u>
CUTTING YOUR FABRIC	<u>10</u>
CURVED INSET POCKET	<u>11</u>
STRAIGHT INSET POCKET	<u>13</u>
BACK POCKET	<u>16</u>
SEWING THE CENTRE BACK AND INSEAM	<u>18</u>
MAKING YOUR OWN BIAS TAPE	<u>19</u>
BINDING WITH BIAS TAPE	<u>20</u>
SIDE STRIPE	<u>22</u>
ATTACHING THE WAISTBAND	<u>25</u>
THE POTZBLITZ & LILLELÜTTCHEN TEAM	<u>28</u>
TESTER PHOTOS	<u>30</u>

For help or if you have any questions, please join  
our Rabaukowitsch Facebook group here:

[https://www.facebook.com/  
groups/195553044161349/?fref=ts](https://www.facebook.com/groups/195553044161349/?fref=ts)



*Julchen & Junior*



# SHOPPING LIST

- Main fabric - woven fabrics with good drape or sweatshirt fleece are recommended
- A contrasting fabric for the side stripe and, if desired, the pocket backing
- 3 - 3.5 cm (1.18 - 1.37 inches) wide waistband elastic
- Double fold cotton woven bias tape for binding the edges

HOW MUCH?

SIZE

LENGTH x WIDTH

80:  
up to 116:  
up to 146:

0.30 m x 1 m (11.81" x 39.37")  
0.35 m x 1 m (13.77" x 39.37")  
0.40 m x 1.20 m (15.75" x 47.25")

ELASTIC AND BIAS TAPE CUT CHART

SIZE	80	86	92	98	104	110	116	122	128	134	140	146
Elastic in <b>cm</b> (incl. 0.7 cm SA)	51	52	53	54	55	56	57	60	63	64	65	66
Elastic in <b>inches</b> (incl. 1/4" SA)	20.07	20.47	20.87	21.26	21.65	22.04	22.44	23.62	24.80	25.20	25.59	25.98
Bias Tape in <b>cm</b> without pockets/ additionally for pockets	130/25	135/25	140/25	150/25	155/25	160/25	165/26	170/26	180/30	185/30	195/30	200/30
Bias Tape in <b>inches</b> without pockets/ additionally for pockets	51.18 / 9.84	53.14 / 9.84	55.12 / 9.84	59.06 / 9.84	61.02 / 9.84	63 / 9.84	64.96 / 10.24	48.03 / 10.24	70.86 / 11.81	72.83 / 11.84	76.77 / 11.84	78.74 / 77.84

## ABBREVIATIONS IN THE TUTORIAL AND ON

### PATTERN PIECES:

SA	Seam Allowance
RS	Right Side of Fabric
WS	Wrong Side of Fabric
RSF	Right Sides Facing
WSF	Wrong Sides Facing

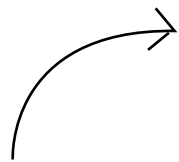
The elastic lengths given are to be used as guidelines; the length of the elastic needed can vary depending on the stretch and firmness of your elastic. Softer elastics tend to stretch more and as such could be cut shorter. If in doubt, place the elastic around the waist of the child you are sewing for to get a proper fit.

Give the tutorial a complete read-through before starting your project in order to get an overview of the steps. Simply skip the pages that are not relevant to the version you will be sewing.

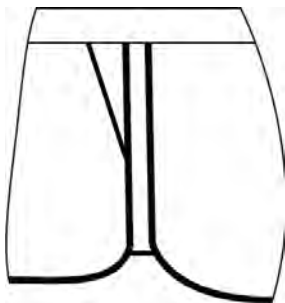
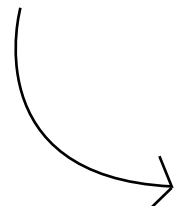


# OVERVIEW OF OPTIONS

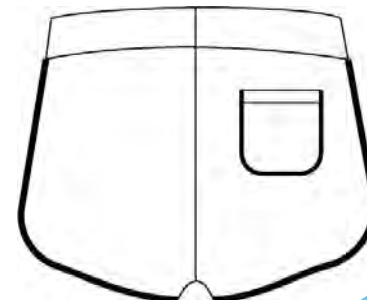
*LILLELÜTTCHEN is the perfect top to  
combine with these shorts! Have  
you seen it yet?*



STRAIGHT OR CURVED INSET POCKETS



OPTIONAL BACK POCKET





Curved inset pocket  
(turned and topstitched, no binding)



Straight inset pocket (with binding)



The LILLEÜTTCHEN goes perfectly with the POTZBLITZ shorts!



Both patterns can be combined to create a comfy jumpsuit!  
The shorts can also be sewn using stretchy fabrics in combination with the top.

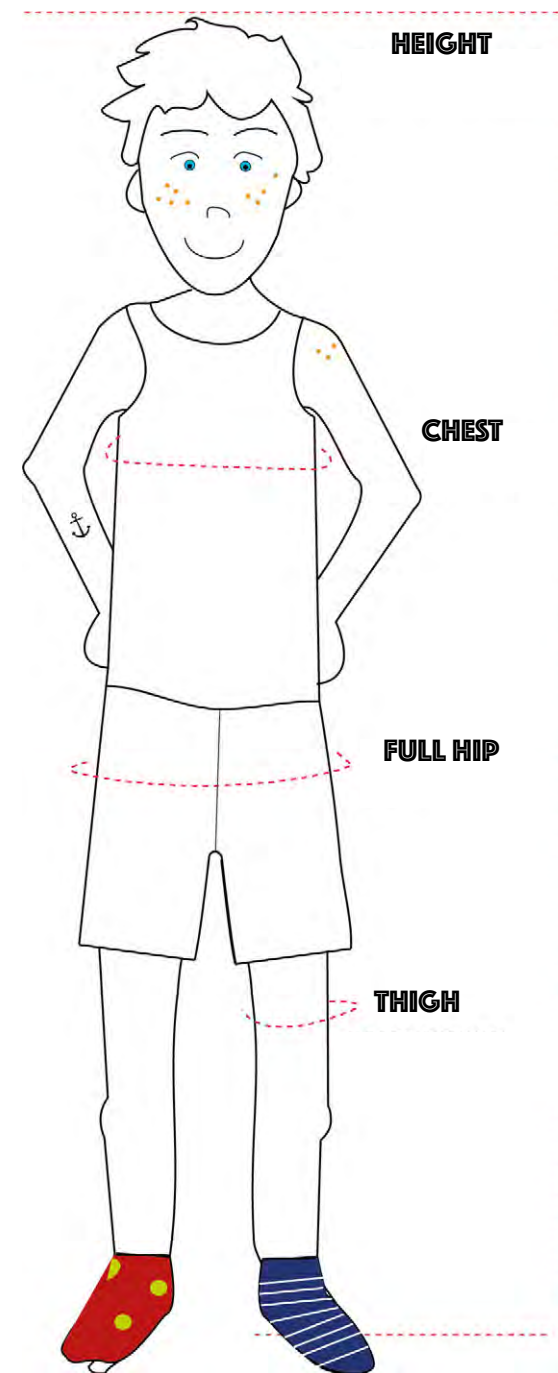
# CHOOSING YOUR SIZE AND BLENDING FOR FIT

Size	Height (cm / inches)	Full Hip (cm / inches)	Thigh (cm / inches)	Chest (cm / inches)
80	-80 / 31.5	-52 / 20.47	-28 / 11.02	-52 / 20.47
86	-86 / 33.85	-54 / 21.25	-29.2 / 11.5	-53 / 20.87
92	-92 / 36.22	-56 / 22.04	-30.4 / 11.97	-54 / 21.25
98	-98 / 38.58	-58 / 22.83	-31.6 / 12.44	-56 / 22.04
104	-104 / 40.94	-60 / 23.62	-32.8 / 12.91	-56 / 22.04
110	-110 / 43.31	-62 / 24.41	-34 / 13.39	-57 / 22.44
116	-116 / 45.67	-64 / 25.19	-35.2 / 13.86	-58 / 22.83
122	-122 / 48.03	-66 / 25.98	-37.3 / 14.69	-61 / 24.01
128	-128 / 50.39	-69 / 27.17	-39.4 / 15.51	-64 / 25.19
134	-134 / 52.75	-72 / 28.34	-41.5 / 16.34	-67 / 26.38
140	-140 / 55.12	-75 / 29.52	-43.6 / 17.17	-70 / 27.56
146	-146 / 57.48	-78 / 30.71	-45.7 / 18	-73 / 28.74

Always choose your size according to the child's height. For example, if the child is 114 cm (44.88") tall, choose size 116.

If needed, the width can be adjusted individually, as well.

When taking the hip and thigh measurements, be sure to measure at the widest part.



## ADJUSTING THE WIDTH:

In order to adjust for width, choose your base size according to the child's height, and the width according to the table above.

### **Example:**

The child you are sewing for is 114 cm (44.88") tall, so you will choose size 116 as your base size. Their hip measurement is only 58 cm (22.83"), which would put them in a size 98. In order to maintain the shape of the shorts, you will only size down a maximum of 2 sizes in width, so in this case, size 104. You will then extend the lines to size 116 for length.

You will do this for the front and back pieces, as well as the waistband, side stripes and back pocket.

For the inset pocket openings, you will follow the base size; so you will move/trace the shape and size of the size 116 pocket cut-out onto the 104 width, adjusting the pocket pieces accordingly.

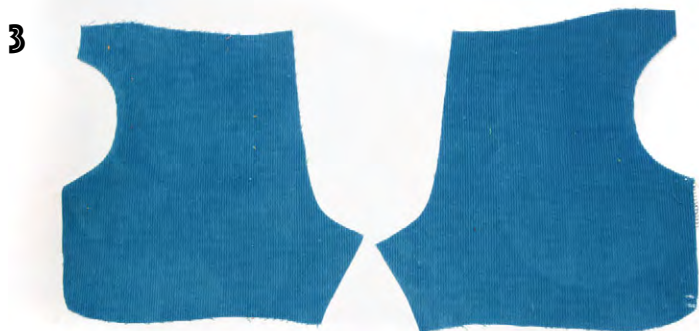
**For this pattern, you will adjust the width a maximum of 2 sizes larger/smaller from the base size according to height.**



# CURVED INSET POCKET

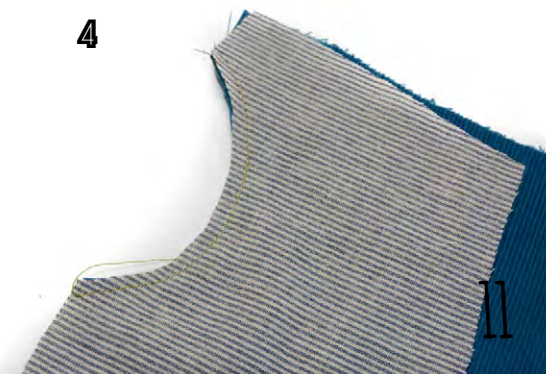
Skip the following pages if not sewing pockets.

- Start with your front pieces. You will have cut them with the cut-outs for the pocket openings. Place the pocket lining pieces onto the corresponding front pieces, RSF, and pin/clip together. **(1)**
- Sew together where pinned. Make small snips into the seam allowance, 1 - 2 cm (3/8" - 3/4") apart, snipping close to but not into your seam. **(2)**
- Turn the pocket lining to the back. Press the curve... **(3,4)**



Instead of turning and topstitching the pocket opening, you can **bind the opening** by leaving off the SA at the cut-out when cutting your fabric. You would then lay the pocket lining onto the corresponding front piece with **WSF** and sew a basting stitch along the edge. This method is described further on **page 13** for the straight pocket opening.

**4**





POTZBLITZ!

