

Mette-Marit

Nursing top
with batwing sleeves

Sizes 34 - 56



About **Mette-Marit**

Mette-Marit is a comfortable nursing top with mid-length batwing sleeves and wide bellyband. She can be made out of all stretch fabrics like sweat, fleece, summer sweat, jersey or jacquard.

The pattern includes sizes 34 – 56.

Size chart

The following chart will help you choose your correct size.

The pattern is designed for a height of 1.70m.

Size	34	36	38	40	42	44	46	48	50	52	54	56
Bust	90cm	94cm	98cm	102cm	106cm	110cm	116cm	121cm	126cm	131cm	136cm	141cm
Hips	88cm	92cm	96cm	100cm	104cm	108cm	112cm	118cm	124cm	130cm	136cm	142cm

Fabric recommendation

All stretch fabrics like sweat, fleece, summer sweat, jersey, jacquard, Punta di Roma etc.

Fabric requirement

Size	34	36	38	40	42	44	46	48	50	52	54	56
Fabric Length	1,5m	1,5m	1,5m	1,8m	1,8m	2m	2m	2m	2,2m	2,2m	2,5m	2,5m

Seam and hem allowances

The pattern does not include any seam and hem allowances. These need to be added individually, before you cut out the pattern.

Materials you will need for this project:

- Fabric (see above)
- Buttons or snap fasteners
- Soft interfacing / Vilene H 180 or H 200 to reinforce the button facing
- Scotch tape to assemble the pattern
- Scissors, measuring tape, pins or fabric clips
- Sewing machine, overlocker/ coverlocker (if available), iron

Important information

- Before cutting out your top, please read the entire instructions!
- The pattern does not include any seam or hem allowances.
- To correctly open and print your pattern, please use Adobe Acrobat Reader.
- When printing your pattern, please make sure you have scaled the file to 100 % or without any page adjustments.

Legal notice:

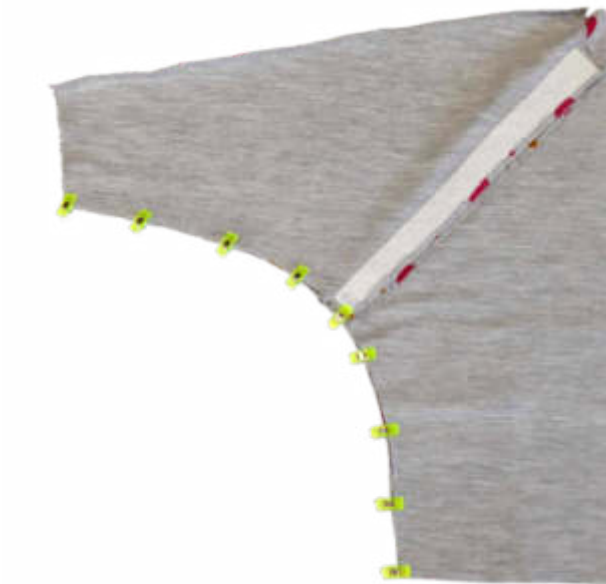
Idea, pattern and design - copyright by Matthiessen & Beier GbR.

This pattern may be used for private purposes only.

Sharing or sale, exchange, copying, reprint or publication (even in parts) of this pattern are expressly prohibited.



Mind to only stitch close to the edge in order to leave a wide nursing opening.



Now fold the top right sides facing and pin the side seam.

Close the seam in one go and repeat these steps with the other side.



Place the front lining, right side facing you, in front of you. Place the back lining on top, right sides facing.

Pin the shoulder seams and close the seams.



seite / page 2äV

schnittkante / cutting edge



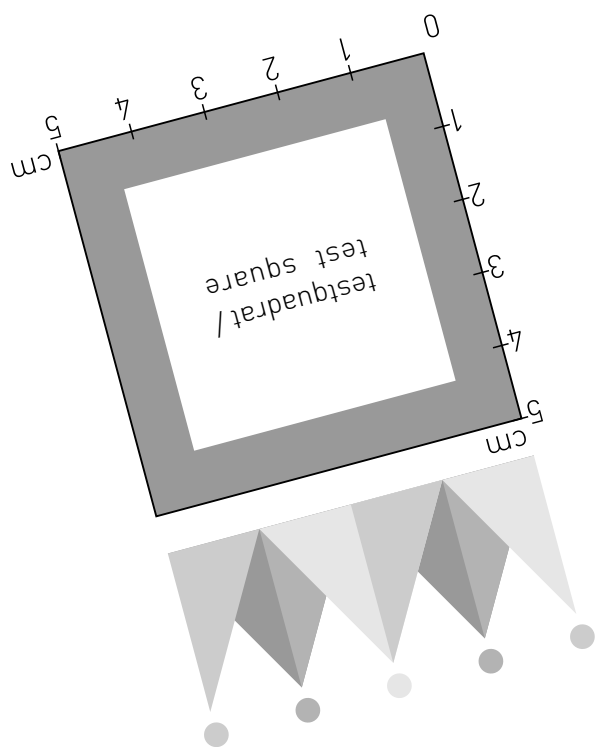
seite / page 1äV

klebekante / glue edge

seite / page 3äV

seite / page 4äV

klebekante / glue edge



METTE-MARIT
leeve front