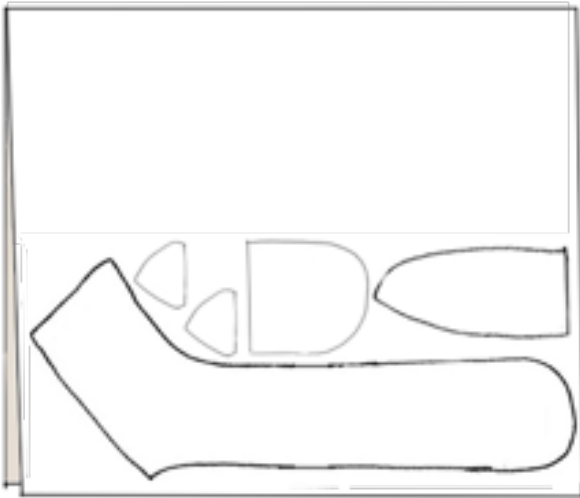


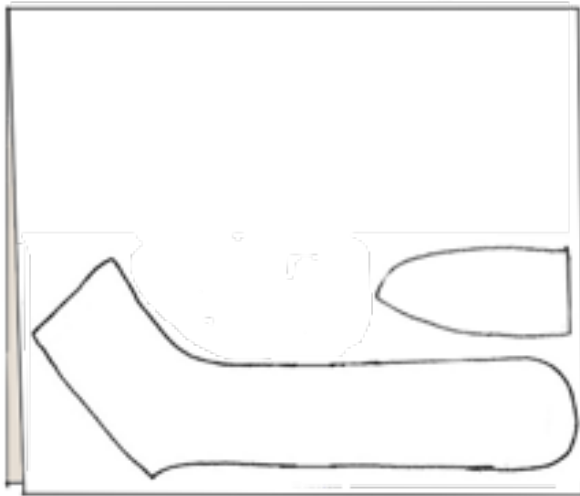
# Animal Hooded Scarf - PDF Sewing Pattern

**Fabric Layout:**

**Outer Fabric Layout:**



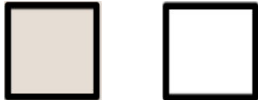
**Lining Layout:**



**Inner Ear and Paw Layout:** (Do not use Template pieces here, use Ear piece and Paw piece)



**Fabric Key:** Right Side Wrong Side

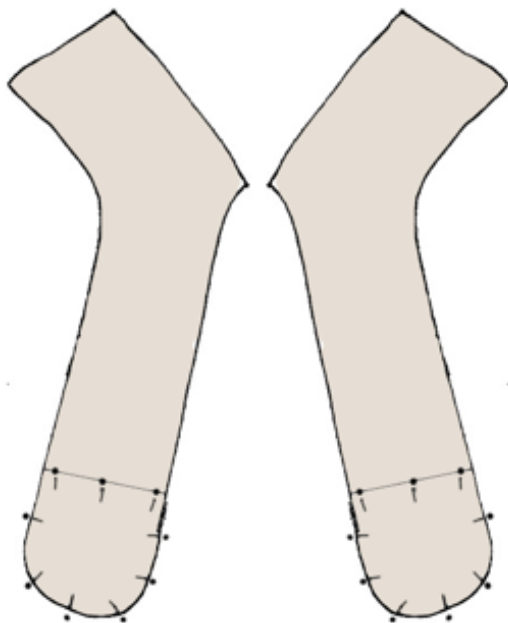


**Seam allowance:** 1/2 in. (1.3 cm)

# Animal Hooded Scarf - PDF Sewing Pattern

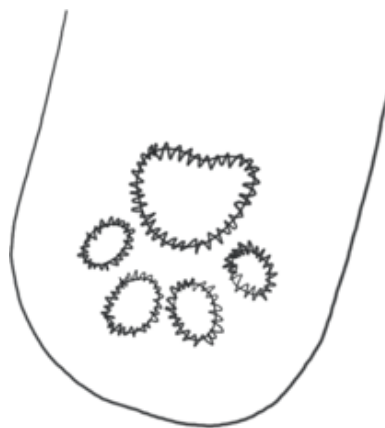
## Step 5 (Paw Applique Cont.)

Line up Paw pieces to the Liner pieces with right sides facing up, pin around edges.



## Step 6 (Paw Applique Cont.)

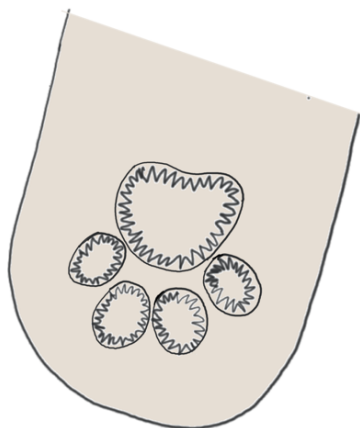
Using a wide zig stitch, and working from the wrong side, sew along drawn paw prints.



## Step 7 (Paw Applique Cont.)

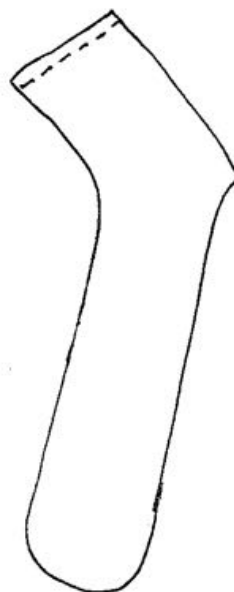
Flip over. Remove pins and carefully trim off excess Paw Applique fabric, leaving the paw design in-tact.

Cut as close to stitching as you can without cutting stitches.



## Step 8

Moving back to the Exterior fabric, pin the Top of the Hood Side pieces together with right sides facing. Sew.



# Animal Hooded Scarf - PDF Sewing Pattern

## Step 13 (Ears Cont.)

Flip Ear fronts to the right side.

Remove pins and carefully trim off excess Inner Ear fabric.

Cut as close to stitching as you can without cutting the stitching.



## Step 14 (Ears Cont.)

Flip the Ear back pieces over and place on top of Ear fronts (right sides together).



Pin and sew around top edges, leaving bottom open.



Cut notches in seam allowance according to the ear shape chosen. Be careful not to cut stitching.



Flip right side out

## Step 15

Line up Ears to placement lines on Hood Side pieces, with front of ears facing down. Pin in place and baste.

