

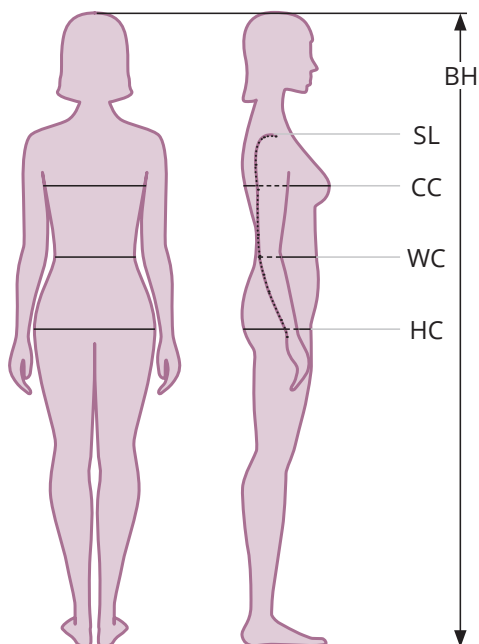
!WHOOOP

PATTERN
No 71
134 - 176





**ALSO
AVAILABLE**



confection size	textile requirement
134	60 cm
140	60 cm
146	65 cm
152	65 cm
158	70 cm
164	70 cm
170	75 cm
176	75 cm

Recommended fabrics

Please use stretchy fabrics (knitwear) to sew this pattern.

confection size	134	140	146	152	158	164	170	176
BH body height	134 cm	140 cm	146 cm	152 cm	158 cm	164 cm	170 cm	176 cm
CC chest	67 cm	70 cm	73 cm	76 cm	79 cm	82 cm	85 cm	88 cm
WC waist	59,5 cm	61 cm	62,5 cm	64 cm	65,5 cm	67 cm	68,5 cm	70 cm
HC hip	72 cm	75 cm	78,5 cm	82 cm	85,5 cm	89 cm	92,5 cm	96 cm
SL sleeve length	47,3 cm	49,8 cm	52 cm	54,2 cm	56,4 cm	58,6 cm	60,8 cm	63 cm

Legal Notice

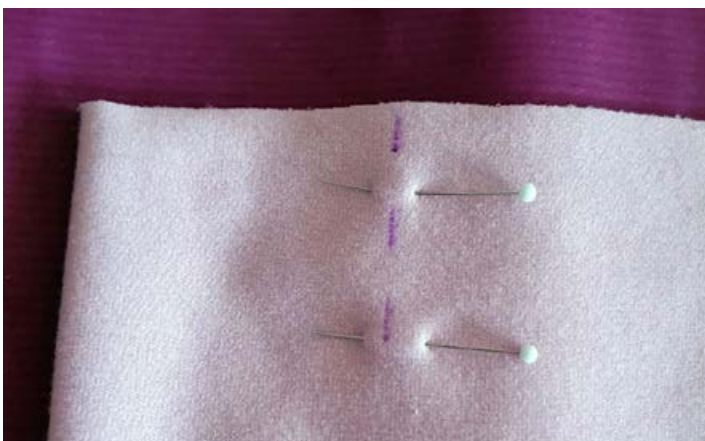
Runenstein-Schnittmuster, owner Nina Ströher
Gerther Straße 37, 44627 Herne, +49 178 2695995, Email: whoop@runenstein.com
Responsible for content according to § 10 paragraph 3 MDStV:
Runenstein-Schnittmuster, owner Nina Ströher, Copyright © 2020

Seam allowances

!Whoop patterns do not contain seam allowances. Please add the seam allowance you are used to. We recommend 1.5 cm and 3 cm at the hems for a first cut. If you have already sewn the cut and the size fits, a seam allowance of 0.7 cm is sufficient. This corresponds to the width of the presser foot of your sewing machine and 1.5 cm at the hems.

Prewash fabrics

Many fabrics run in when washed for the first time. We, therefore, recommend pre-washing the fabrics.



Recommended fabrics

Please use stretchy fabrics (knitwear) to sew this pattern.

Legal issues

!Whoop patterns are not allowed to be copied or reproduced in any other way. In small editions, models sewn according to !Whoop patterns may be sold. For larger editions and all other commercial uses, the consent of the management is required. !Whoop assumes no liability for any errors in the pattern.

Prepare pleat

In the pattern a pleat is provided at the front and back. You can easily omit one of them by simply folding the pattern at the line for the pleat and thereby moving the fabric break.

Take the front part 2 and fold it right to right.

Apply the mark for the pleat from the pattern to your fabric. Draw a line about 3 cm long.

Pin this area well.



Now make a small seam (approx. 3 cm) exactly where the mark is in the pattern. Make sure that you fasten the end of the seam well so that it does not tear later.



Lay the fabric of the pleat flat apart and spread it evenly on both sides. The left side of the fabric is on top.



Pin the pleat and sew over the pleat once in the area of the seam allowance. This seam should not be seen later, it only makes it easier for you to continue sewing. So make sure that you do not sew too deep.



This is what your pleat looks like from the right now.

Repeat these steps for the back section.