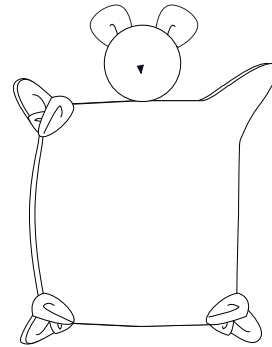


Teddy



Teddy:

Teddy is a stuffed animal, cuddly toy and a tooth cloth -TEDDY is soooo cute and easy to sew!
a nice baby shower gift!

**The pattern already includes 1.5 cm seam allowances!
Suitable for beginners. With detailed photo instructions!**

Fabric recommendation: jersey, velor fabrics, fleece or sweatshirt fabrics

Lay out the pattern pieces on a double layer of fabric (right sides facing).

Fabric width 140 cm /55¹/₈in

Fabric width: 140 cm Fabric: 42 cm/ 16¹⁷/₃₂in

Lining: jersey, interlock knits, velour knits or jersey knits

Lining length for head pieces and ear pieces.

Fabric width: 35 cm/13²⁵/₃₂in

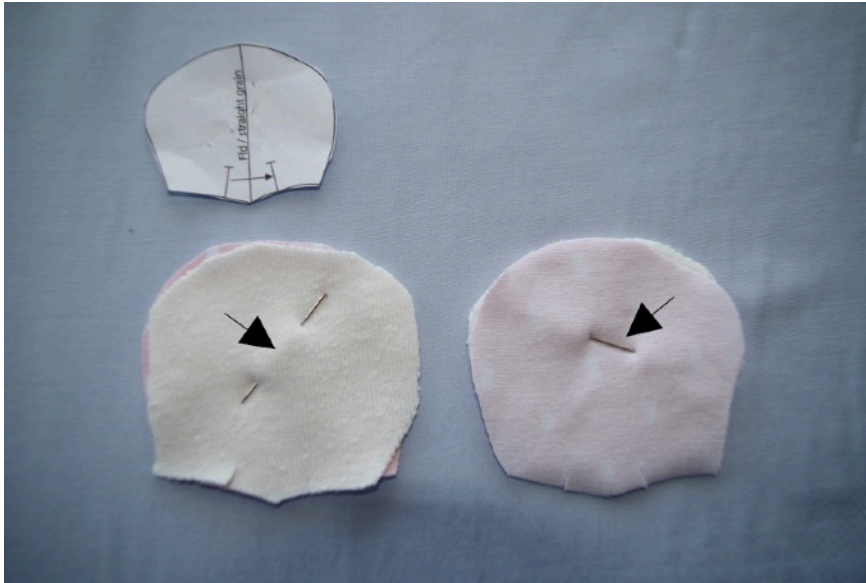
Fabric: 20 cm/7⁷/₈in

Fuse interfacing for ear panels.

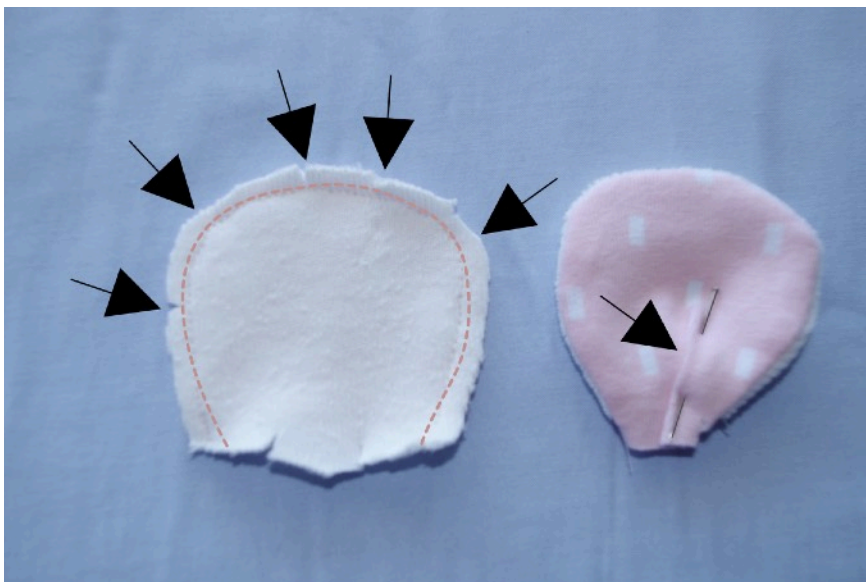
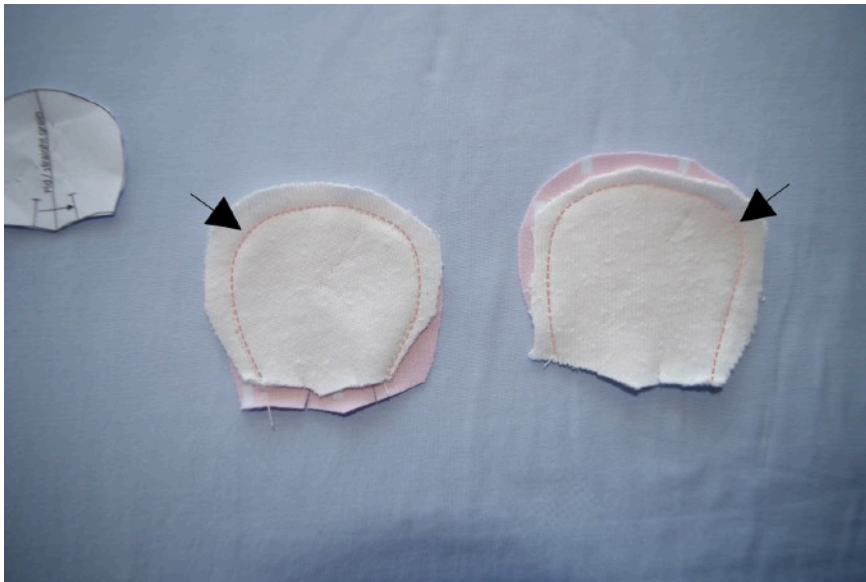
Important for e-book:

"Page, Sizing and Handling" should be set to "Actual size". No scaling is required while printing. Printing orientation should be set to "Auto Portrait/ Landscape".

Please check if the measure square 5 cm to 5 cm/ 1 ²⁵/₃₂ in. to 1 ²⁵/₃₂ in. matches with your printing.



Fuse interfacing to ear panels. Stitch ear pieces together in pairs (shell and lining), right sides facing.



Trim and taper seam allowances. Turn ears right side out and stuff