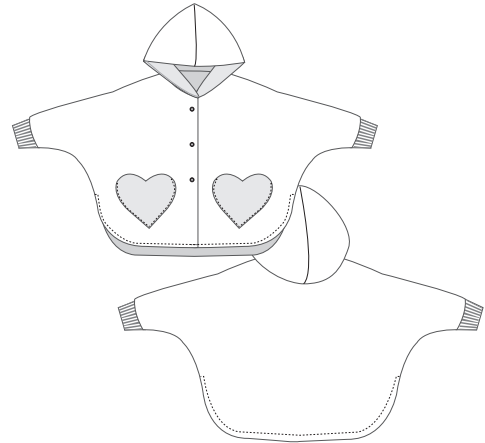


Mara©



Reversible poncho „Mara“

Very beautiful, lined reversible cape with sleeves and hood Model "Mara" for girls and boys. This cape with cuffs and snap fasteners is perfect for spring and autumn, with heart pockets for girls (model A) and normal pockets (model B) for boys.

The poncho can be combined with the „Fiocco“ pants from Patternforkids.

The e-book includes detailed photo instructions and descriptions .Suitable for advanced seamstresses! Seam allowances are already included in the pattern!

Recommended fabrics: Fleece, interlock knits, velour knits, jersey knits.

Lining: Jersey knits, Interlock knits, velour knits.

Fabric width 140 cm/55¹/₈in.

Lay out the pattern pieces on a double layer of fabric (right sides facing).

Size	Fabric 1 length	Fabric 2 length
9m/12m	85 cm/33 ¹⁵ / ₃₂ in	85 cm/33 ¹⁵ / ₃₂ in
18m /2y	95 cm/37 ¹³ / ₃₂ in	95 cm/37 ¹³ / ₃₂ in
3y/4y	105 cm/41 ¹¹ / ₃₂ in	105 cm/41 ¹¹ / ₃₂ in
5y /6y	110 cm/43 ⁵ / ₁₆ in	110 cm/43 ⁵ / ₁₆ in
7y/8y	115 cm/45 ⁹ / ₃₂ in	115 cm/45 ⁹ / ₃₂ in
9y/10y	115 cm/45 ⁹ / ₃₂ in	115 cm/45 ⁹ / ₃₂ in

Knitted cuffs: fabric width 50 cm

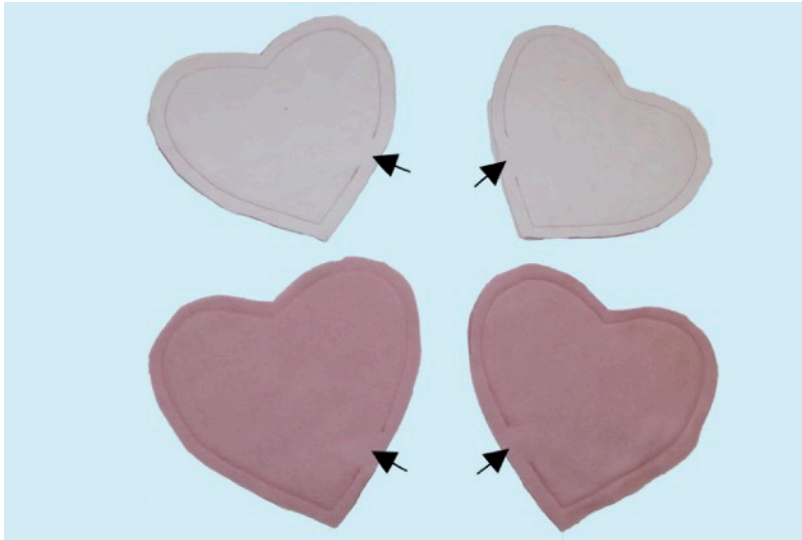
Fabric length 30 cm

3 jersey snaps silver-colored (12 mm/0 ¹⁵/₃₂ in)

Important for e-book:

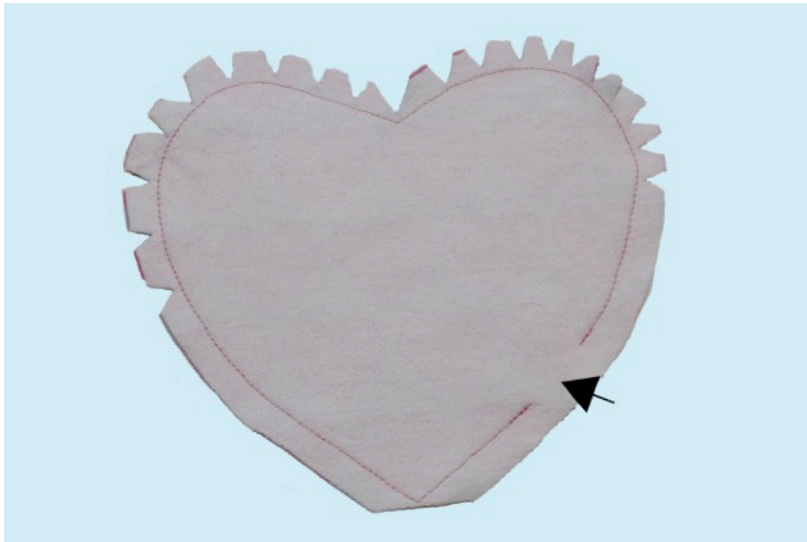
"Page, Sizing and Handling" should be set to "Actual size". No scaling is required while printing. Printing orientation should be set to "Auto Portrait/ Landscape".

Please check if the measure square 5 cm to 5 cm/ 1 ²⁵/₃₂ in. to 1 ²⁵/₃₂ in. matches with your printing.



Heart pocket A:

Pin pairs of pockets together, right sides facing and stitch. Leave an opening of approx. 2 cm/ $0\frac{25}{32}$ in at one side.

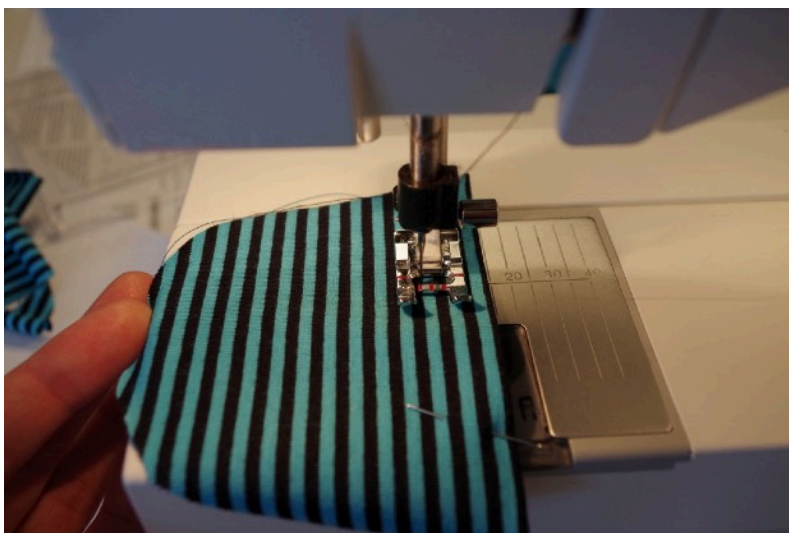


Trim and taper seam allowances at corners and clip them along curves.





Turn pocket right side out through its open side edge and press.



Pocket B:

(Note: the image shows a different variant model)

Press and stitch hems at opening edges of pockets. Pin and topstitch pockets in place as marked on the pattern.