

# Siena©



the pattern contains 3 variations and two sewing instructions!

## **Dress A:**

Dress long like a tunic, with loops and top facing in contrast fabric (lined).

**Without photo instructions! You can use instructions B and C for this model!**

The dress is not just for summer - it can easily be combined with a t-shirt and tights underneath in winter.

## **Dress B Siena:**

Dress Siena (B) with hem frills, loops and top facing in contrast fabric (lined).

The dress is not just for summer - it can easily be combined with a t-shirt and tights underneath in winter.

## **Dress C Steffi:**

With hem in contrast fabric, buttons and top facing in contrast fabric (lined).

The dress is not just for summer - it can easily be combined with a t-shirt and tights underneath in winter.

the pattern is suitable for beginners!

## **Important for e-book:**

"Page, Sizing and Handling" should be set to "Actual size". No scaling is required to print. Printing orientation should be set to "Portrait." Please check that the measure square on the print is 5 cm / 3 <sup>15</sup>/<sub>16</sub> in

## ★ Instructions dress B “Siena”:

Dress Siena (B) with hem frills and loops. With facing of contrast fabric on top and lined

Before cutting out the garment pieces, **add seam allowances to the original contours**: Seam allowance 1 cm / 0 25 /<sub>64</sub> in and hem 3 cm / 1 3 /<sub>16</sub> in

**Recommended fabrics:** cotton, light denim, baby corduroy

**Recommended linings:** cotton

Stoffverbrauch bei 1,40 Meter Stoffbreite

Bei doppelter Stofflage zuschneiden, rechte Seite innen.

**Stoffempfehlung:** Baumwolle, Musselin oder Baby Cordstoffe.

Stoffverbrauch bei 1,40 Meter Stoffbreite

**Vlieseline** (H180 oder H200) für Schleifen 10 cm

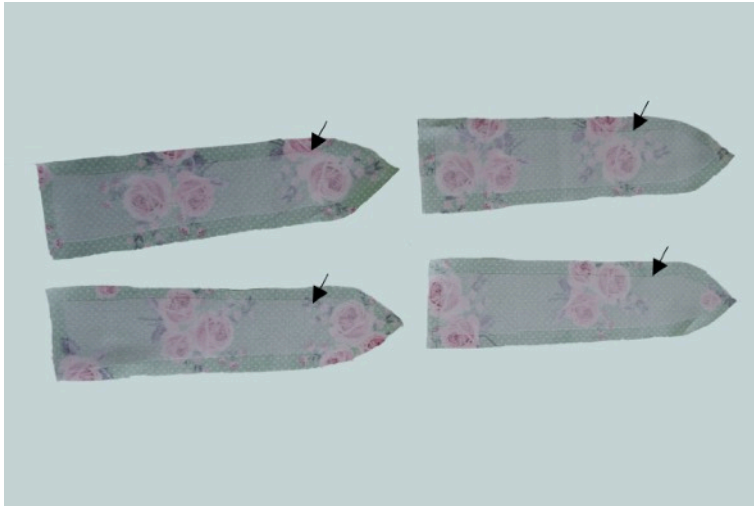
Size	Fabric length	Lining length for facing
6M / 9M	45 cm / 17 3/4 in	35 cm/13 <sup>25</sup> / <sub>32</sub> in
12M / 18M	55 cm / 21 5/8 in	35 cm/13 <sup>25</sup> / <sub>32</sub> in
2Y / 3 Y	60 cm / 23 5/8 in	40 cm / 15 <sup>3</sup> / <sub>4</sub> in
4Y / 5Y	65 cm/25 <sup>19</sup> / <sub>32</sub> in	40 cm / 15 <sup>3</sup> / <sub>4</sub> in
6Y / 7Y	70 cm/27 <sup>9</sup> / <sub>16</sub> in	40 cm / 15 <sup>3</sup> / <sub>4</sub> in
8Y / 9Y	77 cm/30 <sup>5</sup> / <sub>16</sub> in	45 cm / 17 <sup>3</sup> / <sub>4</sub> in
10Y / 11Y	85 cm/33 <sup>15</sup> / <sub>32</sub> in	45 cm / 17 <sup>3</sup> / <sub>4</sub> in

Size	Measurements for the ruffle/frill
6M / 9M	13 cm//5 <sup>1</sup> / <sub>8</sub> in width and 60 cm / 23 5/8 long + Seam allowance 1 cm / 0 25 / <sub>64</sub> in
12M / 18M	13 cm/5 <sup>1</sup> / <sub>8</sub> in width and 66 cm/25 <sup>63</sup> / <sub>64</sub> in lang + Seam allowance 1 cm / 0 25 / <sub>64</sub> in
2Y / 3 Y	14 cm/ 5 <sup>33</sup> / <sub>64</sub> in in breit und 85 cm/33 <sup>15</sup> / <sub>32</sub> in + Seam allowance 1 cm / 0 25 / <sub>64</sub> in
4Y / 5Y	15 cm/ 5 <sup>29</sup> / <sub>32</sub> in breit and 111 cm/43 <sup>45</sup> / <sub>64</sub> in lang + Seam allowance 1 cm / 0 25 / <sub>64</sub> in
6Y / 7Y	15 cm/ 5 <sup>29</sup> / <sub>32</sub> in breit and 111 cm/43 <sup>45</sup> / <sub>64</sub> in lang + Seam allowance 1 cm / 0 25 / <sub>64</sub> in
8Y / 9Y	15 cm/ 5 <sup>29</sup> / <sub>32</sub> in breit and 111 cm/43 <sup>45</sup> / <sub>64</sub> in lang + Seam allowance 1 cm / 0 25 / <sub>64</sub> in
8Y / 9Y	15 cm/ 5 <sup>29</sup> / <sub>32</sub> in breit and 111 cm/43 <sup>45</sup> / <sub>64</sub> in lang + Seam allowance 1 cm / 0 25 / <sub>64</sub> in

Please look at the fabric cutting plan on the pattern!

### Application motif (optional) without photos:

Trace motif from pattern sheet on double-sided fusible web and fuse web to wrong side of appliqué patch. Cut patch along its outlines and remove paper backing. Fuse patch to right side of front panel. Pin tear-away backing to wrong side of front panel under appliqué patch. Appliqué patch with reinforced straight stitch. Remove tear away backing



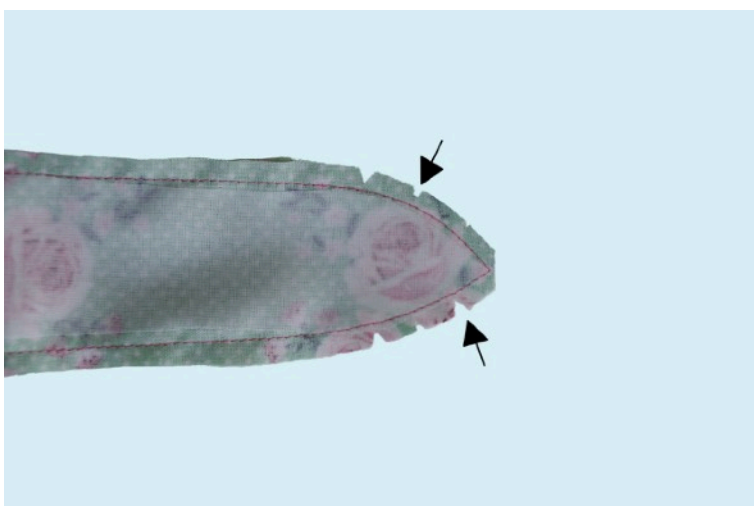
**Please note:**

The instructions are shown in two different sorts of fabrics.

Fuse interfacing to 4 pieces of bows ties



Pin bow ties together, right sides facing and stitch. Leave bottom edge open for turning tie right side out.



Trim and taper seam allowances and cut the corner. Turn bows right side out and press.