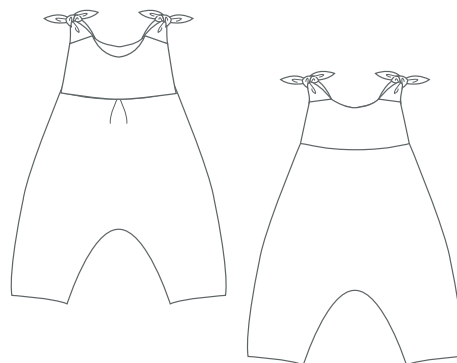


Lotte[©]



★ Baby Overall „Lotte“:

Super sweet! ★ Fresh and full of energy - your baby will just feel happy in the overall ★ the sewing pattern is for a trendy, comfortable dungaree with loops.

Overall without a central seam, wide shape, sleeveless with loops on the shoulders and yoke at the back. The jumpsuit can be worn with or without a body. The jumpsuit sewing pattern looks great on babies and toddlers alike. Depending on the choice of fabric, the pattern can be sewn for winter or summer - an all-rounder ★

The pattern contains two variants!

Variant A: Summer jumpsuit without a center seam and with straps to button and elastic in the back. The romper can be worn with or without a body. Without photo instructions!

Variant B: Model Lotte Overall without a central seam, with loops on the shoulders and yoke at the back. The jumpsuit can be worn with or without a body. With photo instructions!

Suggested fabrics: cotton, muslin or baby corduroy. Before cutting out the garment pieces, add seam allowances to the original contours: Seam allowance 1 cm / 0 25/64 in .Lay out the pattern pieces on a double layer of fabric (right sides facing). Fabric width 140 cm / 55 1/8 in

Size	Fabric	Lining
1M/3M	60 cm/23 ⁵ / ₈ in	20 cm/7 ⁷ / ₈ in
6M/9M	70 cm/27 ⁹ / ₁₆ in	22 cm/ 8 ²¹ / ₃₂ in
12M/18M	80 cm/31 ¹ / ₂ in	25cm/9 ²⁷ / ₃₂ in
2Y/3Y	90 cm/35 ⁷ / ₁₆ in	25cm/9 ²⁷ / ₃₂ in

Fusible web (H180 oder H 200) for loops, front and back yokes

Gr. 56/52 cm 20/ 7⁷/₈in, Gr 68/74 cm 22/ 8²¹/₃₂in, Gr.80/86 cm 25/ 9²⁷/₃₂in,
92/98 cm 25/ 9²⁷/₃₂in

Important for e-book:

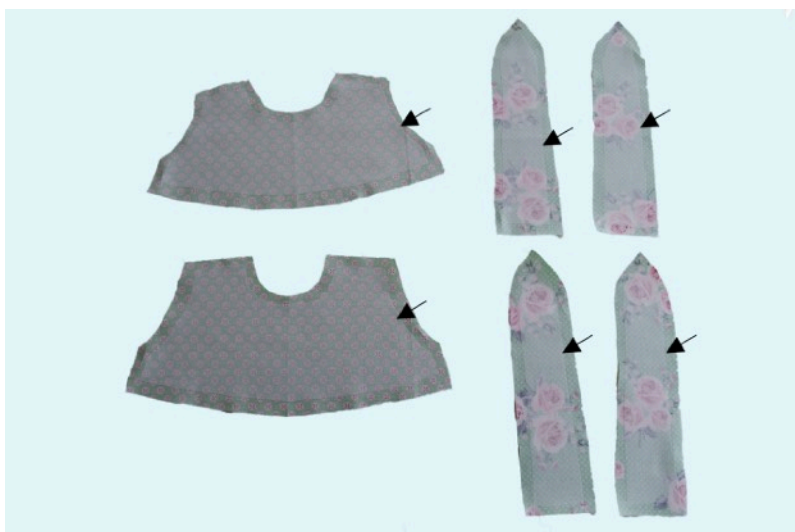
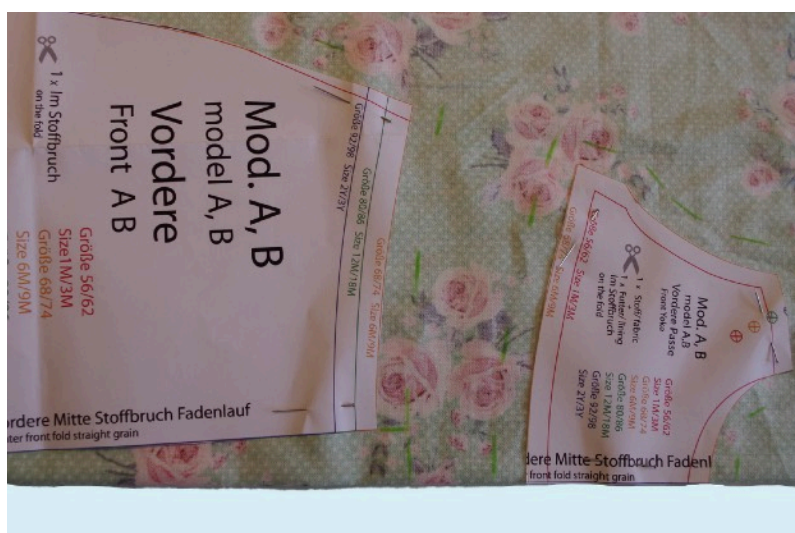
“Page, Sizing and Handling” should be set to “Actual size”. No scaling is required to print. Printing orientation should be set to “Portrait.” Please check that the measure square on the print is 5 cm/ 1³¹/₃₂ in



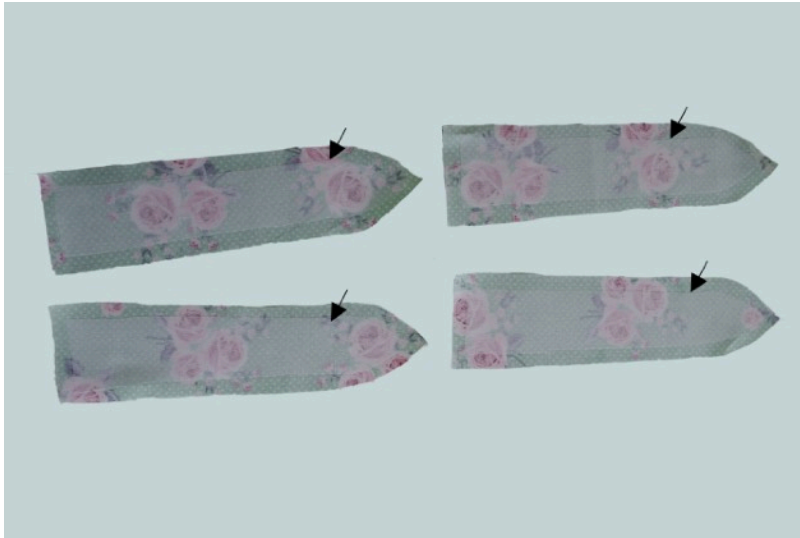
Box pleat:

Before cutting out the front, do not place the center front at the top on fabric fold, but 2 cm/
0²⁵/₃₂in. away from it.

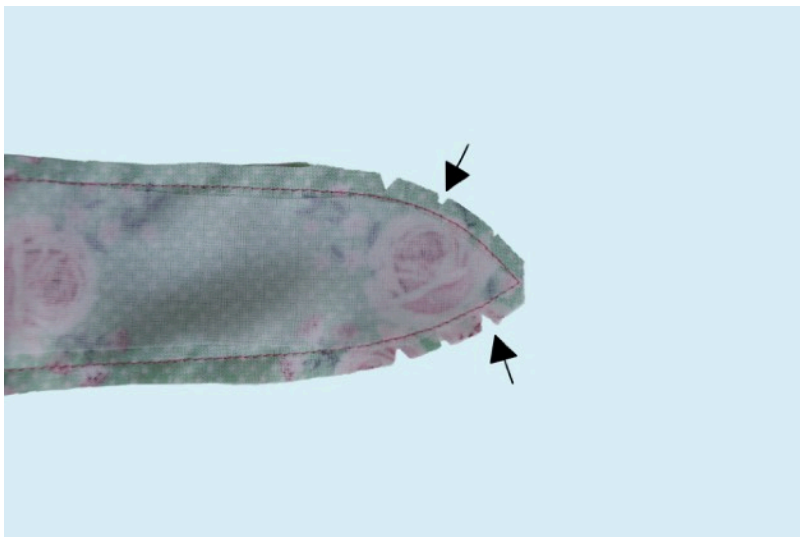
This results in a box pleat.



Fuse interfacing to 4 pieces of bows ties and inner yoke panels.



Pin bow ties together, right sides facing and stitch. Leave bottom edge open for turning tie right side out.



Trim and taper seam allowances and cut the corner. Turn bows right side out and press.