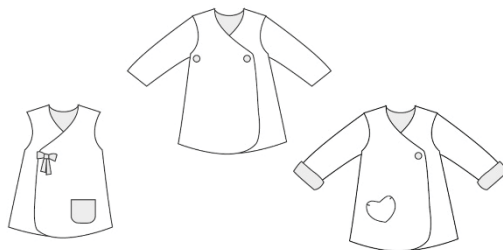


LENA ©



Use instruction for all model types A, B and C (photo instruction)
To be combined with ENNA leggings.

Variant A: Tunic wrap- dress with buttons, with or without sleeves

Suitable for beginners!

For summer: Sewn from jersey knits with cotton fabric lining.

For winter: Sewn from fleece or sweat knits with jersey lining

size	fabric length	lining length
18M/2Y	50 cm	50 cm
3Y/4Y	58 cm	58 cm
5Y/6Y	65 cm	65 cm
7Y/8Y	75 cm	75 cm

Variant B: Wrap- dress, suitable for beginners.

For summer: Sewn from jersey knits with cotton fabric lining.

For winter: Sewn from fleece or sweat knits with jersey lining. With buttons.

size	fabric length	lining length
18M/2Y	90 cm	90 cm
3Y/4Y	110 cm	110 cm
5Y/6Y	125 cm	125 cm
7Y/8Y	150 cm	150 cm

Variant C: Wrap- dress, suitable for beginners. With illustrated photo instructions!

For summer: Sewn from jersey knits with cotton fabric lining.

For winter: Sewn from fleece or sweat knits with jersey lining. With loops, heart bags and sleeve cuffs

Before cutting out the garment pieces, add seam and hem allowances to the original contours.
Seam 1.5cm, hem 3 cm. Lay out the pattern pieces on a double layer of fabric (right sides facing).

size	fabric length	lining length
18M/2Y	90 cm	90 cm
3Y/4Y	110 cm	110 cm
5Y/6Y	125 cm	125 cm
7Y/8Y	150 cm	150 cm



Pin heart pocket panels right sides together and stitch. Leave a little opening for turning bag inside out. Trim and taper seam allowances.



Turn pockets inside out and press.



Pin pockets to front panels as marked on pattern. Opening will be closed by topstitching!



Stitch shoulder seams right sides facing. Iron the seams.

