

# BIG BAG

## IN TWO VERSIONS



VERSION 1: BAG WITH DRAWSTRING SEAL



VERSION 2: REVERSIBLE BAG

This is a sewing pattern and instructions for your new spacious bigbag in two versions. Version one has a useful drawstring seal, version two is a reversible bag. Perfect for vacation, shopping and being outside!

You'll need:  
Fabric, sewing machine, scissors,  
thread, iron, pins.  
For version one you'll additionally  
need a safety pin and a cord.

Skill level:



# PREPARATIONS

I recommend two different fabrics, preferably woven cotton fabric like canvas or popeline. In case of very light fabric, you should use Vlieseline.

Amount of fabric needed:  
each for outside and lining  
approx. 105 cm x 65 cm  
resp. 105 x 90 (lining version 1)

Further materials:  
cord for version 1 (approx. 100 cm)

If you chose version 1, start at step A, for version 2 skip the letter instructions and head over to step 1.

Print the pattern pieces in their original size, cut them out and glue them together at the markings. The little symbols will help you.

Transfer the outlines and markings with the help of a crayon or taylor's chalk to the wrong side of the fabric. Cut the pieces out adding a sewing allowance of about 1cm, unless otherwise stated.

## These pieces are needed for version 1:

- A** 2x main bag piece (main fabric)
- B** bottom piece (1x main fabric and 1x lining)
- C** 2x upper piece with handles (lining)
- D** 2x lower bag piece (lining)
- F** 1x slider for cord (main fabric)

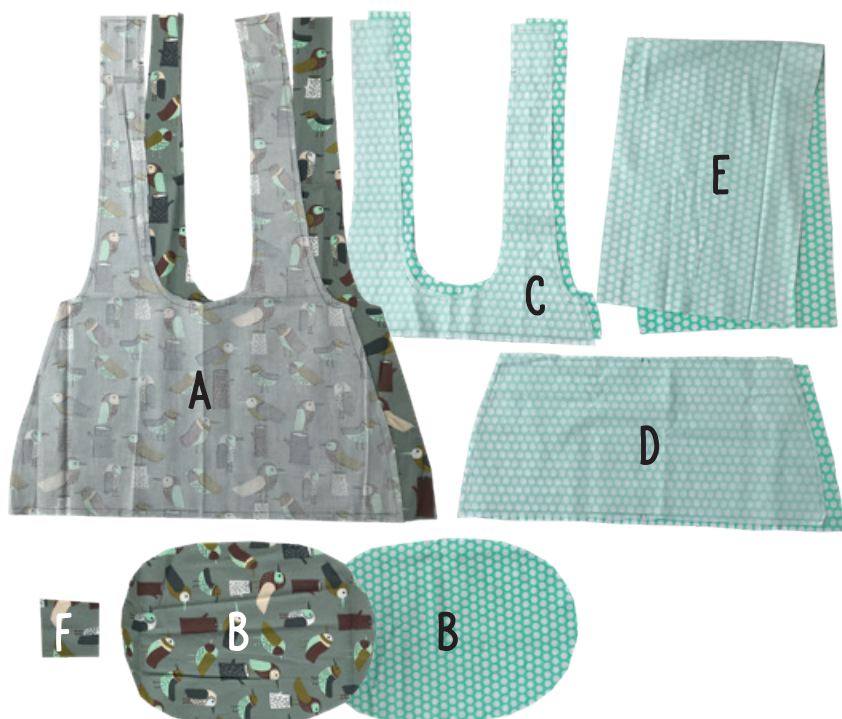
## cut out additionally:

- E** 1x cuff for the seal (lining) 80cm x 26cm

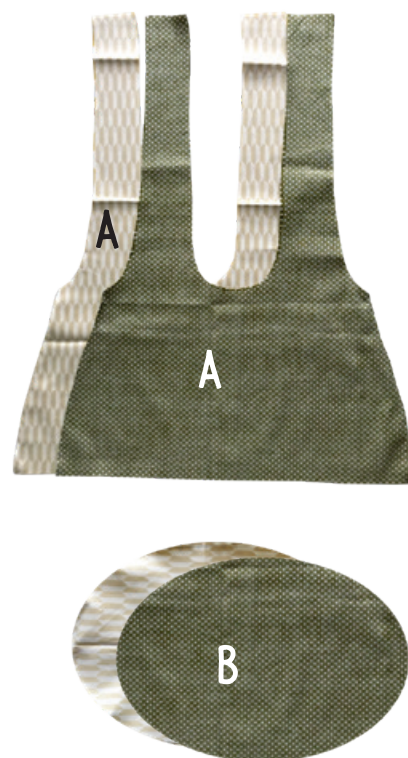
## These pieces are needed for version 2:

- A** 2x main bag piece (main fabric)
- A** 2x main bag piece (lining)
- B** bottom piece (1x lining and 1x main fabric)

### VERSION 1: BAG WITH DRAWSTRING SEAL



### VERSION 2: REVERSIBLE BAG





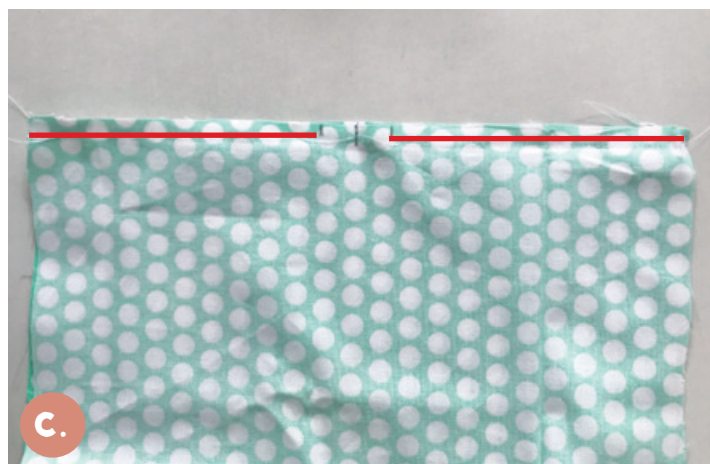
# VERSION 1



First step is to sew the side seams of the upper and lower bag pieces (see red line).



Now take the cuff piece and fold it in half, right sides facing. We want to sew a ring, so the short sides are placed onto each other. Mark the middle on the open short side and also make some marks 1,5 cm above and below.



Sew the open side, but leave a gap between the makrings you just made. This will be the opening, where the cord is to be threaded trough later.



Fold the ring open, spread and iron the seam allowance. Sew and fix the seam allowance left and right of the seam.