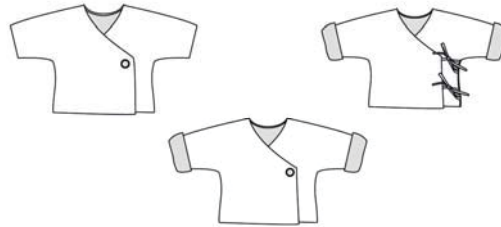


FIORINO ©



Model A is a summer jacket with lightweight lining

Model B with lining, cuffs and buttons

Model C with lining, cuffs and loops

Use instructions for all model types A, B and C

Before cutting out the garment pieces, add seam and hem allowances to the original contours. Seams 1,5 cm, hems 3cm

Lay out the pattern pieces on a double layer of fabric (right sides facing).

CM / Inches

Size (Body height)

56/62 (1M/3M)

68/74 (6M/9M)

80/86 (12M/18M)

92/98 (2Y/3Y)

Fabric length

70 cm / 27.56 in.

90 cm / 30.43 in.

100 cm / 39.37 in.

110 cm / 43.31 in.

Lining length

70 cm / 27.56 in.

90 cm / 30.43 in.

100 cm / 39.37 in.

110 cm / 43.31 in

Model C left tie string 25 cm length

Model C right tie string 25 cm length



Pin shoulder seams of both shell and lining right sides together and stitch. Press the seams.



Pin sleeve hems of shell and lining right sides together and stitch.





Stitch sides and sleeve seams, right sides facing, tie strings in between, leaving approx. 8 cm opening in one lining's side seam for turning jacket right side out.



Place front edges, necklines and bottom hems of shell and lining together, right sides facing, and pin and stitch them together. Tie strings are in between.

