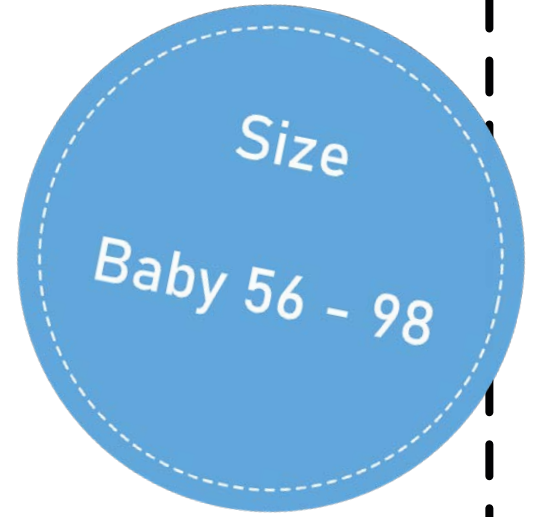
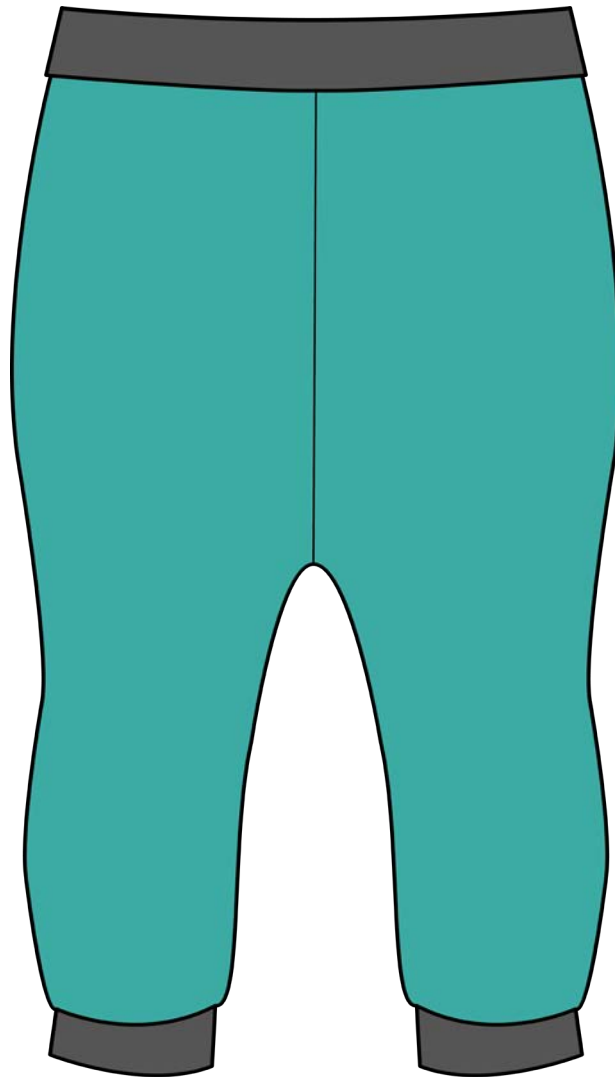


# baggy trousers



## Sut

simple bloomers with cuffs  
on the stomach and legs



# Table of contents

Adjust sewing pattern .....	4
Measurement table .....	5
Material .....	6
Consumption of fabric .....	6
Tools .....	6
Layers in PDF .....	7
Print the pattern.....	7
Gluing the pattern .....	8
Pattern pieces .....	8
Instructions .....	9
Sew side seam.....	9
Sew cross seam .....	9
Sew inside leg seam .....	9
Seam cuffs .....	10

**The sewing patterns are in separate files.**

## **ATTENTION!!!**

If you have bought this pattern from Makerist, the page numbers may shift by one page because Makerist adds another page to the PDF.

It is best to use the instructions in the .zip file.

You will find the pattern in the .zip file in separate folders. For each fit class there is a folder with the pattern in A4 and A0.

## Material

---

- Outer fabric: fleece, sweat or similar
- Lining: Jersey with at least 5% elastane
- 4 jersey press studs
- optional: cuffs or elastic binding tape



## Consumption of fabric

---

in metres at 1,40 m (55,1 inch) width

Size	56	62	68	74	80	86	92	98
Fabric cm (inch)	0,3 (0,12)	0,4 (0,16)	0,4 (0,16)	0,5 (0,20)	0,5 (0,20)	0,5 (0,20)	0,5 (0,20)	0,6 (0,24)

The amount of fabric can vary depending on pattern and seam allowance!

## Tools

---

- Sewing machine and/or overlock machine
- Pins and/or fabric clamps
- Scissors
- Measuring tape
- Iron
- Trick marker or tailor's chalk
- Sewing Thread
- Iron and ironing board, possibly ironing aids

You can sew this pattern on any household sewing machine.

The pattern does **NOT** include a seam allowance!

So you have to **add a seam allowance** on all seams!

A seam allowance of 0.75 cm (0,3 inch) when sewing with the overlock sewing machine has proven to be well applicable.

# Instructions

You can find the free video instructions for this pattern on my YouTube channel (german):

[see the video](#)

The snaps at the seams and at the divisions serve as an aid for sewing together, please transfer them all onto the fabric.

First cut all pieces with seam allowance from the fabric and transfer the markings in the side seam with a notch or tailor's chalk.



## Sew side seam

Place one front piece right sides together on a back piece and sew them together at the side seam using an overlock sewing machine or the elasticated stitch of your normal sewing machine.



## Sew cross seam

Lege nun die beiden Hosenteile wieder rechts auf rechts aufeinander und nähe sie mit einer Overlocknähmaschine oder dem elastischen Stich deiner normalen Nähmaschine an der Kreuznaht zusammen.



## Sew inside leg seam

Place the front piece right sides together on the back piece and sew both the side seam and the inside leg seam together with an overlock sewing machine or the elasticated stitch of your normal sewing machine.