

Sew & Explicit patterns



EVA

STYLE 4001

SIZES 4-20
SIZES 16-32

DIFFICULTY ●●●○○

sewexplicitpatterns.com

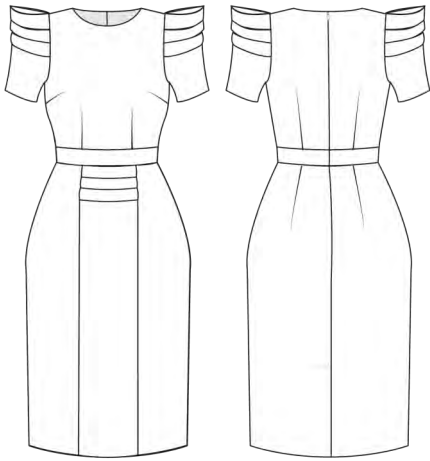
COPYRIGHT POLICY/TERMS AND CONDITIONS

This sewing pattern along with the instruction set is designed and made by SewExplicit Patterns. It is subject to Copyright and is for personal use only. The content herein may not be reproduced, transmitted or shared in any form or by any means- mechanical, electronic, photocopying or otherwise without prior consent of SewExplicit Patterns.

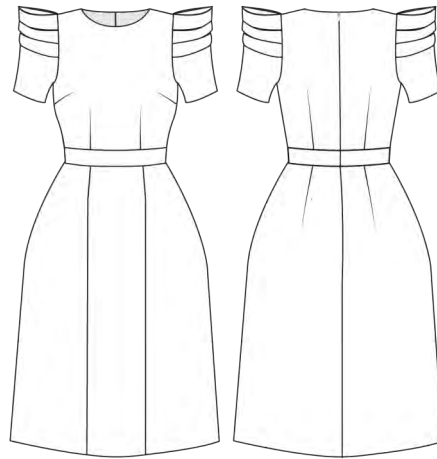
While you are free to sell any number of garments made from this sewing pattern, you cannot transfer or pass on this pattern to your tailors, production staff or other parties. All items must be hand-made by you. Our patterns are not licenced for mass production. By downloading this pattern, whether purchased or free, you have agreed to the terms and conditions.

<https://sewexplicitpatterns.com>

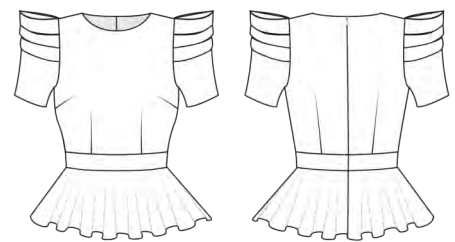
About Eva



VIEW A



VIEW B



VIEW C

Eva features a fitted bodice and has two dress views and one top view. The focal point of the pattern is the statement sleeve which may look draped or give “power sleeve” vibes depending on the fabric used.

- ◆ View A with the pencil cut skirt, features a centre front panel that reflects the sleeve details and a kick pleat at the centre back for ease of movement.
- ◆ View B has slightly flared skirt with a plain and simple centre front panel.
- ◆ Both Views A and B are knee length , about 24-25” (61-64cm) from the waist.
- ◆ View C swaps the knee-length skirt in the other 2 views for a full circle peplum that hits about the hip.
- ◆ Every view is fastened with an invisible zipper that is located at the centre back.
- ◆ The neck edge is finished with facing.
- ◆ The bodice has about 2” (5cm) ease at the bust and zero at the waist. The hip has zero ease for the fitted skirt view while the A-line skirt has about 5” (13cm) ease around the hip.

The Dress style is suitable for day wear and work wear; and the peplum version can dress-up a pair of jeans.

Suggested Fabric

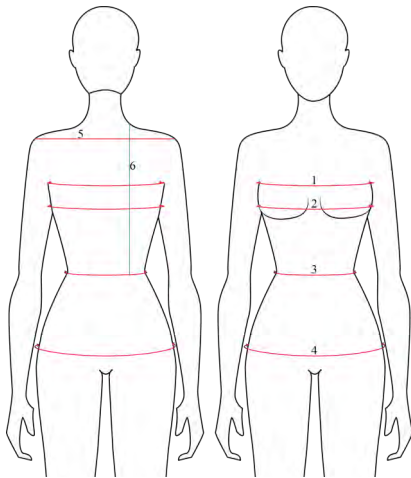
- ◆ **Views A,B,&C-** Very stable medium to heavy weight double knits like Ponte De Roma, Neoprene/Scuba; not having more than 20% stretch and with very good recovery; 250-380gsm (7.37– 11.21 Oz). Using stretchier knit fabrics may require sizing down or additional seam intake.
- ◆ **Views B &C-** Woven fabrics (dress weight) with spandex like stretch sateen, Crepe with stretch, Stretch Denim. View 1 may also be made in woven if the stretch is substantial.

Supplies

- ◆ Main fabric
- ◆ Thread to match
- ◆ 22-24” long invisible zip
- ◆ Fusible interfacing

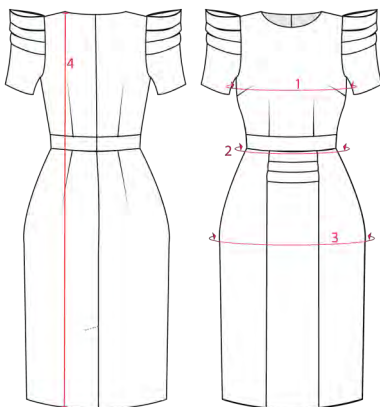
Size Band 'A' Measurements (Imperial)

Body Measurements Chart (inches)



Size	4	6	8	10	12	14	16	18	20
1.Chest/Upper Bust	28	30	32	34	36	38	40	42	44
2.Bust (B-cup)	30	32	34	36	38	40	42	44	46
2.Bust (C-cup)	31	33	35	37	39	41	43	45	47
2.Bust (D-cup)	32	34	36	38	40	42	44	46	48
2.Bust (E-cup)	33	35	37	39	41	43	45	47	49
3.Waist	24	26	28	30	32	34	36	38	40
4.Hip	33	35	37	39	41	43	45	47	49
5.Across Shoulder	13 ¹ / ₂	14	14 ¹ / ₂	15	15 ¹ / ₂	16	16 ¹ / ₂	17	17 ¹ / ₂
6.Back length	15	15 ¹ / ₄	15 ¹ / ₂	15 ³ / ₄	16	16 ¹ / ₄	16 ¹ / ₂	16 ³ / ₄	17
7.Height	65"- 68"	65"- 68"	65"- 68"	65"- 68"	65"- 68"	65"- 68"	65"- 68"	65"- 68"	65"- 68"

Approximate Finished Garment Dimensions (inches)



Size	4	6	8	10	12	14	16	18	20
1.Bust (B-cup)	32	34	36	38	40	42	44	46	48
1.Bust (C-cup)	33	35	37	39	41	43	45	47	49
1.Bust (D-cup)	34	36	38	40	42	44	46	48	50
1. Bust (E-cup)	35	37	39	41	43	45	47	49	51
2.Waist	24	26	28	30	32	34	36	38	40
3.Hip (View A)	33	35	37	39	41	43	45	47	49
3.Hip (View B)	38	40	42	44	46	48	50	52	54
4.Gown length (Views A&B)	38.1	38.4	38.8	39.2	39.5	39.9	40.3	40.7	41.0
4.Top length (View C)	21.2	21.4	21.7	21.9	22.2	22.4	22.7	22.9	23.2

Fabric Required (Yards)

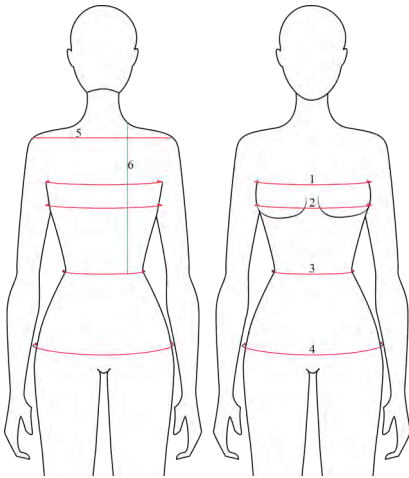
	Sizes 4-8			Sizes 10-14			Sizes 16-20		
	View A	View B	View C	View A	View B	View C	View A	View B	View C
45" wide fabric	1 ³ / ₄	2 ¹ / ₄	1 ¹ / ₂	2 ¹ / ₂	2 ⁵ / ₈	1 ⁵ / ₈	3	3	2
54" wide fabric	1 ³ / ₄	1 ⁷ / ₈	1 ¹ / ₄	1 ⁷ / ₈	2	1 ³ / ₈	2 ¹ / ₄	2 ³ / ₈	1 ⁵ / ₈
60" wide fabric	1 ³ / ₄	1 ³ / ₄	1 ¹ / ₄	1 ³ / ₄	1 ³ / ₄	1 ¹ / ₄	2	2 ¹ / ₄	1 ³ / ₈

NOTE: fabric usage estimates are based on non-directional fabrics i.e. fabrics without nap and obvious design direction. Allow for more fabric when using one-way fabrics, napped and striped fabrics.

NOTE: this pattern is drafted using the imperial system (inches), all conversions to metric are approximates.

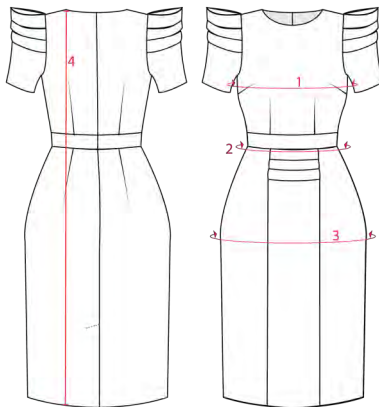
Size Band 'A' Measurements (Metric)

Body Measurements Chart (cm)



Size	4	6	8	10	12	14	16	18	20
1.Chest/Upper Bust	71.1	76.2	81.3	86.4	91.4	96.5	101.6	106.7	111.8
2.Bust (B-cup)	76.2	81.3	86.4	91.4	96.5	101.6	106.7	111.8	116.8
2.Bust (C-cup)	78.7	83.8	88.9	94.0	99.1	104.1	109.2	114.3	119.4
2.Bust (D-cup)	81.3	86.4	91.4	96.5	101.6	106.7	111.8	116.8	121.9
2.Bust (E-cup)	83.8	88.9	94.0	99.1	104.1	109.2	114.3	119.4	124.5
3.Waist	61.0	66.0	71.1	76.2	81.3	86.4	91.4	96.5	101.6
4.Hip	83.8	88.9	94.0	99.1	104.1	109.2	114.3	119.4	124.5
5.Across Shoulder	34.3	35.6	36.8	38.1	39.4	40.6	41.9	43.2	44.5
6.Back length	38.1	38.7	39.4	40.0	40.6	41.3	41.9	42.5	43.2
7.Height	165-172	165-172	165-172	165-172	165-172	165-172	165-172	165-172	165-172

Approximate Finished Garment Dimensions (cm)



Size	4	6	8	10	12	14	16	18	20
1.Bust (B-cup)	81	86	91	97	102	107	112	117	122
1.Bust (C-cup)	84	89	94	99	104	109	114	119	124
1.Bust (D-cup)	86	91	97	102	107	112	117	122	127
1.Bust (E-cup)	89	94	99	104	109	114	119	124	130
2.Waist	61	66	71	76	81	86	91	97	102
3.Hip (View A)	84	89	94	99	104	109	114	119	124
3.Hip (View B)	97	102	107	112	117	122	127	132	137
4.Gown length (Views A&B)	97	98	99	99	100	101	102	103	104
4.Top length (View C)	54	54	55	56	56	57	58	58	59

Fabric Required (Meters)

	Sizes 4-8			Sizes 10-14			Sizes 16-20		
	View A	View B	View C	View A	View B	View C	View A	View B	View C
114cm wide fabric	1.63	2.07	1.32	2.27	2.42	1.49	2.75	2.74	1.87
135cm wide fabric	1.60	1.66	1.17	1.69	1.85	1.27	2.10	2.20	1.45
150cm wide fabric	1.55	1.57	1.17	1.61	1.63	1.16	1.87	2.09	1.30

NOTE: fabric usage estimates are based on non-directional fabrics i.e. fabrics without nap and obvious design direction. Allow for more fabric when using one-way fabrics, napped and striped fabrics.

NOTE: this pattern is drafted using the imperial system (inches), all conversions to metric are approximates.