

SewExplicit
patterns



DAISY

STYLE 2006

SIZES 6-20

SKILL LEVEL ●●●○○○

sewexplicitpatterns.com

COPYRIGHT POLICY/TERMS AND CONDITIONS

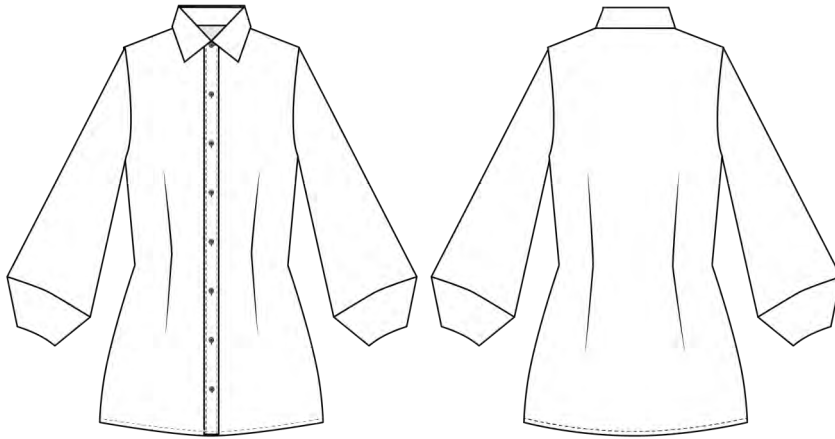
This sewing pattern along with the instruction set is designed and made by SewExplicit Patterns. It is subject to Copyright and is for personal use only. The content herein may not be reproduced, transmitted or shared in any form or by any means- mechanical, electronic, photocopying or otherwise without prior consent of SewExplicit Patterns.

While you are free to sell any number of garments made from this sewing pattern, you cannot transfer or pass on this pattern to your tailors, production staff or other parties. All items must be handmade by you. Our patterns are not licenced for mass production.

By downloading this pattern, whether purchased or free, you have agreed to the terms and conditions.

<http://sewexplicitpatterns.com>.

About Daisy



Daisy is a shirt with simplified details. It features a neckband and collar cut-in-one to simplify construction and the traditional shirt sleeve with placket is replaced with an easy to sew, edgy three-quarter length lantern sleeves. The shirt placket is also cut-in-one with the front and merely folded. The cut of the shirt is slightly fitted with waist fitting darts to shape the shirt silhouette.

The shirt can be made in a variety of fabrics and can be worn on jeans or styled as a work wear by pairing with a smart pair of trousers or a pencil skirt.

Suggested Fabric

Light to medium weight woven fabrics without stretch, shirting fabric, organza, wax print (Ankara) etc.

Supplies

- ◆ Main fabric
- ◆ Thread to match
- ◆ 7-8 units of 1/2" diameter shirt buttons
- ◆ Fusible interfacing

Measurements

Body Measurements Chart (inches)

Size	6	8	10	12	14	16	18	20
Bust	32	34	36	38	40	42	44	46
Waist	26	28	30	32	34	36	38	40
Hip	35	37	39	41	43	45	47	49
CB length	15 ¹ / ₄	15 ¹ / ₂	15 ³ / ₄	16	16 ¹ / ₄	16 ¹ / ₂	16 ³ / ₄	17

Apprx. Finished Garment Dimensions (inches)

Size	6	8	10	12	14	16	18	20
Bust	35	37	39	41	43	45	47	49
Waist	28	30	32	34	36	38	40	42
Hip	38	40	42	44	46	48	50	52
length	28 ⁵ / ₈	29	29 ³ / ₈	29 ³ / ₄	30 ¹ / ₄	30 ¹ / ₂	30 ⁷ / ₈	31 ¹ / ₄
Slv lgt	19 ¹ / ₄	19 ¹ / ₂	19 ³ / ₄	20	20 ¹ / ₄	20 ¹ / ₂	20 ³ / ₄	21

Main Fabric Required (Yards)

	6	8	10	12	14	16	18	20
By 45"	2 ³ / ₈	2 ³ / ₈	2 ³ / ₈	2 ¹ / ₂	2 ¹ / ₂	2 ⁵ / ₈	2 ³ / ₄	2 ³ / ₄
By 54"	1 ⁷ / ₈	2	2	2	2	2 ¹ / ₄	2 ³ / ₈	2 ³ / ₈
By 60"	1 ⁷ / ₈	1 ⁷ / ₈	2	2	2	2	2	2

Body Measurements Chart (cm)

Size	6	8	10	12	14	16	18	20
Bust	81.3	86.4	91.4	96.5	101.6	106.7	111.8	116.8
Waist	66.0	71.1	76.2	81.3	86.4	91.4	96.5	101.6
Hip	88.9	94.0	99.1	104.1	109.2	114.3	119.4	124.5
CB length	38.7	39.4	40.0	40.6	41.3	41.9	42.5	43.2

Approximate Finished Garment Dimensions (cm)

Size	6	8	10	12	14	16	18	20
Bust	88.9	94.0	99.1	104.1	109.2	114.3	119.4	124.5
Waist	71.1	76.2	81.3	86.4	91.4	96.5	101.6	106.7
Hip	96.5	101.6	106.7	111.8	116.8	121.9	127.0	132.1
length	72.7	73.7	74.6	75.6	76.5	77.5	78.4	79.4
Slv lgt	48.9	49.5	50.2	50.8	51.4	52.1	52.7	53.3

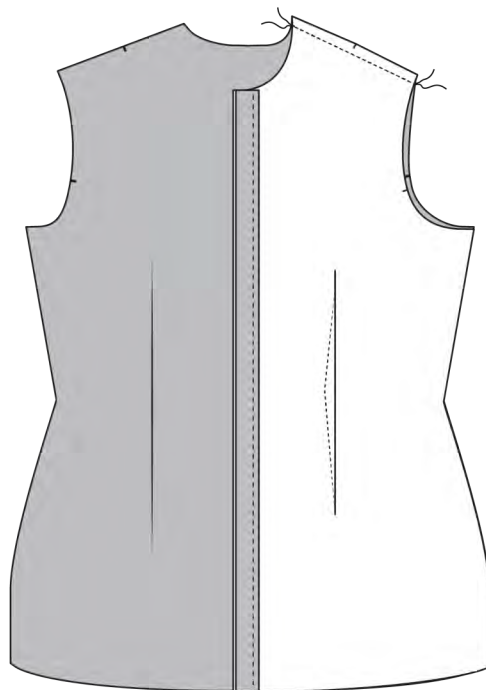
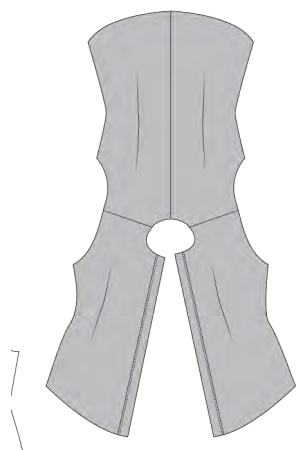
Main Fabric Required (Metres)

	6	8	10	12	14	16	18	20
By 114cm	2.2	2.2	2.2	2.3	2.3	2.4	2.5	2.5
By 135cm	1.8	1.8	1.8	1.8	1.8	2.0	2.2	2.2
By 150cm	1.8	1.8	1.8	1.8	1.8	1.8	1.8	1.8

NOTE: this pattern is drafted using the imperial system (inches), all conversions to metric are approximates.

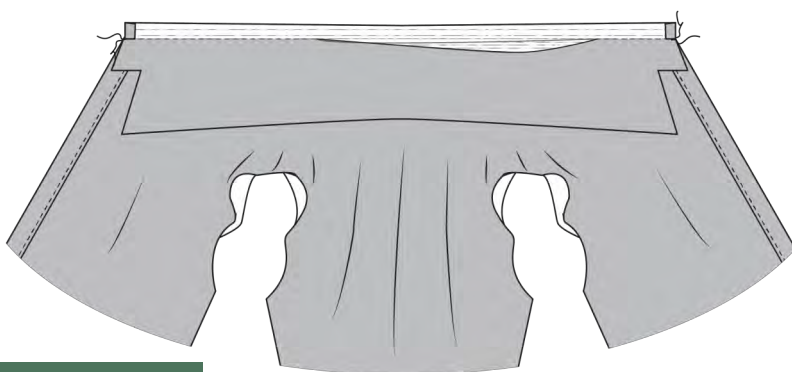
7. Join Shirt at Shoulder seams

With right sides facing each other, and notches matched, join the back shirt to the front at shoulders. Open the seam flat or press towards the back if fabric is not bulky.



8. Attach the collar to shirt neckline

Apply the collar to the neckline of shirt, sewing only the under collar to the neckline, and keeping the upper/inner collar away.



9. Lap the Upper/ Inner Collar

Working from the inside of shirt, Lap the upper/inner collar unto the just sewn seam (at neckline) and top stitch/stich-in-the-ditch for a clean finish.

