

# Lipsia<sup>©</sup>



## ★Instructions Baby Dress „Lipsia“:

The pattern contains two variants.

**Lipsia (A):** Dress with lined yoke, contrast fabric ties and ruffled skirt.  
With photo instructions.

**Suggested fabrics:** cotton, lightweight denim, muslin or baby corduroy.

Before cutting out the garment pieces, add seam and hem allowances to the original contours, seam 1 cm / 0 25/64 in. and hem 3 cm / 1 3/16 in. Cut when double layer of fabric, right side inside. Fabric consumption with a fabric width of 1.40 meters / 40<sup>15</sup>/16 in.

| Size    | Fabric length                   | Lining length for lined yoke and ties |
|---------|---------------------------------|---------------------------------------|
| 1M/3M   | 40 cm / 15 <sup>3</sup> /4 in   | 30 cm / 11 <sup>13</sup> /16 in       |
| 6M/9M   | 50 cm / 19 <sup>11</sup> /16 in | 30 cm / 11 <sup>13</sup> /16 in       |
| 12M/18M | 55 cm / 21 <sup>21</sup> /32 in | 30 cm / 11 <sup>13</sup> /16 in       |
| 2Y/3Y   | 60 cm / 23 <sup>5</sup> /8 in   | 30 cm / 11 <sup>13</sup> /16 in       |

**Fusible web (Lightweight)** for ties 15 cm / 29/32 in

The dress can be combined with the short bloomers "Elisa" by Patternforkids.

**Clara (B):** Dress with lined yoke, straps to button and ruffled skirt. Without photo instructions.

## Important for e-book:

"Page, Sizing and Handling" should be set to "Actual size". No scaling is required to print.

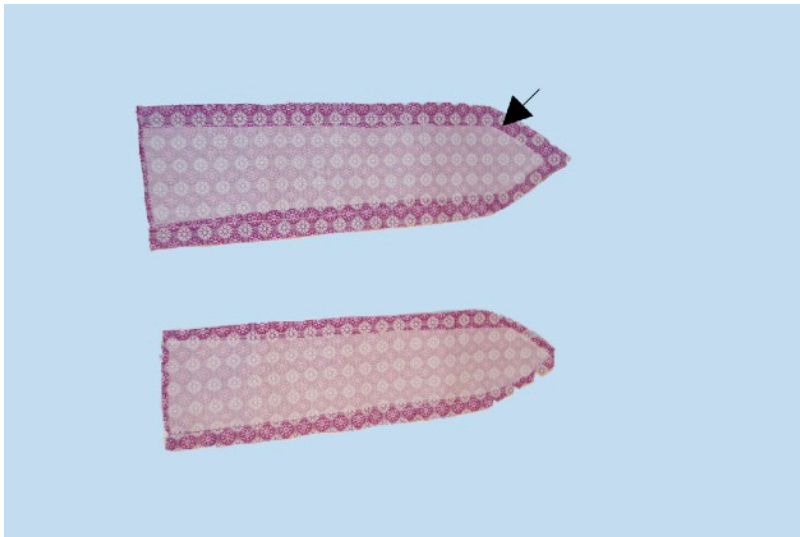
Printing orientation should be set to "Portrait." Please check that the measure square on the print is 5 cm / 1<sup>31</sup>/32 in



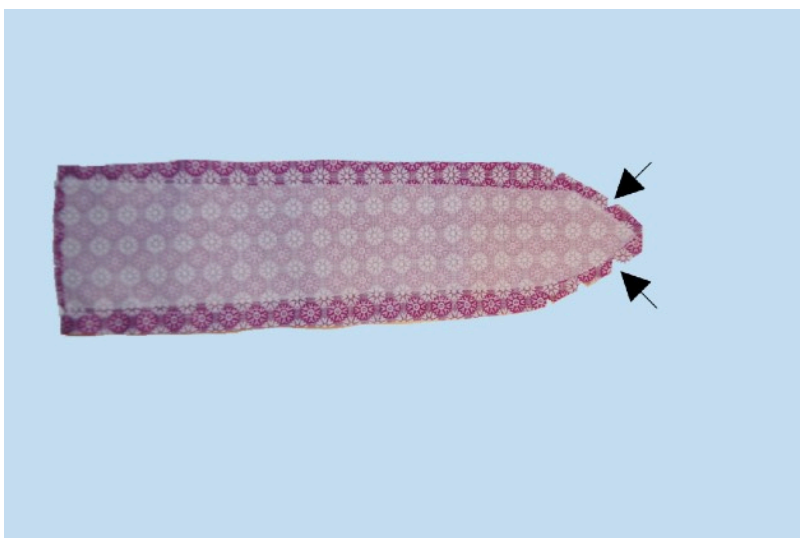
**Please note:**

The instructions are shown in two different sorts of fabrics.

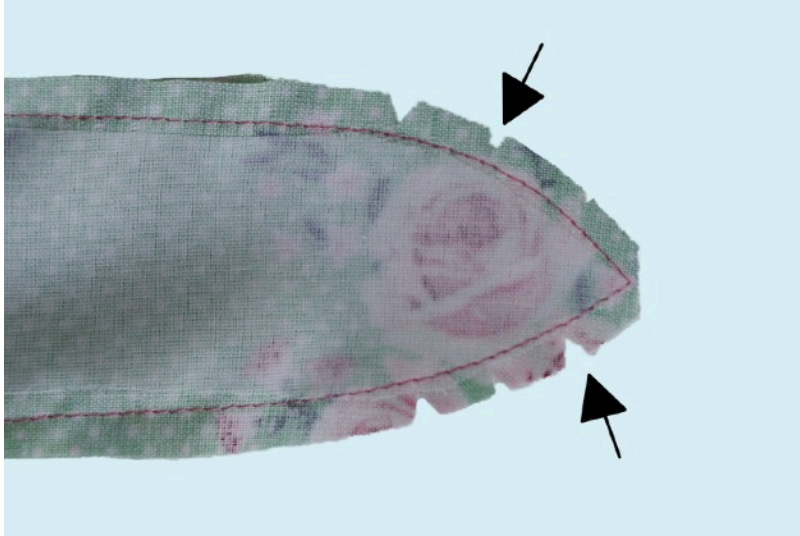
Cut interfacing for bow ties and fuse them in place.



Pin bow ties together, right sides facing and stitch. Leave bottom edge open for turning tie right side out.



Trim and taper seam allowances and cut the corner.



**Please note:**

The instructions are shown in two different sorts of fabrics.



Turn bows right side out and press.

A wooden spoon may be helpful.

