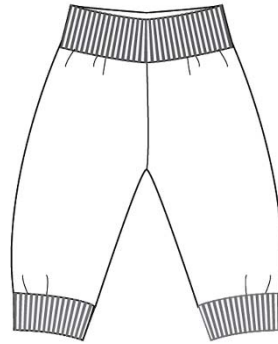


LUCCA ©



Cosy reversible pants with cuffs at waistband and legs.

Cm

Size (Body height)	Fabric length	Fabric length
56/62	35 cm	35 cm
68/74	45 cm	45 cm
80/86	50 cm	50 cm
92/98	55 cm	55 cm

Inches

Size (Body height)	Fabric length	Fabric length
22.05/24.41	13.78	13.78
26.77/29.13	17.72	17.72
31.5/33.86	19.69	19.69
36.22/38.58	21.65	21.65

Fabric requirements: 1,40m width/ 55.12 in. width

Add seam allowances (1,5 cm/ 0.59 in.) to the original contours. No hem allowance required, because pants is totally lined. Lay out the pattern pieces on a double layer of fabric (right sides facing).

Recommended fabrics: Fleece, velour knits or interlock knits

Lining: Jersey knits, Interlock knits, velour knits

Important for e-book:

“Page, Sizing and Handling” should be set to “Actual size”. No scaling is required while printing. Printing orientation should be set to “Auto portrait/ Landscape”.

Please check the measure square 5 cm to 5 cm (1.97 in. to 1.97 in.) matches your printing.



Please note:

The instructions are shown in two different sorts of fabrics.



Bottom edges of legs:

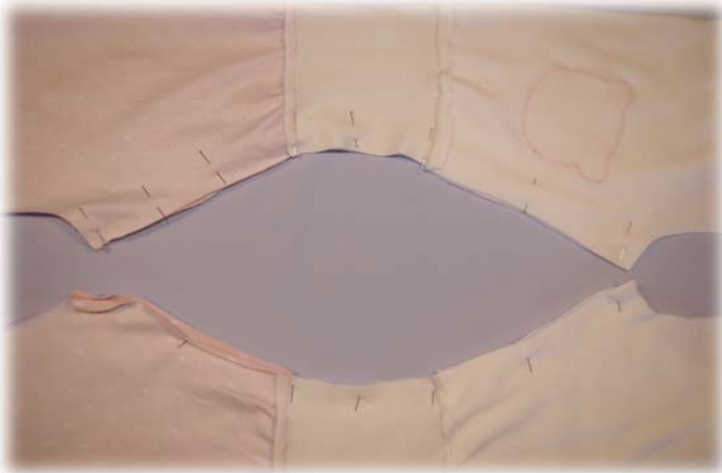
Pin bottom leg cuffs to the bottom edges of legs, right sides facing, stretching cuffs slightly as you sew.



Pin other sides of cuffs to the bottom lining's hem (mind front and back centre). Stretching cuffs as you sew as well.



Fold and press seam allowances toward pants.



Joining:

Pin leg inseams together, right sides facing and stitch. Leave approx. 5cm opening in one lining inseam for turning pants right side out.

