

Size Guide & Supplies

Savannah Dress Size Chart

	Small (8-10)	Medium (12-14)	Large (16-18)	X-Large (20-22)
Bust	85-91	92-100	100-115	115-130
Waist	65-70	70-80	80-90	91-105
Hip	95-101	102-110	110-120	120-140

Fabric & Supplies:

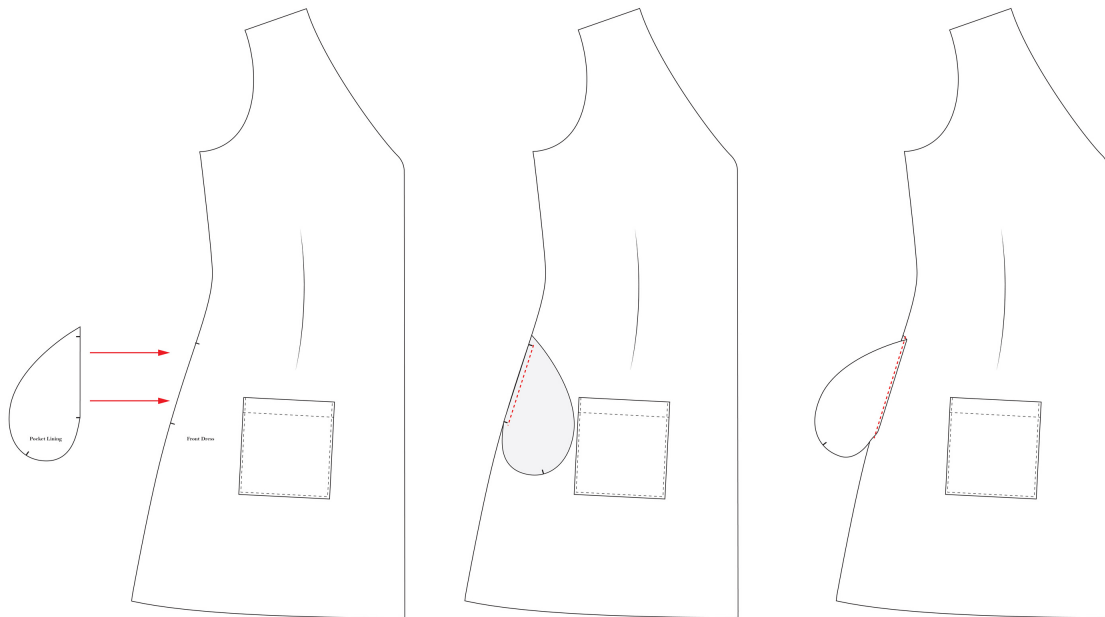
I designed this dress inspired by linen, but you can also use linen blends and cotton types. The pineapple and floral version of this dress are made from a linen and cotton blend, while the navy is made from 100% linen. Depending on your size, you will need between 2.20m and 3m using 1.5m wide fabric, please work out your fabric requirements to fit your size and chosen fabric width.

The back and front facing pieces require a fusible interfacing. I suggest something light weight with good drape, like a weft interfacing.

You will also need 8 buttons and I feel a large button, with a 25mm diameter, best suits this style of dress.

*Optional - Instead of finishing the back, front and hem facings as per the instructions, you could also use bias binding. You can see an example of this on my navy Savannah, below and I also include this in the sewing tutorial

2. Pin the pocket bag linings to the front dress pieces. Stitch then finger press seam toward pocket lining and understitch.



3. Pin the pocket bag linings with the sewn on facing to the back dress pieces. Stitch then finger press seam toward pocket lining and understitch.

