

Sewing Instructions



Amalfi

Amalfi

Material:

- Jersey-fabric, meshsafe 0,7 meters to 1,0 meters 150 cm wide (version without direction)
- Jersey-fabric, meshsafe 1meter to 1,3 meters 150 cm wide (version with direction)
- yarn

Pattern Preparations:

- Glue together the printed pages according to the pattern pieces.
- then cut out these pattern pieces in their entirety.
- All pattern pieces exclude seam allowance.
- The seam allowance constitutes everywhere 1 cm, in the hemline no seam allowance if you leave it open or sew a rollhem with the overlock machine.

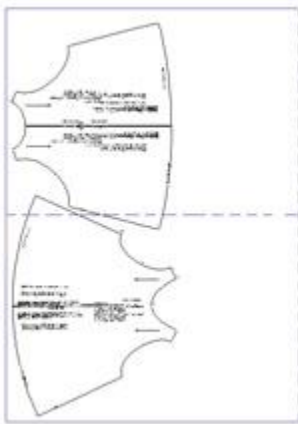


Illustration 1

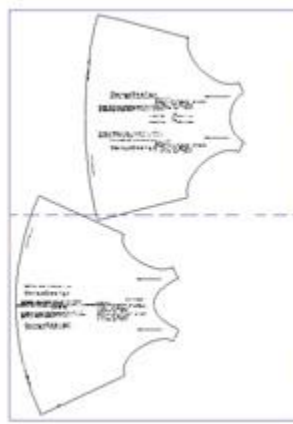


Illustration 1a (with direction)

Cutting out:

Now left side up match the fabric onto the table and place the pattern pieces as pictured, means both hemline versions. (Illustration 1)

Indicate the seam lines, markings and outlines with tailor's chalk.

Then cut along the outlines, indicate the markings with 0,5 cm cuts. (Illustration 2)



Illustration 2



Illustration 3



Illustration 4



Illustration 5



Illustration 6



Illustration 7



Illustration 8



Illustration 8



Illustration 10



Illustration 11

Sewing:

If you don't use an overlock machine, neaten all edges with the overlock machine or zigzagstitch if the fabric is not meshsafe.

If you sew with the overlock, change it to safety-stitch and sew with it.

Close the shoulder seams and iron the seam allowances apart or flat.. (Illustration 3-4)

Close the side seam and iron the seam allowances apart or flat. (Illustration 5-6)

Change the overlock machine to 1 needle overlock seam and neaten the neckline and armholes with it. (Illustration 7)

Fold the neckline and armhole edges inwards and topstitch with the triple zigzagstitch. (Illustration 8-10)

Change the overlock machine to rollhem and neaten the hemline. (Illustration 11)

Or, without an overlock-machine, leave open the edges because the jersey is meshsafe or iron 1 cm inwards and topstitch with the triple zigzagstitch.

Finally iron your new shirt Amalfi!

DongoDesign

SCHNITTENTWICKLUNG IM SCHATTEN DER NAHT ...

Bettina Dongowski · Berger Straße 19 · 60316 Frankfurt am Main · Tel.: +49 (0)69/ 43 80 97 · E-Mail: dongo@dongodesign.de
web: www.dongodesign.de



Done!