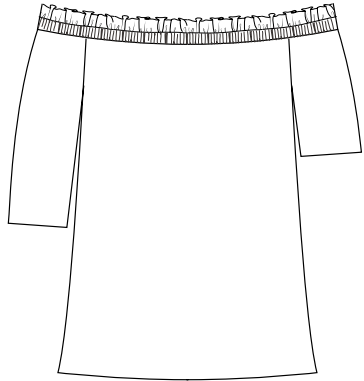
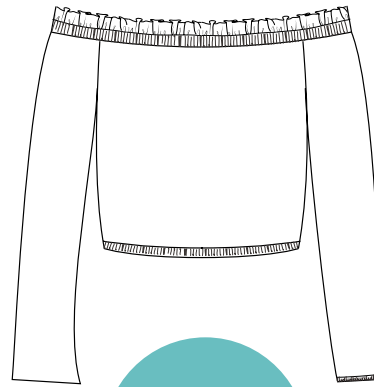


MJ
#3102

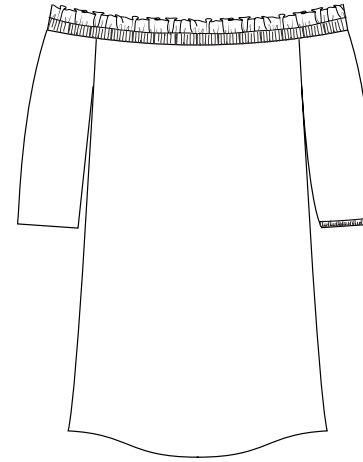
Paisley Shirt



VIEW
A



VIEW
B



VIEW
C

VIEW
C



3 Lengths: Shirt, Cropped, Tunic

5 Sleeves: Short (hemmed), Half (hemmed or gathered), Long (hemmed or gathered)

www.millicentjoy.com

MILLICENT JOY
SEWING PATTERNS

CHOOSING YOUR CORRECT SIZE



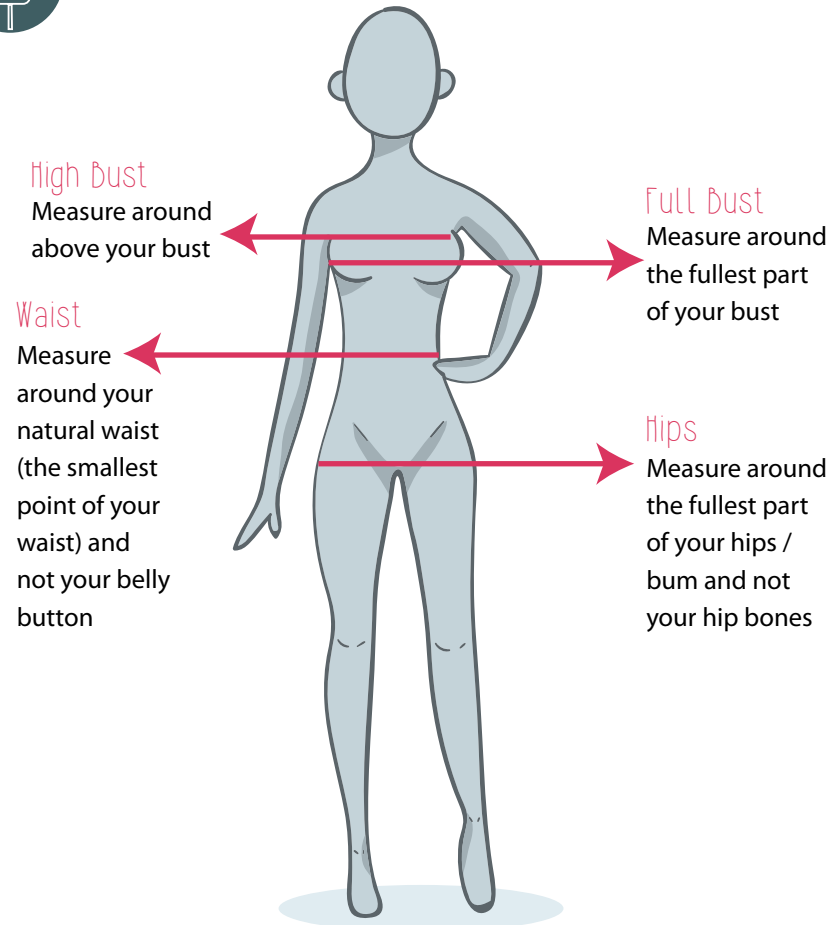
INTENDED FIT

This shirt is intended to have a drapey fit. Choose your size based on your **BUST** measurement and grade out for your waist and hips if necessary.

More information on how to grade out for your measurements can be found in the Custom Fit section of this PDF.



WHERE TO MEASURE



Choose your size based on your BUST measurement.

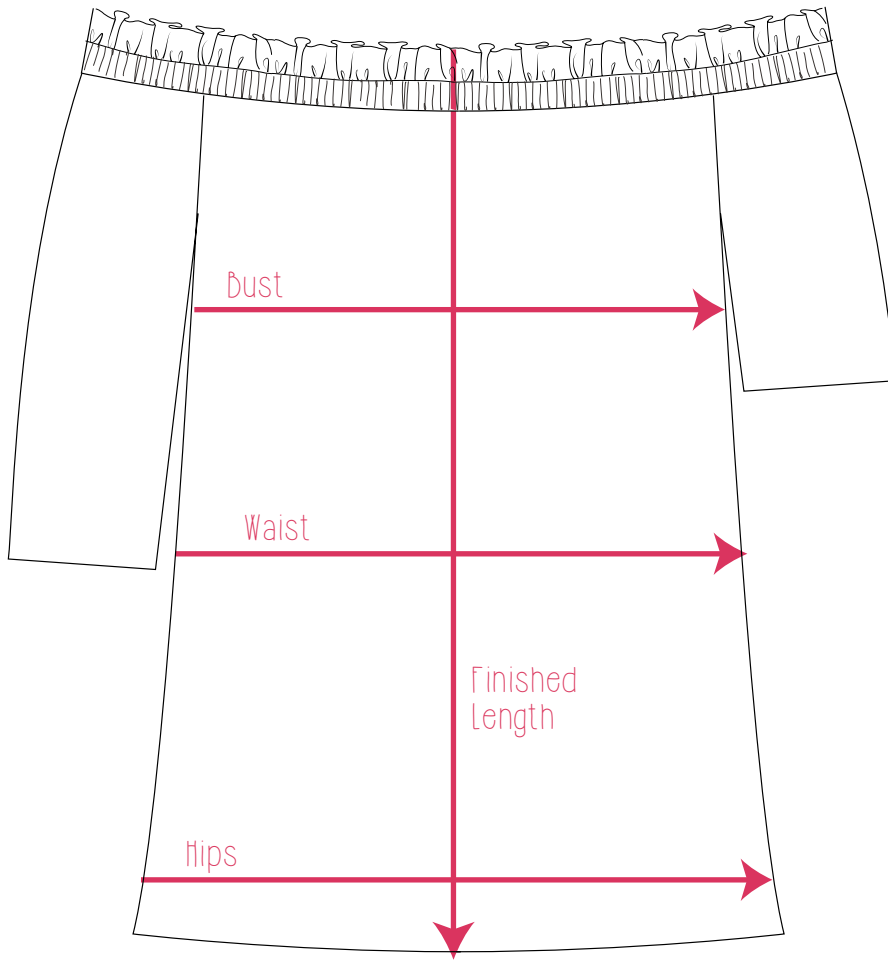


SIZE CHART Rounded to the nearest 0.25" and 0.5 cm

Size	High Bust	Full Bust	Waist	Hips
0	28" 71cm	30" 76cm	23.5" 60cm	33" 84cm
1	29.5" 75cm	31.5" 80cm	25" 64cm	34.5" 88cm
2	31" 79cm	33" 84cm	26.75" 68cm	36.25" 92cm
3	32.5" 83cm	34.5" 88cm	28.25" 72cm	37.75" 96cm
4	34" 87cm	36.25" 92cm	30" 76cm	39.25" 100cm
5	35.5" 91cm	37.75" 96cm	31.5" 80cm	41" 104cm
6	37.75" 95cm	39.5" 100cm	33" 84cm	42.5" 108cm
7	39" 99cm	41" 104cm	34.75" 88cm	44" 112cm
8	40.5" 103cm	42.5" 108cm	36.25" 92cm	45.75" 116cm
9	42" 107cm	44" 112cm	37.75" 96cm	47.25" 120cm
10	43.75" 111cm	45.75" 116cm	39.25" 100cm	49" 124cm
11	45.25" 115cm	47.25" 120cm	41" 104cm	50.5" 128cm
12	46.75" 119cm	49" 124cm	42.5" 108cm	52" 132cm



FINISHED GARMENT MEASUREMENTS: SHIRT LENGTH



Rounded to the nearest 0.25" (0.5 cm)



FINISHED GARMENT MEASUREMENTS

Size	Length	Bust	Waist	Hips
0	20"	43"	37.25"	37.25"
	51cm	109.5cm	94.5cm	94.5cm
1	20"	44.5"	39"	39"
	51cm	113cm	99cm	99cm
2	20.25"	46"	41"	41"
	51.5cm	117cm	104cm	104cm
3	20.5"	47.5"	42.5"	43"
	52cm	121cm	108cm	109cm
4	20.75"	49"	44.5"	45"
	52.5cm	125cm	112cm	114cm
5	21"	50.5"	46.25"	46.75"
	53cm	128.5cm	117cm	118.5cm
6	21.25"	52"	48"	48.75"
	54cm	132cm	122cm	124cm
7	21.5"	53.5"	50"	50.75"
	54.5cm	136cm	126.5cm	129cm
8	21.5"	55"	51.75"	52.5"
	54.5cm	140cm	131.5cm	133.5cm
9	21.75"	56.5"	53.75"	54.75"
	55cm	144cm	136cm	139cm
10	21.75"	58"	55.75"	56.75"
	55cm	148cm	141.5cm	144cm
11	22"	59.5"	57.75"	58.75"
	56cm	151.5cm	145.5cm	149cm
12	22.25"	61"	59.25"	60.5"
	56.5cm	155.5cm	150cm	154cm

Contents

Printing

Size Chart

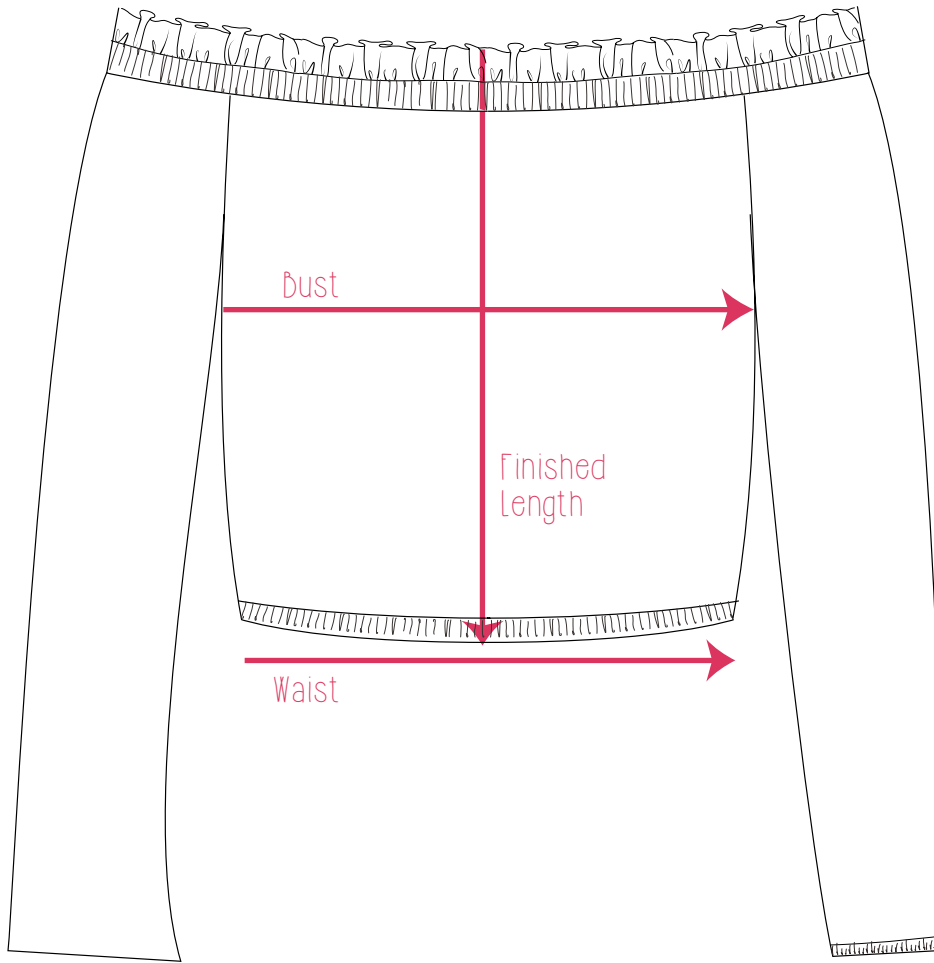
Supplies

Cut list

Custom fit

Get Sewing

FINISHED GARMENT MEASUREMENTS: CROPPED LENGTH



Rounded to the nearest 0.25" (0.5 cm)



FINISHED GARMENT MEASUREMENTS

Size	Length	Bust	Waist
0	13.75"	43"	24"
	35cm	109.5cm	61cm
1	14"	44.5"	25.5"
	35.5cm	113cm	65cm
2	14"	46"	27"
	35.5cm	117cm	69cm
3	14"	47.5"	28.5"
	35.5cm	121cm	73cm
4	14.25"	49"	30"
	36cm	125cm	76cm
5	14.25"	50.5"	31.5"
	36cm	128.5cm	80cm
6	14.25"	52"	33"
	36cm	132cm	84cm
7	14.5"	53.5"	34.5"
	37cm	136cm	88cm
8	14.5"	55"	36"
	37cm	140cm	91cm
9	14.5"	56.5"	37.5"
	37cm	144cm	95cm
10	14.5"	58"	39"
	37cm	148cm	99cm
11	14.75"	59.5"	40.5"
	37.5cm	151.5cm	103cm
12	14.75"	61"	42"
	37.5cm	155.5cm	107cm

Contents

Printing

Size Chart

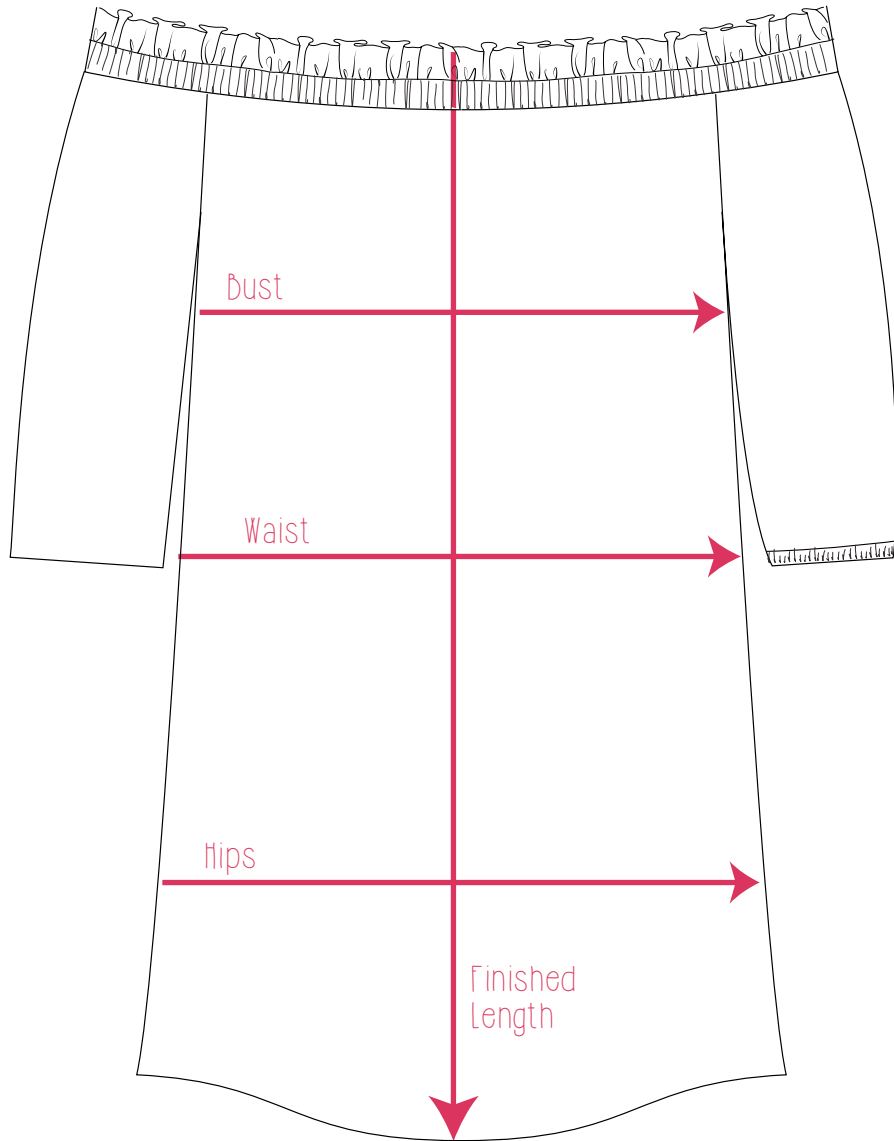
Supplies

Cut list

Custom fit

Get Sewing

FINISHED GARMENT MEASUREMENTS: TUNIC LENGTH



Rounded to the nearest 0.25" (0.5 cm)



FINISHED GARMENT MEASUREMENTS

Size	Length	Bust	Waist	Hips
0	29.25"	43"	37.25"	37.25"
	74cm	109.5cm	94.5cm	94.5cm
1	29.5"	44.5"	39"	39"
	75cm	113cm	99cm	99cm
2	29.75"	46"	41"	41"
	75.5cm	117cm	104cm	104cm
3	30"	47.5"	42.5"	43"
	76cm	121cm	108cm	109cm
4	30"	49"	44.5"	45"
	76cm	125cm	112cm	114cm
5	30.25"	50.5"	46.25"	46.75"
	76.5cm	128.5cm	117cm	118.5cm
6	30.25"	52"	48"	48.75"
	76.5cm	132cm	122cm	124cm
7	30.5"	53.5"	50"	50.75"
	77.5cm	136cm	126.5cm	129cm
8	30.75"	55"	51.75"	52.5"
	78cm	140cm	131.5cm	133.5cm
9	30.75"	56.5"	53.75"	54.75"
	78cm	144cm	136cm	139cm
10	31"	58"	55.75"	56.75"
	78.5cm	148cm	141.5cm	144cm
11	31.25"	59.5"	57.75"	58.75"
	79cm	151.5cm	145.5cm	149cm
12	31.5"	61"	59.25"	60.5"
	80cm	155.5cm	150cm	154cm

Contents

Printing

Size Chart

Supplies

Cut list

Custom fit

Get Sewing

LIST OF SUPPLIES NEEDED



RECOMMENDED FABRICS

Light weight woven fabric with a good drape. Examples include: chiffon, crepe, rayon challis, voile, and lightweight linen.

You may also use a light weight knit, but the fit will be looser than originally intended. I would also recommend using fusible interfacing for the elastic casing / ruffle.



OTHER NOTIONS NEEDED

- 3/4" elastic

Depending on which option you sew, you will also need:

- 1/2" elastic (cropped version)
- 1/4" elastic (gathered sleeves)



ABOUT THE FABRIC REQUIREMENTS

The chart of fabric requirements below is based off of 60" (150cm) wide bolts of fabric.

It also does not take into account fabric shrinkage or fabrics with directional prints.



PRE-WASHING YOUR FABRIC

It is very important to pre-wash your fabric how you will wash it once you have sewn the garment.

Pre-washing your fabric will prevent the garment from shrinking after you have sewn it.



FABRIC REQUIREMENTS

Size	0	1	2	3	4	5	6	7	8	9	10	11	12
Cropped	0.5 yards (45cm)						1.25 yards (115cm)						
Shirt	0.75 yards (70cm)						1.5 yards (135cm)						
Tunic	1 yard (90cm)						1.75 yards (160cm)						
Short + Half Sleeves	Add 0.5 yards (45cm)						No Extra						
Long Sleeves	Add 0.75 yard (70cm)						No Extra						

Contents

Printing

Size Chart

Supplies

Cut list

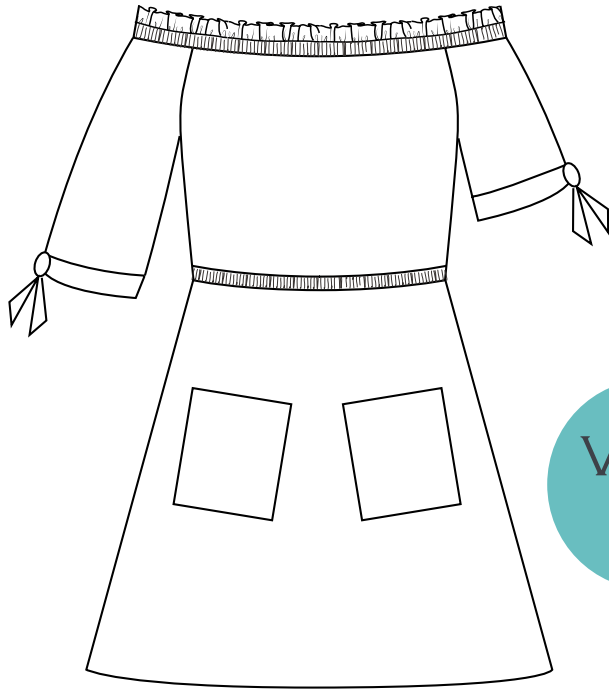
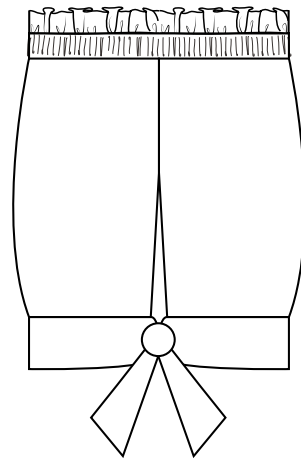
Custom fit

Get Sewing

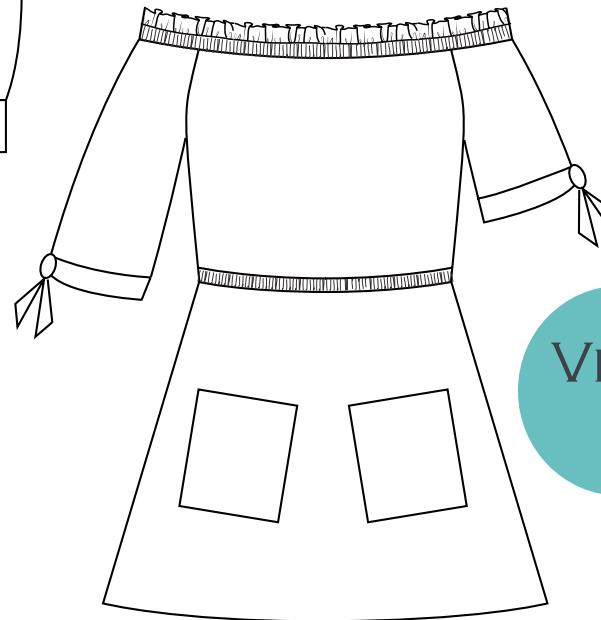
MJ
#3102b

Paisley Shirt Expansion

TIED
SLEEVE



VIEW
A



VIEW
B

VIEW
B



www.millicentjoy.com

MILLICENT JOY
SEWING PATTERNS

CHOOSING YOUR CORRECT SIZE



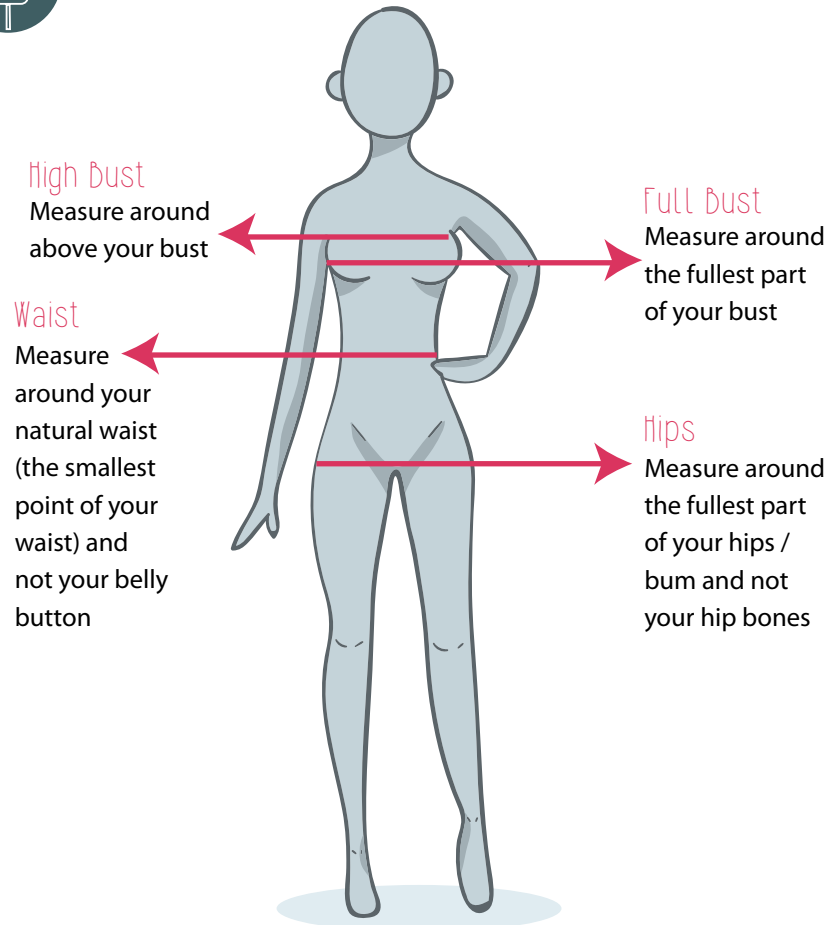
INTENDED FIT

This dress is intended to have a drapey fit. Choose the size of your skirt based on your **HIP** measurement. The bodice in the original Paisley Shirt is selected by your bust measurement. Both the bodice and the skirt will be blended to your waist measurement if necessary.

More information on how to grade out for your measurements can be found in the Custom Fit section of this PDF.



WHERE TO MEASURE



SIZE CHART

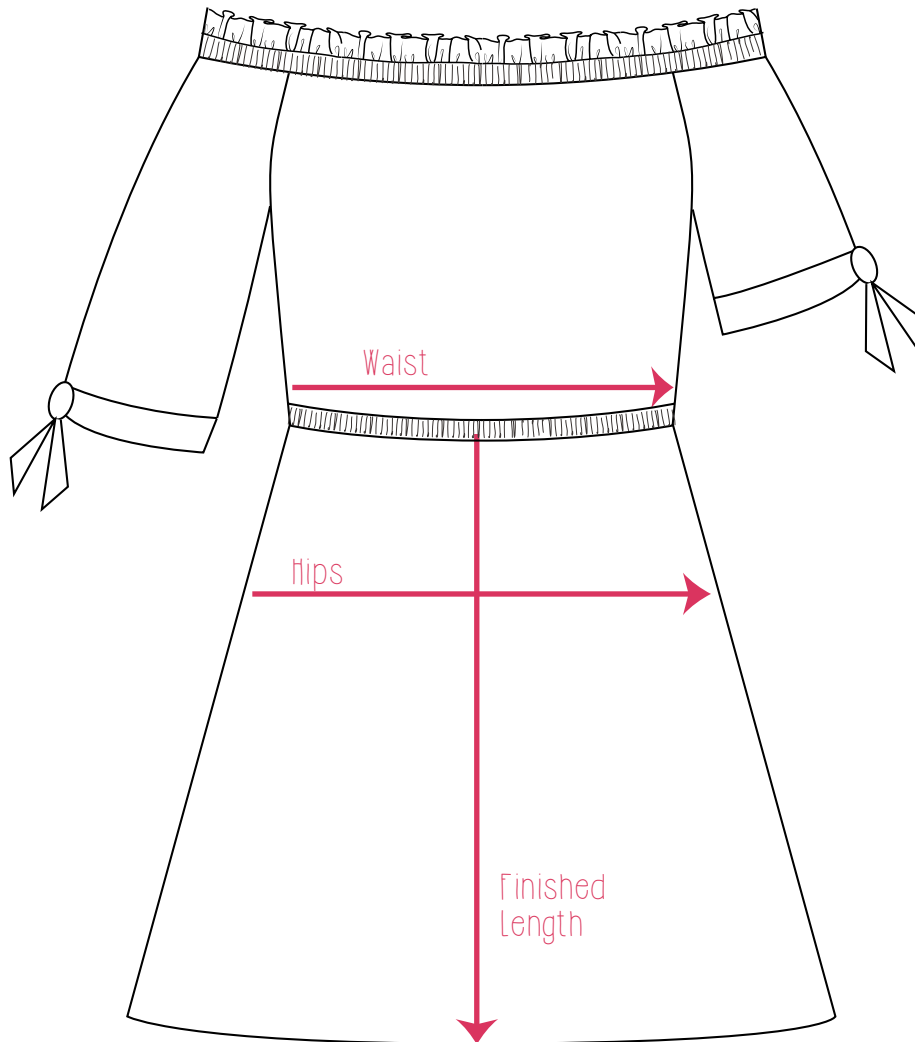
Size	High Bust	Full Bust	Waist	Hips
0	28" 71cm	30" 76cm	24" 60cm	33" 84cm
1	29.5" 75cm	31.5" 80cm	25.5" 64cm	34.5" 88cm
2	31" 79cm	33" 84cm	27" 68cm	36" 92cm
3	32.5" 83cm	34.5" 88cm	28.5" 72cm	37.5" 96cm
4	34" 87cm	36" 92cm	30" 76cm	39" 100cm
5	35.5" 91cm	37.5" 96cm	31.5" 80cm	40.5" 104cm
6	37" 95cm	39" 100cm	33" 84cm	42" 108cm
7	38.5" 99cm	40.5" 104cm	34.5" 88cm	43.5" 112cm
8	40" 103cm	42" 108cm	36" 92cm	45" 116cm
9	41.5" 107cm	43.5" 112cm	37.5" 96cm	46.5" 120cm
10	43" 111cm	45" 116cm	39" 100cm	48" 124cm
11	44.5" 115cm	46.5" 120cm	40.5" 104cm	49.5" 128cm
12	46" 119cm	48" 124cm	42" 108cm	51" 132cm

Skirt Pieces = HIP Measurement. Sleeve Pieces = Bust Measurement.



FINISHED GARMENT MEASUREMENTS: DRESS

See Page 7 of the Paisley Shirt Pattern PDF for finished bust measurements.



Rounded to the nearest 0.25" (0.5 cm)



FINISHED GARMENT MEASUREMENTS

Size	Length Mini	Length Knee	Waist	Hips
0	17.25"	21.25"	24"	40.25"
	44cm	54cm	61cm	102.25cm
1	17.25"	21.25"	25.5"	42"
	44cm	54cm	65cm	107cm
2	17.25"	21.25"	27"	44"
	44cm	54cm	69cm	112cm
3	17.25"	21.25"	28.5"	45.75"
	44cm	54cm	73cm	116cm
4	17.25"	21.25"	30"	47.75"
	44cm	54cm	76cm	121cm
5	17.25"	21.25"	31.5"	49.75"
	44cm	54cm	80cm	126cm
6	17.25"	21.25"	33"	51.5"
	44cm	54cm	84cm	131cm
7	17.25"	21.25"	34.5"	53.25"
	44cm	54cm	88cm	135cm
8	17.25"	21.25"	36"	55.25"
	44cm	54cm	91cm	140cm
9	17.25"	21.25"	37.5"	57.25"
	44cm	54cm	95cm	145.5cm
10	17.25"	21.25"	39"	59"
	44cm	54cm	99cm	150cm
11	17.25"	21.25"	40.5"	60.75"
	44cm	54cm	103cm	154.5cm
12	14.75"	61"	42"	62.75"
	37.5cm	155.5cm	107cm	159.5cm

Contents

Printing

Size Chart

Supplies

Cut list

Custom fit

Get Sewing

LIST OF SUPPLIES NEEDED



RECOMMENDED FABRICS

Light weight woven fabric with a good drape. Examples include: chiffon, crepe, rayon challis, voile, and lightweight linen.

You may also use a light weight knit, but the fit will be looser than originally intended. I would also recommend using fusible interfacing for the pockets.



OTHER NOTIONS NEEDED

- 3/4" elastic



ABOUT THE FABRIC REQUIREMENTS

The chart of fabric requirements below is based off of 60" (150cm) wide bolts of fabric.

It also does not take into account fabric shrinkage or fabrics with directional prints.



PRE-WASHING YOUR FABRIC

It is very important to pre-wash your fabric how you will wash it once you have sewn the garment.

Pre-washing your fabric will prevent the garment from shrinking after you have sewn it.



FABRIC REQUIREMENTS (IN ADDITION TO THE FABRIC REQUIRED IN THE ORIGINAL PAISLEY SHIRT PATTERN)

Size	0	1	2	3	4	5	6	7	8	9	10	11	12
Mini Skirt	5/8 yards (60cm)							1 1/8 yards (105cm)					
Knee Skirt	3/4 yards (70cm)							1 3/8 yards (125cm)					
Pockets	No extra							No extra					
Sleeve Ties	1/8 yard (15cm)							1/8 yard (15cm)					

Contents

Printing

Size Chart

Supplies

Cut list

Custom fit

Get Sewing