



Our Lady of Leisure

DIVINE SEWING PATTERNS

The Mai Tai Dress is a modern take on the wrap dress, with sharp lines and a flattering silhouette. It is designed for light to medium weight woven fabrics, such as poplin, crepe de chine or satin.

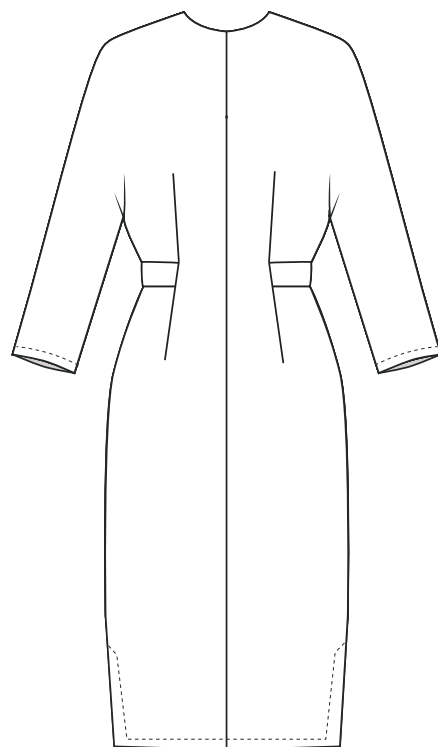
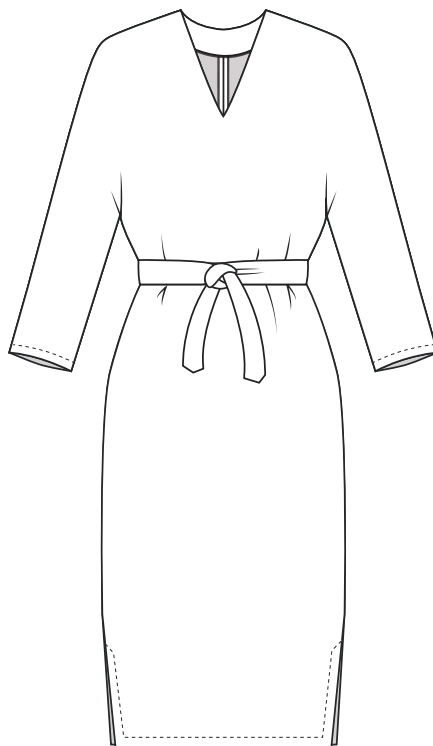
These instructions assume a 'novice' level of sewing experience. You should have a working knowledge of your sewing machine and a basic sewing vocabulary.

All seam allowances are 1 cm (3/8"). This is included in the pattern pieces.

Material Requirements:

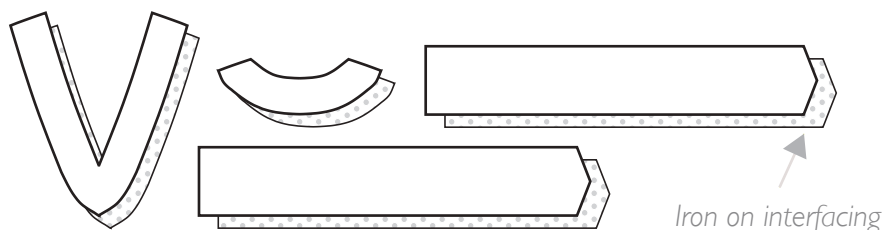
- 2.5m (2.75 yards) of fabric with a minimum width of 120cm (48").
- 25cm (0.25 Yards) of lightweight fusible interfacing.

Mai Tai Dress Instructions



These instructions show diagrams for the long-sleeved version, but the steps are the same for short sleeves.

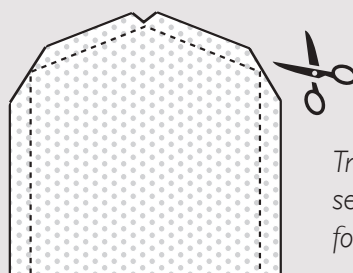
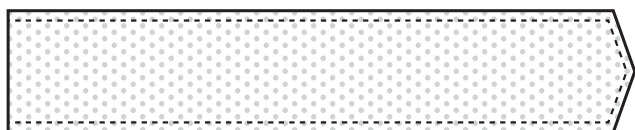
Step 1. Cut the pattern pieces from your chosen fabric, keeping the grainline straight. If you're using a printed fabric, be mindful of how the print will line up at the centre back seam. You may wish to "pattern match" these back pieces. When all the pieces are cut out, take the **Front Facing**, **Back Facing** and **Wraps**, and fuse them to a lightweight Iron-on Interfacing.



CUTTING TIP:

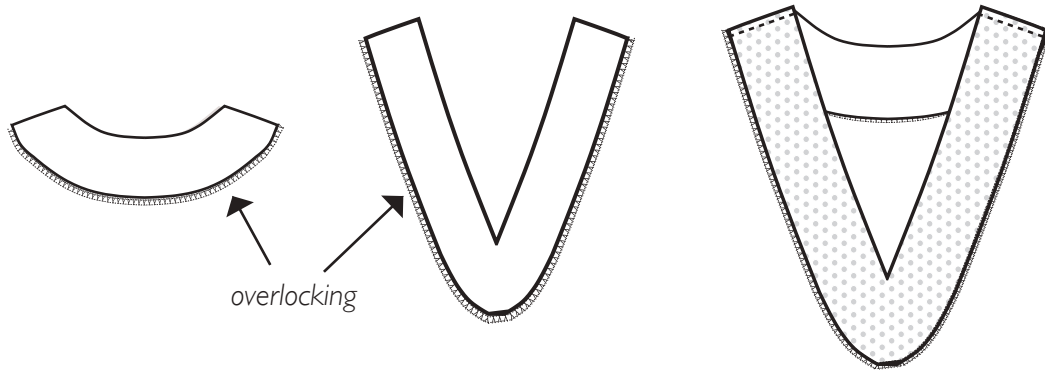
Keep the grainline parallel to the fabric's selvage. This will prevent the dress from twisting or warping when you wash it.

Step 2. With right sides together, sew the wrap pieces together with a 1 cm (3/8") seam allowance, leaving the square end open. Trim the seam allowance at the corners and then turn right side out and press.



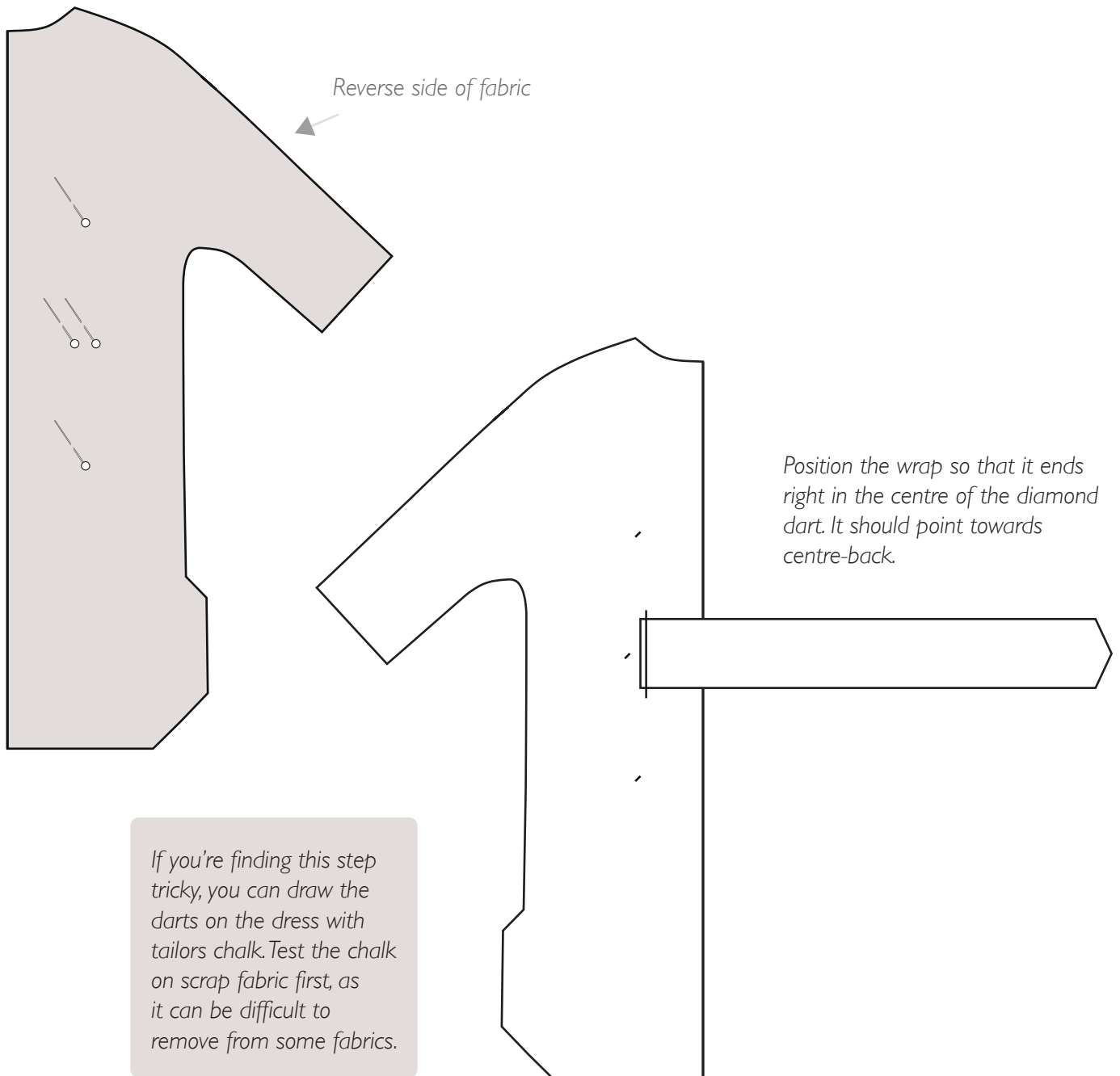
Trimming the excess seam allowances makes for sharper corners.

Step 3. If you have an overlocker (a 'serger' to American sewers), overlock the outside edges of the **Front Facing** and **Back Facing**. This is to prevent fraying. If you don't have access to an overlocker, you can use a zigzag stitch, or trim with pinking shears. Next, stitch the facings together at the shoulder seams.

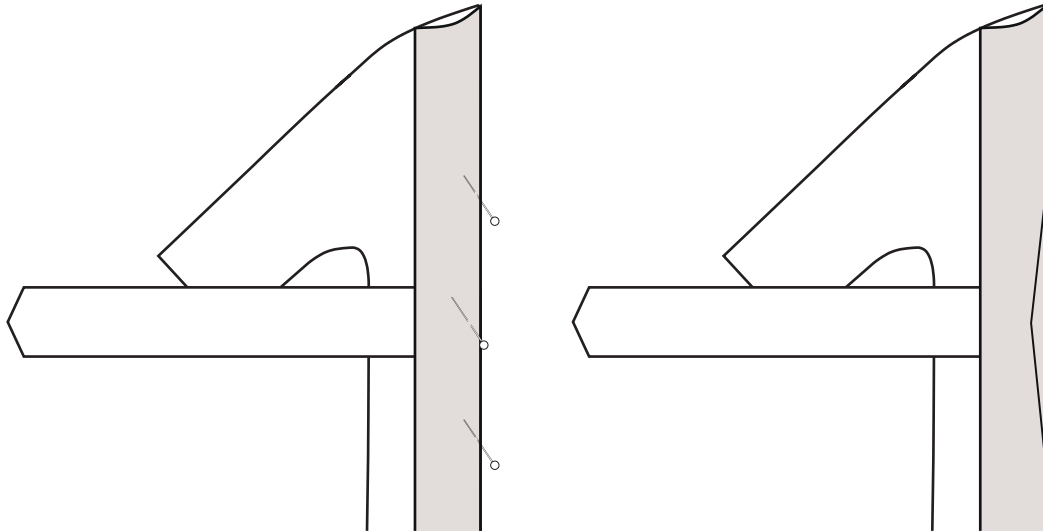


When your facing is complete, press the seams open and set it aside.

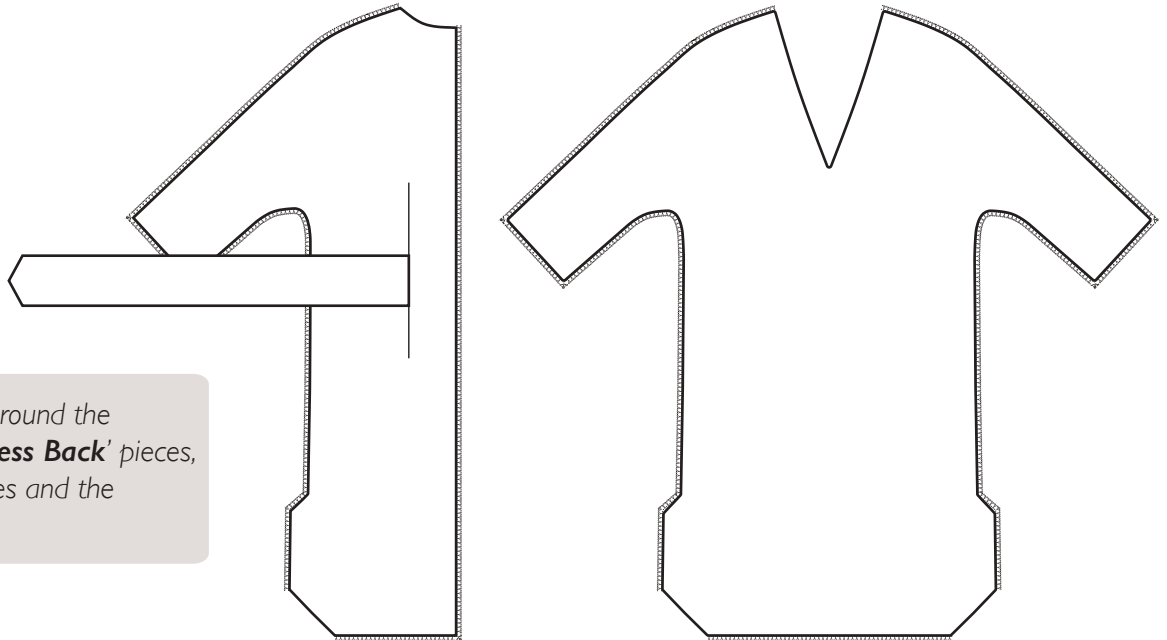
Step 4. Now we will attach the wraps to the back of the dress. Start by marking the corners of the diamond dart with pins on the reverse side of the fabric. Then flip the fabric over so you are looking at the right side. Using the pins as a guide, position the wrap inside the diamond dart, and stitch it down.



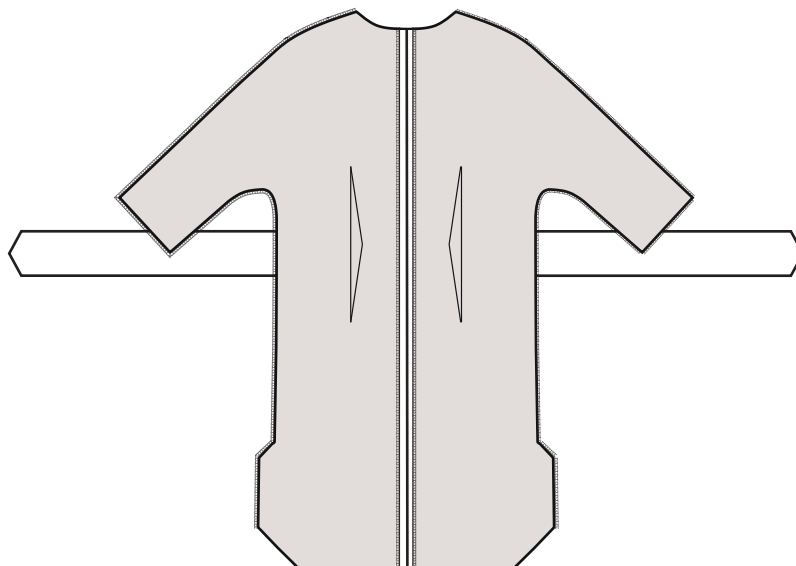
Step 5. Close the diamond dart by folding the right sides together and stitching between the pins, removing them as you go.



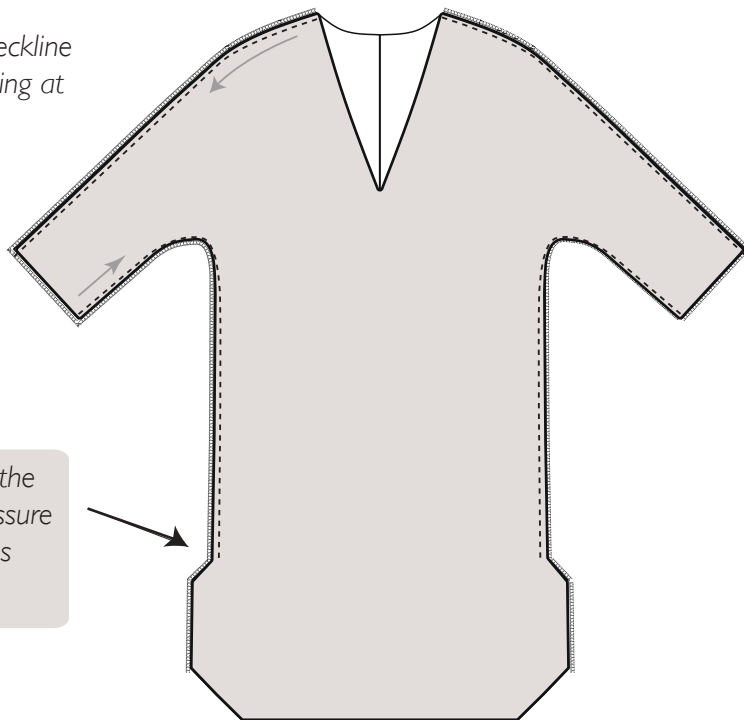
Step 6. Now we're going to do all of our overlocking (serging). Every seam in this dress is going to be pressed open, so we want to overlock the edges before we sew them. Again, if you don't have an overlocker, you can zig-zag the fabric's edges, or trim with pinking shears.



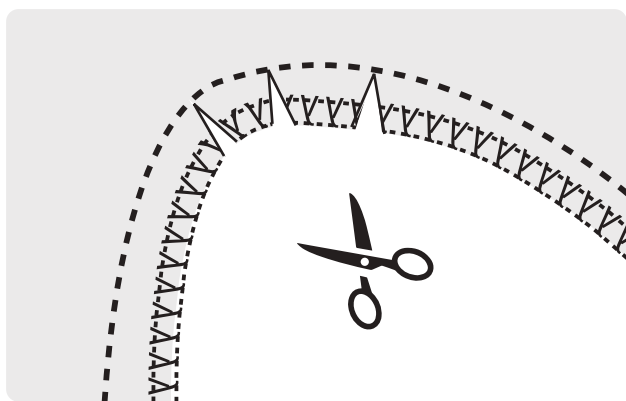
Step 7. With right sides together, join the centre-back seams and press open.



Step 8. Now we'll attach the front and back of the dress.
Start with the shoulder seams, stitching from the neckline to the sleeve hem. Next, stitch the side seams, ending at the notch at the top of the slit.
Press the seams open as best you can.



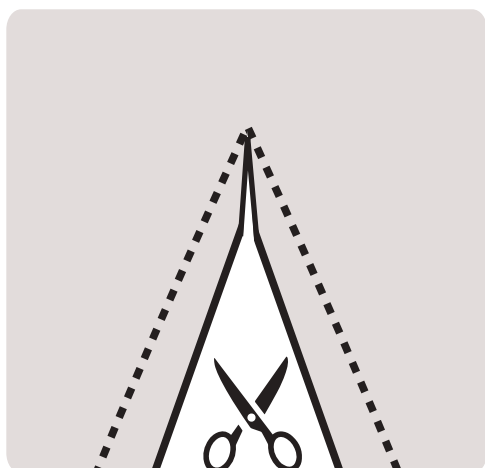
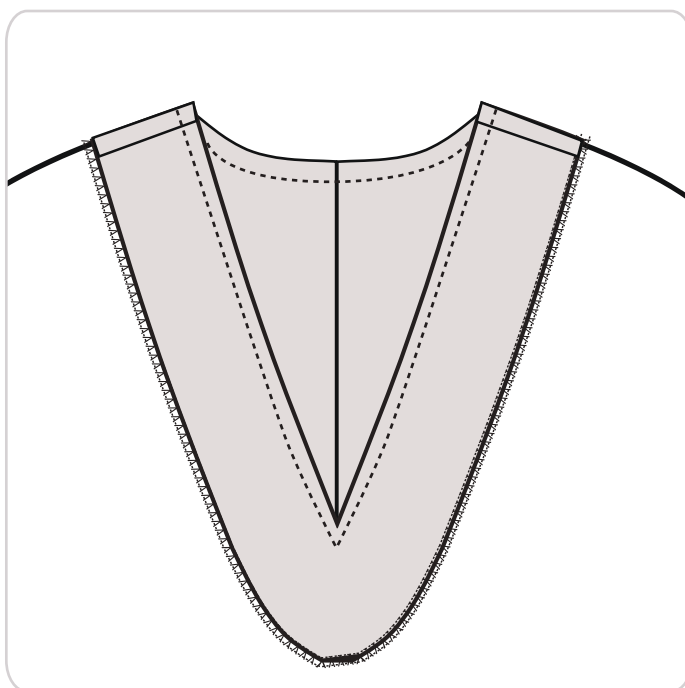
Be sure to backtack at the top of the slit, as this seam will be under pressure when you walk. A few extra stitches will make all the difference.



OPTIONAL: If you have a very stiff fabric, you may find there is some bunching in the underarm when the garment is turned right side out. A few snips into the seam allowance will release this bunching.

Step 9: Next, with right sides together, line up the facing with the neckline, and pin it in place. Stitch starting from the shoulder.

When you reach the sharp point of the V, be sure to keep the needle in while you turn the fabric. You want an unbroken line of stitches here, as you will be trimming right down to the stitching line.

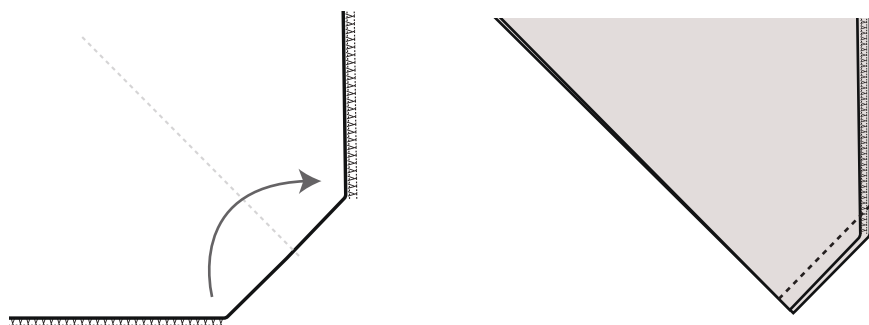


At the point of the V, snip the seam allowance as close to the stitching as you can, as this will let the fabric fall into a sharp, flat V-neck. Fold the facing inside the neckline and press.

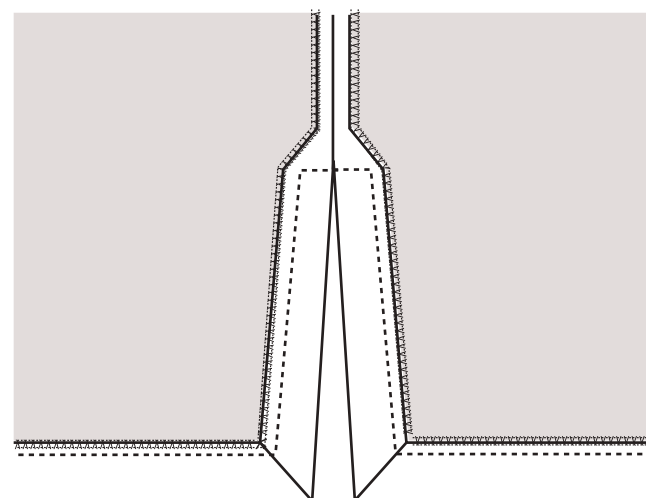
Tack the facing to the shoulder seam allowance to hold it flat, or for a tidy finish, you could top-stitch or flat-stitch along the neckline.

Step 10. Next we're going to move on to the hem.

The slits in this dress have mitred corners, so first take a corner and fold it's points together. Stitch the corner closed, and then trim down the seam allowance. Flip the corner right side out, and you should have a sharp point.



Repeat with the 3 remaining corners, and press the slits and hem flat, and secure with pins. The mitred corners will give the dress a 4cm (1.5") hem. Stitch the hem down using your machine, or if you prefer, blind stitch it by hand for an invisible hem.



Step 11. The last step is to hem the sleeve. The pattern allows for a 3cm (1") single-fold hem. Again, this can be done by machine or by hand, based on your preference.

And that's it! You're done!
Enjoy your beautiful Mai Tai Dress!

**WE'D LOVE TO SEE YOUR HANDIWORK!
FOLLOW US ON INSTA @OURLADY.SEWINGPATTERNS
AND HASHTAG YOUR PICS #LOLMAITAI**