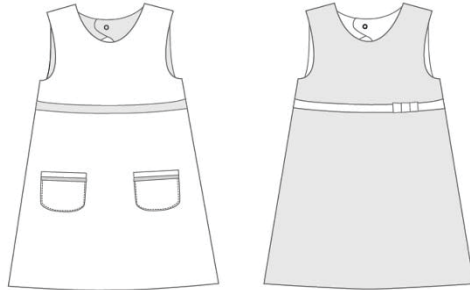


# ELENA ©



ELENA is a beautiful reversible dress, with pockets and ribbon. Sewing fun! Sew once, create two dresses! It is not only a summer dress, it can be worn in winter as well, just add a shirt and some tights. Not suitable for beginners! Sewing experience is required

Pattern does not include hem and seam allowances. Before cutting out the garment pieces, add seam and hem allowances to the original contours. Seams 1,5 cm/0.59 in  
No need to add hem allowance, the dress is fully lined.

**Recommended fabrics:** Cotton fabric or baby corduroy

Lay out the pattern pieces on a double layer of fabric (right sides facing).

### **Important for e-book:**

“Page, Sizing and Handling” should be set to “Actual size”. No scaling is required while printing. Printing orientation should be set to “Auto portrait/ Landscape”. Please check the measure square 5 to 5 cm (1.97 in. to 1.97 in.) matches your printing.

## Cm

Fabric width 140 cm

Size	Size (Body height cm)	Fabric length 01	Fabric length 02
2Y/3Y	92cm/98cm	60 cm	60 cm
4Y/5Y	104cm / 110cm	70 cm	70cm
6Y/7Y	116cm / 122cm	80 cm	80 cm
8Y/9Y	128cm / 134cm	90 cm	90 cm
10Y/11Y	140cm / 146cm	100 cm	100 cm
12Y/13Y	152cm / 158cm	115 cm	115 cm

## Inches

Fabric width 55.12 inches

Size	Size (Body height inches)	Fabric length 01	Fabric length 02
2Y/3Y	36.22 in. / 38.58 in.	23.62 in.	23.62 in.
4Y/5Y	40.94 in. / 43.31 in.	27.56 in.	27.56 in.
6Y/7Y	45.67 in. / 48.03 in.	31.5 in.	31.5 in.
8Y/9Y	50.39 in. / 52.76 in.	35.43 in.	35.43 in.
10Y/11Y	55.12 in. / 57.48 in.	39.37 in.	39.37 in.
12Y/13Y	59.84 in./ 62.2 in.	45.28 in.	45.28 in.



**Pockets:**  
Pin ribbon on front pockets  
and stitch. (Fold on half here)

