

Follow us on [Instagram](#) & [Pinterest](#)

# BARDOT WRAP DRESS

Dress - Pattern 0203  
#bardotpattern0203



Bardot is a midlength wrap dress, simple yet very feminine and modern. The dress features the distinctive spaghetti straps, front and back darts, and has an above knee length. This way kind of casual fabric, preferably a knit fabric with no stretch.

The dress was designed for a 158 cm / 5'2" tall woman, a slightly wider frame. If you are taller.

Size 34-40 / 34L / US 4-12 / UK 4-10

## MATERIALS

### FABRIC RECOMMENDATIONS

Medium weight woven fabric or knit or blend woven, knit fabric without high-stretch fibers.

### FABRIC REQUIREMENTS

For fabric / 11 inches wide fabric:

	CM	YARD
Size XS-S	177 cm	1 1/2 YD
Size M	183 cm	2
Size L	191 cm	2
Size XL-XXL	199 cm	2 1/2 YD

### OTHER ACCESSORIES

- 2 pin-brooch and slider, for the 1 on shoulder strap - plastic or metal.
- Beading thread.
- Relatively light-weight fabric, including trimming to the main fabric to reinforce the top edge and underlay.

## SEAMS

### SEAM ALLOWANCES

The sewing pattern includes 1 cm (3/8") seam allowances, 1.5 cm / 5/8" for the bodice and 2.5 cm / 1" for the skirt.

### MARKINGS

Mark the marks on the pattern and don't forget to transfer them on your fabric.

## SEAMS & STITCHES

The seams are flat-felled seams where the raw edge of material is folded back then, cut, and pressed.

Only the shoulder seam is plain seam finished with a zigzag or overlock.

## PRINTING

This pattern is coming to you both in A4 and in US letter format. Be careful to print the right version.

The cutting set up should be on steel size or 100%. Don't forget that when you do it, don't make to open corners.

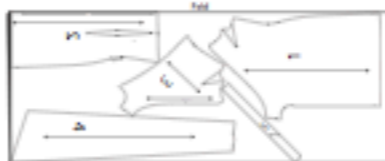
Start by printing the page containing the main pattern piece. If the measurements are correct, print all the pages of your size.

## CUTTING PLAN

NO.	NAME	QTY	MATERIAL
1	Front	1	Fabric
2	Back	1	Fabric
3	Front Facing	1	Fabric
4	Back Facing	1	Fabric
5	Shoulder Strap	2	Fabric



Place fabric on sheet, right sides together - lay the pattern pieces to the general material then cut the pieces. Be sure that the selvage is always parallel with the grainline and the 158 cm (59") don't forget to mark it on the material.



## MEASUREMENT CHART (in cm)

EU size	34	36	38	40	42	44
UK size	4	6	8	10	12	14
US size	4	6	8	10	12	14
International size	XS	S	M	L	XL	XXL
Height	158	158	158	158	158	158
Bust girth	80	84	88	92	96	100
Waist girth	62	66	70	74	78	82
Hip girth	86	90	94	98	102	106
Upper arm circumference	33	33	33	33	33	33
Lower arm circumference	22	22	22	22	22	22
Front waist length (from bust to waist)	40.5	40	40.5	40	40.5	40
Front waist length (from bust to waist) (2.5 cm / 1" below bust)	43	43	43	43	43	43
Front skirt (from bust to waist)	33	33	33	33	33	33

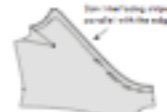
## MEASUREMENT CHART (in inches)

EU size	34	36	38	40	42	44
UK size	4	6	8	10	12	14
US size	4	6	8	10	12	14
International size	XS	S	M	L	XL	XXL
Height	59	59	59	59	59	59
Bust girth	31	33	34	36	37	39
Waist girth	24	26	27	29	30	32
Hip girth	34	35	37	39	40	42
Upper arm circumference	13	13	13	13	13	13
Lower arm circumference	8.5	8.5	8.5	8.5	8.5	8.5
Front waist length (from bust to waist)	16	16	16	16	16	16
Front waist length (from bust to waist) (2.5 cm / 1" below bust)	17	17	17	17	17	17
Front skirt (from bust to waist)	13	13	13	13	13	13

## PREPARATION

Overlocking - optional, depends on material properties. The front edge and underlay should be finished.

Apply the fusible interfacing to the wrong side of the corresponding pattern pieces before beginning to sew. The facing of left side hole needs to be reinforced.



If the raw edge of front facing is straight or optional, press it in the sewing, centered the interfacing towards the waistline.

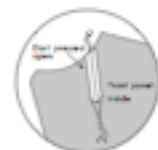
## TUTORIAL

### 1/1.1. BUST DARTS

- 1.1. Mark the darts (and points and legs) on the front pieces and facing as well.
- 1.2. Fold the fabric right sides together along the center of the raw marked dart lines. Press gently to ensure that the lines are clearly visible on top of each other.
- 1.3. Stitch the darts to begin stitching at the wide portion of the dart, which toward the waist and gently taper the stitching off the fabric of the point. Repeat it with the other side.

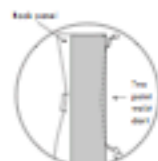


- 1.4. Do not backstitch at the point; simply leave the threads long enough to tie for security.
- 1.5. Tie the seam allowance flat.
- 1.6. Press open the seam allowance; the point fold is pressed flat.



### 2/1.1. BACK WAIST DARTS - DOUBLE POINT DARTS

- 2.1. Mark the darts (and points and legs) on the back pieces.
- 2.2. Fold the fabric right sides together along the center of the raw waist points. Press gently to ensure that the lines are clearly visible on top of each other.
- 2.3. Stitch the darts in 2 steps: begin stitching at the wide portion of the dart, which toward the waist and gently taper the stitching off the fabric of the point. Repeat it with the other side.
- 2.4. Do not backstitch at the points - simply leave the threads long enough to tie for security.
- 2.5. Press the seam allowance toward the center back and over the seam.



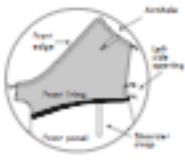
### 3/1.1. SPAGHETTI STRAPS

- 3.1. Fold in half the strap pieces with right sides together aligning the outer edges.
- 3.2. Stitch the straps into a tube (in theory, leave them with open).
- 3.3. Tie the seam allowance and turn inside out the pieces using a long sewing needle and thick thread (or a small safety pin).
- 3.4. Press the strap flat. The ready width of strap is 1 cm.

### 3.3. Stitch the seams on the front pieces.

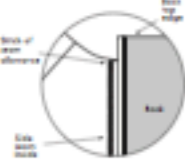
### 4/1.1. LEFT SIDE OPENING FOR TIE AND FRONT EDGE WITH UNING

- 4.1. Overlock the bottom edge of front facing darts.
- 4.2. Lay the front facing on the front panel with right sides together, align the edges and pin the pieces. The particularly finished spaghetti strap is in between the two layers.
- 4.3. Stitch continuously the front edge between the center front and waist - finish the entire of the left side opening on the left side.
- 4.4. Now the seam allowance and turn inside out the darts.
- 4.5. Press the seams and edges.



### 5/1.1. ASSEMBLING THE SIDES

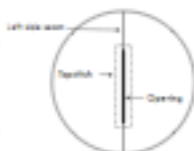
- 5.1. Overlock the sides of front and back pieces.
- 5.2. Lay the front and back pieces on each other with right sides together, align the sides and pin the pieces.
- 5.3. Stitch the seams around the side of left side. (The sewing is 2 times on left side because of side opening.)
- 5.4. Stitch the front seam allowance to the front or center with few stitches parallel with side seam.
- 5.5. Press the seams correct.



### 6/1.1. LEFT SIDE OPENING FOR THE WAIST TIE

- 6.1. Fold and press the waist allowance in.

- 6.2. Pin the folded edge and turn inside out the darts.
- 6.3. Topstitch around 0.7 cm the side hole.

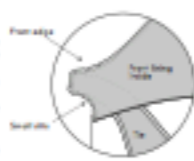


### 7/1.1. WAIST TIE

- 7.1. Fold and press inside 0.7 cm then 0.5 cm on the 3 outer edges of the tie pieces.
- 7.2. Stitch the edges of the tie.
- 7.3. Fold the piece according to the notches and stitch again. The darts of pieces is 3 cm (ready width).
- 7.4. Press the darts on the front piece with right sides together, align the notches and pin the pieces.
- 7.5. Sew the ties on the edge of front pieces.

### 8/1.1. FINISHING OF THE FRONT UNING

- 8.1. Turn the dress lying on the front side with right sides together. The waist tie is placed in between the two layers.
- 8.2. Stitch the remaining two sides of the lining on the front panel around the waist tie.
- 8.3. Trim the seam allowance, cut some darts into the seam allowance of curved lines.
- 8.4. Repeat these steps with the other side.
- 8.5. Turn inside out the dress and press the seams.

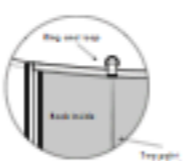


### 9/1.1. BACK TOP EDGE WITH STRAP SHOOTS AND TOPSTITCHING

- 9.1. Fold and press inside 0.7 cm then 0.5 cm on

### the top edge of back panel.

- 9.2. Cut 3.3 cm from the shoulder strap for the back to attach the strap.
- 9.3. Thread the piece of strap through the first ring of adjustment shoulder straps.
- 9.4. Fold the 3.3 cm strap to half and stitch the long with ring on the fabric and pressed edge with narrow cast back zigzag stitches aligned to the line of seam darts.
- 9.5. Pin the back top folded edge and other inside corners the fold.
- 9.6. Stitch the shoulder strap pieces again to the back of the top edge with seam allowance to the top edge.
- 9.7. Turn inside out the dress and topstitch the front edge around on the right side with the same stitch width like the back edge which the regular seam on the bottom of lining on front and ends at the side seam connected to the back top edge with.



### 10/1.1. ATTACHING SHOULDER STRAPS WITH BEA RING AND SLIDER

- 10.1. Thread the shoulder straps over the center bar of the slider on the right side of the dress. Make sure to facing correct.
- 10.2. Thread the end of the strap through the first ring.
- 10.3. Turn the strap over and press the raw edge of the strap above the center bar of the slider. Be sure to back toward the facing and insert the raw edge under (or the center bar of the slider) and roll over through to the other side. If your raw edge is combination between two layers of the strap you did it right!
- 10.4. The strap should not be turned over with the wrong side (the part that face your body) facing up. Stitch the strap end to the wrong

### side of the dress with seam and then zigzag stitches.

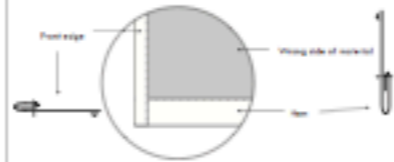
Do not stitch through the last layer of the dress.

10.5. Repeat the steps above to create a second strap.



### 11/1.1. HEMMING

- 11.1. Fold and press inside 1 cm then 0.5 cm on the bottom of skirt part.
- 11.2. Turn and press inside 0.7 cm then 0.5 cm on outer from edges of skirt part.
- 11.3. Stitch the hem on the bottom ring, then on the center front edge. Do them easily with 1.2 cm on the bottom and 0.5 cm on the front edge.
- 11.4. Press the seams.



THE END