

!WHOOOP

PATTERN
No 71





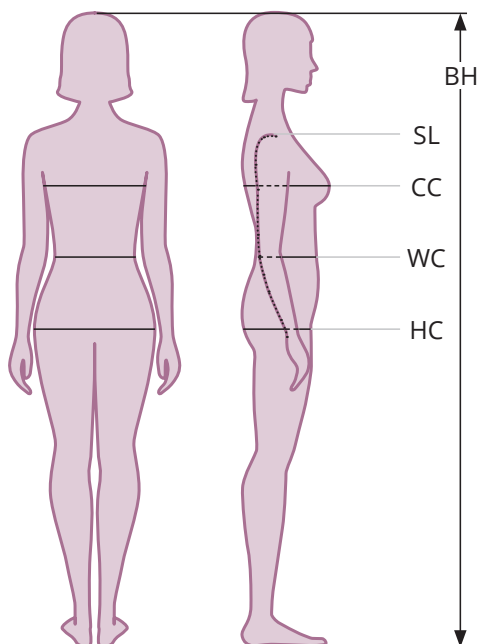
PATTERN
No 71
134 - 176



PATTERN
No 71
86 - 128



ALSO
AVAILABLE



confection size	textile requirement
32	80 cm
34	80 cm
36	80 cm
38	80 cm
40	80 cm
42	80 cm
44	80 cm
46	80 cm

Recommended fabrics

Please use stretchy fabrics (knitwear) to sew this pattern.

confection size	32	34	36	38	40	42	44	46
BH body height	168 cm	168 cm	168 cm	168 cm	168 cm	168 cm	168 cm	168 cm
CC chest	80 cm	84 cm	88 cm	92 cm	96 cm	100 cm	104 cm	110 cm
WC waist	65 cm	68 cm	72 cm	76 cm	80 cm	84 cm	88 cm	95 cm
HC hip	90 cm	94 cm	97 cm	100 cm	103 cm	106 cm	109 cm	114 cm
SL sleeve length	59,3 cm	59,6 cm	59,9 cm	60,2 cm	60,5 cm	60,8 cm	61,1 cm	61,4 cm

Legal Notice

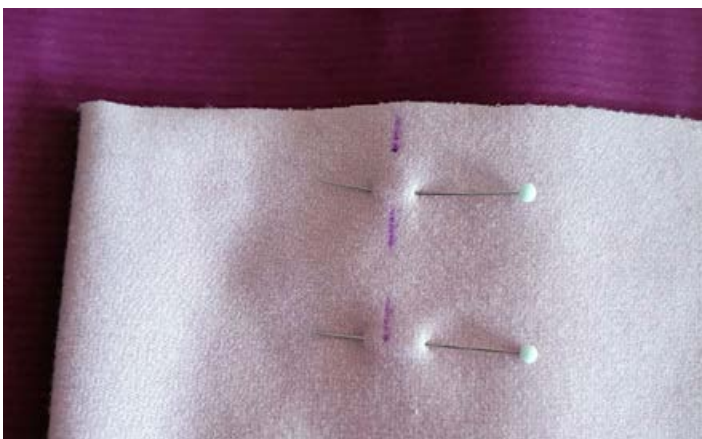
Runenstein-Schnittmuster, owner Nina Ströher
 Gerther Straße 37, 44627 Herne, +49 178 2695995, Email: whoop@runenstein.com
 Responsible for content according to § 10 paragraph 3 MDStV:
 Runenstein-Schnittmuster, owner Nina Ströher, Copyright © 2020

Seam allowances

!Whoop patterns do not contain seam allowances. Please add the seam allowance you are used to. We recommend 1.5 cm and 3 cm at the hems for a first cut. If you have already sewn the cut and the size fits, a seam allowance of 0.7 cm is sufficient. This corresponds to the width of the presser foot of your sewing machine and 1.5 cm at the hems.

Prewash fabrics

Many fabrics run in when washed for the first time. We, therefore, recommend pre-washing the fabrics.



Recommended fabrics

Please use stretchy fabrics (knitwear) to sew this pattern.

Legal issues

!Whoop patterns are not allowed to be copied or reproduced in any other way. In small editions, models sewn according to !Whoop patterns may be sold. For larger editions and all other commercial uses, the consent of the management is required.

!Whoop assumes no liability for any errors in the pattern.

Prepare pleat

In the pattern a pleat is provided at the front and back. You can easily omit one of them by simply folding the pattern at the line for the pleat and thereby moving the fabric break.

Take the front part 2 and fold it right to right.

Apply the mark for the pleat from the pattern to your fabric. Draw a line about 3 cm long.

Pin this area well.



Now make a small seam (approx. 3 cm) exactly where the mark is in the pattern. Make sure that you fasten the end of the seam well so that it does not tear later.



Lay the fabric of the pleat flat apart and spread it evenly on both sides. The left side of the fabric is on top.



Pin the pleat and sew over the pleat once in the area of the seam allowance. This seam should not be seen later, it only makes it easier for you to continue sewing. So make sure that you do not sew too deep.



This is what your pleat looks like from the right now.

Repeat these steps for the back section.



Sewing the front parts together

Place the lower edge of the front part 1 flush with the upper edge of the front part 2 (right to right). Pin and sew both parts together. This way you get your front part.

Sew the back part in the same way.



Close shoulder seams

Place the front part right to right on the back part so that the shoulder seams are flush with each other. Pin and sew the shoulder seams.



Close side seams and hem armholes

Place the front part right to right on the back part. Close the side seams up to the dividing seam. It is important that you work here with the sewing machine and not with the overlock, because you need the seam allowances immediately to create the hems out of them.



Iron the seam apart and the seam allowances of the armholes also to the left side. Pin here.