

Runenstein

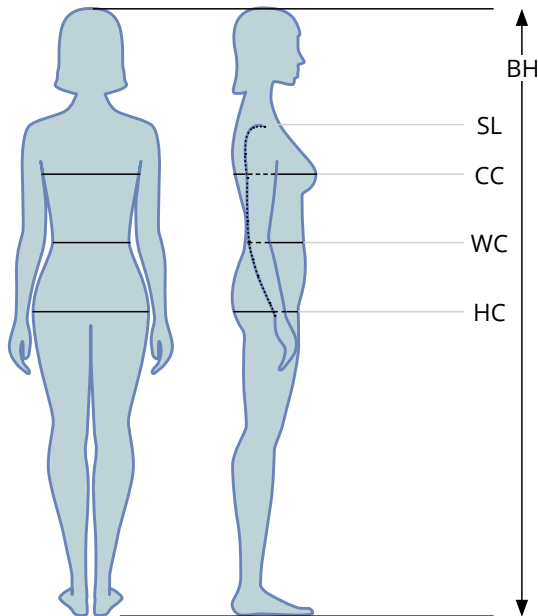
Patterns

Glenna is an all-rounder. This starts with the choice of fabric because you can sew Glenna from almost any material. Whether imitation leather, coarse knitwear, jeans or sweat, enjoy yourself! Your Glenna will always look amazingly different. Depending on the outside temperature, you simply adjust your choice of fabric and lining so you can sew Glennas for spring, autumn or even winter.

Using very fine material you even have a companion for mild summer evenings. Wear Glenna with your dress or trousers, sporty or elegant - Glenna always looks good! A detailed, illustrated instruction will help you with the design. If you need further help, you can find these instructions on our site on facebook.

We want to see you happy!

Nina and Thomas from Runenstein



Size	outer fabric	lining	zipper
32	103 cm	103 cm	49 cm
34	104 cm	104 cm	50 cm
36	105 cm	105 cm	51 cm
38	106 cm	106 cm	52 cm
40	107 cm	107 cm	53 cm
42	108 cm	108 cm	54 cm
44	109 cm	109 cm	55 cm
46	110 cm	110 cm	56 cm

You also need:

100 cm cuff material, 2 zippers à 10 cm for the pockets (optional).

Recommended material

Almost all fabrics such as jeans, suede, oilskin, leatherette, sweatshirt and many more are suitable for the outer fabric.

This is how you determine the size of a garment

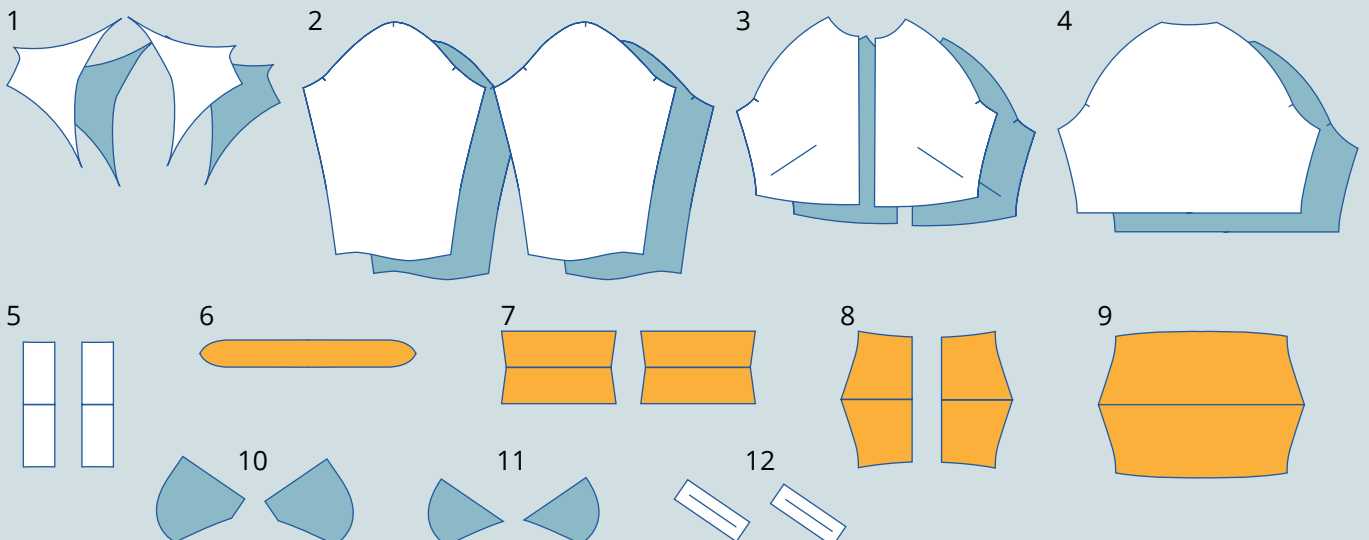
confection size	32	34	36	38	40	42	44	46
BH body height	168 cm	168 cm	168 cm	168 cm	168 cm	168 cm	168 cm	168 cm
CC chest circumference	80 cm	84 cm	88 cm	92 cm	96 cm	100 cm	104 cm	110 cm
WC waist circumference	65 cm	68 cm	72 cm	76 cm	80 cm	84 cm	88 cm	95 cm
HC hip circumference	90 cm	94 cm	97 cm	100 cm	103 cm	106 cm	109 cm	114 cm
SL sleeve length	59 cm	59,5 cm	60 cm	60,5 cm	60,5 cm	61 cm	61 cm	61,5 cm

Check your arm length and adjust the sleeve length
See dividing line in the cut sheet.

List of cutting parts

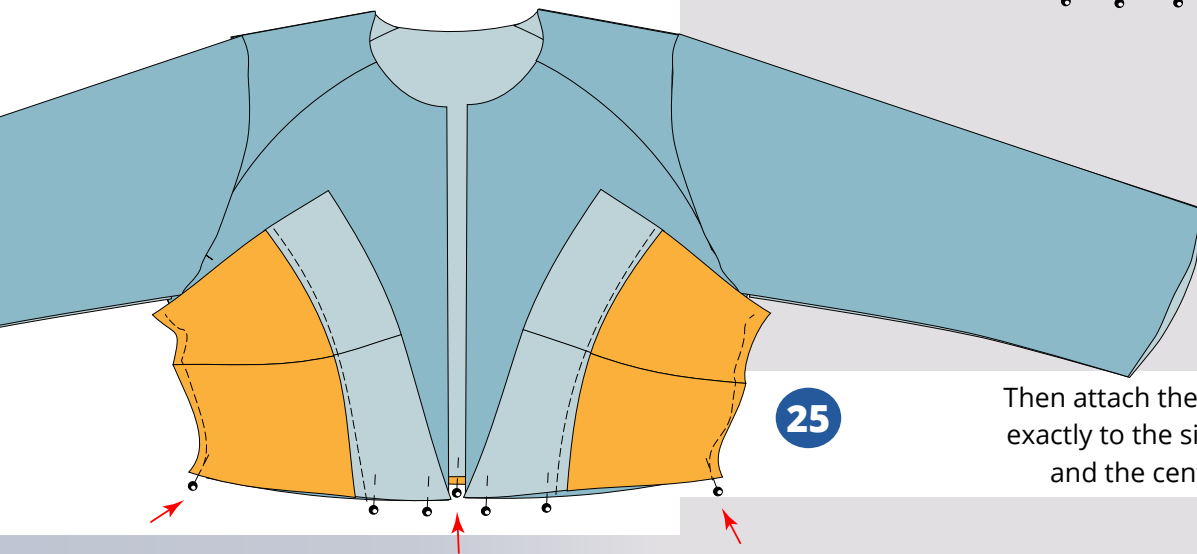
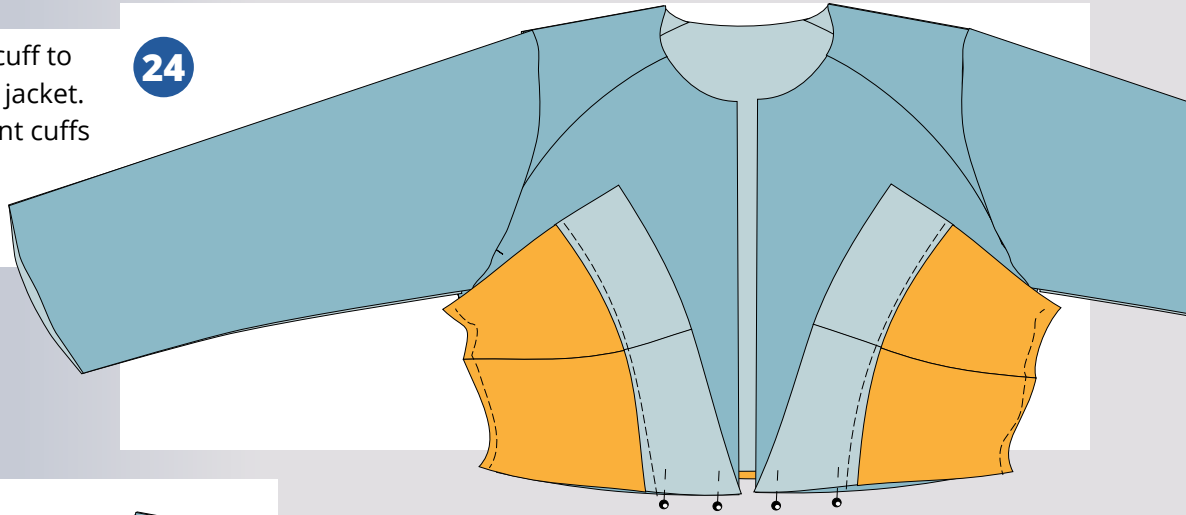
After you have completed cutting, you will have the following sewing pieces in front of you: outer fabric (white), lining (blue) cuff material (orange)

1. Shoulder yoke
2. Ärmel
3. Front part
4. Rear part
5. Cuff trims
6. Cuff collar
7. Sleeve cuffs
8. Front waist cuffs
9. Rear waist cuffs
10. Top pocket bag
11. Bottom pocket bag
12. pocket trim



Now attach your waist cuff to the outer fabric of your jacket. First, attach the two front cuffs to the centre front of the jacket.

24

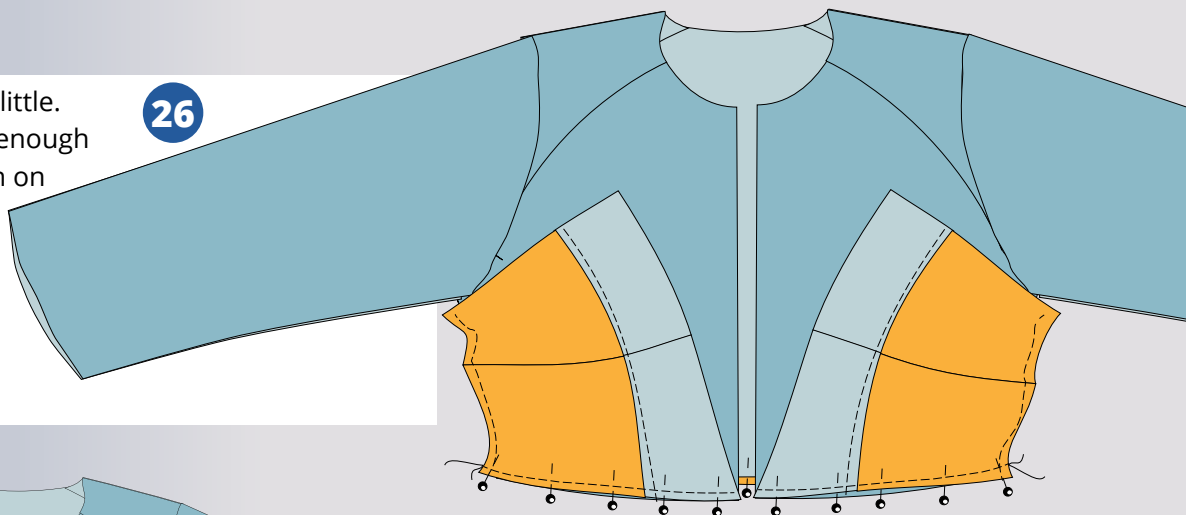


25

Then attach the side seams of the cuff exactly to the side seams of the jacket and the centre back with a needle.

Now you have to pull a little. Stretch the fabrics just enough so that they are smooth on top of each other and insert more needles. Then sew the cuff to the jacket. Even here you have to stretch a little.

26



27

If you fold back your cuff, you have this result.